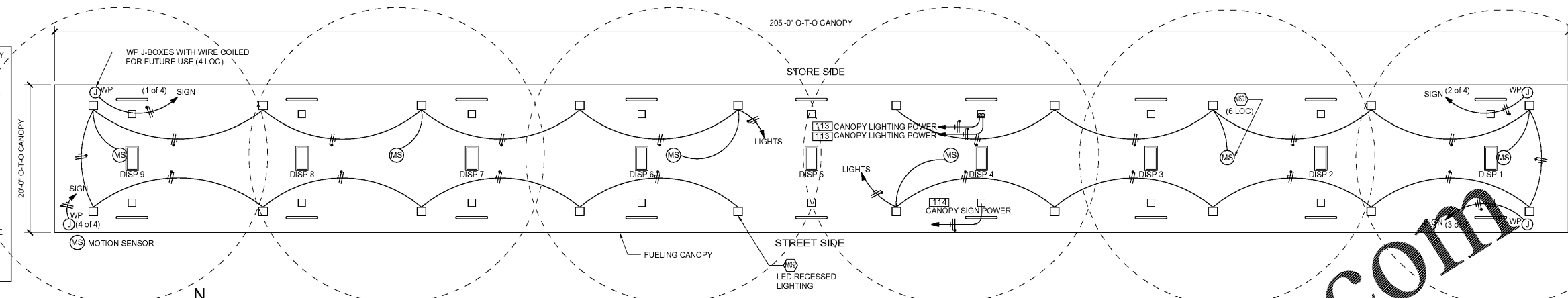


STP POWER CONDUITS MUST BE RUN IN SEPARATE RACEWAY. ENTIRE WIRING RUN MUST BE IN RIGID PVC COATED GALVANIZED STEEL CONDUIT. USE ONLY ROB ROY CONDUIT TYPES "PERMA-COAT", "PLASTI-BOND" OR "KORKAP" ELECTRICAL CONDUITS. NO PVC OR RNC CONDUIT ALLOWED.

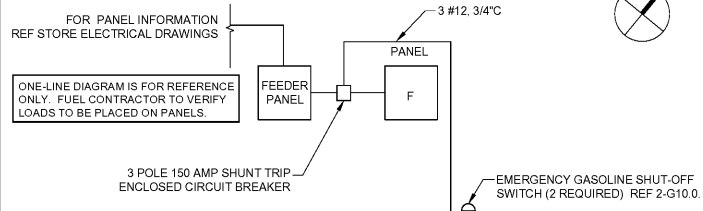
USE ONLY ROB ROY CONDUIT TYPES "PERMA-COAT", "PLASTI-BOND" OR "KORKAP" ELECTRICAL CONDUITS AT FIBERGLASS TANK SUMPS OR WHERE BRAVO F-17-RR OR F-10-RR ENTRY FITTINGS ARE CALLED OUT FOR FIRST 10' OF RUN. TRANSITION TO RIGID NONMETALLIC CONDUIT (RNC) WHERE ALLOWED BY JURISDICTION.

RUN PVC COATED GALVANIZED STEEL FOR WIRING RUNS EXPOSED TO THE WEATHER. FOR ENCLOSING MAIN GROUNDING CONDUCTOR: WHERE REQUIRED FOR MECHANICAL PROTECTION OR WHERE SPECIFICALLY INDICATED.

WITH THE EXCEPTION OF THE FIRST AND THE LAST 10' OF THE UNDERGROUND RUN AND ONLY WHERE AHJ ALLOWS, RIGID NONMETALLIC CONDUIT (RNC) IS ALLOWED FOR UNDERGROUND RUNS IF CONDUIT IS BURIED AT A MINIMUM OF 2'.



2 CANOPY CONDUIT SCHEMATIC
1/8"=1'-0"



3 PARTIAL ELECTRICAL ONE-LINE DIAGRAM
1/8"=1'-0"

LIGHTING SUPPLIED BY 7-ELEVEN, INC AND INSTALLED BY FUEL CONTRACTOR.

CIRCUITS REQUIRED FOR THE FUELING AREA / CANOPY LIGHTING AND MISCELLANEOUS EQUIPMENT ARE:

CANOPY LIGHTS	1100 VA	20 A BREAKER
CANOPY LIGHTS	1100 VA	20 A BREAKER
CANOPY SIGNS	300 VA	20 A BREAKER
AIR-VAC MACHINE	1560 VA	20 A BREAKER
CONT/EMERG SHUTOFF	40 VA	20 A BREAKER

REF STORE MEP PANEL SCHEDULES FOR LOCATION

NAME	DESCRIPTION	CONDUIT SIZE	QTY	WIRE SIZE / MFR #	WIRE QTY
101	DISPENSER POWER - NON DIESEL	3/4"	7	#12 THWN-2	1#12 HOT, 1#12 NEUT, 1#12 GR
102	DISPENSER SUMP SENSOR	3/4"	9	BELDEN #88760	1
103	DISPENSER DATA *	3/4"	9	2-WIRE TWISTED PAIR CAT6 (FOR FUTURE EMV)	4 PAIR
104	2HP STP POWER	3/4"	2	#12 THWN-2	3#12 HOTS, 1#12 GR
105	RUL TANK ATG/SUMP, INTERSTITIAL, FILL SENSORS	3/4"	1	BELDEN #88760	4 #88760
106	PUL/DSL TANK ATG/SUMP, INTERSTITIAL, FILL SENSORS	3/4"	1	BELDEN #88760	7 #88760
107	FILL BUCKET SENSORS	3/4"	3	BELDEN #88760	1
108	STP SUMP SENSOR/ATG PROBE	3/4"	3	BELDEN #88760	2
109	INTERCOM	1"	2	BELDEN 8762	2 PAIR PER CALL BOX
110	DISPENSER POWER - DIESEL	3/4"	2	#12 THWN-2	1#12 HOT, 1#12 NEUT, 1#12 GR
111	1.5HP STP POWER	3/4"	1	#12 THWN-2	2#12 HOTS, 1#12 GR
112	AIR VAC MACHINE	3/4"	1	#12 THWN-2	1#12 HOT, 1#12 NEUT, 1#12 GR
113	CANOPY LIGHTING POWER	3/4"	2	SEE BLDG ELECTRICAL	SEE BLDG ELECTRICAL
114	CANOPY SIGN POWER	3/4"	1	SEE BLDG ELECTRICAL	SEE BLDG ELECTRICAL

CK	LOAD SERVED	WIRE	BRKR	PL	PHASE	PHASE A	PHASE B	PHASE C	BRKR	WIRE	LOAD SERVED	CK	
1	DISPENSER #1	12	20	1	1.08	0.00	0.00	0.00	1	20	12	DISPENSER #2	2
3	SWITCHED NEUTRAL	---	---	---	---	0.00	---	---	---	---	SWITCHED NEUTRAL	4	
5	DISPENSER #3	12	20	1	1.08	0.00	0.00	0.00	1	20	12	DISPENSER #4	6
7	SWITCHED NEUTRAL	---	---	---	---	0.00	---	---	---	---	SWITCHED NEUTRAL	8	
9	DISPENSER #5	12	20	1	1.08	1.08	0.00	0.00	1	20	12	DISPENSER #6	10
11	SWITCHED NEUTRAL	---	---	---	---	0.00	0.00	---	---	---	SWITCHED NEUTRAL	12	
13	DISPENSER #7	12	20	1	1.08	1.08	0.00	0.00	1	20	12	DISPENSER #8	14
15	SWITCHED NEUTRAL	---	---	---	---	0.00	0.00	---	---	---	SWITCHED NEUTRAL	16	
17	DISPENSER #9	12	20	1	1.08	0.00	0.00	0.00	---	---	SPACE	18	
19	SWITCHED NEUTRAL	---	---	---	---	0.00	0.00	---	---	---	SPACE	20	
23	PUL SIP	12	20	2	1.21	1.21	0.00	0.00	2	20	12	PUL SIP	22
25	BOX / V DISC	12	20	1	0.47	1.09	1.21	1.21	2	20	12	DSL SIP	26
27	LV DISC	12	20	1	0.36	1.09	0.36	1.09	---	---	---	---	28
29	SPACE	---	---	---	---	0.00	0.00	---	---	---	SPACE	30	
TOTAL				13.70		3.87		KVA					
				114.17		32.25		AMPS					
TOTAL LOAD				17.57		84.47		AMPS					
FEEDER LOAD				17.57		84.47		AMPS					

* REFERENCE GILBARCO FIELD WIRING DIAGRAM FE-363R FOR COMPLETE SPECIFICATIONS
* CONTRACTOR TO UPSIZE CONDUCTORS FOR VOLTAGE DROPS AS REQUIRED

FUEL GAS TO PROVIDE SINGLE PHASE POWER TO THE MAINS FOR THE PHASE POWER TO RUN FROM MAGNETIC MOTOR VARIABLE SPEED STPS.

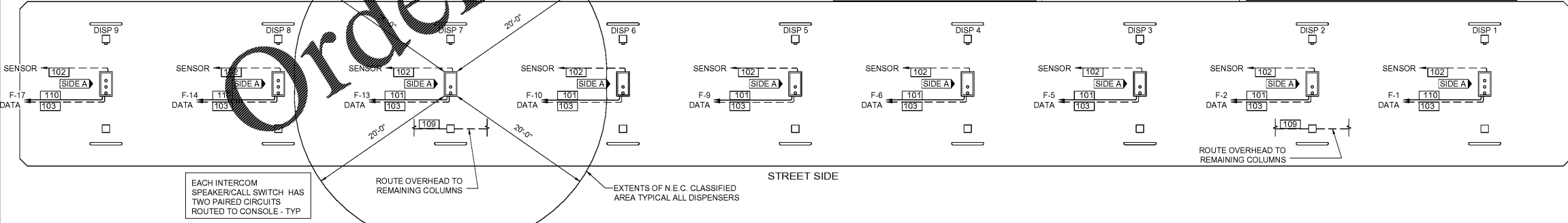
COORDINATE PANEL F AND FUELING AREA CIRCUIT LOAD INFORMATION WITH STORE MEPS. STORE CONTRACTOR TO SUPPLY AND INSTALL NEW PANELS AND VERIFY ELECTRIC PANEL CAN MEET LOAD REQUIREMENTS.

STORE CONTRACTOR: INSTALL CONDUIT FROM THE ELECTRICAL ROOM GUTTERS TO 10'-0" PAST BUILDING SLAB. SEE SPECIFICATION SHEET G16.0, SECTION VII, 2.3.1 FOR CONDUIT TYPES.

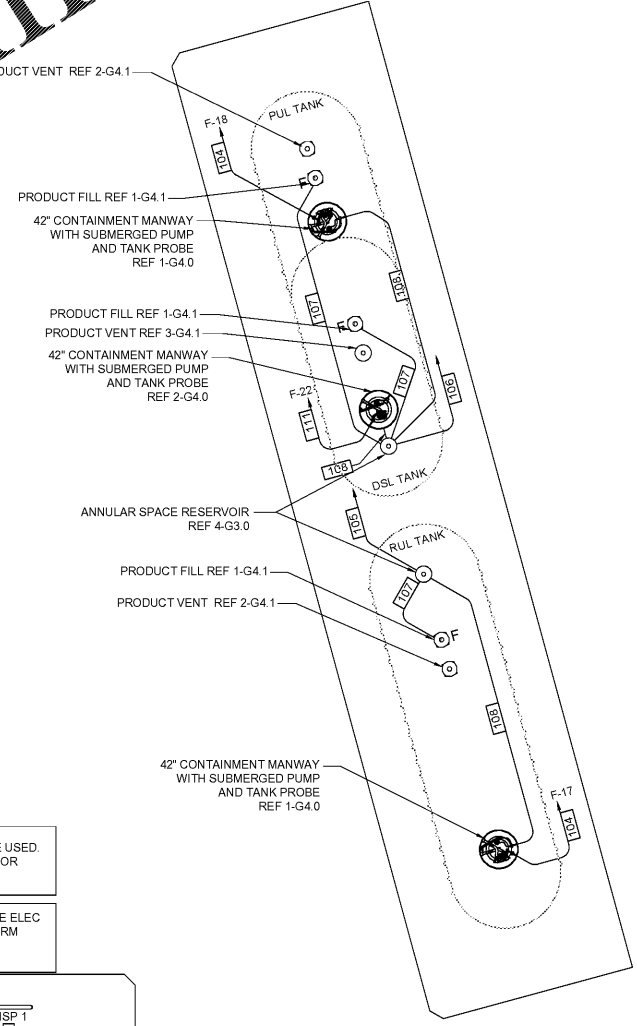
FUELING CONTRACTOR: EXTEND CONDUITS FROM 10'-0" PAST BUILDING SLAB TO FINAL TERMINATION POINT. SEE SPECIFICATION SHEET G16.0, SECTION VII, 2.3.1 FOR CONDUIT TYPES.

NOTE: PVC CONDUIT (WHERE ALLOWED BY AHJ), MAY BE USED SEE SPECIFICATION SHEET G16.0, SECTION VII, 2.3.1 FOR LOCATIONS WHERE PVC CONDUIT MAY BE USED.

NOTE: ROUTE ALL CONDUITS UNDERGROUND TO C-STORE ELEC ROOM. DATA/COM CABLE EXCESS TO BE COILED IN ELEC RM FOR ROUTING ABOVE CEILING IN C-STORE TO FINAL TERMINATION POINT.



1 UNDERGROUND CONDUIT SCHEMATIC
1/8"=1'-0"



PRINTED BY: R. KENTZ
DRAWING NAME: 30177 - G9.0 LIST ELECTRICAL PLAN, ONE-LINE DIAGRAM AND PANEL SCHEDULES
PRINT DATE: Jun 04, 2019 - 5:42pm

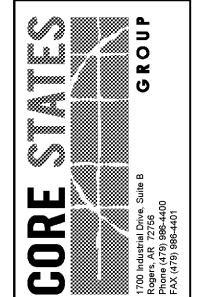
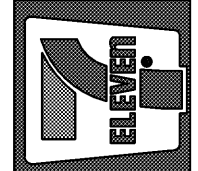
Rev. #	Date	Description

Proto 11-05-18

7-ELEVEN, INC.
3200 HACKBERRY ROAD, IRVING TEXAS 75063

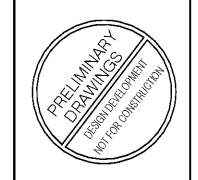
7-ELEVEN #38777
US 301 & FORT HAMER ROAD
PARRISH, FL 34219

UST ELECTRICAL PLAN, ONE-LINE DIAGRAM AND PANEL SCHEDULE



Job#: SEI-26848
Scale: AS NOTED
Date: 05/06/19
Drawn By: RMK
Checked By: KMS

Documents prepared by Core States Group are to be used only for the specific project and are not to be used for any other project. Any extension of use without the written consent of Core States Group is done at the user's own risk. If used in a project not intended by Core States Group, Core States Group shall not be held liable for claims and losses.



SHEET:
G9.0
FUELING - USA