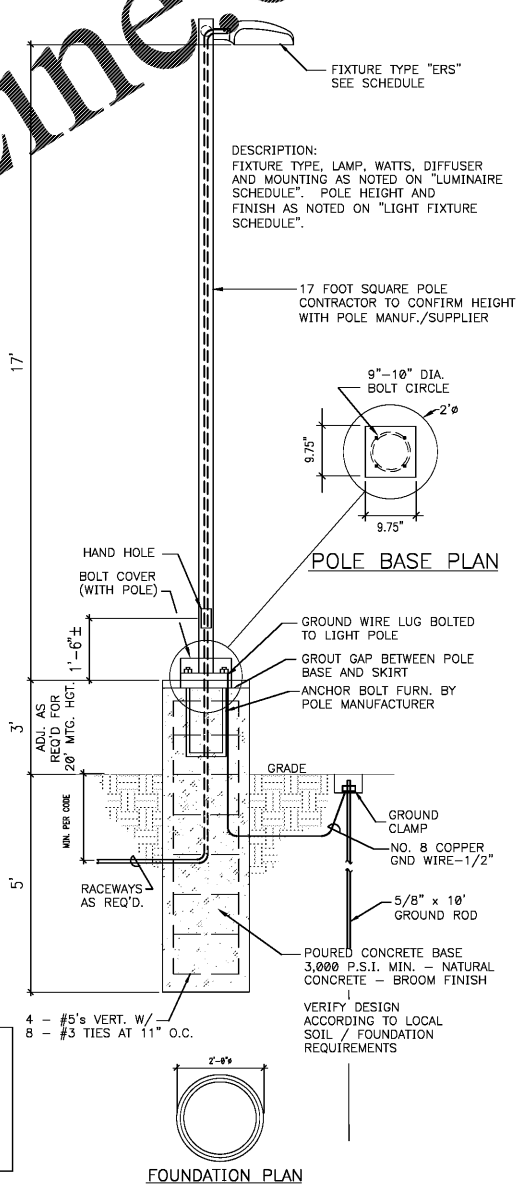
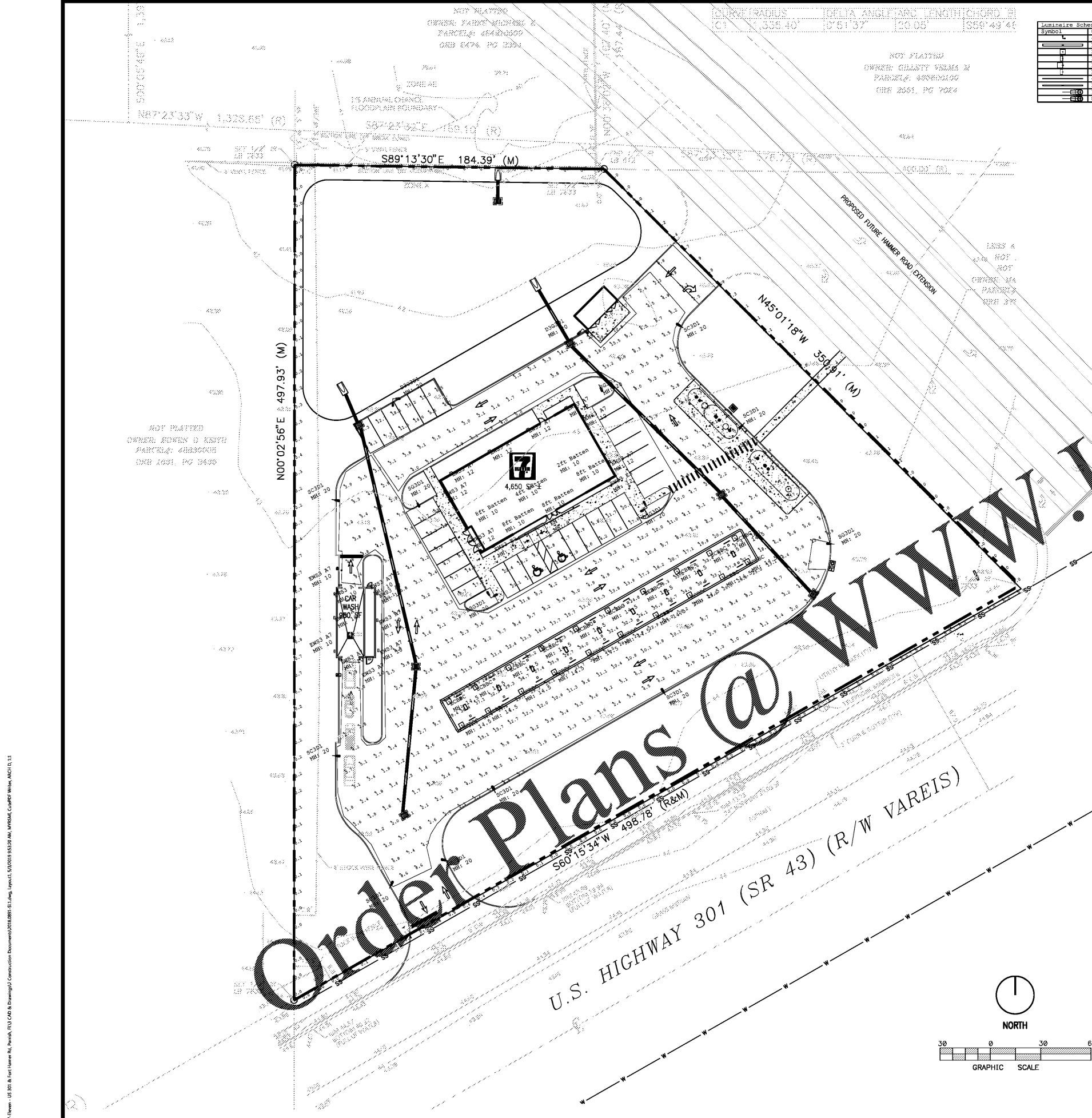


STUART ANDERSON, P.E.
FL. REG. #60848

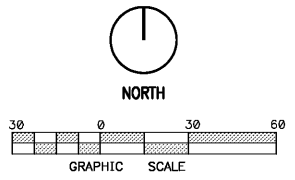
This item has been electronically signed and sealed by Stuart Anderson on 5/20/19 using a digital signature. Printed copies of this document are not considered signed and sealed and the signature must be verified on any electronic copies.

Symbol	Qty	Label	Arrangement	HPF	Description	Avg. Watts	Avg. Lum. Lumens
SC3D1	1	Zfc Batten	SINGLE	1.000	ZFC 24 4100K Batten Strip GBW102441BA7-SY	8.34	768
SC3D1	20	SC3D1	SINGLE	1.000	SC3D1 48 4100K Batten Strip GBW104841BA7-SY	110	13550
ERS3 A7	18	ERS3 A7	SINGLE	1.000	ERS3 A7D150 120-27V	25	2500
ERS3 B3	2	ERS3 B3	SINGLE	1.000	ERS3 B3D150	90	8600
ERS2 0-03-D1-1-50-1	4	ERS2 0-03-D1-1-50-1	SINGLE	1.000	ERS2 0-03-D1-1-50-1 Color	16.68	1536
ERS2 0-03-D1-7-50-1	8	ERS2 0-03-D1-7-50-1	SINGLE	1.000	ERS2 0-03-D1-7-50-1 Color	257	19950
SC3D1	8	SC3D1	SINGLE	1.000	SC3D1 24 4100K Batten Strip GBW102441BA7-SY	8.34	768

Label	CalcType	Units	Avg	Max	Min	Avg/Min	Max/Min
Air Pump	Illuminance	FC	10.15	10.1	10.0	1.00	1.00
Entrance 1	Illuminance	FC	7.23	7.7	6.6	1.10	1.17
Entrance 2	Illuminance	FC	2.08	2.1	1.8	1.15	1.22
Gas Canopy	Illuminance	FC	31.95	37.8	24.8	1.29	1.52
General Approach	Illuminance	FC	6.93	32.5	1.0	6.93	32.50
Parking 1	Illuminance	FC	10.22	24.4	2.9	3.52	8.41
Parking 2	Illuminance	FC	10.65	12.2	4.7	2.27	2.60
Parking 3	Illuminance	FC	10.73	29.1	4.0	2.68	7.28
Parking 4	Illuminance	FC	10.46	18.1	4.2	2.49	4.31
Property Line	Illuminance	FC	9.14	9.9	8.2	1.09	1.21



BID SET
7-1-2019



NOTES:
ALL CONCRETE POLE BASES TO BE INSTALLED OF 24" - 36" BEHIND BACK OF CONCRETE CURB.
POLE SHALL BE CAPABLE OF WITHSTANDING 150 MPH WIND SPEED.

1 SITE LIGHTING POLE AND BASE NTS

SITE LIGHTING PLAN

NO DATE REMARKS
REVISIONS



**7-ELEVEN
STORE #38777**

US 301 & FORT HAMER RD.
PARRISH, FL
34219

PROJECT NO: 2018.0891
DATE: 3-29-19

SL1
SITE LIGHTING PLAN

CHECKED: CDB DRAWN: MRS