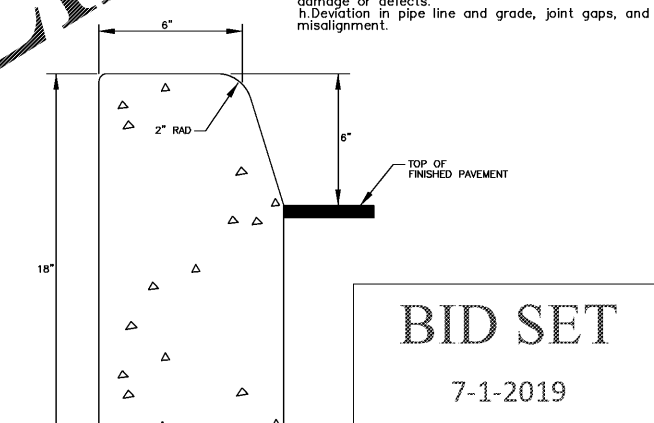


PAVING GRADING AND DRAINAGE NOTES

- ALL PROPOSED IMPROVEMENTS TO THE SITE TO BE STAKED IN THE FIELD BY OR UNDER THE SUPERVISION OF A FLORIDA REGISTERED LAND SURVEYOR.
- THE CONTRACTOR IS TO PROVIDE THE ENGINEER OF RECORD WITH REPRODUCIBLE AS-BUILT DRAWINGS SHOWING ALL IMPROVEMENT LOCATIONS AND ELEVATIONS.
- ALL PROPOSED CONSTRUCTION IS TO MEET OR EXCEED LATEST APPLICABLE MANATEE COUNTY CONSTRUCTION STANDARDS AND TO CONFORM TO ENGINEERS/ARCHITECTS SPECIFICATIONS. PROPOSED CONSTRUCTION IS TO BE PRIVATELY OWNED AND OPERATED.
- TO PREVENT SEDIMENTARY RUNOFF DURING CONSTRUCTION, HAY BALES OR INLET DEBRIS CONTROL SCREENS TO BE PLACED AT ALL INLET OR OUTFALL LOCATIONS. STORMWATER TREATMENT FACILITIES TO BE CONSTRUCTED EARLY IN SITE DEVELOPMENT, WITH NO OFF-SITE, UNTREATED RUNOFF OCCURRING DURING CONSTRUCTION.
- THE CONTRACTOR IS TO COORDINATE THE LOCATION AND ELEVATION OF ALL F.P.L., G.I.E. AND IRRIGATION SERVICE SLEEVES WITH RESPECTIVE AGENCY PRIOR TO CONSTRUCTION.
- ALL UTILITIES AND/OR DRAINAGE SHOWN AS EXISTING ARE TO BE FIELD VERIFIED FOR LOCATION AND ELEVATION PRIOR TO CONSTRUCTION. CONTRACTOR TO NOTIFY "SUNSHINE STATE ONE-CALL" (800) 432-4770, EXT.1, 48 HOURS MINIMUM PRIOR TO START OF CONSTRUCTION FOR POSSIBLE UTILITY LOCATIONS NOT SHOWN.
- THE CONTRACTOR IS TO ASSURE HIMSELF THAT ALL UNDERGROUND UTILITIES AND STORM SEWER ARE CONSTRUCTED, TESTED AND OPERATIONAL PRIOR TO ANY ROADWAY CONSTRUCTION.
- ROADSIDE UNDERDRAIN SHALL BE REQUIRED AS DETERMINED NECESSARY BY THE ENGINEER OF RECORD AND/OR PCPWD INSPECTION DEPARTMENT.
- ALL FILL AREAS TO BE CONSTRUCTED IN 6" LIFTS, 100% STANDARD PROCTOR, AASHTO T-99 UTILIZING SUITABLE MATERIAL.
- PROPER EROSION CONTROL SHALL BE PLACED AROUND SOIL STOCKPILES TO AVOID RUNOFF INTO RECEIVING WATERBODIES.
- STORM SEWER PIPE SHALL BE ALUMINIZED TYPE 2 CMP ULTRA FLOW PIPE, A2000 OR RCP. PER ASTM F-949 AND FDOT SECTION 948; NO POLYETHYLENE OR ADS.
- All the signing and pavement markings shall be provided in accordance with the latest editions of the Manual on Uniform Traffic Control Devices (MUTCD), FDOT Design Standards, and the Manatee County Public Works Department - Highway Traffic and Stormwater Standards. Traffic control devices that do not conform to the latest edition of the Manatee County Public Works Department Highway Traffic and Stormwater Standards within publicly maintained right of way will require a sign and hardware diagram and accessible, executed Maintenance Agreement prior to approval of Construction Plans.
- Video inspection required for all CMP/RCP pipes.

For pipe 6 inches or less in diameter, provide the Engineer a video DVD and report using low barrel distortion video equipment with laser profile technology, non-contact goniometer and associated software (or approved equal) that reads:

- Actual recorded length and width measurements of all cracks within the pipe.
- Actual recorded separation measurement of all pipe joints.
- Pipe ovality report.
- Deflection measurements and graphical diameter analysis report in terms of x and y axis.
- Flat analysis report.
- Representative diameter of the pipe.
- Pipe deformation measurements, leaks, debris, or other damage or defects.
- Deviation in pipe line and grade, joint gaps, and joint misalignment.

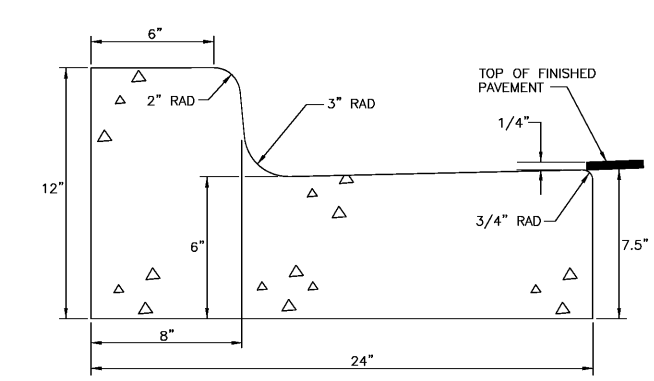


BID SET
7-1-2019

TYPE "D" HIGH BACK CURB

- CLASS 1 CONCRETE, 3,000 P.S.I. AT 28 DAYS.
- CURB SHALL MEET THE SPECIFICATIONS ESTABLISHED BY F.D.O.T. STANDARD SPECIFICATIONS PER F.D.O.T. ROADWAY AND TRAFFIC DESIGN STANDARDS INDEX NO. 300, LATEST REVISION.

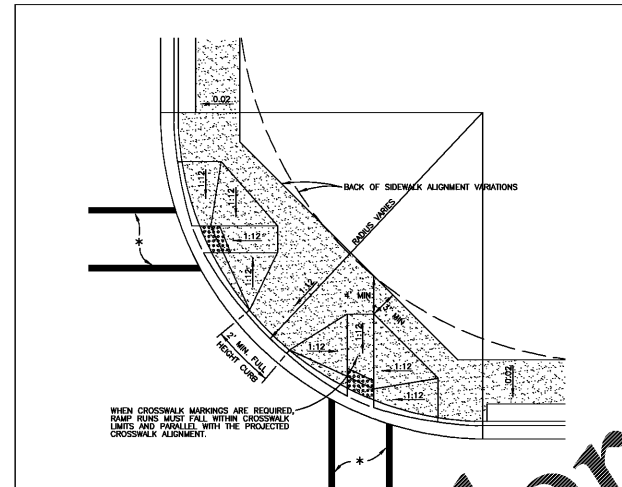
TYPE D CURB 201.4
NTS



TYPE "F" BARRIER CURB & GUTTER

- CLASS 1 CONCRETE 3,000 P.S.I. AT 28 DAYS.
- CURB AND GUTTER SHALL MEET THE SPECIFICATIONS ESTABLISHED BY FLORIDA D.O.T. STANDARD SPECIFICATIONS PER F.D.O.T. ROADWAY AND TRAFFIC DESIGN STANDARDS INDEX NO. 300, LATEST REVISION.

TYPE F CURB & GUTTER 201.2
NTS

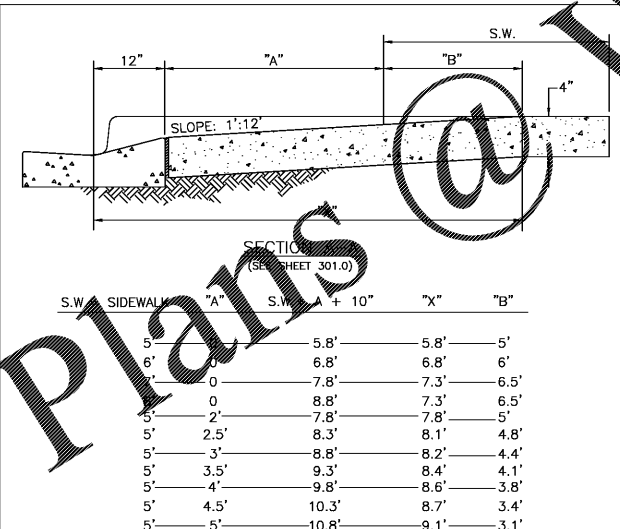


* CROSSWALK WIDTHS AND CONFIGURATION VARY. MUST CONFORM TO FDOT INDEX NO. 17344 AND 17346.

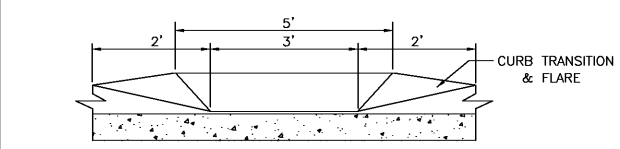
- CURB CUT RAMP ARE TO BE LOCATED AS SHOWN ON PLAN.
- SEE SHEETS # 300.1 "GENERAL NOTES" & 301.2 "HANDICAPPED RAMP SHEET 2" FOR FURTHER REQUIREMENTS.
- RADIUS OF CURB VARIES AS FOLLOWS:
 - 25' RAD. LOCAL STREET WITH ALLEY.
 - 25' RAD. LOCAL STREET WITH LOCAL STREET.
 - 35' RAD. LOCAL STREET WITH THOROUGHFARE OR COLLECTOR.
 - 50' RAD. THOROUGHFARE WITH THOROUGHFARE.
- CURB RADIUS SHOULD BE A MINIMUM OF 50' WHERE INDUSTRIAL AND BUS TRAFFIC (5% OR MORE) IS ANTICIPATED ON LOWER CLASSIFICATION ROADWAYS.
- BOTH LOCATION OPTIONS FOR HANDICAPPED RAMP ARE SHOWN. ENGINEER MAY SELECT EITHER, WHICHEVER FITS THE SITUATION.

NOTE: FOR COMPLETE HANDICAP, PUBLIC SIDEWALK AND CURB RAMP DETAILS, SEE F.D.O.T. DESIGN STANDARDS, 2006 EDITION, INDEX 304, SHEETS 1 THROUGH 6.

MANATEE COUNTY TRANSPORTATION DEPARTMENT		HANDICAPPED RAMP SHEET 1	302.1
REV. BY	DATE		
	6/12/07		
DATE OF B.O.C.C. APPROVAL			



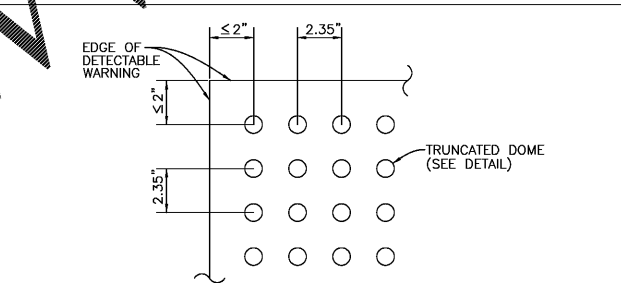
NOTE: FOR COMPLETE HANDICAP, PUBLIC SIDEWALK AND CURB RAMP DETAILS, SEE F.D.O.T. DESIGN STANDARDS, 2006 EDITION, INDEX 304, SHEETS 1 THROUGH 6.



SECTION B-B (SEE SHEET 301.0)

NOTE: FOR COMPLETE HANDICAP, PUBLIC SIDEWALK AND CURB RAMP DETAILS, SEE F.D.O.T. DESIGN STANDARDS, 2006 EDITION, INDEX 304, SHEETS 1 THROUGH 6.

MANATEE COUNTY TRANSPORTATION DEPARTMENT		HANDICAPPED RAMP SHEET 2	302.2
REV. BY	DATE		
	6/12/07		
DATE OF B.O.C.C. APPROVAL			



TRUNCATED DOME CURB RAMP DETECTABLE WARNING DETAIL

- NOTES:
- DETECTABLE WARNINGS ON WALKING SURFACES**
- THE DETECTABLE WARNING SHALL EXTEND THE FULL WIDTH AND DEPTH OF THE CURB RAMP.
- DETECTABLE WARNINGS SHALL CONSIST OF RAISED TRUNCATED DOMES WITH A DIAMETER OF NOMINAL 0.9 INCH, A HEIGHT OF NOMINAL 0.2 INCH AND A CENTER-TO-CENTER SPACING OF NOMINAL 2.35 INCH AND SHALL CONTRAST VISUALLY WITH ADJOINING SURFACES, EITHER LIGHT-ON-DARK, OR DARK-ON-LIGHT.
- THE MATERIAL USED TO PROVIDE CONTRAST SHALL BE AN INTEGRAL PART OF THE WALKING SURFACE. DETECTABLE WARNINGS USED ON INTERIOR SURFACES SHALL DIFFER FROM ADJOINING WALKING SURFACES IN RESILIENCY OR SOUND-ON-CANE CONTACT.
- THE MATERIAL USED TO PROVIDE CONTRAST SHOULD CONTRAST BY AT LEAST 70%. CONTRAST IN PERCENT IS DETERMINED BY:
- $$\text{CONTRAST} = [(B1 - B2) / B1] \times 100$$
- WHERE B1 = LIGHT REFLECTANCE VALUE (LRV) OF THE LIGHTER AREA AND B2 = LIGHT REFLECTANCE VALUE (LRV) OF THE DARKER AREA.
- NOTE THAT IN ANY APPLICATION BOTH WHITE AND BLACK ARE NEVER ABSOLUTE; THUS, B1 NEVER EQUALS 100 AND B2 IS ALWAYS GREATER THAN 0.

DETECTABLE WARNINGS ON WALKING SURFACES

NOTE: FOR COMPLETE HANDICAP, PUBLIC SIDEWALK AND CURB RAMP DETAILS, SEE F.D.O.T. DESIGN STANDARDS, 2006 EDITION, INDEX 304, SHEETS 1 THROUGH 6.

MANATEE COUNTY TRANSPORTATION DEPARTMENT		CURB RAMP DETECTABLE WARNINGS	302.3
REV. BY	DATE		
	6/12/07		
DATE OF B.O.C.C. APPROVAL			

HOUGH ENGINEERING, INC.
CONSULTING ENGINEERS
1771 MANATEE AVE. W., BRADENTON FLORIDA 34205
PHONE : (941) 747-4838 • FAX : (941) 747-4072



DATE	06/02/2019
DESCRIPTION	ADD SUPPLEMENT AND ADD NOTES 1A & 11.00
DATE	06/27/2019
DESCRIPTION	NTS
PROJECT NO.	SEP-01

7-ELEVEN, PARRISH
Paving, Grading & Drainage Details

LOCATED IN SECTION 33, TOWNSHIP: 33S, RANGE: 19E
MANATEE COUNTY, FLORIDA

DATE	
SHEET NO.	6