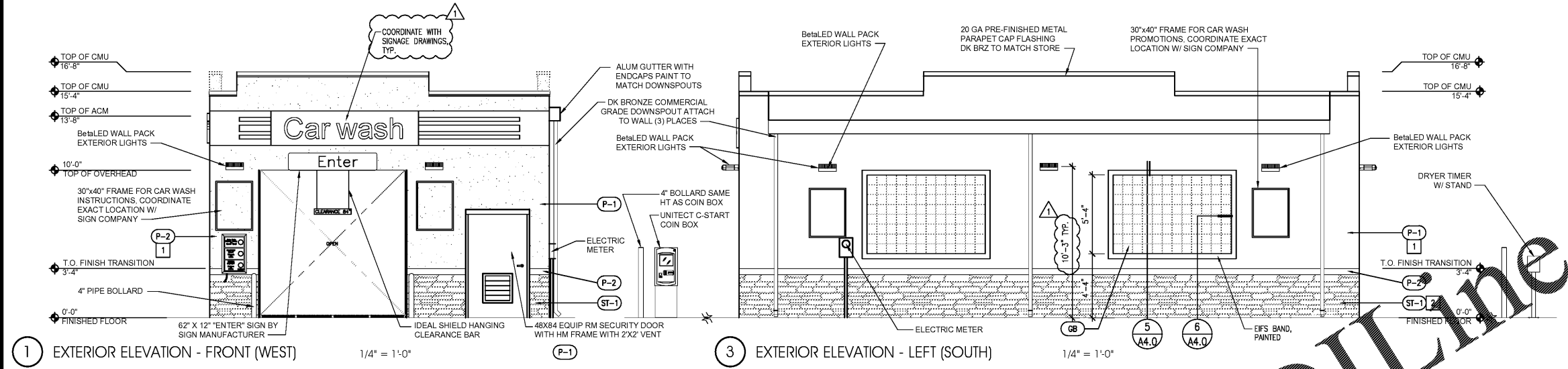


SEAL:

THIS DOCUMENT IS NOT
FOR REGULATORY
APPROVAL, PERMITTING,
OR CONSTRUCTION.



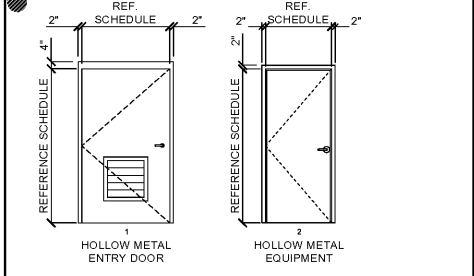
1 EXTERIOR ELEVATION - FRONT (WEST) 1/4" = 1'-0"

3 EXTERIOR ELEVATION - LEFT (SOUTH) 1/4" = 1'-0"

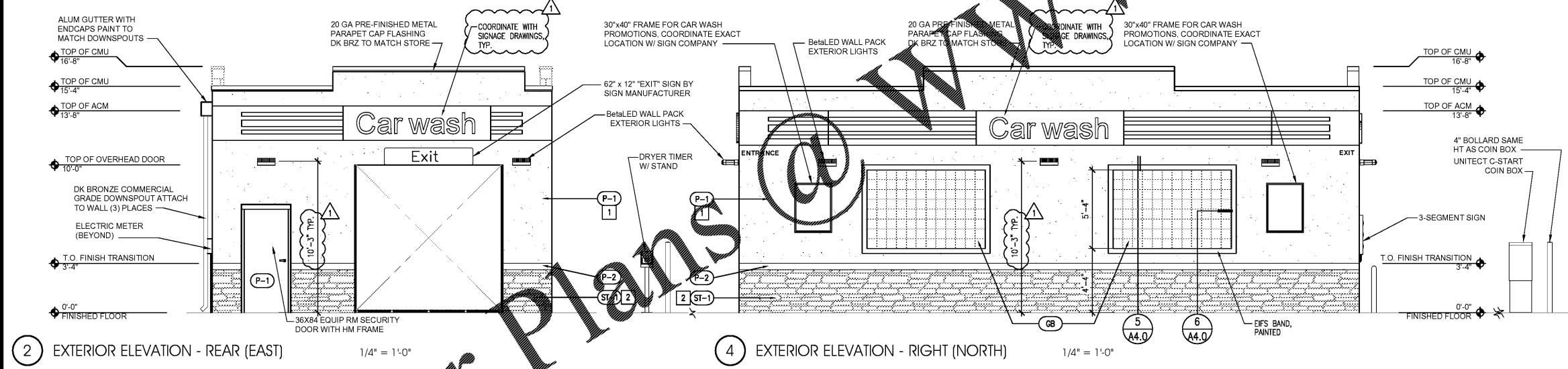
| DOOR SCHEDULE (DRS. BY 7-ELEVEN AND INSTALLED BY GC) | | | | | | | | | | |
|--|------------|-----------|--------------|-------|--------|----------------|---------------|--------------|----------|-----------|
| DOOR NUMBER | ROOM NAME | DOOR TYPE | HARDWARE SET | WIDTH | HEIGHT | DOOR THICKNESS | MATERIALS | | | COMMENTS |
| | | | | | | | ALUM. & GLASS | HOLLOW METAL | ALUMINUM | |
| 102A | EQUIP. RM. | 1 | 1 | 4'-0" | 7'-0" | 1 3/4" | X | X | X | WITH VENT |
| 102B | EQUIP. RM. | 2 | 2 | 3'-0" | 7'-0" | 1 3/4" | X | X | X | |

| DOOR HARDWARE (DRS. BY 7-ELEVEN AND INSTALLED BY GC) | | | | | | | | | | |
|--|------------|-----------|-----------------|---------|----------|----|--|--|--|--|
| HARDWARE SET NO. 1 (ENTRY DOOR) | | | | | | | | | | |
| 3 EA. | BUTTS | TA2714 | 4-1/2" X 4-1/2" | NRP 26D | MCKINNEY | HD | | | | |
| 1 EA. | CHAIN STOP | | | | | | | | | |
| 1 SET | WTHR STRIP | 319CR | | | PEMCO | | | | | |
| 1 EA. | RAIN DRIP | 319CR | | | PEMCO | | | | | |
| 1 EA. | THRESHOLD | 346-C-36" | ALUM | | PEMCO | | | | | |
| 1 EA. | LOCK SET | 8245 LNJ | 26D | | SARGENT | | | | | |
| 1 EA. | LOCK GUARD | LGI 32D | | | IVES | | | | | |

| HARDWARE SET NO. 2 (EQUIPMENT) | | | | | | | | | | |
|--------------------------------|------------|-----------|-----------------|---------|----------|----|--|--|--|--|
| 1-1/2 PAIR | BUTTS | TA2714 | 4-1/2" X 4-1/2" | NRP 26D | MCKINNEY | HD | | | | |
| 1 EA. | CHAIN STOP | | | | | | | | | |
| 1 SET | WTHR STRIP | 319CR | | | PEMCO | | | | | |
| 1 EA. | RAIN DRIP | 346-C-36" | ALUM | | PEMCO | | | | | |
| 1 EA. | THRESHOLD | 170-A-36" | | | PEMCO | | | | | |
| 1 EA. | LOCK SET | 8245 LNJ | 26D | | SARGENT | | | | | |
| 1 EA. | LOCK GUARD | LGI 32D | | | IVES | | | | | |



2 DOOR FRAMES 1/4" = 1'-0"



2 EXTERIOR ELEVATION - REAR (EAST) 1/4" = 1'-0"

4 EXTERIOR ELEVATION - RIGHT (NORTH) 1/4" = 1'-0"

| EXTERIOR MATERIALS SCHEDULE | | |
|-----------------------------|--|--|
| NO. | MATERIAL | MANUF.-COLOR |
| MR-1 | MEMBRANE ROOFING | DUROLAST - WHITE |
| P-1 | ABOVE WATER TABLE (ABOVE 3'-4") | SHERWIN WILLIAMS - AESTHETIC WHITE SW7035 |
| P-2 | WATER TABLE AND BELOW (3'-4" AND BELOW) | SHERWIN WILLIAMS - BALANCED BEIGE SW7037 |
| P-3 | EXTERIOR HM DOORS, FRAMES, TRASH ENCLOSURE, GATE, GRAVEL GAUDES, AND LIGHT POLES | SHERWIN WILLIAMS - SEAL SKIN SW7675 |
| P-6 | EXTERIOR BOLLARDS | SHERWIN WILLIAMS - SEAL SKIN SW7675 |
| P-9 | PIPING, ROOF CAPS | SHERWIN WILLIAMS - SEAL SKIN SW7675 |
| S-1 | ALUMINUM STOREFRONT GLAZING | KAWNEER 1R350/1R501 |
| C-1 | PREFINISHED ALUMINUM CANOPY | MAPES LUMSHADE CANOPY - BRONZE BAKED ENAMEL W/ REAR GUTTER CONNECTIONS |
| ST-1 | STACK STONE | BORAL-COUNTY LEDGE STONE - ASPEN |
| GB-1 | 8"x8"x4" GLASS BLOCK | CLEAR BLOCK, NO PATTERN |

1 03.18.19 PEER COMMENTS
NO. DATE REMARKS
REVISIONS



BID SET
JUNE 27, 2019

7-ELEVEN
STORE #38777

12060 US 301 N
PARRISH, FL
34219

PROJECT NO: 2018.0891
DATE: FEBRUARY 26, 2019

CWA1
CAR WASH ELEVATIONS
AND SCHEDULES

CHECKED: RW DRAWN: JUM

Order Plans

WWW.LDILINE

COPYRIGHT © 2019 INTERPLAN LLC. RESERVE COPYRIGHT & OTHER RIGHTS RESTRICTING THESE DOCUMENTS TO THE ORIGINAL USE OR REPRODUCTION OF WHICH THEY WERE PREPARED. REPRODUCTIONS, CHANGES OR ASSIGNMENTS ARE PROHIBITED.