

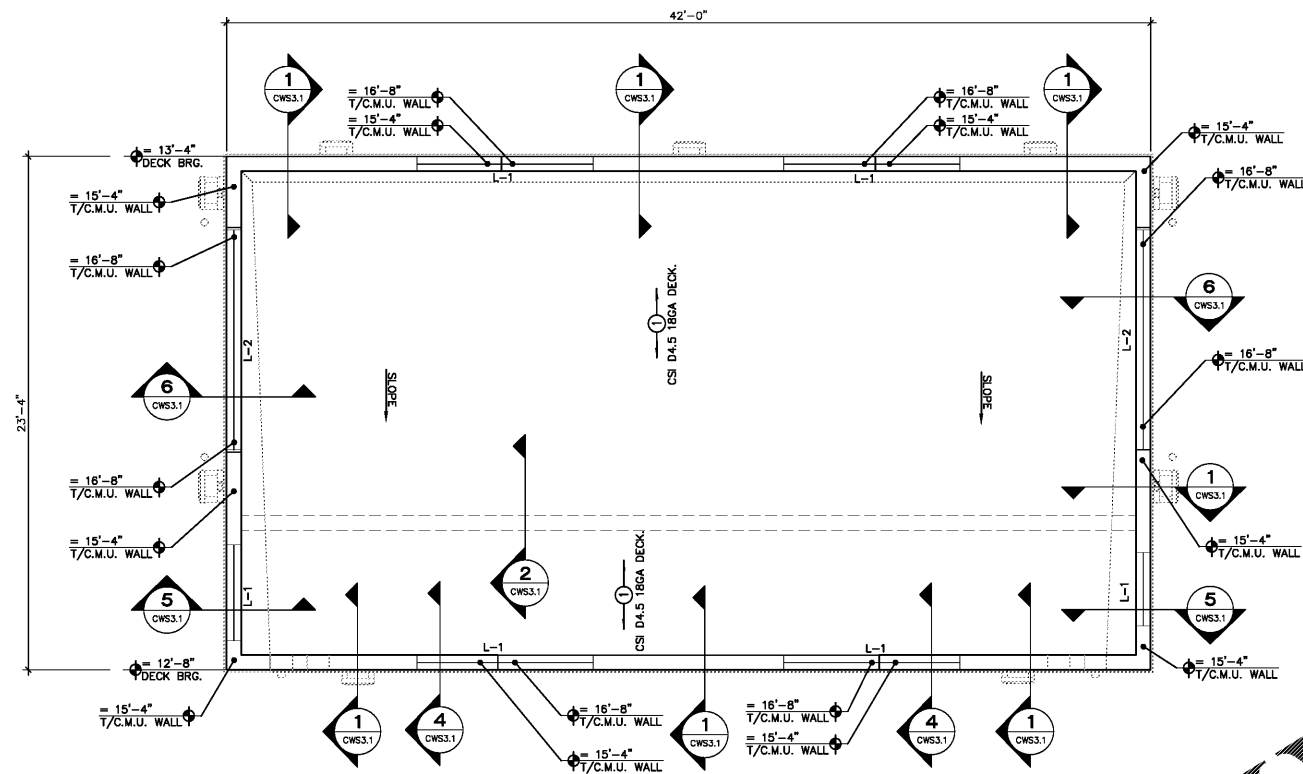
SEAL:

THIS DOCUMENT IS NOT
FOR REGULATORY
APPROVAL, PERMITTING,
OR CONSTRUCTION.

BJARNE MADSEN, P.E.
FL 58683



1673 LAKE BALDWIN LANE
ORLANDO, FLORIDA 32814
PH. (407) 252-4225
LIC EB28029
PROJECT # IP19-05



ROOF FRAMING PLAN

1/4" = 1'-0"

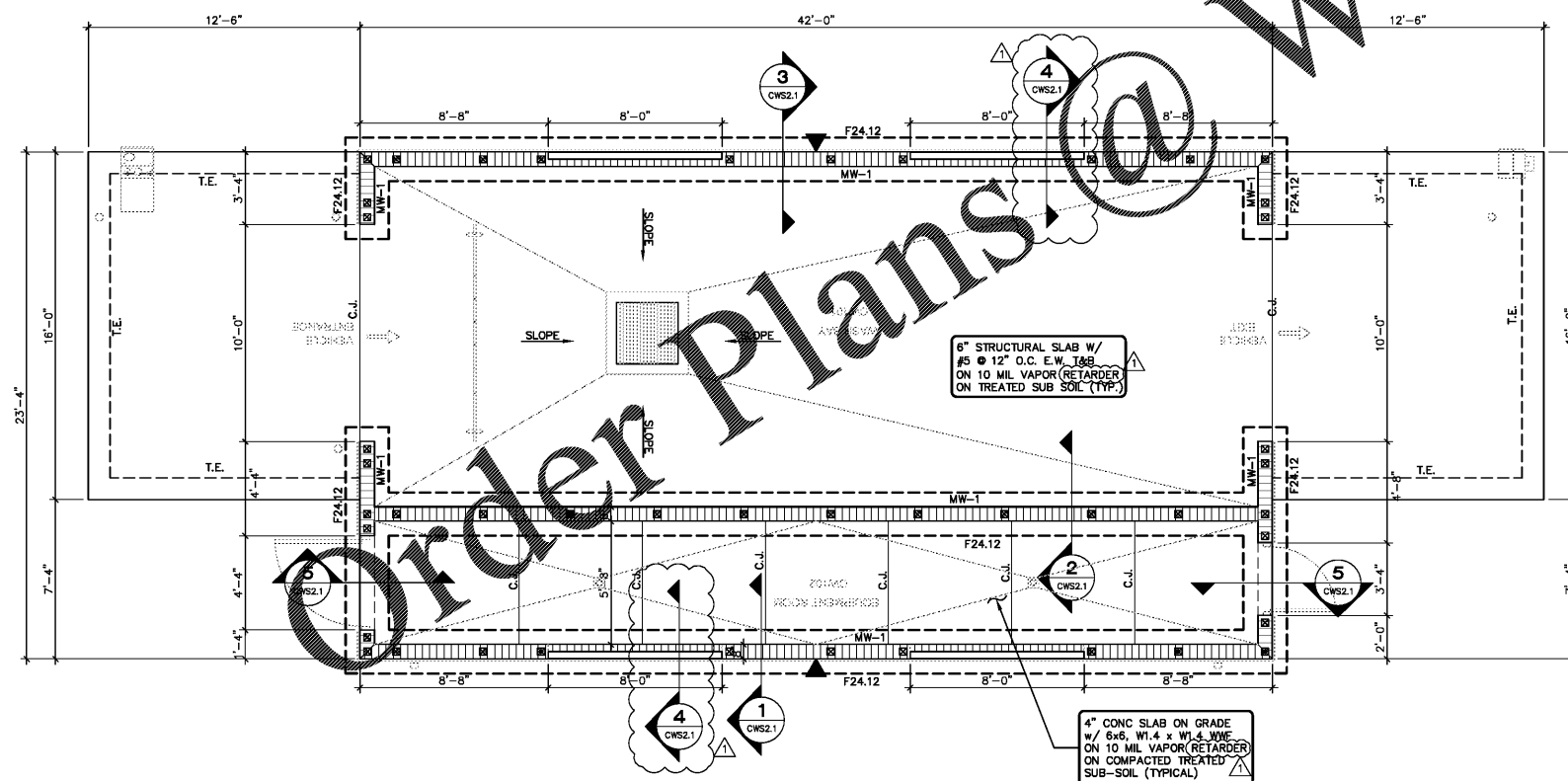


ROOF FRAMING NOTES:

- 1.) SEE PLAN FOR POST BEARING ELEVATION.
- 2.) INDICATES CSI D4.5 18GA DECK. SEE NOTES ON CWS0.1
- 3.) SEE ARCH FOR DIMENSIONS NOT SHOWN.
- 4.) VERIFY TYPICAL WEIGHTS AND LOCATIONS WITH MECH. PRIOR TO FABRICATION AND CONSTRUCTION. SEE SHEET S4.1 FOR TYP ROOF OPENING/HVAC SUPPORT FRAMING DETAIL.
- 5.) INDICATES PRECAST LINTEL, SEE SCHEDULE ON CWS3.1.
- 6.) ROOF DECK SHALL BE ATTACHED TO STRUCTURAL STEEL SUPPORTS WITH 1/2" EFFECTIVE WELD DIAMETER IN 12/2 PATTERN. SIDE LAP SHALL BE #10 SCREWS AT 18" O.C.

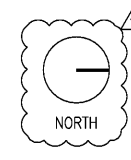
NOTE: VERIFY W/ ARCH. DRAWINGS ALL TOP OF PARAPET ELEVATIONS AND REPORT DISCREPANCIES TO THE ARCHITECT PRIOR TO FABRICATION AND CONSTRUCTION.

NOTE: VERIFY W/ ARCH. DRAWINGS ALL WALL OPENING SIZES AND LOCATIONS AND REPORT DISCREPANCIES TO THE ARCHITECT PRIOR TO FABRICATION AND CONSTRUCTION.



FOUNDATION PLAN

1/4" = 1'-0"



FOUNDATION NOTES:

1. ELEV. ±0'-0" IS REFERENCE ONLY. SEE CIVIL FOR TRUE NGVD ELEVATION.
2. S.C. INDICATES SAW CUT SEE CWS2.1 FOR DETAILS.
3. TOP OF FOOTING ELEVATION = -1'-4" BELOW GRADE.
4. VERIFY SLOPES AND STEPS WITH ARCH'L PRIOR TO CONSTRUCTION. SEE TYPICAL STEP DETAIL ON CWS2.1.
5. F## DENOTES CONCRETE FOOTING, SEE SCHEDULE ON CWS2.1.
6. INDICATES FILLED CELL. ALL MASONRY WALLS ARE MW-1 U.N.O., SEE SCHEDULE ON CWS2.1 FOR SIZE AND SPACING OF REBAR.
7. INDICATES WALL CONTROL JOINT, SEE DETAIL ON CWS2.1.
8. T.E. DENOTES THICKENED EDGE, SEE DETAIL ON CWS2.1.

1 03/19/19 PEER COMMENTS
NO. DATE REMARKS

REVISIONS



BID SET
JUNE 27, 2019

7-ELEVEN
STORE #38777

US 301 & FORT HAMER RD.
PARRISH, FL
34219

PROJECT NO: 2018.0891
DATE: FEBRUARY 26, 2019

CWCWS1.

CAR WASH
STRUCTURAL PLANS

CHECKED: BM DRAWN: RED

Order Plans @

WWW.LADLINE.COM

COPYRIGHT © 2019 INTERPLAN LLC. REPRODUCE OR TRANSMIT IN ANY FORM OR BY ANY MEANS, ELECTRONIC OR MECHANICAL, INCLUDING PHOTOCOPYING, RECORDING, OR BY ANY INFORMATION STORAGE AND RETRIEVAL SYSTEM, WITHOUT PERMISSION IN WRITING FROM INTERPLAN LLC. ALL RIGHTS RESERVED. THIS DOCUMENT IS THE PROPERTY OF INTERPLAN LLC. ANY REPRODUCTION OR TRANSMISSION OF THIS DOCUMENT WITHOUT THE WRITTEN PERMISSION OF INTERPLAN LLC IS PROHIBITED.