

SEAL:

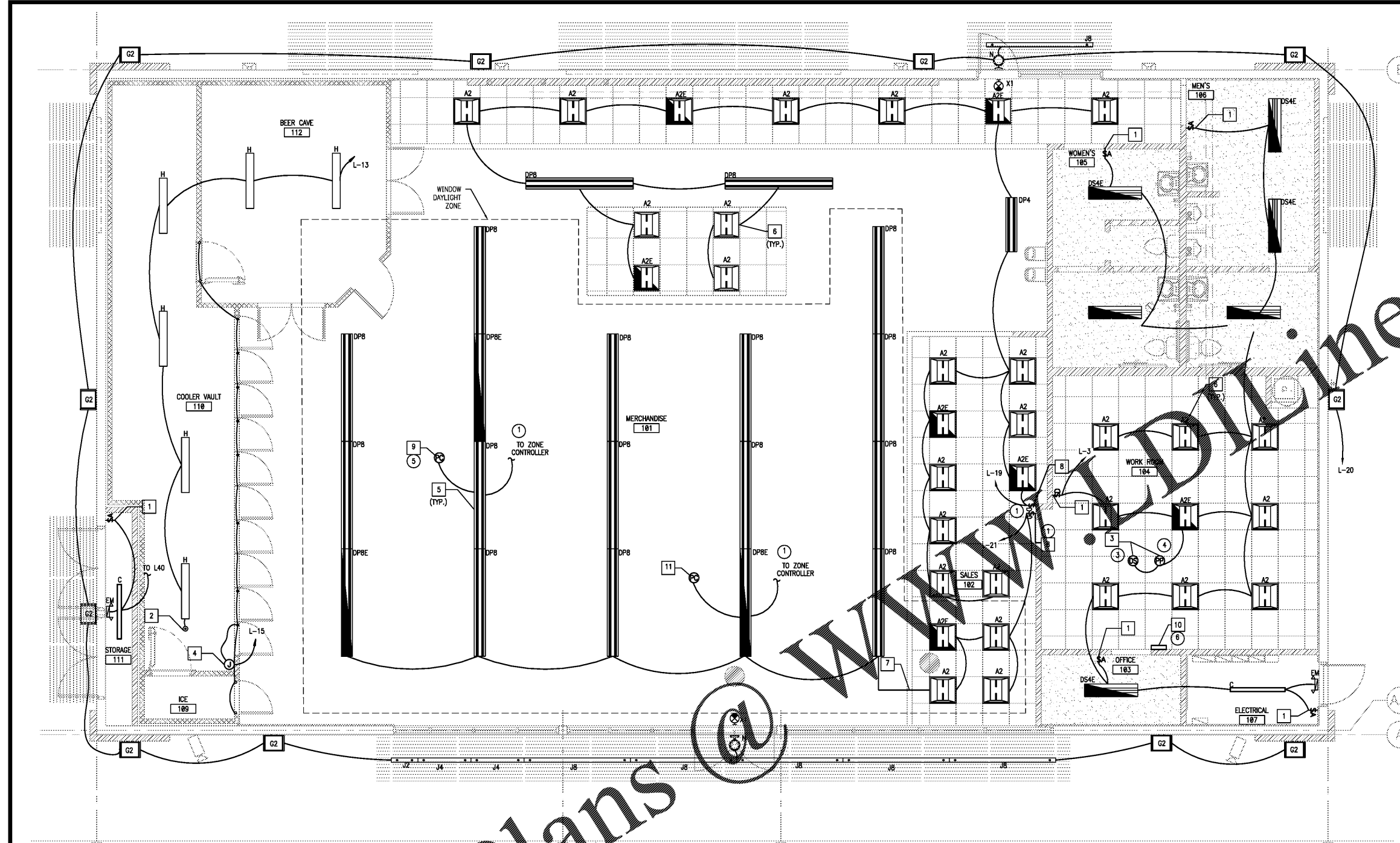
THIS DOCUMENT IS NOT
FOR REGULATORY
APPROVAL, PERMITTING,
OR CONSTRUCTION.

GENERAL NOTES

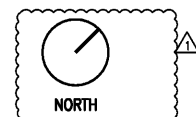
- EMERGENCY EXIT ILLUMINATION SHALL BE SUPPLIED FROM STORAGE BATTERY THAT IS TO PROVIDE 90 MINUTES OF CONTINUED ILLUMINATION IN CASE OF A PRIMARY POWER LOSS.
- THE BRANCH CIRCUIT FEEDING THE UNIT EQUIPMENT (EMERGENCY LIGHT/EXIT SIGN WITSELF-CONTAINED RECHARGEABLE BATTERY) SHALL BE THE SAME BRANCH CIRCUIT AS THAT SERVING THE NORMAL LIGHTING IN THE AREA AND CONNECTED AHEAD OF ANY LOCAL SWITCHES OR TIME CLOCKS AS SHOWN ON PLAN.
- EMERGENCY LUMINAIRES SHALL PROVIDE AN INITIAL AVERAGE ILLUMINATION LEVEL OF AT LEAST 1 FOOT-CANDLE BUT AT ANY POINT IT SHALL NOT BE LESS THAN 0.1 FOOT-CANDLE ALONG THE PATH OF EGRESS AT FLOOR LEVEL.
- AT THE END OF THE REQUIRED EMERGENCY SOURCE TIME DURATION, THE EMERGENCY LUMINAIRES SHALL PROVIDE AN AVERAGE ILLUMINATION LEVEL OF AT LEAST 0.6 FOOT-CANDLE BUT AT ANY POINT IT SHALL NOT BE LESS THAN 0.06 FOOT-CANDLE ALONG THE PATH OF EGRESS AT FLOOR LEVEL.
- THE EMERGENCY ILLUMINATION LEVEL SHALL HAVE A MINIMUM-TO-MAXIMUM EMERGENCY ILLUMINATION UNIFORMITY RATIO THAT DOES NOT EXCEED 40:1.
- CONDUIT AND WIRING AREAS WHERE EXPOSED SHALL BE ROUTED AT 90 DEGREE ANGLES PERPENDICULAR OR PARALLEL TO JOISTS. COORDINATE PAINTING OF CONDUIT WITH FINISH GENERAL FINISHES.
- SEE LEVELTON COMPONENTS SCHEDULE ON THIS SHEET FOR DETAILS.

KEYED NOTES

- OCCUPANCY SENSOR 'A', RE-6/E1.5, 4+2", TYP. WITH MANUAL OVERRIDE.
- OCCUPANCY SENSOR 'B', RE-5/E1.5, TYP.
- LEVELTON MODEL OSC20-MOW OCCUPANCY/VACANCY SENSOR (OS) WITH LEVELTON MODEL OPP20-D2 POWER PACK (PP) LOCATED IN CEILING PLENUM.
- 13W LED COOLER DOOR LIGHTS PROVIDED AND INSTALLED BY COOLER DOOR MANUFACTURER, E.C. TO PROVIDE WIRING FOR COOLER/ FREEZER DOOR LIGHTS AND CONNECT TO MANUFACTURER SUPPLIED JUNCTION BOX.
- MOUNT AT 9"-4" TO BOTTOM, RE-4/E1.5. TYPICAL OF ALL LOCATIONS.
- REFER TO RECESSED FIXTURE MOUNTING DETAIL, RE: 3/E1.5, TYP.
- LINE VOLTAGE WIRING AT THE STOREFRONT IN OPEN CEILING AREAS SHALL BE ROUTED THROUGH A NONMETALLIC RACEWAY SYSTEM. THERE SHALL BE NO EXPOSED WIRING IN THE SALES AREA. RACEWAY SHALL RUN ACROSS THE FRONT WALL AND DOWN TO THE EXIT SIGN. RE-5/E1.4 FOR MORE INFORMATION. OWNER TO PROVIDE LEGRAND 400 SERIES SYSTEM WITH ALL FITTINGS AND DEVICE BOXES REQUIRED FOR CONNECTION TO EXIT SIGN.
- LEVELTON MODEL RLYSW-4LW 4-BUTTON WALL MOUNTED CONTROL FOR MANUAL ON/OFF/DIMMING. RE: 2/E1.5 FOR FACTORY WIRING DIAGRAM. USE SEPARATE SWITCHES FOR EACH ZONE.
- LEVELTON MODEL PCSKY PHOTOCELL (PC) MOUNTED ON CEILING FOR AUTOMATIC DAYLIGHT CONTROL. RE: 2/E1.5 FOR FACTORY WIRING DIAGRAM.
- LEVELTON MODEL WZD30-101 3-ZONE ROOM CONTROLLER LOCATED IN CEILING PLENUM NEAR MANAGER'S OFFICE.
- LEVELTON MODEL ODOOP-OOW WINDOW DAYLIGHT SENSOR.



1 LIGHTING PLAN
1/4" = 1'-0"

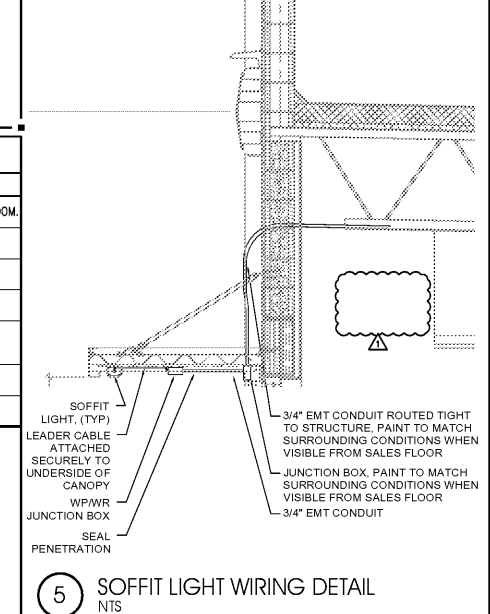


TYPE	MANUFACTURER	CATALOG NUMBER	VOLTS/PHASE	WATTS	AMPS	TYPE	MOUNTING	DESCRIPTION	QTY
A2	GE	LBT-22-0-A3-A-V-WHITE-S	120/277V, 1	32	0.27	LED	RECESSED	LED 2 X 2 RECESSED TROFFER; 0-10V; 4000K	26
A2E	GE	LBT-22-0-A3-A-V-WHITE-EL-S	120/277V, 1	32	0.27	LED	RECESSED	LED 2 X 2 RECESSED TROFFER W/ EMERGENCY BACK-UP; 0-10V; 4000K	7
C	PHILIPS	LF4EZ380ULAC	120/277V, 1	42	0.35	LED	SURFACE	LED SURFACE LINEAR 4"; 4000K	2
DP4	GE	ISC40AMWHWP	120/277V, 1	33	0.27	LED	PENDANT	LED 1X4 SUSPENDED CONTINUOUS; 4000K	1
DPB	GE	ISC80AMWHWP	120/277V, 1	73	0.61	LED	PENDANT	LED 1X8 SUSPENDED CONTINUOUS; 4000K	16
DPBE	GE	ISC80AMWHWP	120/277V, 1	73	0.61	LED	PENDANT	LED 1X8 SUSPENDED CONTINUOUS W/ EMERGENCY BACK-UP; 4000K	3
DS4E	CREZ	CR-LE-SE4040CS-EB14 SMK	120/277V, 1	40	0.33	LED	SURFACE	1X4 SURFACE MOUNT LIGHT W EMERGENCY BACK-UP; 4000K	6
EM	PHILIPS	VU6-C	120/1	11	0.09	LED	UNIVERSAL	EMERGENCY FIXTURE W/ 90 MINUTE BATTERY BACKUP	2
G2	GE	EWS30C7E150	120/277V, 1	41	0.34	LED	WALL	LED WALL PACK; 5000K	11
H	PHILIPS	DWAE35L8404UN	120/277V, 1	32	0.27	LED	SURFACE	LED INTEGRATED; SURFACE MOUNT 1X4; "GASKETED"; 4000K	6
J8	GE	GEW109641BAT-SY	120/277V, 1	36	0.3	LED	SURFACE	LED BATTEN 96"; 4000K	6
J2	GE	GEW102441BAT-SY	120/277V, 1	9	0.075	LED	SURFACE	LED BATTEN 24"; 4000K	1
J4	GE	GEW104841BAT-SY	120/277V, 1	16	0.133	LED	SURFACE	LED BATTEN 48"; 4000K	2
N	PHILIPS	PLEMBZ	120/277V, 1	24	0.2	LED	WALL	LED WALL MOUNT; EMERGENCY BATTERY BACK-UP; 4500K	2
X1	PHILIPS	VERWEM	120/277V, 1	2	0.017	LED	UNIVERSAL	LED EXIT (RED) LETTERS; EMERGENCY BATTERY BACK-UP	2

INTERIOR CEILING LIGHTING FIXTURE PACKAGE
UNLESS OTHERWISE NOTED 7-ELEVEN SHALL FURNISH THE INTERIOR AND EXTERIOR LIGHTING FIXTURE PACKAGE-- (INSTALLED BY G.C.)

LIGHT SWITCHES
ALL OCCUPANCY SENSING SWITCHES ARE TO BE MULTI-TECHNOLOGY WALL SWITCH SENSOR, 1200 SQ. FT. MAJOR MOTION COVERAGE, 400 SQ. FT., MINOR MOTION COVERAGE, 800W@120V INC, 1200VA@120V FL, 2700VA@277V FL, 1/4HP@120V MOTOR, COMMERCIAL GRADE - WHITE CALIFORNIA TITLE 24 COMPLIANT. ALL TO BE PROVIDED AND INSTALLED BY G.C.

LEVELTON COMPONENTS SCHEDULE			
TYPE	MANUFACTURER	PART NUMBER	DESCRIPTION
1	LEVELTON	RLYSW-4LW	4-BUTTON WALL MOUNTED CONTROL FOR MANUAL ON/OFF/DIMMING LOCATED BY ENTRANCE DOOR TO BACK ROOM.
2	LEVELTON	DS710-10Z	DIMMER SWITCH LOCATED IN STOCKROOM FOR MANUAL CONTROL OF STOCKROOM LIGHTING.
3	LEVELTON	OSC20-MOW	OCCUPANCY/VACANCY SENSOR CEILING MOUNTED IN STOCKROOM FOR AUTOMATIC CONTROL OF STOCKROOM LIGHTING.
4	LEVELTON	OPP20-D2	POWER PACK LOCATED IN CEILING PLENUM NEAR MANAGER'S OFFICE.
5	LEVELTON	PCSKY	PHOTOCELL (PC) MOUNTED ON CEILING IN SKYLIGHT ZONE FOR AUTOMATIC DAYLIGHT CONTROL.
6	LEVELTON	WZD30-102	3-ZONE ROOM CONTROLLER LOCATED IN CEILING PLENUM NEAR MANAGER'S OFFICE.
7	LEVELTON	ODOOP-OOW	WINDOW DAYLIGHT SENSOR



5 SOFFIT LIGHT WIRING DETAIL

NO.	DATE	REVISIONS	REMARKS
1	03.18.19	PEER COMMENTS	



BID SET
JUNE 27, 2019

7-ELEVEN
STORE #38777

12060 US 301 N
PARRISH, FL
34219

PROJECT NO: 2018.0891
DATE: FEBRUARY 26, 2019

E2.0
LIGHTING PLAN

CHECKED: BKJ DRAWN: MM

COPYRIGHT © 2019 INTERPLAN LLC. RESERVE RIGHTS RESTRICTING THESE DOCUMENTS TO THE ORIGINAL BEE OR TAMPORING WHICH THEY WERE PREPARED. REPRODUCTIONS, CHANGES OR ASSIGNMENTS ARE PROHIBITED.