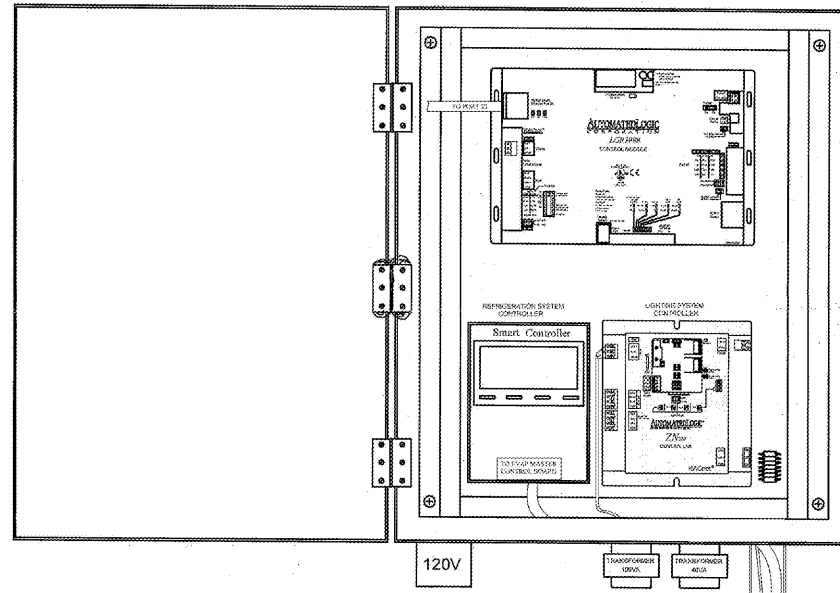
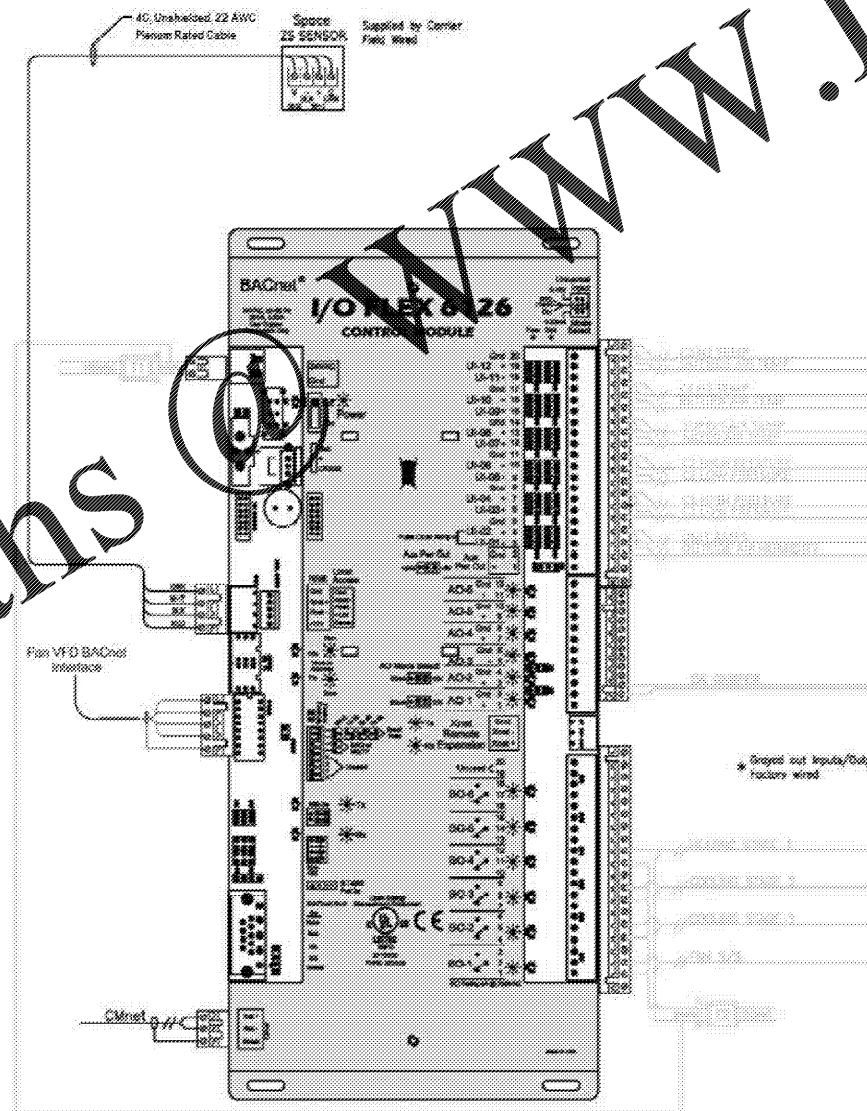


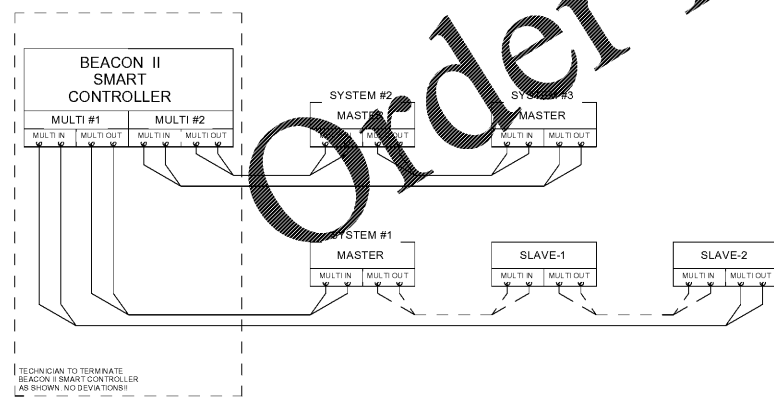
4 LIGHTING CONTROLS CONNECTION DIAGRAM  
1'-0" = 1'-0"



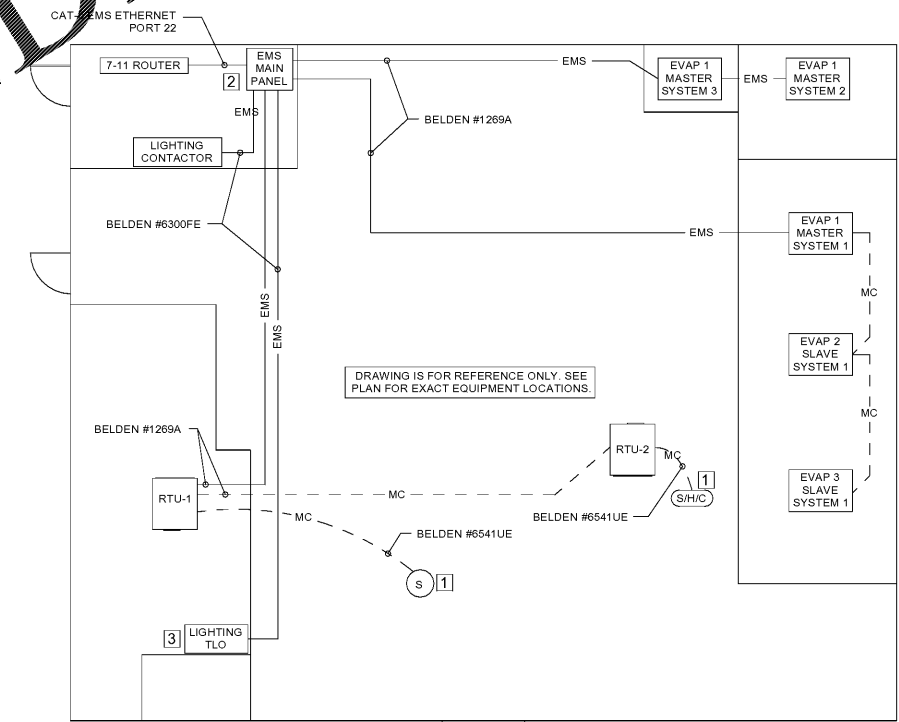
5 EMS CONTROL PANEL  
1'-0" = 1'-0"



2 RTU CONNECTION DIAGRAM  
1'-0" = 1'-0"



3 REFRIGERATION SYSTEM CONNECTION DIAGRAM  
1'-0" = 1'-0"



**CONTRACTOR SCOPE OF WORK**

- SENSOR LOCATIONS TO BE APPROVED BY 7/11 AND ALC PRIOR TO FINAL INSTALLATION. PROVIDE PICTURE OF PROPOSED LOCATION AND SEND TO ALC 10R FOR APPROVAL.
- MECHANICAL CONTRACTOR TO MOUNT / INSTALL SENSOR AND SENSOR WIRING.
- MECHANICAL CONTRACTOR TO INSTALL ALL END DEVICES SHIPPED LOOSE WITH AIR HANDLING EQUIPMENT. THIS MAY INCLUDE CURRENT TRANSFORMERS, OUTDOOR AIR SENSORS, AND MIXED AIR SENSORS. WIRE END DEVICES TO IO FLEX CONTROLLER.

- COORDINATE ROUTING AND FINAL LOCATIONS OF COMMUNICATIONS AND CONTROLS WIRING BETWEEN MECHANICAL, ELECTRICAL AND LOW VOLTAGE CONTRACTOR.
- ALL EXTERIOR AND BELOW CEILING POWER, CONTROLS AND COMMUNICATIONS WIRING TO BE ROUTED IN CONDUIT. INSTALL CONDUIT FOR INTERIOR CONTROL AND COMMUNICATION WIRING ONLY IF REQUIRED BY AHJ.
- BELDEN CABLE NUMBERS ARE SHOWN ON WIRING DIAGRAM FOR CABLE REQUIREMENTS (SHIELDING, PLENUM RATING, AWG, ETC.). CONTRACTOR TO PROVIDE BELDEN CABLE AS SHOWN OR CONTACT BEST WIRE AND CABLE FOR APPROVED ALTERNATE CABLE. CONTACT PATRICK HAMACK AT BEST WIRE AND CABLE (972) 658-9966 FOR QUESTIONS ABOUT CABLE REQUIREMENTS.
- PROVIDE ALL FIELD WIRING BETWEEN HVAC AND REFRIGERATION EQUIPMENT AS SHOWN IN SEIMS 1.0.
- INSTALL BACK BOXES WITH CONDUIT STUB UP FOR COMBO SPACE / HUMIDITY / CO2 SENSOR. DEVICES TO BE PROVIDED BY CARRIER AND AUTOMATED LOGIC CORPORATION (ALC).
- PROVIDE FINAL INSTALLATION AND CONNECTION OF CONTROL WIRING TO LIGHTING CONTROL SYSTEM INCLUDING OVERRIDE SWITCH, HVAC AND REFRIGERATION EQUIPMENT, COMBO SPACE / HUMIDITY / CO2 SENSOR, AND EMS SYSTEM.
- MOUNT AND PROVIDE POWER TO THE MAIN PANEL.
- ESTABLISH COMMUNICATION LINK BETWEEN THE MAIN PANEL AND BUILDING ETHERNET SWITCH.
- CONTACT THE EMS SYSTEM MANUFACTURER AT (866) 390-4275 AND PROVIDE STARTUP OF MAIN PANEL LIGHTING CONTROLS, HVAC AND REFRIGERATION UNITS.

1 EMS FIELD WIRING DIAGRAM  
1/8" = 1'-0"

- KEYNOTES**
- COORDINATE LOCATION WITH MECHANICAL.
  - REFER TO 4EMMS1.0 FOR TLO, HUMIDITY SENSOR AND LIGHTING CONTACTOR WIRING DETAIL. REFER TO 1EMMS1.0 FOR SMART CONTROLLER AND EVAPORATOR WIRING DETAIL.
  - LIGHTING OVERRIDE SWITCH. INSTALL ON BACK WALL ABOVE WORK SURFACE OF WORKSTATION LOCATED IN BACK ROOM.

SYMBOL	DESCRIPTION
TLO	LIGHTING OVERRIDE SWITCH
S	TEMPERATURE SENSOR
S/HVC	COMBO SPACE / HUMIDITY / CO2 SENSOR
-- EC --	PROVIDED BY ELECTRICAL CONTRACTOR
-- MC --	PROVIDED BY MECHANICAL CONTRACTOR
-- EMS --	PROVIDED BY EMS CONTRACTOR

SEAL:

THIS DOCUMENT IS NOT FOR REGULATORY APPROVAL, PERMITTING, OR CONSTRUCTION.

NO DATE REMARKS  
REVISIONS



BID SET  
JUNE 27, 2019

**7-ELEVEN  
STORE #38777**

12060 US 301 N  
PARRISH, FL  
34219

PROJECT NO: 2018.0891  
DATE: FEBRUARY 26, 2019

**EMS1.0**  
ENERGY MANAGEMENT  
SYSTEM

CHECKED: MM DRAWN: AE

Order Plans

WWW.LDILine.com

COPYRIGHT © 2019 INTERPLAN LLC. RESERVE COPYRIGHT & OTHER RIGHTS RESTRICTING THESE DOCUMENTS TO THE ORIGINAL SET OR TAPSCREED WHICH THEY WERE PREPARED. REPRODUCTIONS, CHANGES OR ASSIGNMENTS ARE PROHIBITED.