

ROUTE INSIDE REFRIGERANT LINES TIGHT TO EXTERIOR WALL. REF 11/M3.0 FOR SUPPORT DETAIL.

BEACON II AND EVAPORATORS TO BE CONFIGURED FOR THE INCOMING VOLTAGE.

HVAC NOTES

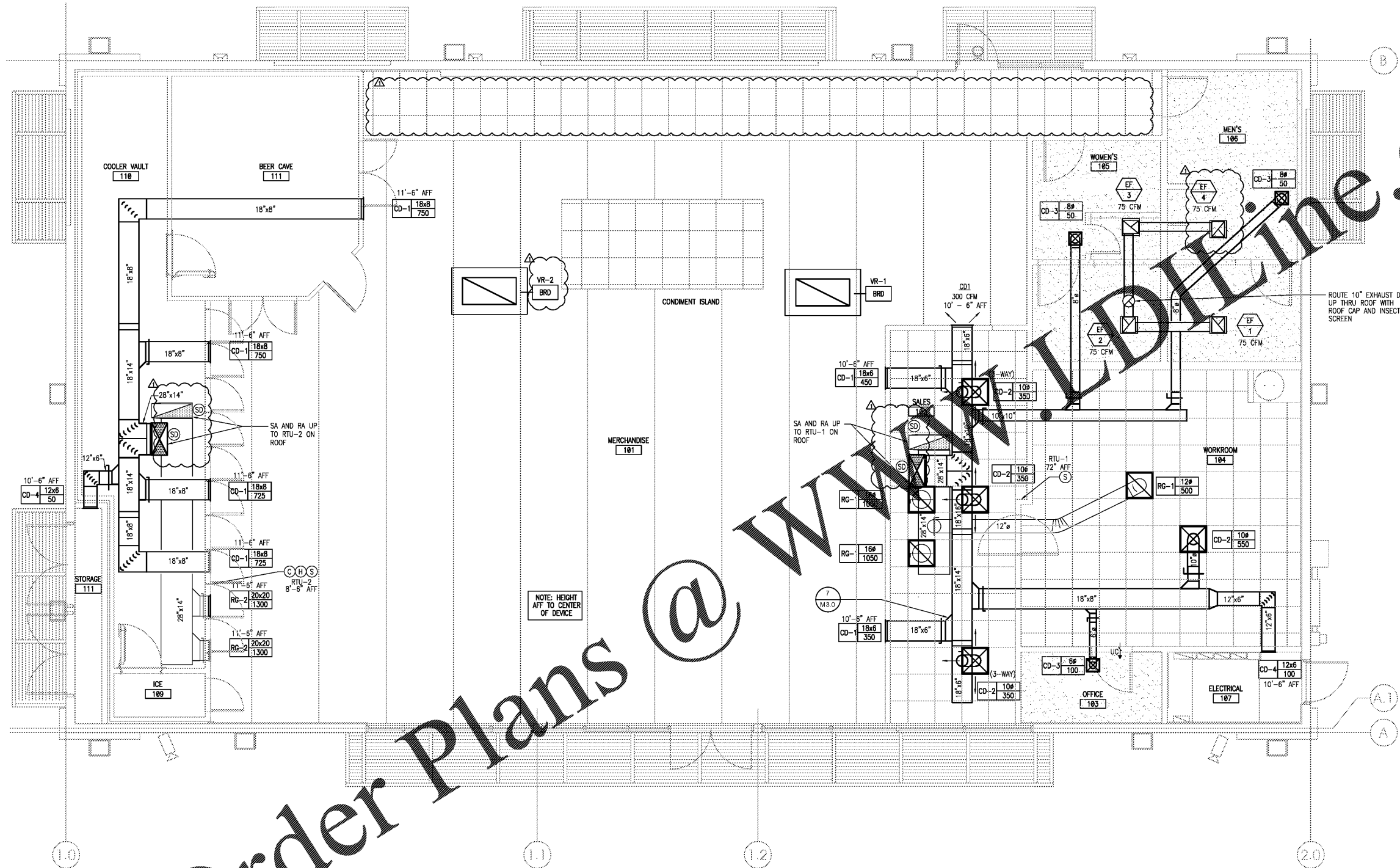
1. NOTES APPLY TO ALL MECHANICAL SHEETS.
2. EACH CONTRACTOR IS RESPONSIBLE FOR HAVING THOROUGH KNOWLEDGE OF ALL DRAWINGS AND SPECIFICATIONS AS THEY RELATE TO THIS WORK. NO ADDITIONAL COMPENSATION SHALL BE ALLOWED DUE TO LACK OF THIS KNOWLEDGE.
3. PROVIDE ALL MATERIALS FOR A COMPLETE INSTALLATION IN ALL RESPECTS READY FOR INTENDED USE AND IN STRICT ACCORDANCE WITH STATE AND LOCAL CODES AND MANUFACTURER'S RECOMMENDATIONS.
4. SPRINKLER HEAD AND LIGHTING FIXTURE LOCATIONS TAKE PRECEDENCE OVER DIFFUSER LOCATIONS. COORDINATE WITH ELECTRICAL CONTRACTOR AND FIRE PROTECTION CONTRACTOR.
5. DUCTWORK IDENTIFICATION AND INSTALLATION TO ADHERE TO GOVERNING CODES.
6. DUCT SIZES INDICATED ARE MINIMUM CLEAR DIMENSIONS AND THE INSIDE EQUIVALENT FREE AREA. REQUIREMENTS MAINTAIN THE AIR FLOW SPECIFIED. IF DUCT LINING IS REQUIRED, INCREASE DUCT SIZE TO MAINTAIN ORIGINAL INSIDE DIMENSIONS. IF DUCT SIZES NEED TO BE INCREASED FOR SPACE REQUIREMENTS, ENSURE THE ORIGINAL INSIDE EQUIVALENT FREE AREA IS MAINTAINED.
7. TYPICAL BRANCH DUCT FITTING DETAIL IS APPLICABLE THROUGHOUT. FLEXIBLE DUCTWORK IS ONLY PERMITTED FOR FINAL CONNECTION - MAX LENGTH OF 6'-0".
8. FURNISH AND INSTALL VOLUME/BALANCE DAMPERS AT ALL BRANCH DUCTS TO DIFFUSERS. LOCATE DAMPERS A MINIMUM 4'-0" AWAY FROM DIFFUSERS. PROVIDE ACCESS AS REQUIRED.
9. ALL CEILING DIFFUSERS ARE 4-WAY PATTERN UNLESS SHOWN OTHERWISE.
10. PROVIDE A COMPLETE TEST AND BALANCE FOR HVAC SYSTEM. AIR BALANCE SHALL BE WITHIN 5% OF SCHEDULED AIRFLOWS. PROVIDE A COPY OF REPORT TO OWNER AND ENGINEER.
11. INSTALL VTR'S AND EXHAUST FANS A MINIMUM OF 10 FT FROM OUTSIDE AIR INTAKE.

REF EMS1.0 SHEET FOR ADDITIONAL INFORMATION REGARDING THE BUILDING ENERGY MANAGEMENT SYSTEM CONTROLS. CONTACT AUTOMATED LOCK (ALC) AT (888) 390-4275 UPON AWARD OF CONTRACT TO OBTAIN LIST OF CERTIFIED EMS INSTALLERS. DURING CONSTRUCTION, AT 2 WEEKS PRIOR TO BUILDING TURNOVER, CONTACT ALC TO COORDINATE DELIVERY OF EMS PANEL. AFTER INSTALLATION OF EMS PANEL INCLUDING CONNECTION OF CABLES, CONTACT ALC FOR START-UP OF EMS PANEL. START-UP TO BE DONE 2-3 DAYS PRIOR TO BUILDING TURNOVER.

COMMISSIONING AND T&B REQUIRED AND A REPORT GENERATED USING 7-ELEVEN'S COMMISSIONING REPORT TEMPLATE. PROVIDE A COPY TO THE OWNER AND ENGINEER. IF HVAC SYSTEM AIRFLOW CANNOT BE BALANCED PER PLANS, CONTACT ENGINEER OF RECORD FOR RESOLUTION.

SEAL:

THIS DOCUMENT IS NOT
FOR REGULATORY
APPROVAL, PERMITTING,
OR CONSTRUCTION.



Order Plans @ www.wdwline.com

MECHANICAL FLOOR PLAN
1/4" = 1'-0"



NO.	DATE	REVISIONS
1	03.18.19	PEER COMMENTS
		NO. DATE REMARKS



BID SET
JUNE 27, 2019

7-ELEVEN
STORE #38777

12060 US 301 N
PARRISH, FL
34219

PROJECT NO: 2018.0891
DATE: FEBRUARY 26, 2019

M1.0
MECHANICAL PLAN

CHECKED: MM DRAWN: AE