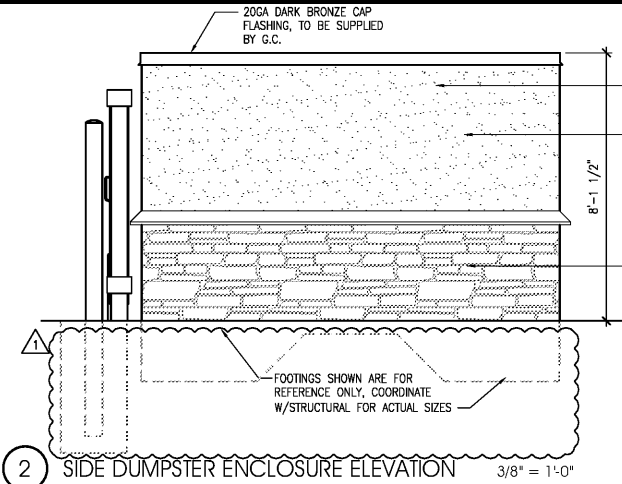
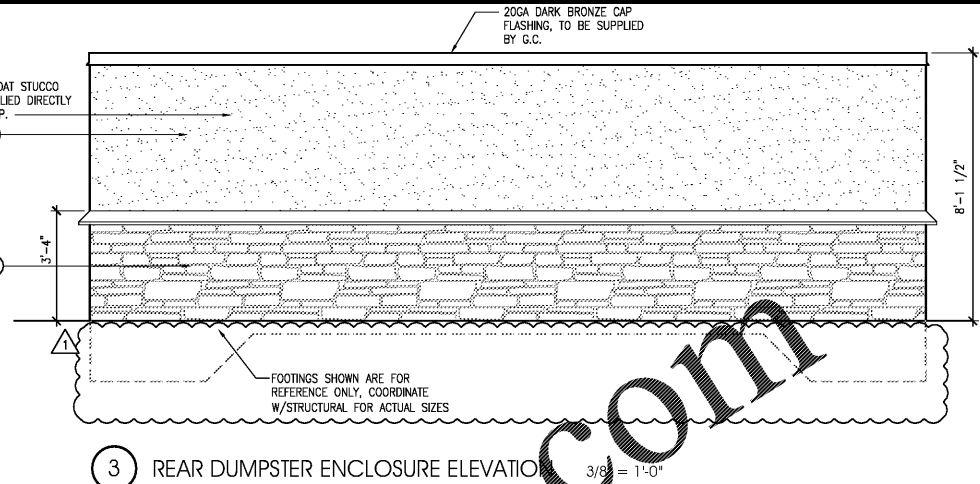


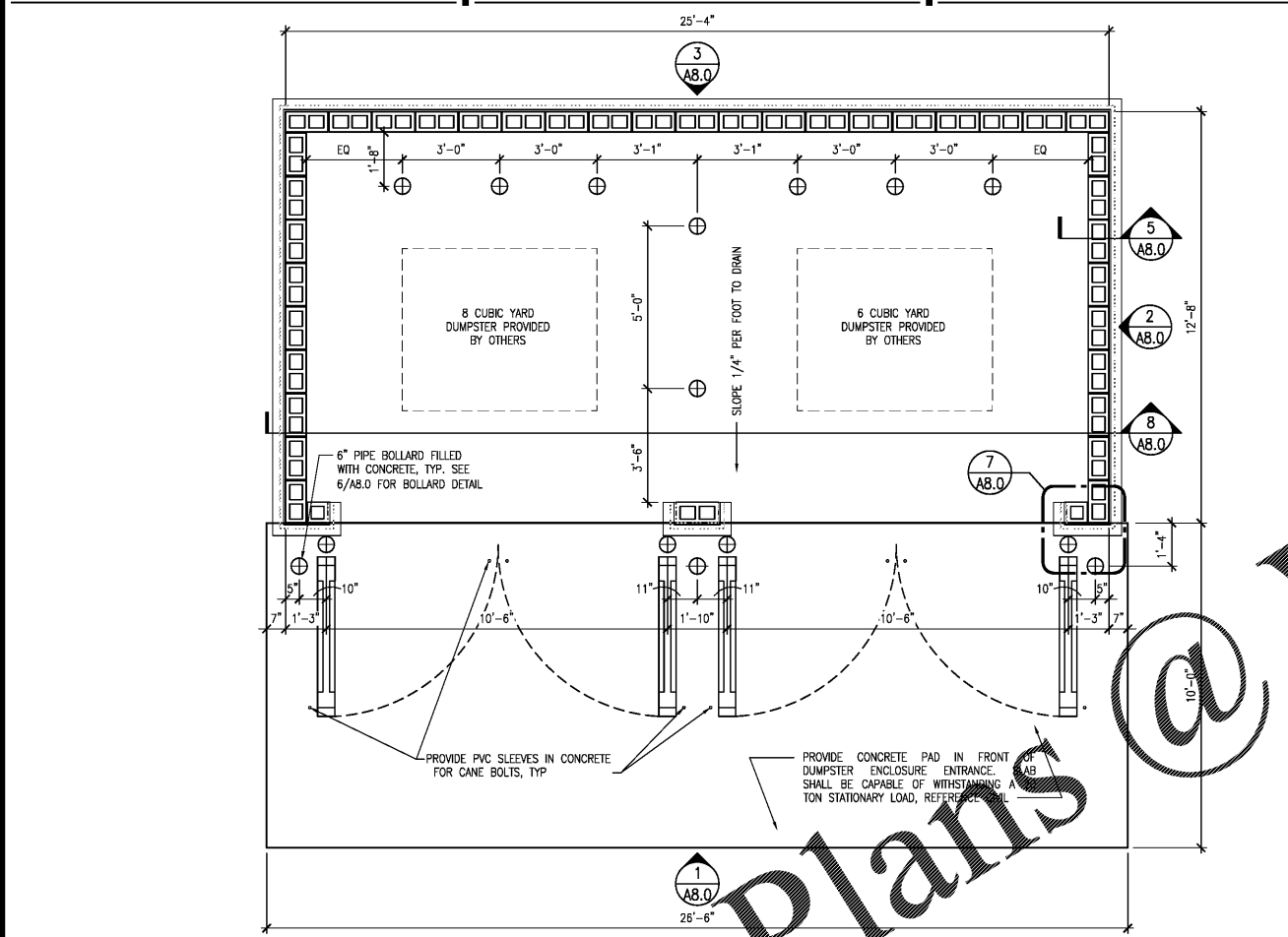
1 FRONT DUMPSTER ENCLOSURE ELEVATION 3/8" = 1'-0"



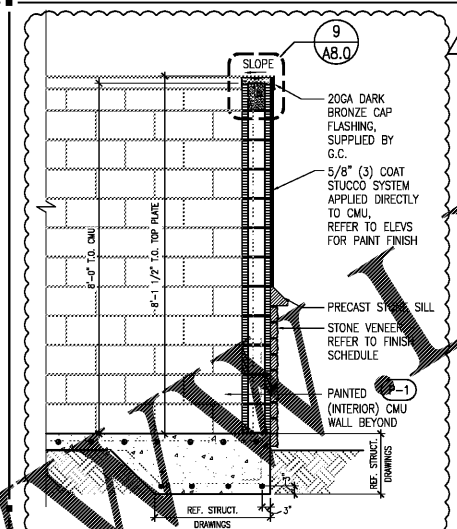
2 SIDE DUMPSTER ENCLOSURE ELEVATION 3/8" = 1'-0"



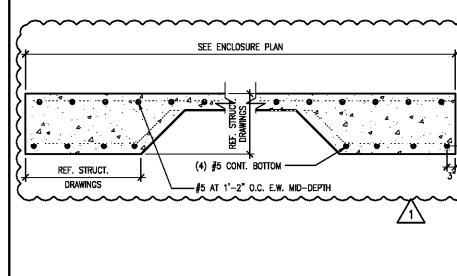
3 REAR DUMPSTER ENCLOSURE ELEVATION 3/8" = 1'-0"



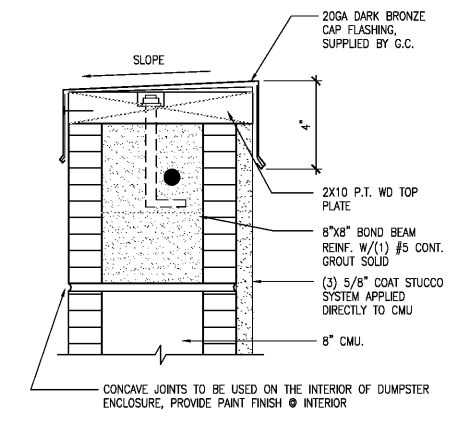
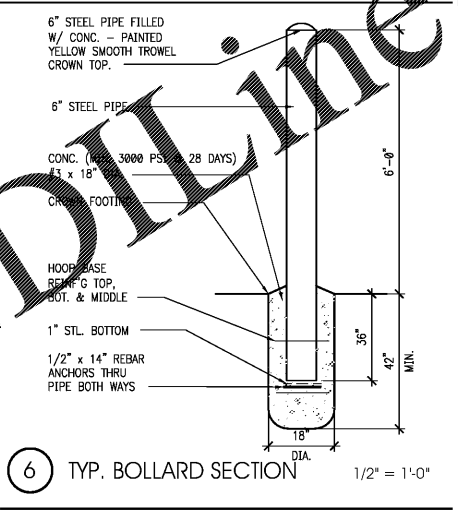
4 DUMPSTER ENCLOSURE PLAN 3/8" = 1'-0"



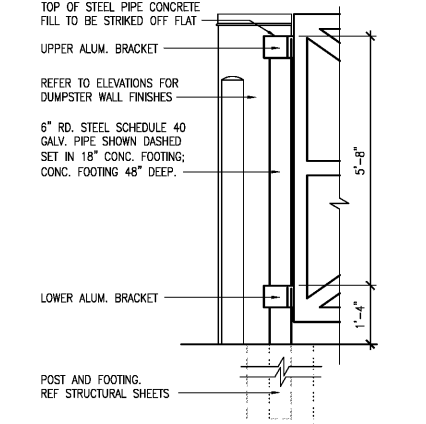
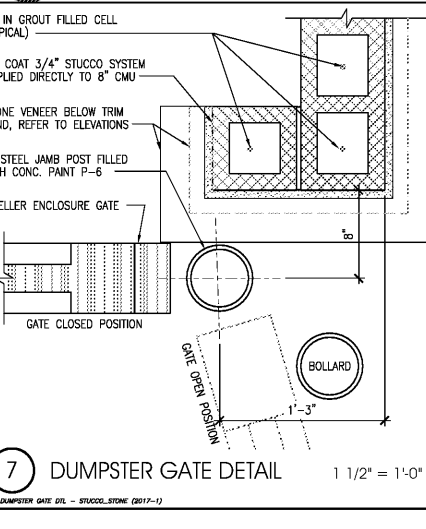
5 DUMPSTER ENCLOSURE WALL SECTION 1/2" = 1'-0"



8 DUMPSTER ENCLOSURE SLAB SECTION 3/8" = 1'-0"



9 CAP FLASHING DETAIL 3" = 1'-0"



10 DUMPSTER GATE BOLLARD DETAIL 1/2" = 1'-0"

CODE / PROJECT DATA

1. APPLICABLE CODE REFERENCE:
2017 FLORIDA BUILDING CODE 6TH EDITION - BUILDING
2017 FLORIDA BUILDING CODE 6TH EDITION - PLUMBING
2017 FLORIDA BUILDING CODE 6TH EDITION - MECHANICAL
2014 NATIONAL ELECTRIC CODE 6TH EDITION - ELECTRICAL
2017 FLORIDA FIRE PREVENTION CODE 6TH EDITION - FIRE/LIFE SAFETY
2015 NFPA 1 & NFPA 101 FL EDITION
ADAAG FLORIDA STATE ACCESSIBILITY CODE - ACCESSIBILITY

3. BUILDING TYPE: RETAIL CONVENIENCE STORE
CONSTRUCTION CLASSIFICATION:
TABLE 503 OF THE 2017 FBCB:
TYPE V-B: UNPROTECTED / UNSPRINKLERED
MAXIMUM AREA ALLOWED = 9000 S.F. PER TABLE 503 OF THE 2017 FBCB.

8. ROOF LOADS
LIVE LOAD: 20 PSF
DEAD LOAD: 25 PSF

9. WIND VELOCITY: 150 (ULT) MPH/ XXX MPH (ASD) WITH 3 SEC. GUST
EXPOSURE CATEGORY: C
RISK CATEGORY: II
INTERNAL PRESSURE COEFFICIENT: 0.18
WIND PRESSURES: SEE STRUCTURAL DWG. SHEET S3.1 FOR MORE INFORMATION.

Order Plans @

Www.Drillline.com

NO.	DATE	REVISIONS
1	03.18.19	PEER COMMENTS
		NO. DATE REMARKS



BID SET
JUNE 27, 2019

**7-ELEVEN
STORE #38777**

12060 US 301 N
PARRISH, FL
34219

PROJECT NO: 2018.0891
DATE: FEBRUARY 26, 2019

A8.0

DUMPSTER ENCLOSURE
PLAN, SECTIONS AND
DETAILS
CHECKED: RW DRAWN: JUM

COPYRIGHT © 2019 INTERPLAN LLC. RESERVE RIGHTS RESTRICTING THESE DOCUMENTS TO THE ORIGINAL USER OR REPRODUCING OR ASSIGNING ARE PROHIBITED.