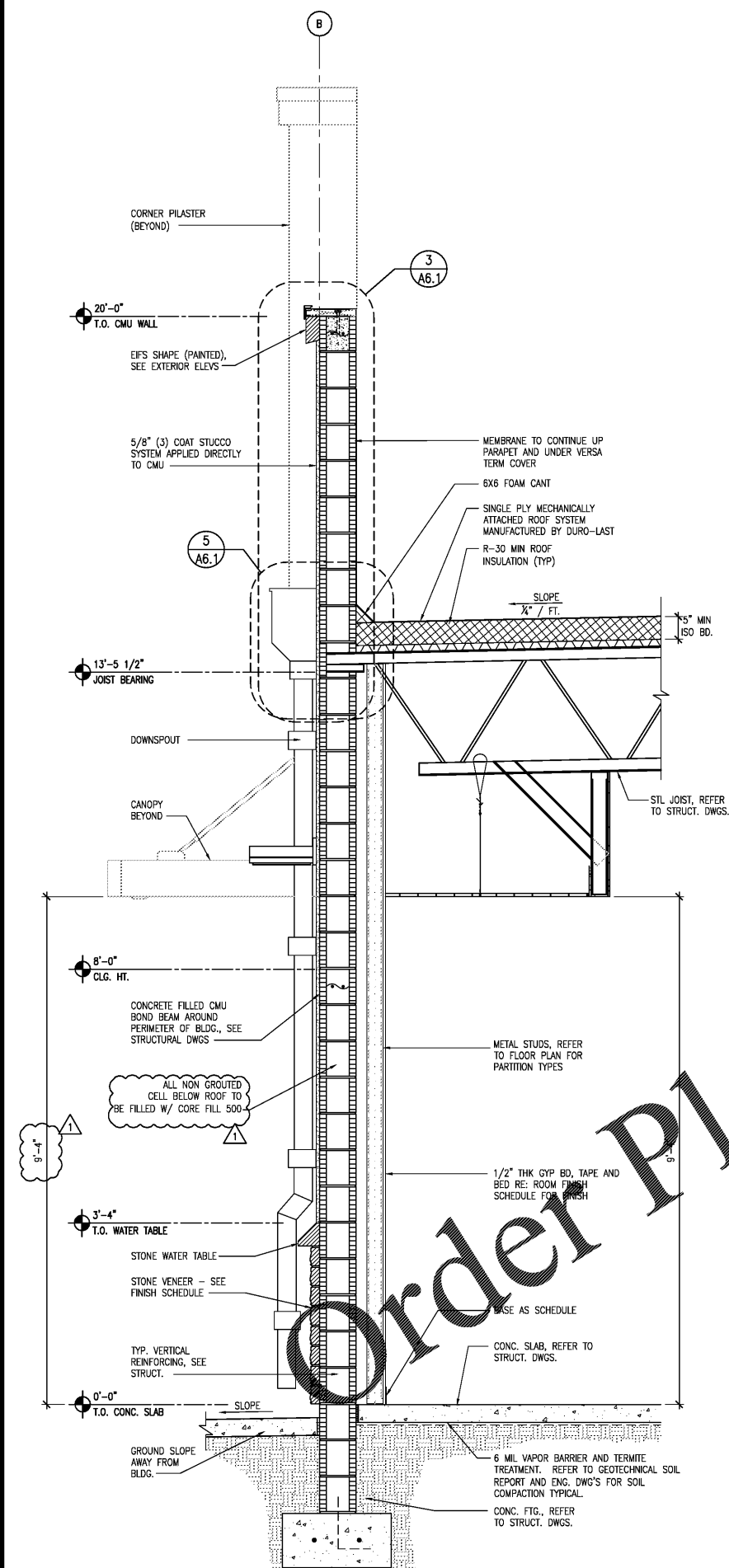
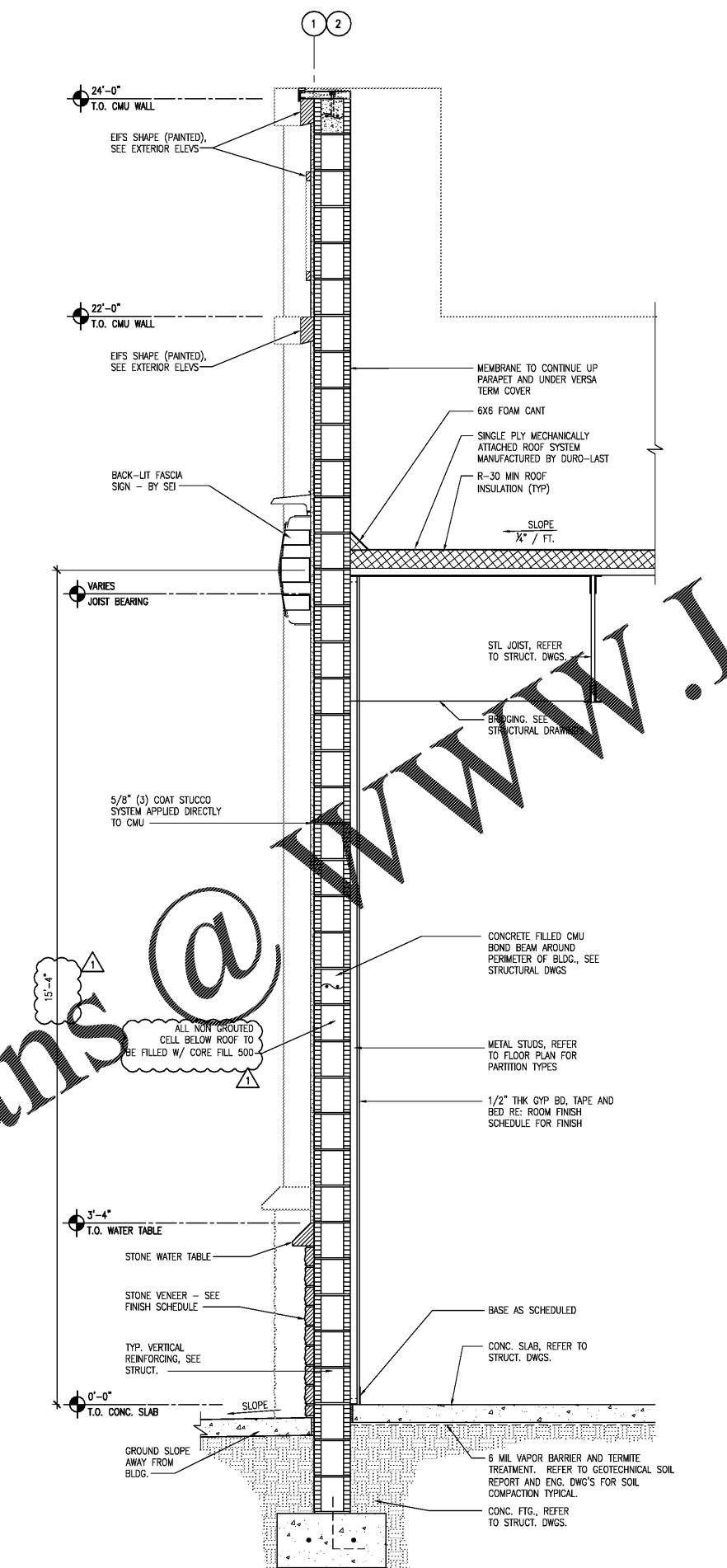


SEAL:

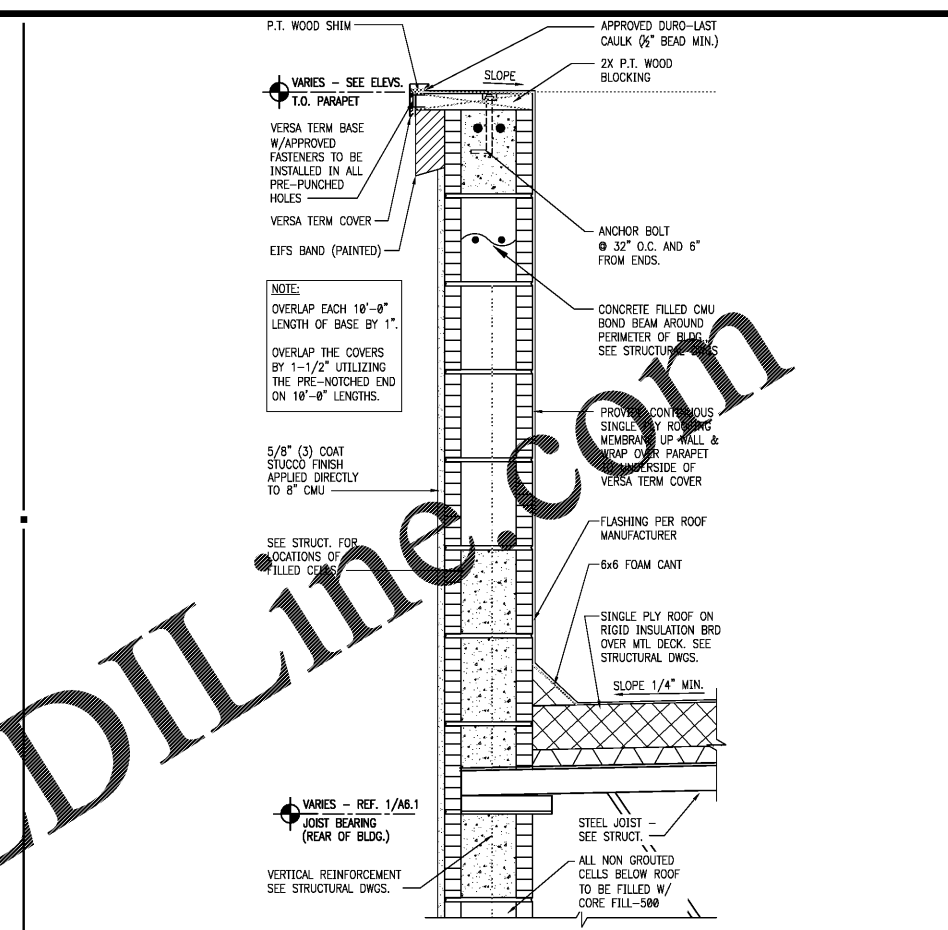
THIS DOCUMENT IS NOT
FOR REGULATORY
APPROVAL, PERMITTING,
OR CONSTRUCTION.



1 WALL SECTION 3/4" = 1'-0"



2 WALL SECTION 3/4" = 1'-0"

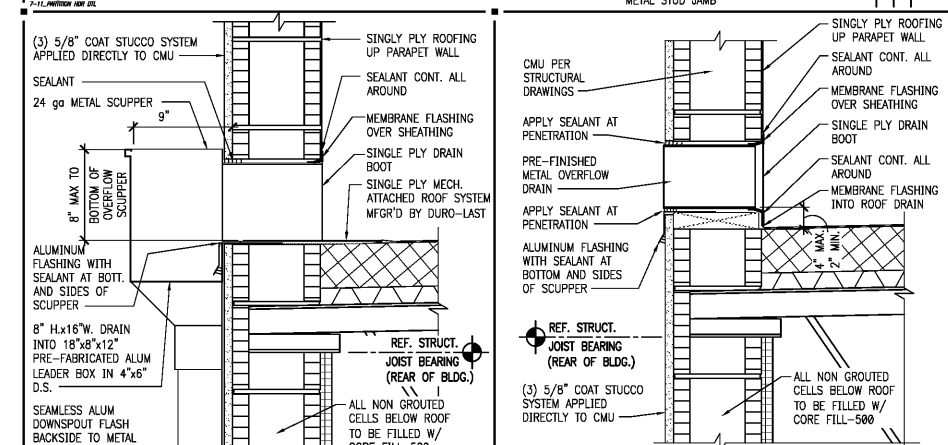


3 CMU PARAPET DETAIL 1 1/2" = 1'-0"

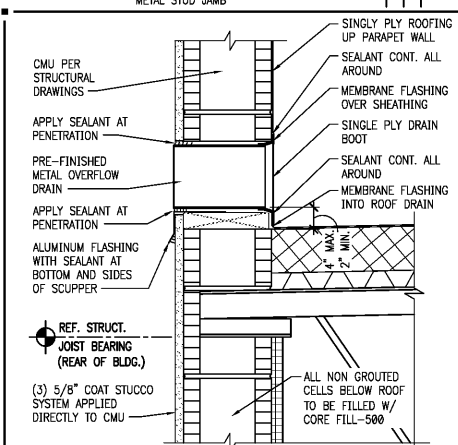
INTERIOR NON-LOAD BEARING PARTITION HEADER SCHEDULE

HEADER LENGTH	HEADER MEMBERS	MINIMUM EFFECTIVE PROPERTIES PER STUD
2' TO 6'	(2) 6" x 18 GAUGE	lx = 2.042 Sx = 0.670
6' TO 8'	(2) 6" x 16 GAUGE	lx = 2.518 Sx = 0.839
8' TO 10'	(2) 6" x 14 GAUGE	lx = 3.094 Sx = 1.031
10' TO 12'	(2) 8" x 18 GAUGE	lx = 4.134 Sx = 1.033
12' TO 14'	(2) 8" x 16 GAUGE	lx = 5.110 Sx = 1.277
14' TO 16'	(2) 8" x 14 GAUGE	lx = 6.303 Sx = 1.576
16' TO 18'	(2) 10" x 14 GAUGE	lx = 12.325 Sx = 2.456
18' TO 26'	(2) 12" x 16 GAUGE	lx = 15.730 Sx = 2.334

4 SECTION B DETAIL - HEADER 1 1/2" = 1'-0"



5 SCUPPER DETAIL 1 1/2" = 1'-0"



6 OVERFLOW DETAIL 1 1/2" = 1'-0"

Order Plans @

WWW.LDILine.com

1 03.18.19 PEER COMMENTS
NO. DATE REMARKS



BID SET
JUNE 27, 2019
**7-ELEVEN
STORE #38777**
12060 US 301 N
PARRISH, FL
34219

PROJECT NO: 2018.0891
DATE: FEBRUARY 26, 2019

A6.1
WALL SECTIONS AND
DETAILS

CHECKED: RW DRAWN: JUM

COPYRIGHT © 2019 INTERPLAN LLC. REPRODUCE OR TRANSMIT IN ANY FORM OR BY ANY MEANS, WITHOUT PERMISSION IN WRITING FROM INTERPLAN LLC. ALL RIGHTS RESERVED. THIS DOCUMENT IS THE PROPERTY OF INTERPLAN LLC AND IS TO BE USED ONLY FOR THE PROJECT AND SITE SPECIFICALLY IDENTIFIED HEREIN. REPRODUCTIONS, CHANGES OR ASSIGNMENTS ARE PROHIBITED.