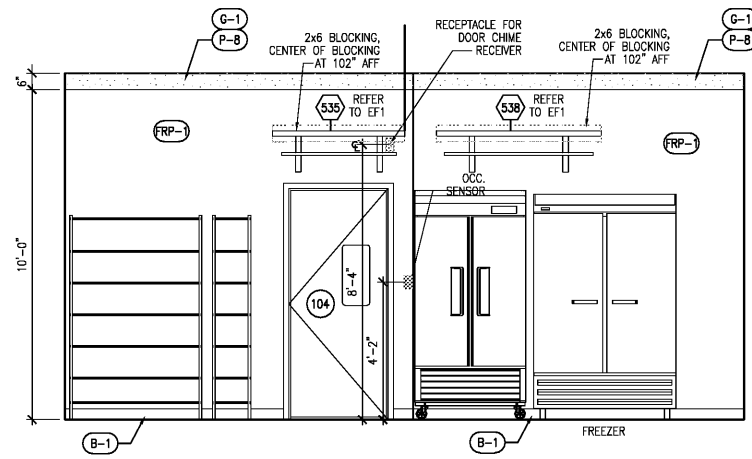


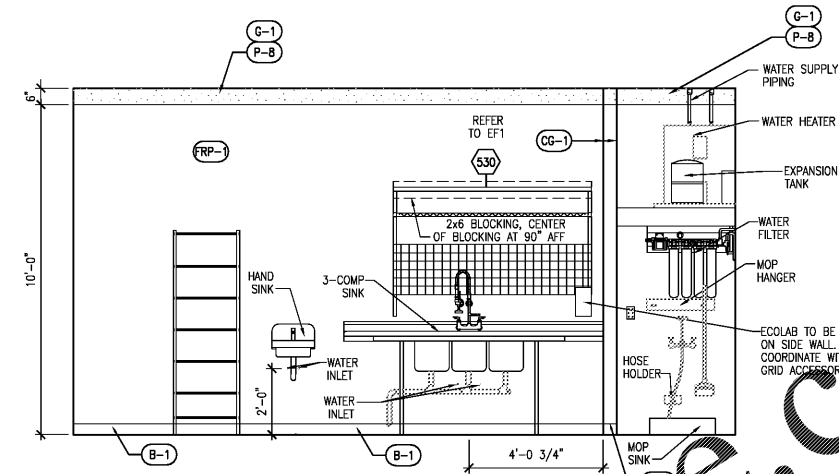
SEAL:

THIS DOCUMENT IS NOT
FOR REGULATORY
APPROVAL, PERMITTING,
OR CONSTRUCTION.



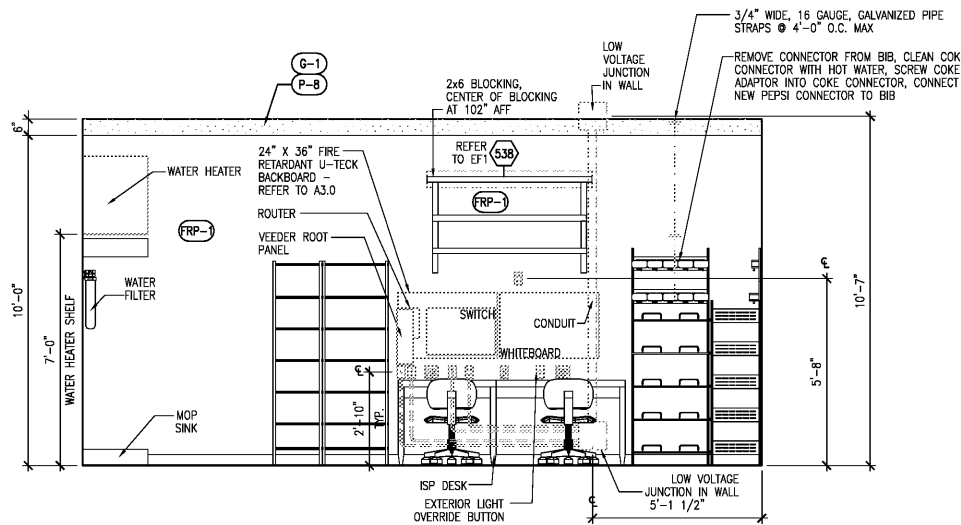
1 INTERIOR ELEVATION - WORK ROOM

3/8" = 1'-0"



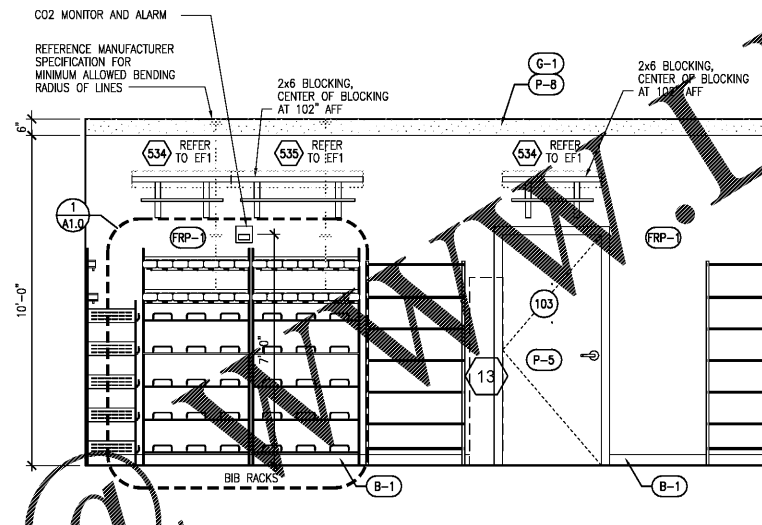
2 INTERIOR ELEVATION - WORK ROOM

3/8" = 1'-0"



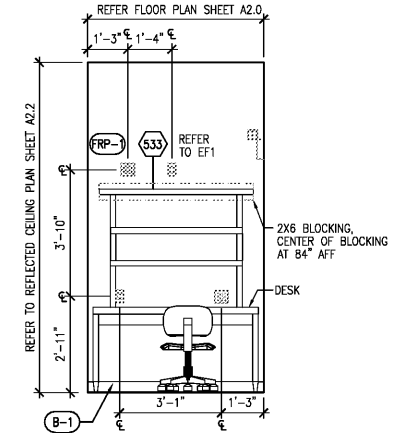
3 INTERIOR ELEVATION - WORK ROOM

3/8" = 1'-0"



4 INTERIOR ELEVATION - WORK ROOM

3/8" = 1'-0"

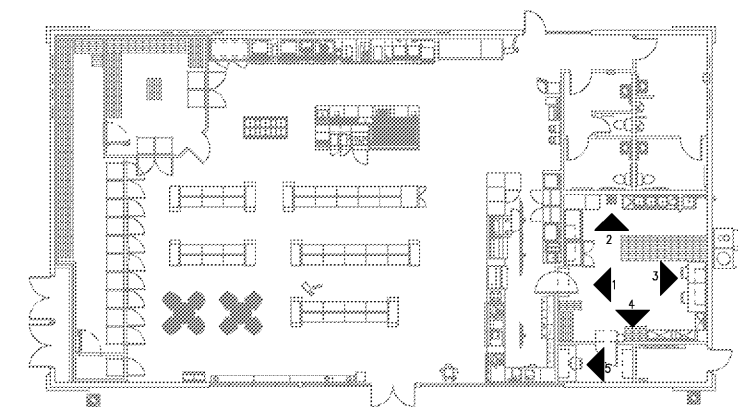


5 INTERIOR ELEVATION - OFFICE

3/8" = 1'-0"

GENERAL NOTES

- A. REFERENCE SHEET A3.0 FOR ALL FINISH SCHEDULE.
- B. REFERENCE ELECTRICAL SHEETS FOR RECEPTACLES LOCATIONS AND HEIGHTS.
- C. ALL COUNTER SHALL BE 34" AFF UNLESS OTHERWISE NOTED.



KEY PLAN

NTS

Order Plans @

WWW.LDILine.com

NO.	DATE	REMARKS



BID SET
JUNE 27, 2019

7-ELEVEN
STORE #38777

12060 US 301 N
PARRISH, FL
34219

PROJECT NO: 2018.0891
DATE: FEBRUARY 26, 2019

A5.3
INTERIOR ELEVATIONS

CHECKED: RW DRAWN: JUM