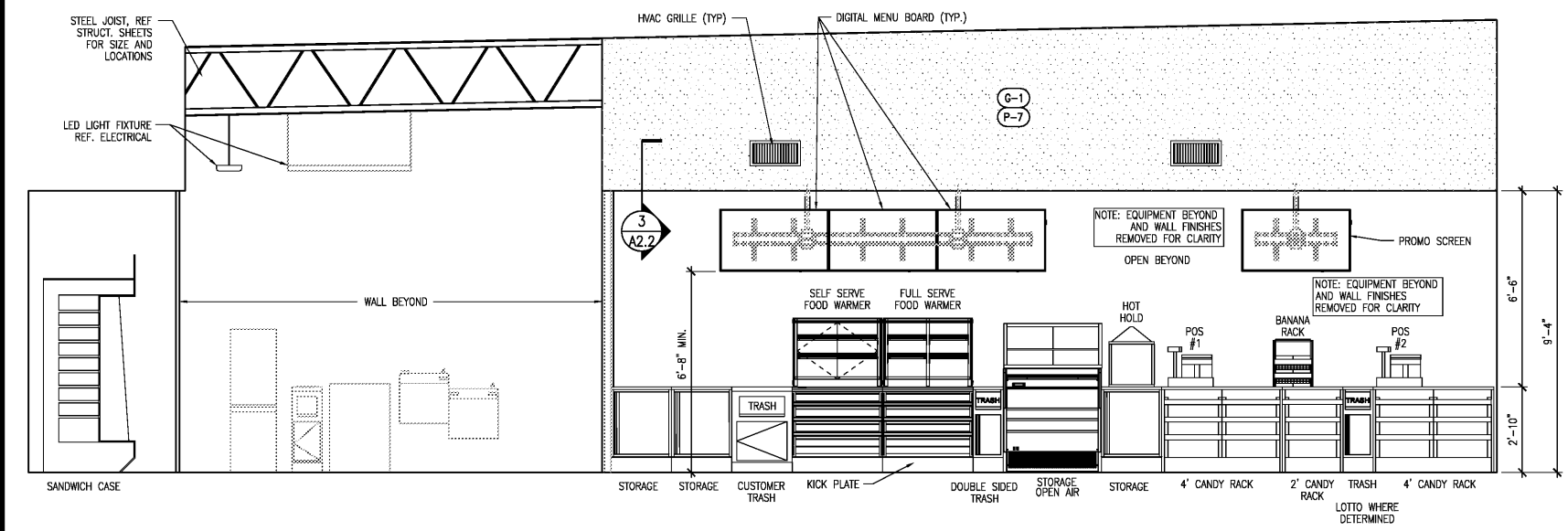
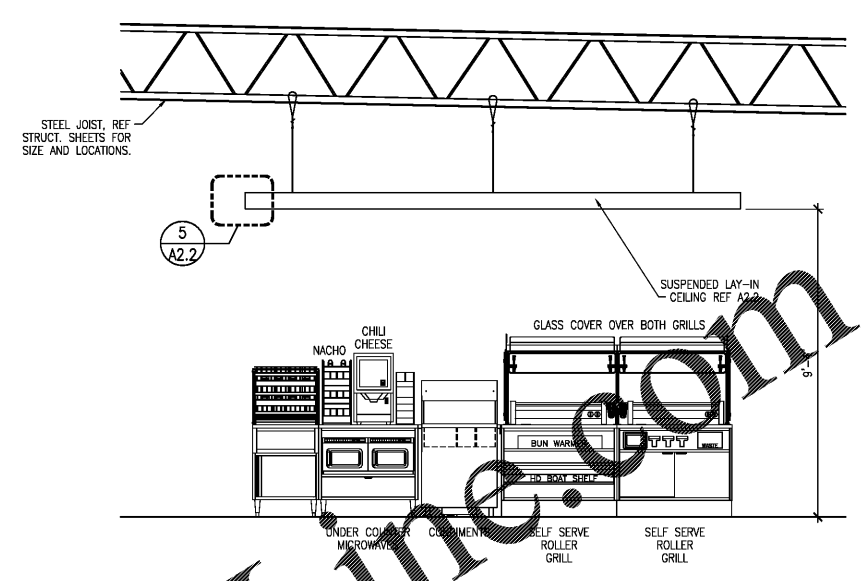


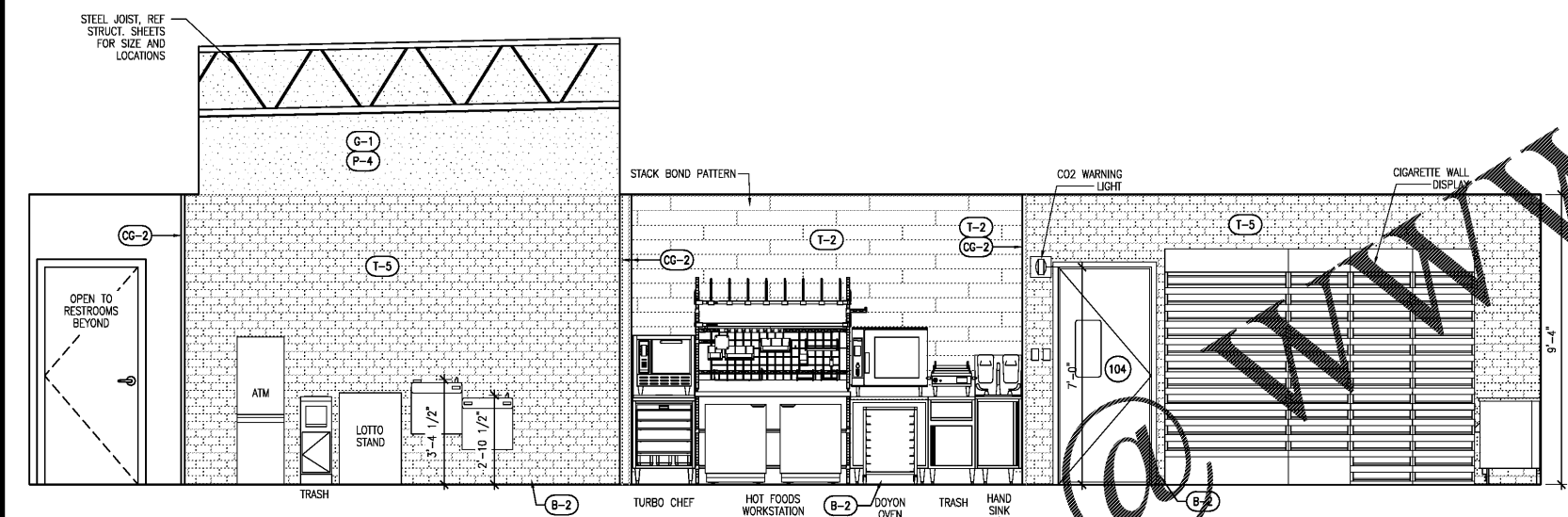
SEAL:  
 THIS DOCUMENT IS NOT  
 FOR REGULATORY  
 APPROVAL, PERMITTING,  
 OR CONSTRUCTION.



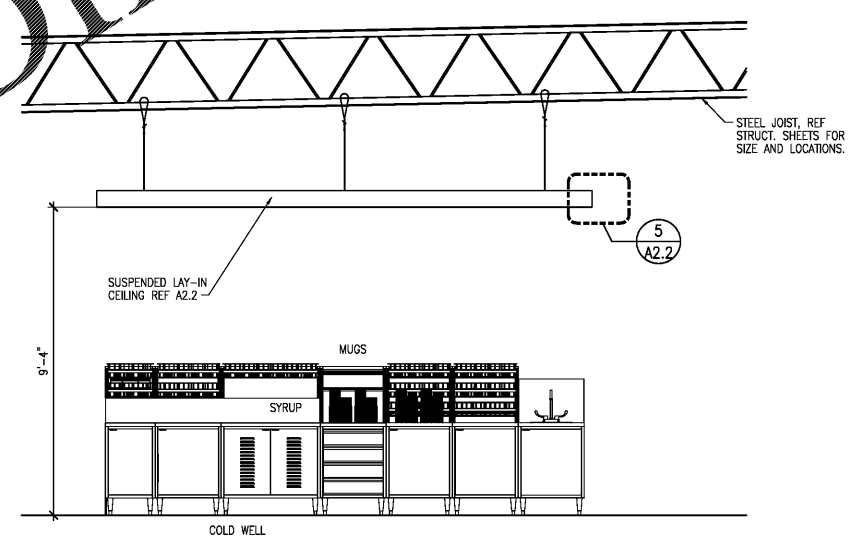
1 INTERIOR ELEVATION - SALES COUNTER 3/8" = 1'-0"



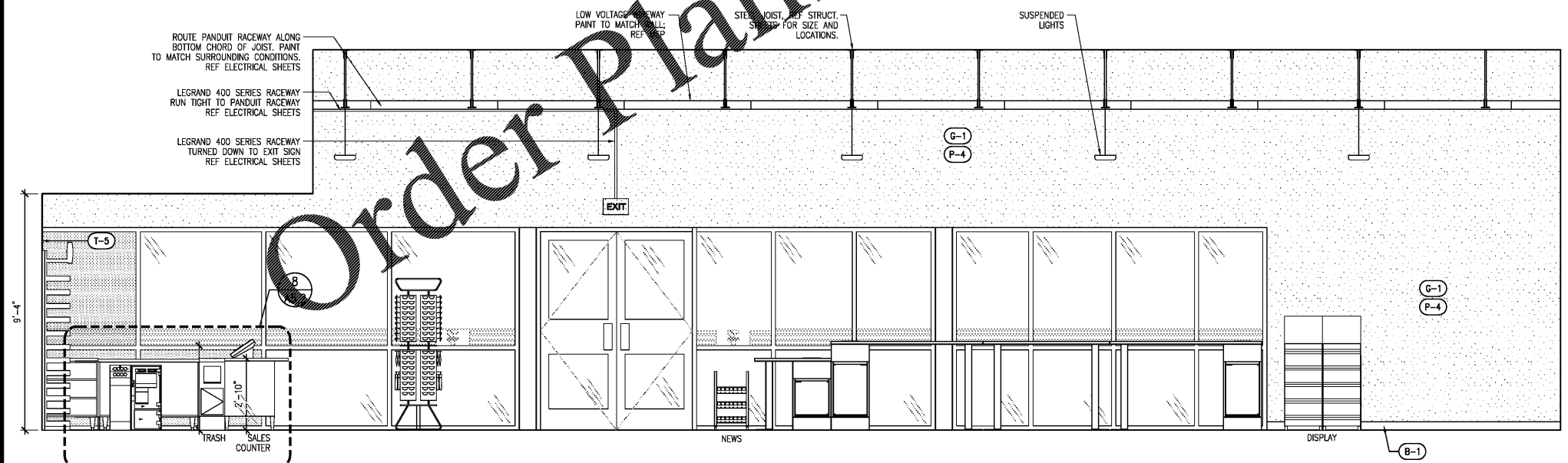
2 INTERIOR ELEVATION - ISLAND 3/8" = 1'-0"



3 INTERIOR ELEVATIONS - SALES 3/8" = 1'-0"



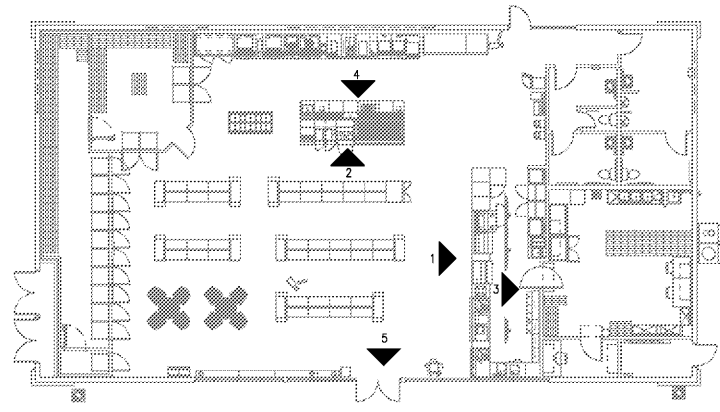
4 INTERIOR ELEVATION - ISLAND 3/8" = 1'-0"



5 INTERIOR ELEVATION - FRONT ENTRY 3/8" = 1'-0"

**GENERAL NOTES**

- A. REFERENCE SHEET A3.0 FOR ALL FINISH SCHEDULE.
- B. REFERENCE ELECTRICAL SHEETS FOR RECEPTACLES LOCATIONS AND HEIGHTS.
- C. ALL COUNTER SHALL BE 34" AFF UNLESS OTHERWISE NOTED.



KEY PLAN

NTS

NO.	DATE	REMARKS



BID SET  
 JUNE 27, 2019  
**7-ELEVEN**  
**STORE #38777**  
 12060 US 301 N  
 PARRISH, FL  
 34219

PROJECT NO: 2018.0891  
 DATE: FEBRUARY 26, 2019

**A5.1**  
 INTERIOR ELEVATIONS

CHECKED: RW DRAWN: JUM

COPYRIGHT © 2019 INTERPLAN LLC. RESERVE RIGHTS RESTRICTING THE DOCUMENT TO THE ORIGINAL BE OR THEREOF FOR WHICH THEY WERE PREPARED. REPRODUCTIONS, CHANGES OR ASSIGNMENTS ARE PROHIBITED.