

SEAL:

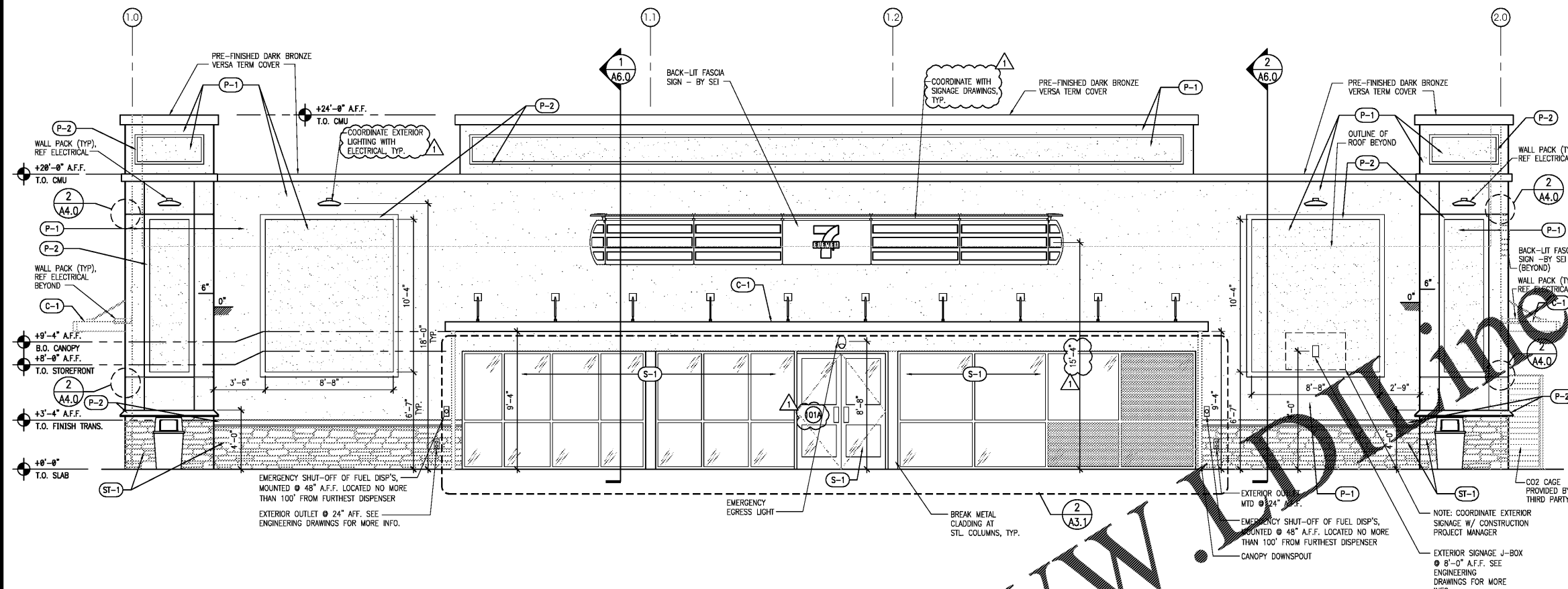
**THIS DOCUMENT IS NOT
FOR REGULATORY
APPROVAL, PERMITTING,
OR CONSTRUCTION.**

GENERAL NOTES

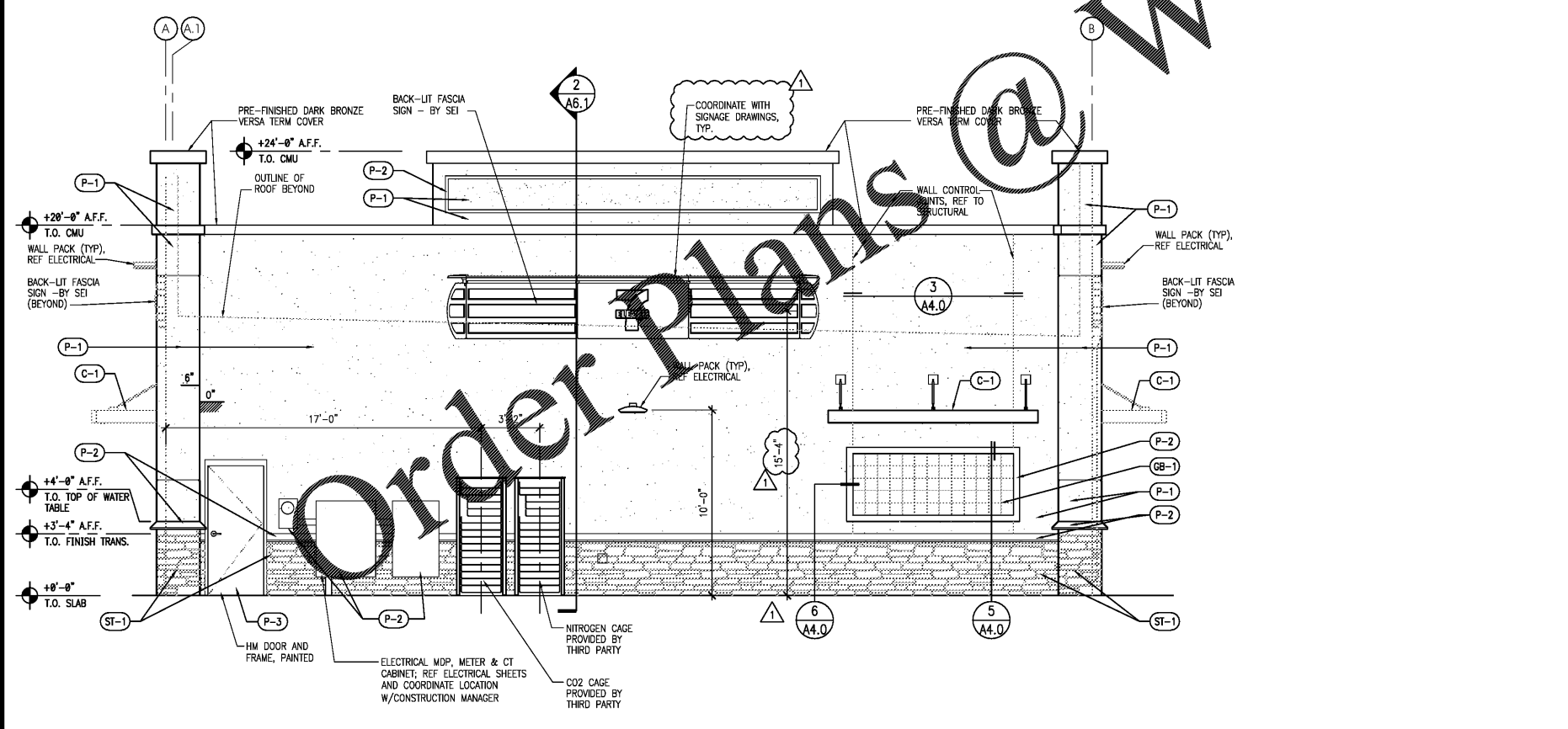
- A. COORDINATE EXTERIOR SIGNAGE WITH CONSTRUCTION PROJECT MANAGER.
- B. REFER TO MATERIAL SCHEDULE ON A3.0 FOR MORE INFORMATION.
- C. EXTERIOR AWNINGS UNDER SEPARATE PERMIT.

www.drawing.com

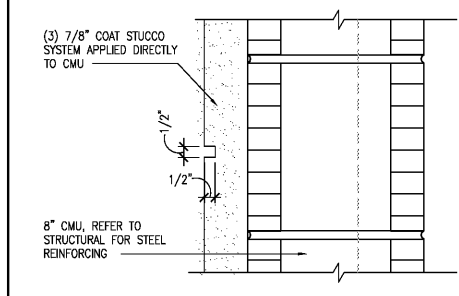
EXTERIOR MATERIALS SCHEDULE		
NO.	MATERIAL	MANUF.-COLOR
MR-1	MEMBRANE ROOFING	DUROLAST - WHITE
P-1	ABOVE WATER TABLE (ABOVE 3'-4")	SHERWIN WILLIAMS - AESTHETIC WHITE SW7035
P-2	WATER TABLE AND BELOW (3'-4" AND BELOW)	SHERWIN WILLIAMS - BALANCED BEIGE SW7037
P-3	EXTERIOR HM DOORS, FRAMES, TRASH ENCLOSURE GATE, GRAVEL GAUGES, AND LIGHT POLES	SHERWIN WILLIAMS - SEAL SKIN SW7675
P-6	EXTERIOR BOLLARDS	SHERWIN WILLIAMS - SEAL SKIN SW7675
P-9	PIPING, ROOF CAPS	SHERWIN WILLIAMS - SEAL SKIN SW7675
S-1	ALUMINUM STOREFRONT GLAZING	KAWNEER 1R350/1R501
C-1	PREFINISHED ALUMINUM CANOPY	MAPES LUMSHADE CANOPY - BRONZE BAKED ENAMEL W/ REAR GUTTER CONNECTIONS
ST-1	STACK STONE	BORAL-COUNTY LEDGE STONE - ASPEN
GB-1	8"x8"x4" GLASS BLOCK	CLEAR BLOCK, NO PATTERN



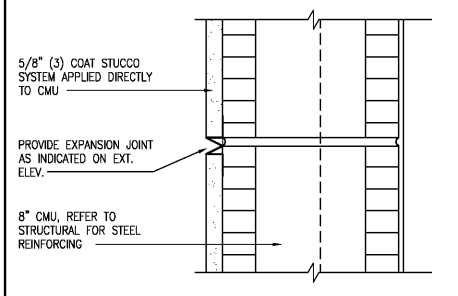
1 EXTERIOR ELEVATION - FRONT 1/4" = 1'-0"



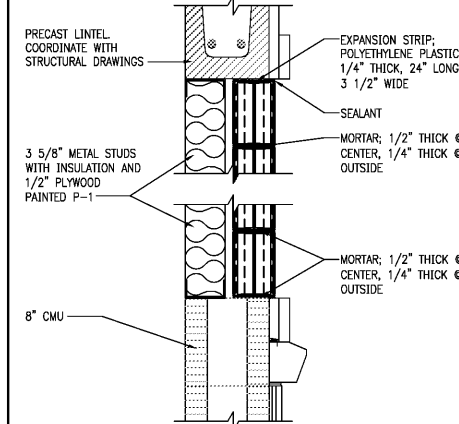
2 EXTERIOR ELEVATION - RIGHT SIDE 1/4" = 1'-0"



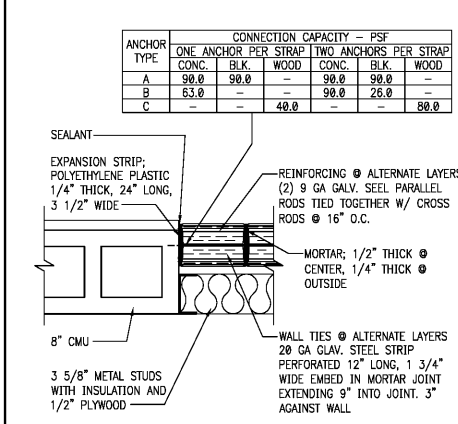
2 WALL REVEAL DETAIL 1" = 1'-0"



3 EXPANSION JOINT DETAIL 1" = 1'-0"



5 GLASS BLOCK SECTION 1" = 1'-0"



6 GLASS BLOCK SECTION 1" = 1'-0"

NO.	DATE	REVISIONS
1	03.18.19	PEER COMMENTS



BID SET
JUNE 27, 2019

**7-ELEVEN
STORE #38777**

12060 US 301 N
PARRISH, FL
34219

PROJECT NO: 2018.0891
DATE: FEBRUARY 26, 2019

A4.0
EXTERIOR ELEVATIONS

CHECKED: RW DRAWN: JUM

COPYRIGHT © 2019 INTERPLAN LLC. RESERVE COPYRIGHT & OTHER RIGHTS RESTRICTING THE DOCUMENT TO THE ORIGINAL USE OR REPRODUCTION OF WHICH THEY WERE PREPARED. REPRODUCTIONS, CHANGES OR ASSIGNMENTS ARE PROHIBITED.