

GENERAL NOTES

- A. ALL INTERIOR FINISHES TO BE CLASS 2 OR BETTER.
- B. CONTRACTOR TO FLOAT AND SCRAPE FLOOR TO BE LEVEL AND PREPARE FOR NEW SCHEDULED FINISH.
- C. CONTRACTOR TO RESERVE SPECIFIED FLOORING AND BASE UPON BEING AWARDED THE BID TO ENSURE AVAILABILITY AND TIMELY INSTALLATION. SUBSTITUTIONS ARE NOT PERMITTED.
- D. FLOORS IN WET AREAS TO SLOPE TO DRAINS 1/8" PER FOOT, TYP.
- E. PROVIDE A BEAD OF CAULK AT INTERIOR CONDITIONS PER OWNER DIRECTION AND PROJECT NEEDS. CAULK IS TO MATCH COLOR OF ADJACENT MATERIAL.
- F. REFERENCE INTERIOR ELEVATIONS FOR WALL FINISHES.
- G. REFERENCE SHEET A3.0 FOR BASE TYPES & SPECS.
- H. PROTECT SURROUNDING AREAS AND SURFACES FROM DUST, CONTACT WITH OVERSPRAY FROM DENSIFYING, PROTECTIVE SURFACE TREATMENT, & JOINT FILLER. CLEAN SURFACES FROM DUST, GREASE, OIL GREASE, CURING AGENTS, AND OTHER SURFACE CONTAMINANTS THAT MAY ADVERSELY AFFECT INSTALLATION OF POLISHED CONCRETE.
- I. REFERENCE SPECIFICATION SECTIONS 033000 CAST-IN-PLACE CONCRETE AND 035336 POLISHED CONCRETE FLOOR FINISH DATED 02-26-2018, REVISED BY 7-ELLEN, FOR ALL NEW INTERIOR CONCRETE FLOORS.

KEY NOTES

- 1. CONCRETE SLAB TO BE GROUND, SEALED, AND POLISHED WHERE INDICATED ON FINISH PLAN - REF. A3.0 FOR MATERIALS SCHEDULE. CONTROL JOINTS TO BE PROVIDED IN CONCRETE PER PLAN - REF. STRUCTURAL.
- 2. METAL THRESHOLD TO BE SET IN FULL BED OF MASTIC - SEE 15/A7.0 AND 10/A7.0.
- 3. FLOOR SINK/DRAIN PER PLAN, REF. DETAILS ON THIS SHEET & PLUMBING DRAWINGS FOR LOCATION.
- 4. TEXTURED PORTION OF RAMP INDICATES DETECTABLE WARNING: ARMOR TILE TACTILE SURFACE, BRICK RED, SIZE AND PATTERN SUBJECT TO LOCAL AND STATE REQUIREMENTS; REF. CIVIL SHEETS.
- 5. REFER TO CIVIL DRAWINGS FOR EXACT REQUIREMENTS FOR RAMP, STRIPING AND TACTILE SURFACE LAYOUT.
- 6. IF SIDEWALK DEPTH IS BETWEEN 6'-0" AND 8'-0" IN FRONT OF EQUIPMENT, CURBSTOPS OR BOLLARDS MUST BE PROVIDED ON PARKING SPACE SIDE OF CURB. TYP.
- 7. CONTROL/CONSTRUCTION JOINTS - SEE STRUCTURAL DWGS.

FLOOR FINISH LEGEND

- SEAL (SC-) = SEaled CONCRETE (SC-), RE: A3.0 FOR FINISH SCHEDULE
- (SC-1) = GRIND, SEAL AND POLISH CONCRETE
- (SC-2) = ONLY GRIND AND SEAL CONCRETE
- (SC-3) = ONLY SEAL CONCRETE

- FLOOR SINK
- FLOOR DRAIN
- FLOOR CLEAN-OUT
- SANITARY FLOOR DRAIN

NO DATE REMARKS
REVISIONS



BID SET
JUNE 27, 2019

**7-ELEVEN
STORE #38777**

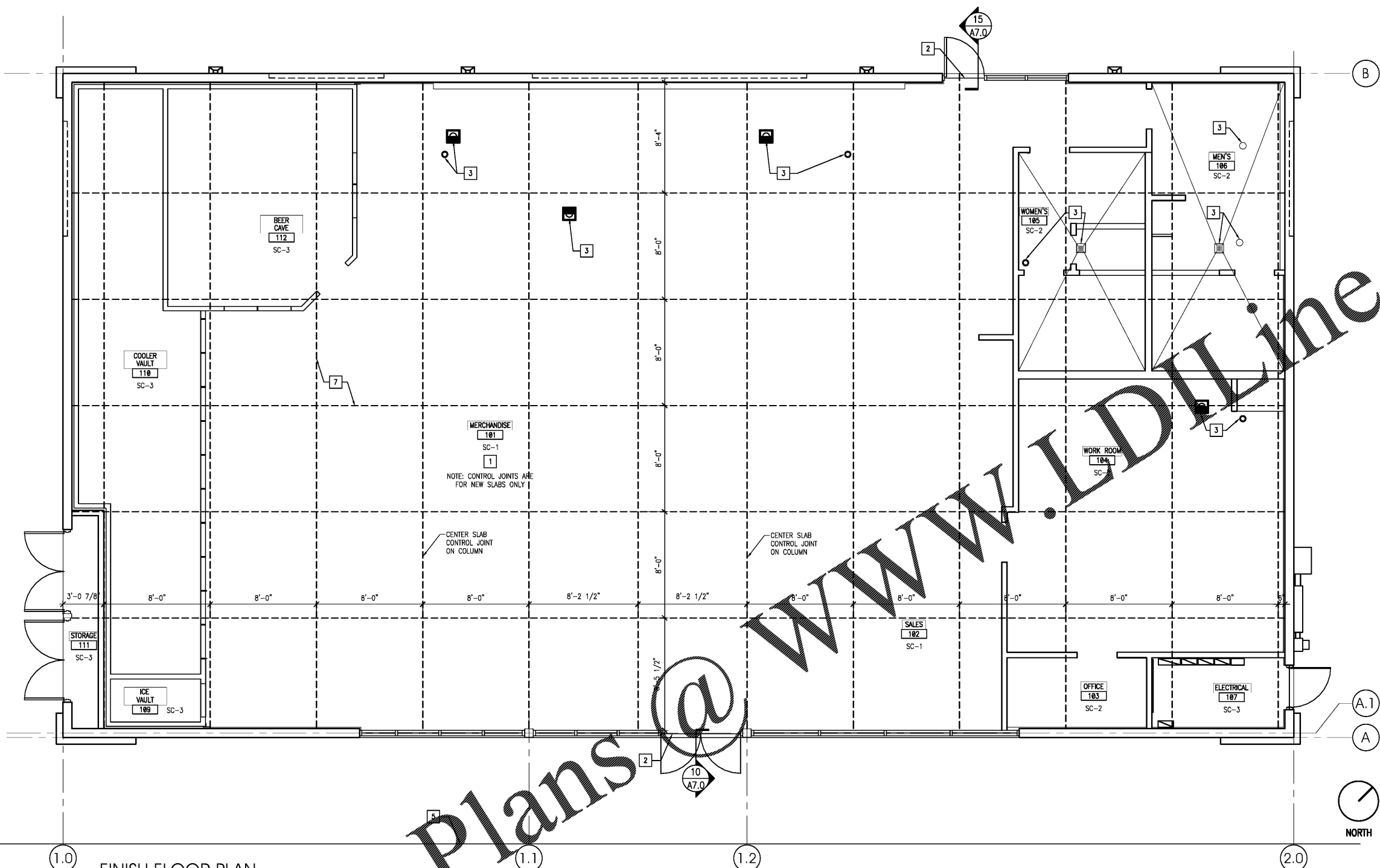
12060 US 301 N
PARRISH, FL
34219

PROJECT NO: 2018.0891
DATE: FEBRUARY 26, 2019

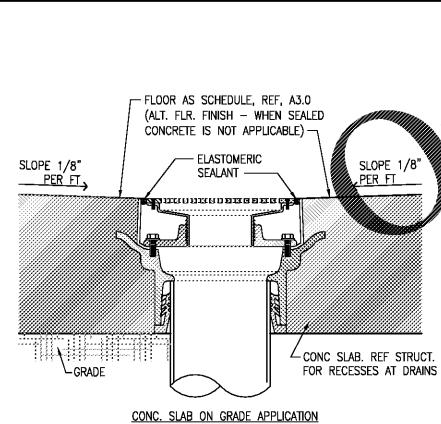
A2.4

FINISH FLOOR PLAN

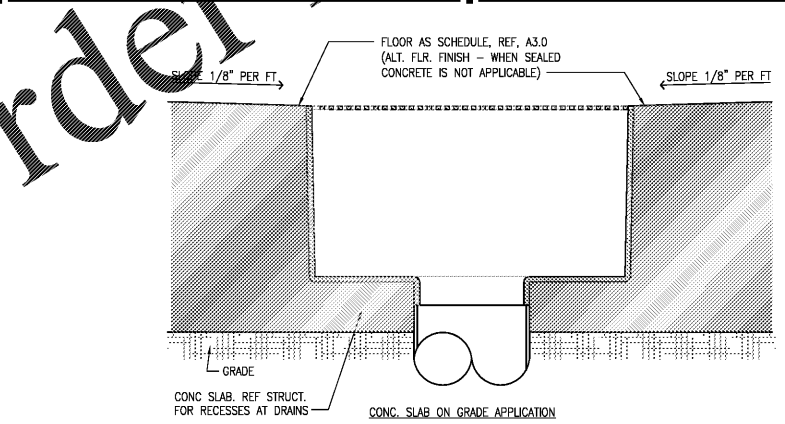
CHECKED: RW DRAWN: JUM



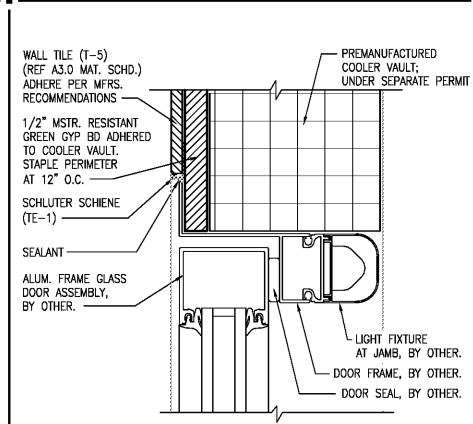
FINISH FLOOR PLAN



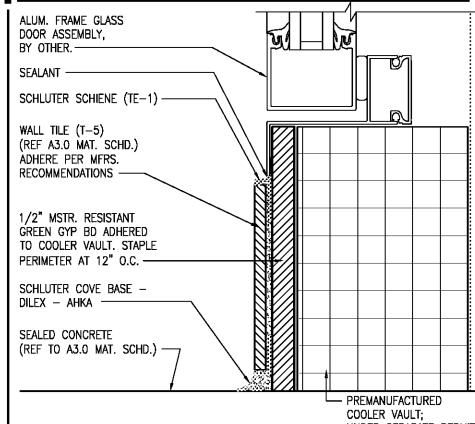
1 FLOOR DRAIN DETAIL
3" = 1'-0"



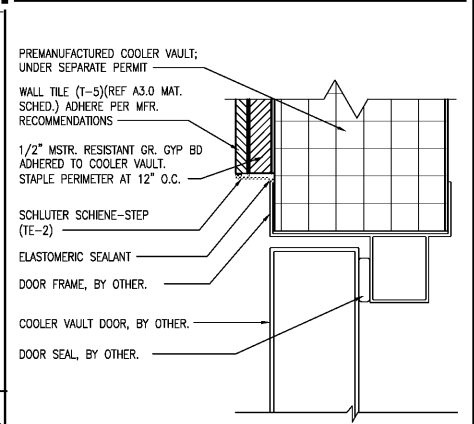
2 FLOOR SINK DETAIL (FLUSH)
3" = 1'-0"



**3 TILE/COOLER MERCHANDISE DOOR
TRANSITION HEAD/JAMB DETL.**
NTS



**4 TILE/COOLER MERCHANDISE DOOR
TRANSITION BASE DETL.**
NTS



**5 TILE/COOLER MAN DOOR
TRANSITION HEAD/JAMB DETL.**
NTS

Order Plans @ www.LDOnline.com