

**GENERAL NOTES**  
 A. CONTRACTOR TO RESERVE SPECIFIED MAPES CANOPY UPON BEING AWARDED THE BID TO ENSURE AVAILABILITY AND TIMELY INSTALLATION. SUBSTITUTIONS ARE NOT PERMITTED.

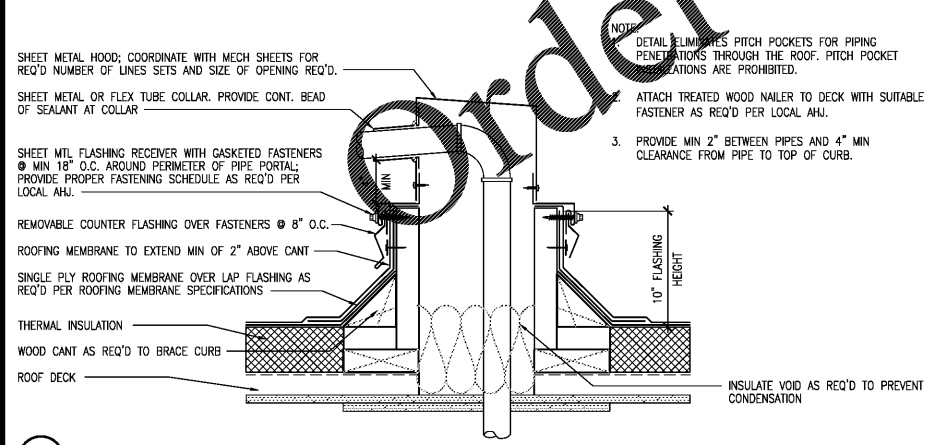
**INTERPLAN**  
 ARCHITECTURE  
 ENGINEERING  
 INTERIOR DESIGN  
 PROJECT MANAGEMENT  
 AA 003420  
 CA 8660  
 604 COURTLAND STREET  
 SUITE 100  
 ORLANDO, FLORIDA 32804  
 PH 407.645.5008  
 FX 407.629.9124

- KEY NOTES**
- SCUPPER WITH CONDUCTOR HEAD. SEE DETAIL 5/A6.1.
  - OVERFLOW SCUPPER. SEE DETAIL 6/A6.1.
  - SINGLE PLY ROOFING WITH MINIMUM 5" ISO BOARD INSULATION OVER METAL DECKING, MECHANICALLY FASTENED.
  - WALKING PAD, TO BE A MINIMUM 30" AROUND MECHANICAL UNITS.
  - BAR JOIST BELOW. REFER TO STRUCTURAL DRAWINGS FOR EXACT LOCATION.
  - CRICKET WITH TAPERED INSULATION.
  - FLEXPACK. REF TO MECHANICAL DRAWINGS.
  - RTU. REF TO MECHANICAL DWGS. REF TO DET. 2 IN THIS SHEET FOR CURB FLASHING
  - VENT/PIPE. REFER TO DETAIL 3 ON THIS SHEET AND MEP DRAWINGS.
  - REFRIGERANT PIPE PORTAL. REFER TO DETAIL 1 ON THIS SHEET.
  - CANOPY BELOW.
  - PRE-FINISHED DARK BRONZE VERSA TERM COVER.
  - PRISMATIC SKYLIGHT, REF EF-1.0 SHEET AND DETAIL 4 ON THIS SHEET.
  - BACKLIT FASCIA SIGN BY SIGN CONTRACTOR, UNDER SEPARATE PERMIT.
  - BAROMETRIC DAMPER - REF TO MECHANICAL DRAWINGS.
  - EXTERIOR WALL LIGHTING.
  - EXHAUST DUCT - REF TO MECHANICAL DRAWINGS.
  - CONDENSER. REF TO MECHANICAL DRAWINGS.
  - SANITARY VENT THRU ROOF. REF TO MECHANICAL DRAWINGS.

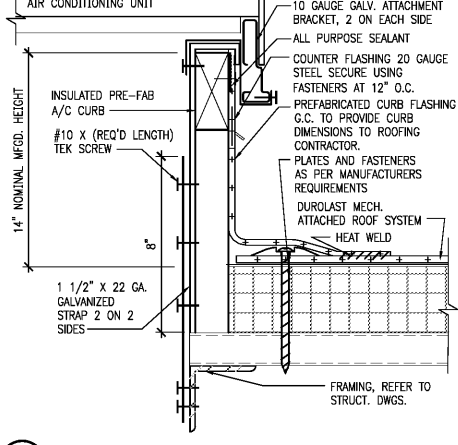
**ROOF DRAINAGE CALCULATION**

TOTAL SLOPED ROOF AREA:	4,414 SF
TOTAL PARAPET AREA:	248 SF
TOTAL ROOF AREA:	4,660 SF
PER TABLE 1106.6	
(TOTAL ROOF AREA) 4,660 SF / (5" RAINFALL PER HOUR W/ 6" GUTTER) 10,800	
1/h. = 2.88 OR (3) 6" GUTTERS REQUIRED FOR TOTAL ROOF AREA OF DRAINAGE.	
NUMBER OF 6" GUTTERS PROVIDED FOR 4,925 SF OF ROOF DRAINAGE = 4	

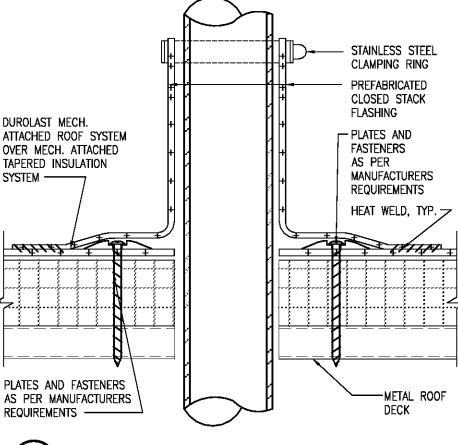
**ARCHITECTURAL ROOF PLAN**



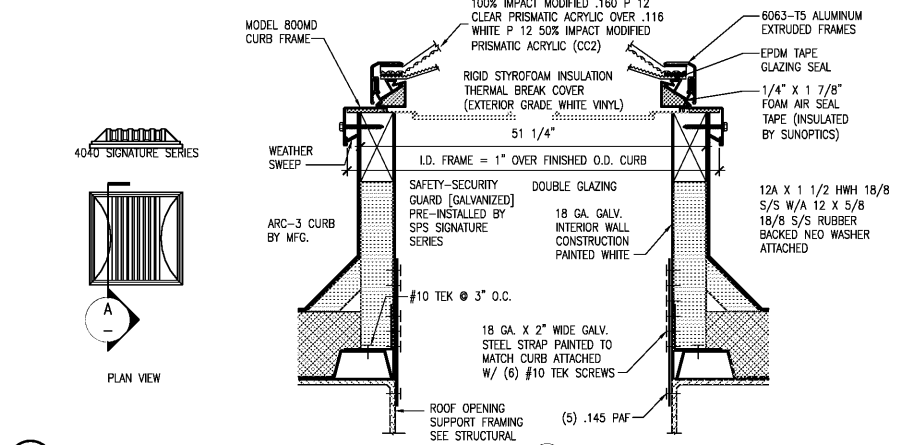
**1 PIPE PORTAL DETAIL** 1 1/2" = 1'-0"



**2 HVAC UNIT CURB FLASHING DTL** 3" = 1'-0"



**3 PIPE PENETRATION DETAIL** 3" = 1'-0"



**4 SKYLIGHT DETAIL** 1/2" = 1'-0"

1 03.18.19 PEER COMMENTS  
 NO. DATE REMARKS  
 REVISIONS



BID SET  
 JUNE 27, 2019  
**7-ELEVEN**  
**STORE #38777**  
 12060 US 301 N  
 PARRISH, FL  
 34219

PROJECT NO: 2018.0891  
 DATE: FEBRUARY 26, 2019

**A2.3**  
 ROOF PLAN

CHECKED: RW DRAWN: JUM

COPYRIGHT © 2019 INTERPLAN LLC. RESERVE RIGHTS RESTRICTING THESE DOCUMENTS TO THE ORIGINAL USE OR TYPING FOR WHICH THEY WERE PREPARED. REPRODUCTIONS, CHANGES OR ASSIGNMENTS ARE PROHIBITED.