

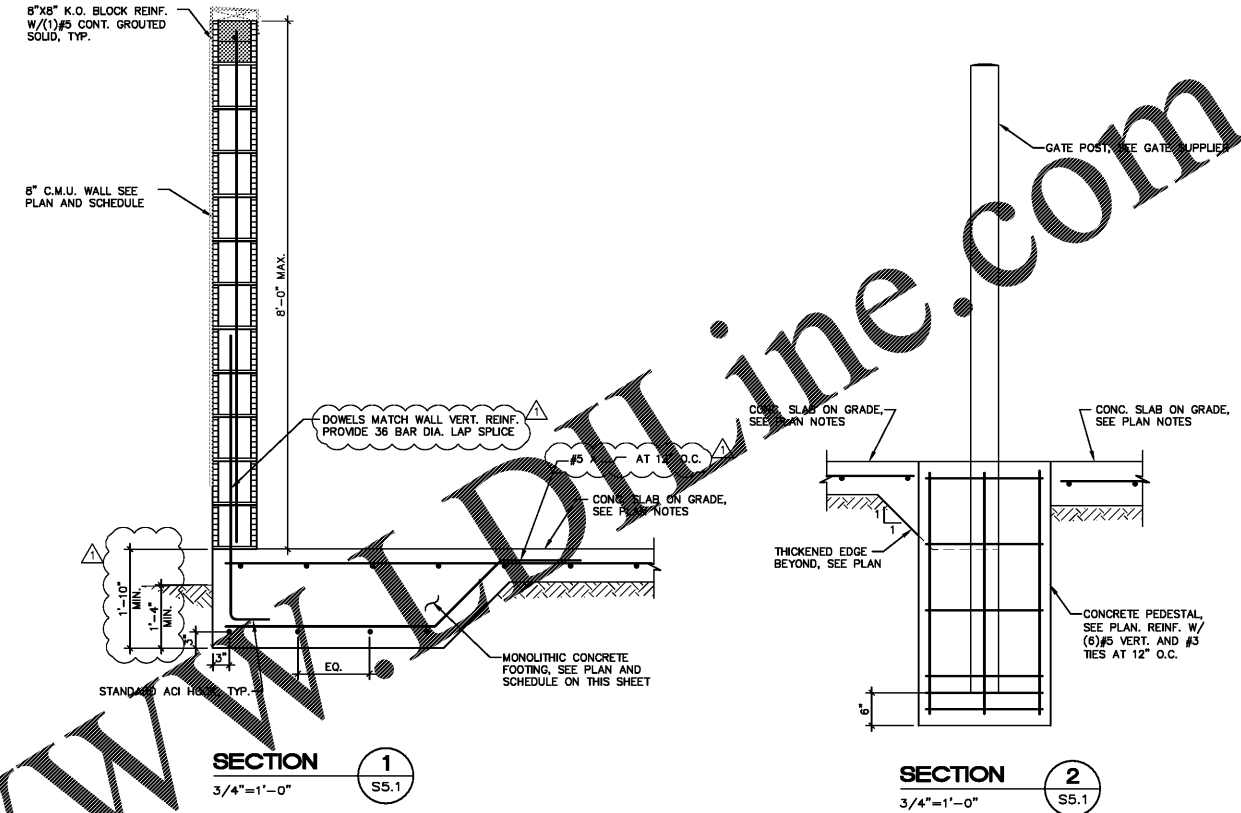
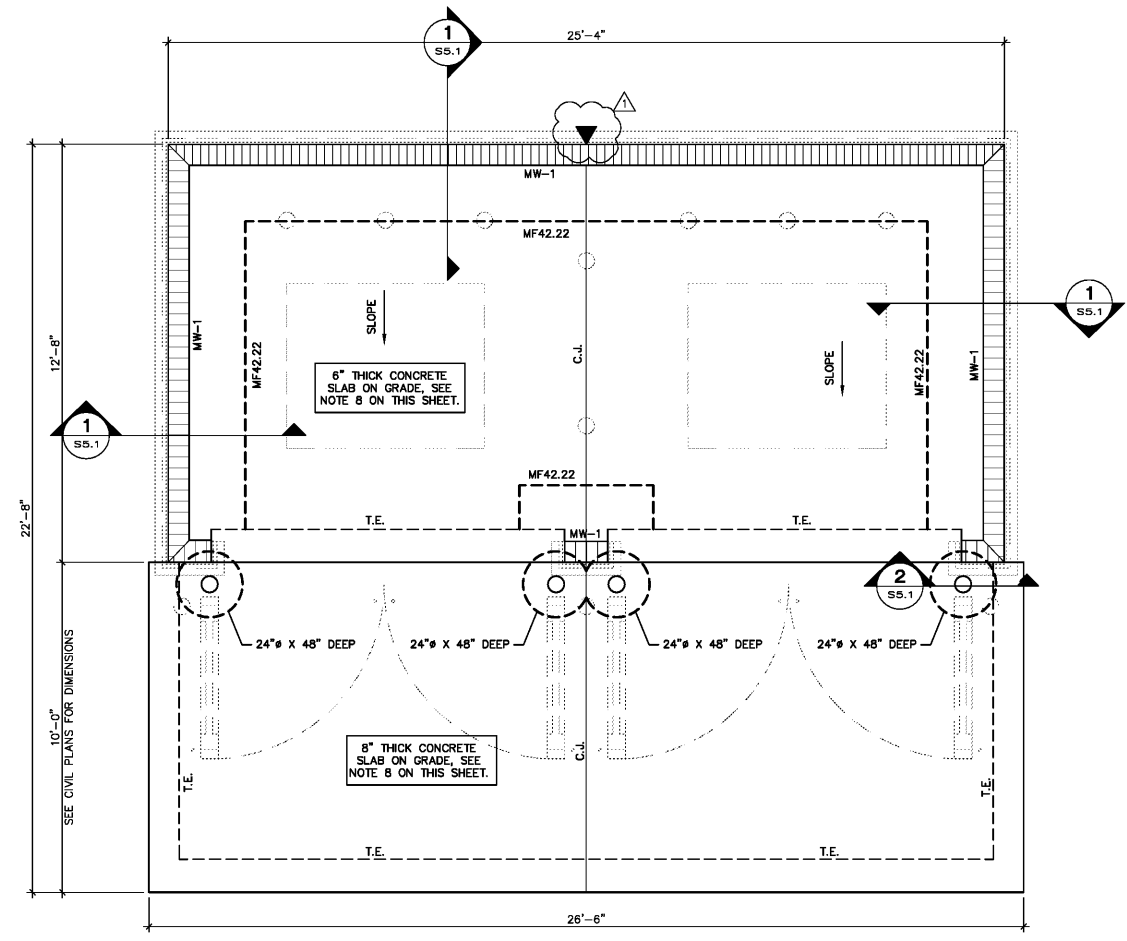
SEAL:

THIS DOCUMENT IS NOT  
FOR REGULATORY  
APPROVAL, PERMITTING,  
OR CONSTRUCTION.

BJARNE MADSEN, P.E.  
FL 58683



1673 LAKE BALDWIN LANE  
ORLANDO, FLORIDA 32814  
PH. (407) 252-4225  
LIC EB28029  
PROJECT # IP19-05



1 DUMPSTER ENCLOSURE - FOUNDATION PLAN 3/8" = 1'-0"

FOUNDATION NOTES:

- ELEV. ±0'-0" IS REFERENCE ONLY. SEE CIVIL FOR TRUE NGVD ELEVATION.
- C.J. INDICATES CONTROL JOINT SEE S4.1 FOR DETAILS.
- T.E. INDICATES THICKENED EDGE SEE S4.1 FOR DETAILS.
- VERIFY SLOPES AND STEPS WITH ARCH'L PRIOR TO CONSTRUCTION. SEE TYPICAL STEP DETAIL ON S4.1.
- ALL MASONRY WALLS ARE MW-1 U.N.O. SEE SCHEDULE ON THIS SHEET.
- MF-# DENOTES MONOLITHIC CONCRETE FOOTING. SEE SCHEDULE ON THIS SHEET.
- INDICATES WALL CONTROL JOINT, SEE DETAIL ON S4.1.
- FLOOR CONSTRUCTION: 6" THICK CONCRETE SLAB ON GRADE W/ #4 AT 12" O.C. E.W. MID-DEPTH, AND 8" THICK CONCRETE SLAB REINF. W/ #5 AT 12" O.C. E.W. MID-DEPTH.
- FOOTING EXCAVATIONS SHALL BE FREE OF WATER BEFORE PLACING CONCRETE.
- CONTRACTOR TO COORDINATE ALL FLOOR DRAINS AND PLUMBING PRIOR TO PLACING CONCRETE FOOTINGS OR SLAB.

MASONRY WALL SCHEDULE		
MARK	THICKNESS	REINFORCING
MW-1	8" CMU	#6 AT 24" O.C.

FOOTING SCHEDULE		
MARK	SIZE	REINFORCING
MF42.22	3'-6" X 48" DEEP	#5 CONT. BOTTOM

MASONRY WALL NOTES:

- WALL SEGMENTS SHALL BE REINFORCED WITH 9 GA. GALVANIZED LATERAL REINFORCING @ 16" O.C. HORIZ. EXTEND REINFORCING 6" INTO POURED ELEMENTS AND AROUND ENCASED STEEL.
- ADJACENT TO ANY EXTERIOR/INTERIOR WALL OPENING, PLACE 1 #5 VERTICAL IN CELL GROUDED SOLID, FULL HEIGHT.
- ALL MASONRY REINFORCED CELLS SHALL BE FILLED WITH 3000 PSI GROUT MIX.

STRUCTURAL NOTES

CODES AND STANDARDS

- WIND LOADS AS PER:
  - FLORIDA BUILDING CODE 2017 EDITION, FOR A 150 MPH(ULT)/116 MPH(ASD) EXPOSURE C, +/-0.18 INTERNAL PRESSURE COEFFICIENT, 1.0 IMPORTANCE FACTOR, AND RISK CATEGORY II.
  - THIS BUILDING IS DESIGNED AS AN ENCLOSED BUILDING.
- THE PROJECT WAS DESIGNED IN ACCORDANCE WITH THE:
  - FLORIDA BUILDING CODE 2017 EDITION.
  - BUILDING CODE REQUIREMENTS FOR REINFORCED CONCRETE (ACI 318/ 2014 EDITION).
  - MANUAL OF STANDARD PRACTICE FOR DETAILING REINFORCED CONCRETE STRUCTURES (ACI 315/ LATEST EDITION).
  - MANUAL OF STANDARD PRACTICE FOR WELDING REINFORCING STEEL, INSERTS & CONNECTIONS IN REINFORCED CONCRETE CONSTRUCTION. AWS. D1.4/ 1998 EDITION.
- FLOOR LIVE LOAD: 250 PSF.

FOUNDATION

- ALL SITE PREPARATION AND EXCAVATION WORK IS TO BE PERFORMED IN STRICT ACCORDANCE WITH THE:
  - GEOTECHNICAL REPORT PREPARED BY FOUNDATION & GEOTECHNICAL ENGINEERING, LLC DATED NOVEMBER 7, 2018 (PROJECT No. 1548-G18-S).
- THE BUILDING SITE SHOULD BE EXCAVATED TO THE DEPTH AND EXTENT INDICATED IN THE SOILS REPORT. ALL SUBGRADES SHALL BE APPROVED IN WRITING BY THE SOILS ENGINEER PRIOR TO BACKFILLING.
- BOTTOM OF FOOTINGS TO BEAR ON SOIL CAPABLE OF SAFELY SUPPORTING 2500 PSF.

Order Plans @ WWW.DIline.com

NO.	DATE	REMARKS
1	03/19/19	PEER COMMENTS



BID SET  
JUNE 27, 2019

7-ELEVEN  
STORE #38777

US 301 & FORT HAMER RD.  
PARRISH, FL  
34219

PROJECT NO: 2018.0891  
DATE: FEBRUARY 26, 2019

S5.1

DUMPSTER ENCLOSURE  
AND SECTIONS

CHECKED: BM DRAWN: RED

COPYRIGHT © 2019 INTERPLAN LLC. RESERVE COPYRIGHT & OTHER RIGHTS RESTRICTING THESE DOCUMENTS TO THE ORIGINAL SET OR TYPED COPY WHICH THEY WERE PREPARED. REPRODUCTIONS, CHANGES OR ASSIGNMENTS ARE PROHIBITED.