



NO.	DATE	REMARKS
1	03/19/19	PEER COMMENTS



BID SET
JUNE 27, 2019

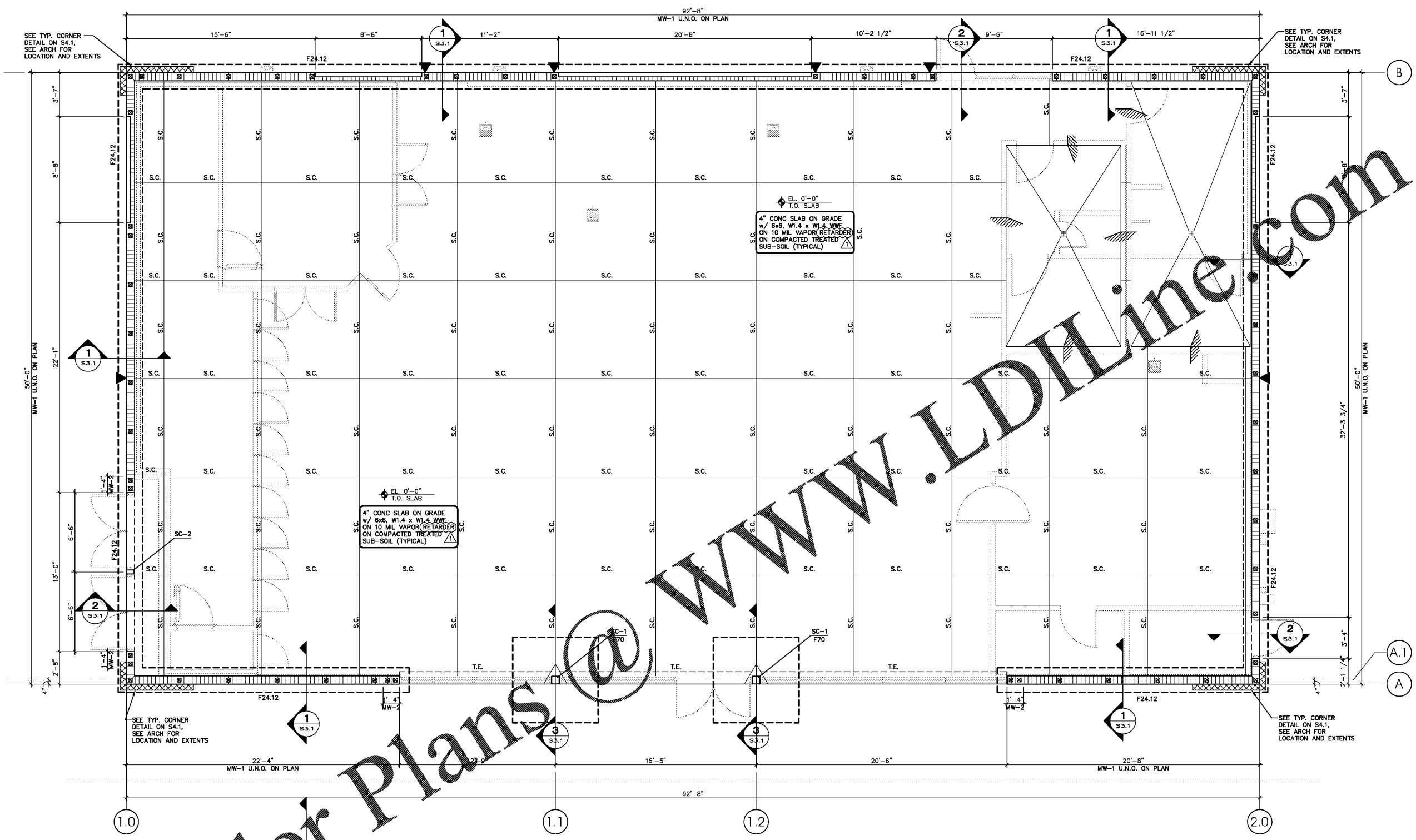
**7-ELEVEN
STORE #38777**

US 301 & FORT HAMER RD.
PARRISH, FL
34219

PROJECT NO: 2018.0891
DATE: FEBRUARY 26, 2019

S1.1
FOUNDATION PLAN

CHECKED: BM DRAWN: RED



EL. 0'-0" T.O. SLAB
4" CONC SLAB ON GRADE w/ 6x6, W1.4 x W1.4 WME ON 10 MIL VAPOR RETARDER ON COMPACTED TREATED SUB-SOIL (TYPICAL)

EL. 0'-0" T.O. SLAB
4" CONC SLAB ON GRADE w/ 6x6, W1.4 x W1.4 WME ON 10 MIL VAPOR RETARDER ON COMPACTED TREATED SUB-SOIL (TYPICAL)

FOUNDATION NOTES:

- ELEV. ±0'-0" IS REFERENCE ONLY. SEE CIVIL FOR TRUE NGVD ELEVATION.
- S.C. INDICATES SAW CUT SEE S3.1 FOR DETAILS.
- TOP OF FOOTING ELEVATION = -2'-0" BELOW GRADE.
- VERIFY SLOPES AND STEPS WITH ARCH'L PRIOR TO CONSTRUCTION. SEE TYPICAL STEP DETAIL ON S3.1.
- F## DENOTES CONCRETE FOOTING, SEE SCHEDULE ON S3.1.
- INDICATES FILLED CELL. ALL MASONRY WALLS ARE MW-1 U.N.O., SEE SCHEDULE ON S3.1 FOR SIZE AND SPACING OF REBAR.
- ▼ INDICATES WALL CONTROL JOINT, SEE DETAIL ON S3.1.
- T.E. DENOTES THICKENED EDGE, SEE DETAIL ON S3.1.
- SC-# INDICATES STEEL COLUMN SEE SCHEDULE ON S3.1.
- INDICATES 3-5/8" X 18GA. METAL STUDS AT 16" O.C. MAX., SEE TYP. DETAILS ON S4.1. USE 5/8" PLYWOOD SHEATHING ATTACH W/ #10 TEK SCREWS AT 6" O.C.
- MC-# INDICATES MASONRY COLUMN, SEE SCHEDULE ON S3.1.

FOUNDATION PLAN

1/4" = 1'-0"



Order Plans @