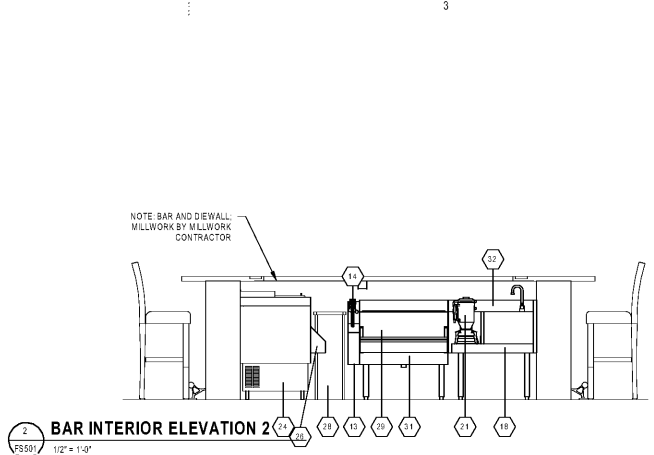
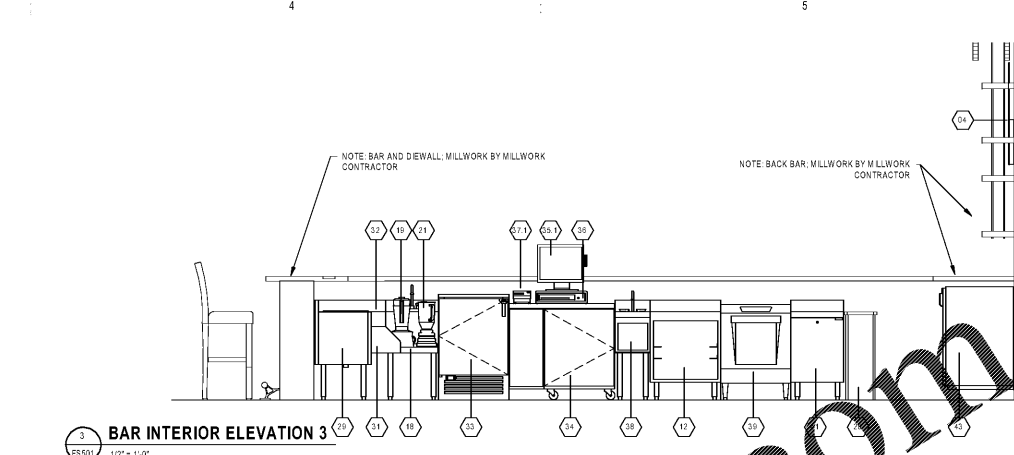


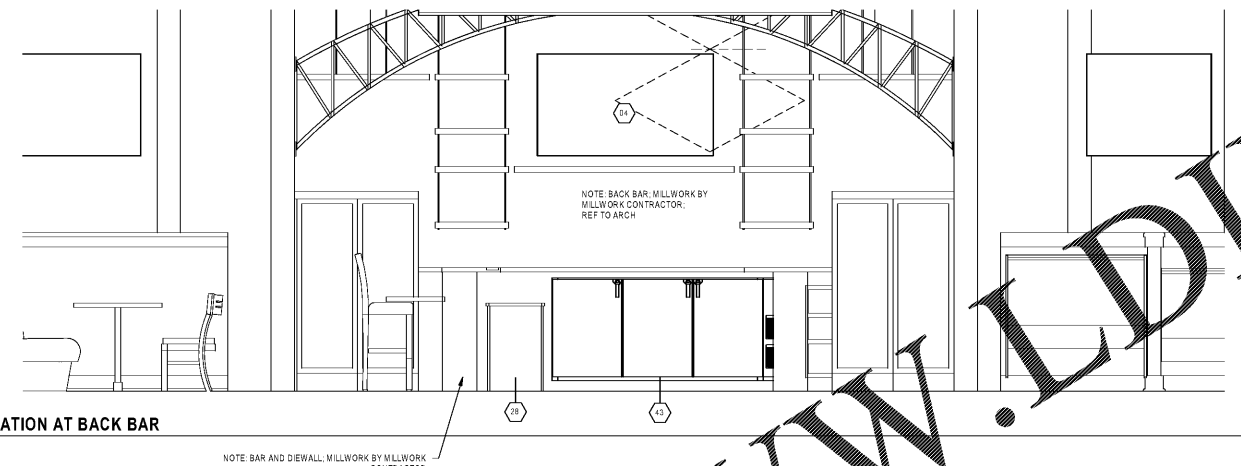
1 BAR INTERIOR ELEVATION 1
FS501 1/2" = 1'-0"



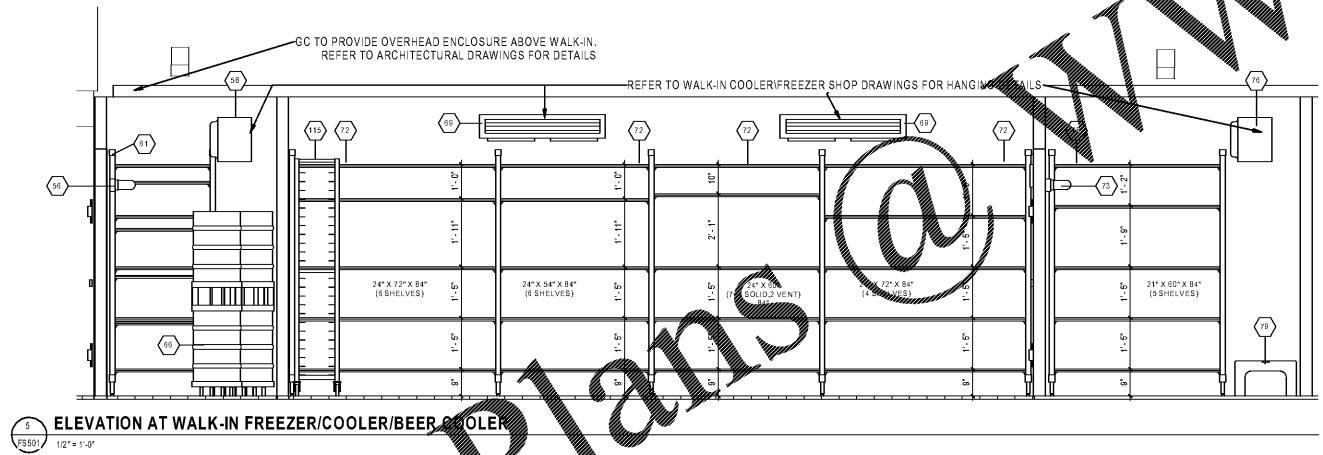
2 BAR INTERIOR ELEVATION 2
FS501 1/2" = 1'-0"



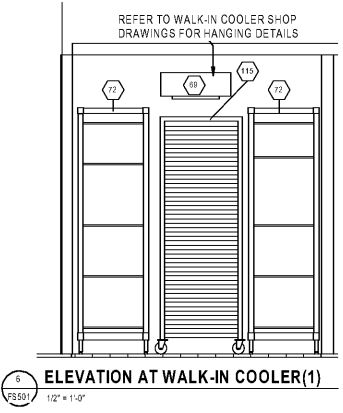
3 BAR INTERIOR ELEVATION 3
FS501 1/2" = 1'-0"



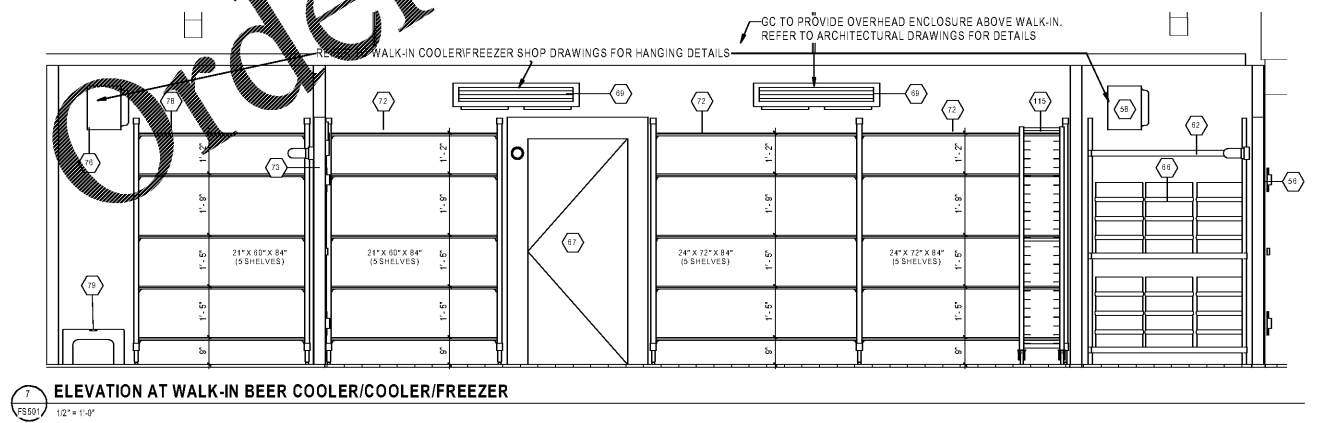
4 ELEVATION AT BACK BAR
FS501 1/2" = 1'-0"



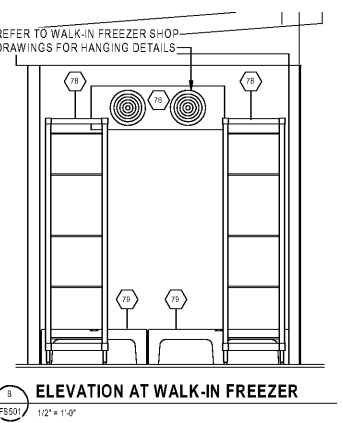
5 ELEVATION AT WALK-IN FREEZER/COOLER/BEER COOLER
FS501 1/2" = 1'-0"



6 ELEVATION AT WALK-IN COOLER(1)
FS501 1/2" = 1'-0"



7 ELEVATION AT WALK-IN BEER COOLER/COOLER/FREEZER
FS501 1/2" = 1'-0"



8 ELEVATION AT WALK-IN FREEZER
FS501 1/2" = 1'-0"



Mark S. Salopek, LLC
3638 West Galloway Drive
Richfield, OH 44286
330.572.2112 330.572.2102

BLOOMIN BRANDS
HIALEAH, FL - OUTBACK STEAKHOUSE
1751 W 48TH STREET
HIALEAH, FLORIDA 33012

SHEET ISSUE:
OUT TO PERMIT: 3/21/19

PRINCIPAL IN CHARGE: MS
PROJECT ARCHITECT: MS
DRAWN BY: TDD
SHEET TITLE:
FOODSERVICE EQUIPMENT ELEVATIONS

SHEET NO. PROJ. NO.
2018231.29

FS501