

ITEM #	DESCRIPTION	QTY	EA LOT	MANUFACTURER	MODEL	BACKLASH	SHALL/W/	BY OWNER	BY OTHER	DIRECT WASTE SIZE	DIRECT WASTE HEIGHT	INDIRECT WASTE SIZE	PLUMBING REMARKS (BELOW SLAB)	COMMENTS
56	STAINLESS STEEL PICK-UP	1	EA	MICRO MATIC USA	DR MET-124	X				3/4"				
59	BEER TROUGH WITH GLASS RINSER	1	EA	GLAS TENDER	C-DIGA-24	X				1/2"				
67	GLASSBACK STORAGE	1	EA	GLAS TENDER	C-0603-21	X				3/4"				
68	3P ICE BIN	1	EA	GLAS TENDER	C-0613-CPH	X				3/4"				
69	BLENDER STATION WITH SINK	2	EA	GLAS TENDER	C-060-18	X				1 1/2"				
27	18"X21" CORNER DRAINBOARD	1	EA	GLAS TENDER	C-06-C-1904L	X				1 1/2"				
29	3P ICE BIN	1	EA	GLAS TENDER	C-06A-39-CPH-ED	X				3/4"				
32	24"X30" CORNER DRAINBOARD	1	EA	GLAS TENDER	C-06-C-2008K	X				1"				
36	HAND SINK WITH SOAP AND TOWEL	1	EA	GLAS TENDER	C-158-12-0	X				1 1/2"				10" HIGH SIDE SPLASHES
39	GLASSWASHER	1	EA	HOBART	LXGR-200	X				3/4"			DISCHARGES HIGH TEMP WATER	
41	18"X21" REWARD CABINET	1	EA	GLAS TENDER	C-0603-18	X				1/2"				FOR ITEM 55
58	MEDIUM TEMP BLOWER COOL	1	EA	AMERICAN PANEL	101780		X			1"				FOR ITEM 67
60	MEDIUM TEMP BLOWER COOL	2	EA	AMERICAN PANEL	84075		X			1"				FOR ITEM 67
76	LOW TEMP BLOWER COOL	1	EA	AMERICAN PANEL	LE1815		X			1"			SELEC TO ADD DRAIN HEAT TAPE	
85	POTATO STEAMER	1	EA	VULCAN-HART	CNE03	X				1/2"			DISCHARGES HIGH TEMP WATER	
88	TWO COMPARTMENT SINK	1	EA	CUSTOM FABRICATION	CUSTOM		X			1 1/2"			MANFOLD (2) DRAINS	
100	THREE COMPARTMENT SINK	1	EA	CUSTOM FABRICATION	CUSTOM		X			1 1/2"			MANFOLD (2) DRAINS	
103	CHEESEMELTER	1	EA	VULCAN-HART	CM-8	X				1"				
108	CHEF COUNTER WITH (2) HAND SINKS	1	EA	CUSTOM FABRICATION	CUSTOM		X			1 1/2"			(2) 1 1/2" ID DRAINS ROUTED TO FLOOR SINK	

ITEM #	DESCRIPTION	QTY	EA LOT	MANUFACTURER	MODEL	BACKLASH	SHALL/W/	BY OWNER	BY OTHER	DIRECT WASTE SIZE	DIRECT WASTE HEIGHT	INDIRECT WASTE SIZE	PLUMBING REMARKS (BELOW SLAB)	COMMENTS
106	RYN INSULATED CONDENSATE HOLDER	2	EA	CUSTOM FABRICATION	CUSTOM					1"				ONLY (1) SHOWN IN PLAN
106	INSULATED CONDENSATE HOLDER	2	EA	CUSTOM FABRICATION	CUSTOM					1"				
209	ICE COOLED DRINK DISPENSER	2	EA	JANCO	CD 2800			X	X	3/4"				BY SODA VENDOR WITH BASE
211	BEV. COUNTER WITH HAND SINK	1	EA	CUSTOM FABRICATION	CUSTOM			X	X	1 1/2"				ROUTE (2) 1 1/2" AND (1) 1" DRAIN TO FLOOR SINK
220	ICE MACHINE	2	EA	BOSSBANK	SH686L7			X	X	3/4"				
227	ICE BIN	1	EA	FOLLETT	5016955-60			X	X	1"				PLUMBER TO ROUTE DRAIN TO "T" TROUGH
229	FLOOR TROUGH WITH GRATE	1	EA	CUSTOM FABRICATION	CUSTOM			X	X	4"				FLOOR RECESS REQUIRED
233	3SH TABLE, SOLED	1	EA	CUSTOM FABRICATION	CUSTOM			X	X	1"				
239	RACK CONVEYOR DISHWASHER	1	EA	HOBART	DL48E-1			X	X	2"				DISCHARGES HIGH TEMP WATER

PLUMBING GENERAL NOTES:

- PLUMBING CONTRACTORS TO OBTAIN ALL NECESSARY PERMITS AND INSTALLATION IS TO BE IN COMPLETE ACCORDANCE WITH ALL NATIONAL, STATE, AND LOCAL CODES.
- PLUMBING CONTRACTORS SHALL FURNISH ALL LABOR AND MATERIALS TO MAKE ALL FINAL CONNECTIONS AND SHALL INCLUDE ALL ITEMS REQUIRED BY ALL LOCAL CODES.
- A CATALOG OF MANUFACTURERS EQUIPMENT SPECIFICATIONS IS INCLUDED AS AN INTEGRAL PORTION OF THIS SUBMITTAL. WE SUGGEST THAT YOU REVIEW THE REQUIREMENTS AS INDICATED REGARDING EACH MANUFACTURERS EQUIPMENT.
- CROSS REFERENCE ALL INFORMATION PER EQUIPMENT WITH THE EQUIPMENT SCHEDULE.
- PLUMBING CONTRACTORS TO CROSS REFERENCE EQUIPMENT WITH MANUFACTURER SHOP DRAWINGS FOR STAINLESS STEEL FABRICATION, WALK-IN COOLER AND FREEZER INSTALLATION, AND MILL WORK DETAIL DRAWINGS.
- PLUMBING CONTRACTORS TO COORDINATE ALL VENTS AND RUNS.
- ALL FUNNEL FLOOR DRAINS, FLOOR SINKS AND/OR FLOOR DRAINS UTILIZED FOR THE DRAINAGE OF FOOD SERVICE EQUIPMENT SHALL BE SELF-PRIMING.
- PLUMBING CONTRACTORS TO PROVIDE ALL INDIRECT DRAINS FROM EQUIPMENT TO FLOOR SINK DRAINS.
- ALL PLUMBING TO BE INSTALLED AS TO PRECLUDE ANY POSSIBILITY OF BACK Siphon.
- INDIRECT DRAINS ARE TO BE AIR-GAPPED 1" ABOVE FLOOR DRAINS, OR PER LOCAL CODES.
- ANY DRAIN SUPPORTS NEED TO BE MOUNTED TO FABRICATED EQUIPMENT CROSS-BRACING. P.C. SHALL NOT MOUNT SUPPORTS TO SLAB FLOOR UNLESS NO OTHER OPTIONS ARE AVAILABLE.

WALK-IN GENERAL NOTES:

- DRAIN LINES AND "P" TRAPS SHALL BE SUPPLIED AND INSTALLED BY PLUMBING CONTRACTOR OR REFRIGERATION CONTRACTOR IN ACCORDANCE WITH ALL LOCAL CODES.
- DRAIN LINES TO BE RIGID COPPER.
- GC TO PROVIDE ANY PENETRATIONS IN BUILDING WALLS, FLOORS OR CEILING FOR ROUTING OF REFRIGERATION AND DRAIN LINES. GC TO SEAL ALL PENETRATIONS ONCE INSTALLATION IS COMPLETE.
- INSTALL CLEAN-OUTS AT FIRST 90 DEGREE TURN FROM EVAP COIL IN DRAIN LINE.
- RUN DRAIN LINES AS HIGH AS POSSIBLE WHILE MAINTAINING A POSITIVE SLOPE AND AVOIDING SHELVING WHERE POSSIBLE.

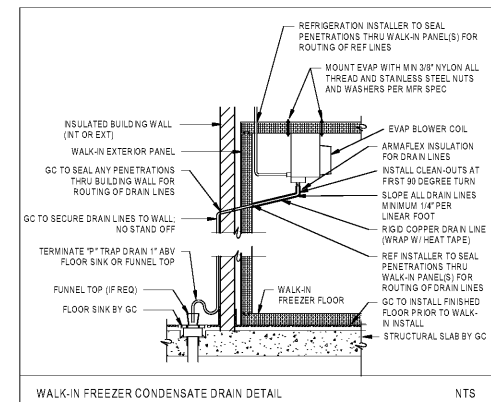
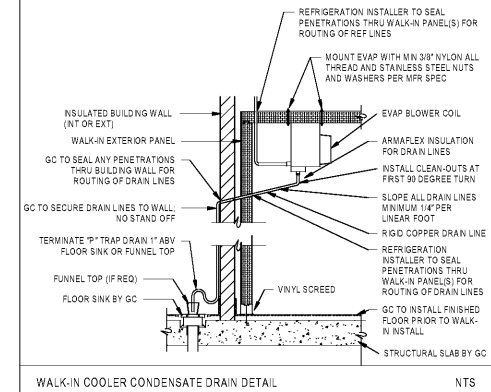
SHEET KEYNOTES

P1 RUN CONDENSATE DRAIN LINES FOR ALL WALK-IN EVAPORATOR COILS IN COPPER. RUN DRAIN LINES AS HIGH AS POSSIBLE WHILE MAINTAINING A POSITIVE SLOPE AND AVOIDING SHELVING WHERE POSSIBLE. INSTALL CLEAN-OUTS AT FIRST 90 DEGREE TURN FROM EVAPORATOR COIL IN DRAIN LINE.

P2 SECURE DRAIN LINES TO WALL. NO STAND OFF.

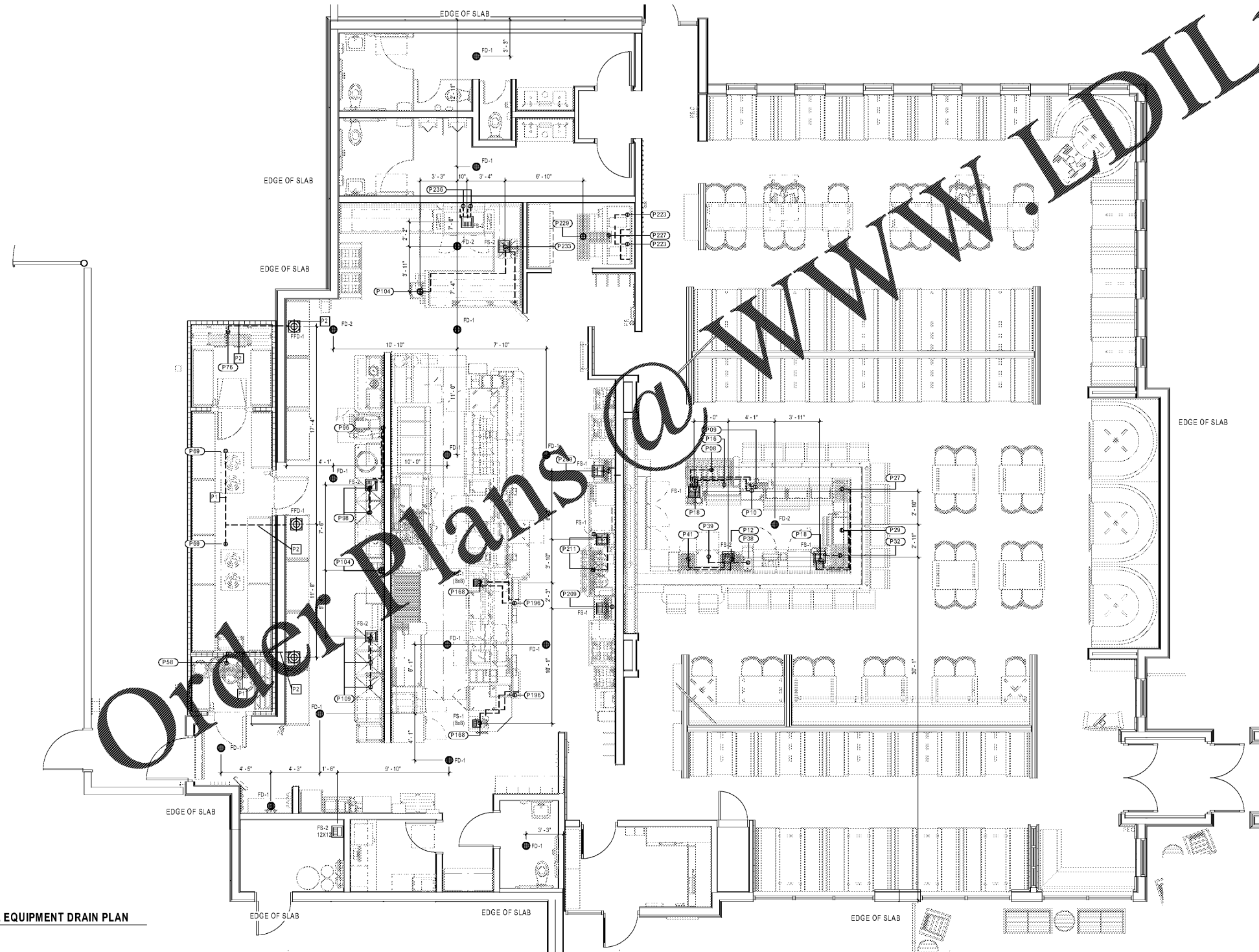
P3 DRAIN LINES TO PENETRATE WALL AT 6" AFF.

P4 DIM TO EDGE OF SLAB.



PLUMBING (BELOW GROUND) LEGEND

- WASTE DIRECT-CONNECTED UNLESS NOTED "OPEN HUB"
- INDIRECT WASTE - ROUTED TO FLOOR SINK (OR AS NOTED)
- FLOOR DRAIN
 - (FD-1) - EPOXY COATED CAST IRON
 - (FD-2) - CAST IRON
- FLOOR SINK (12X12 TYP. 8X8 NOTED)
 - (FS-1) - PVC
 - (FS-2) - CAST IRON + 10' OF DRAIN PIPE - WATER TEMP OF 180 DEGREES
- FLOOR SINK
 - (FPD-1) - PVC WITH CONDENSATE FUNNEL
- FIELD CONNECTION



Mark S. Salopek, LLC
3638 West Galloway Drive
Richfield, OH 44286
330.572.2112 330.572.2102

BLOOMING BRANDS
HIALEAH, FL - OUTBACK STEAKHOUSE
1751 W 48TH STREET
HIALEAH, FLORIDA 33012

SHEET ISSUE
OUT TO PERMIT: 3/21/19

PRINCIPAL IN CHARGE: MS
PROJECT ARCHITECT: MS
DRAWN BY: TDD

SHEET TITLE:
FOODSERVICE EQUIPMENT PLUMBING DRAINS

SHEET NO. FS201
PROJ. NO. 201821.29

FS201