

**BLDG COND GENERAL NOTES**

- A. ALL KITCHEN AREAS SHALL HAVE CONTINUOUS 1/2" PLYWOOD SHEATHING W/ FRP TO MEET DUROCK AT 12" AFF. FIRE RATED IF REQUIRED BY CODE. EXCEPT HOOD WALLS WHICH SHALL BE 1/4 GAUGE GALVANIZED PANELS, 1/2" DUROCK AND STAINLESS STEEL PANELS. COOLER SIDE OF COOLER/FREEZER WALLS TO RECEIVE 1/2" MOISTURE RESISTANT GYPSUM BOARD TO 12" DUROCK AT 12" AFF. AND MOP SINK TO RECEIVE DUROCK.
  - B. GC TO PROVIDE 2X8 BLOCKING AT ALL CANTILEVERED TABLE BASES. REF ARCHITECTURAL WALL SECTIONS.
  - C. GC TO PROVIDE WOOD BLOCKING OF SUFFICIENT SIZE TO ANCHOR ALL TOILET PARTITIONS, LAVATORIES, ACCESSORIES, TABLE TOPS, SHELVEING, ETC. THROUGHOUT BUILDING.
  - D. GC TO USE THIS DRAWING IN CONJUNCTION WITH THE KITCHEN EQUIPMENT DRAWINGS.
  - E. ALL DIMENSIONS ARE FROM FINISH FACE, OR CENTER OF COLUMN UNLESS OTHERWISE NOTED.
- \*\*\*\*BACKING = 1/2" PLYWOOD  
 \*\*\*\*\*BLOCKING = 2X SOLID STRUCTURAL WOOD SUPPORT

**WALK-IN GENERAL NOTES**

- 1. QUARRY TILE AND SETTING BED TO BE INSTALLED PRIOR TO WALK-IN INSTALL.
  - 2. SEAL ALL JOINTS AND EDGES TO MEET CODES.
  - 3. WALK-IN TO BE INSTALLED ON LEVEL FLOOR.
- W2** WALL BACKING TO PROVIDE STAINLESS STEEL PANELS OVER 1/2" DUROCK OVER 1/4 GAUGE STEEL WALLBACKING OVER METAL STUDS - 1/2" AFF DOWN TO FINISHED FLOOR.
- W4** WALL BACKING TO PROVIDE 1/2" DUROCK OVER 1/4 GAUGE STEEL WALL BACKING OVER METAL STUDS FROM 12" AFF TO FINISHED FLOOR AT PREP SIDE OF WALL.
- W7** STAINLESS STEEL WALL FINISH FROM 12" AFF DOWN TO FLOOR.
- W9** WALL BACKING AT WATER FILTERS FROM 12" AFF DOWN TO 48" AFF.

**SHEET KEYNOTES GENERAL**

- M1. WALK-IN COOLER/FREEZER TO BE INSTALLED ON LEVEL SLAB. REFER SHOP DRAWINGS FOR DETAILS.
- M2. REF MECHANICAL FOR EXHAUST HOOD DETAILS AND REQUIREMENTS.
- M3. FLOOR RECESS REQUIRED.
- M4. CONCRETE CURB.
- M5. UTILITY CHASE FROM ABOVE FOR REMOVE COMPRESSOR REFRIGERATION LINES CONNECTED TO BLOWER COIL AS SPECIFIED. REFRIGERATION LINES TO PENETRATE THE WALK-IN AT 8'-0".

**REMOTE REFRIGERATION AND EXHAUST/SUPPLY FANS**

REFER TO ARCHITECTURAL AND MECHANICAL DRAWINGS FOR EXACT LOCATION AND REQUIREMENTS OF COMPRESSORS AND FANS.

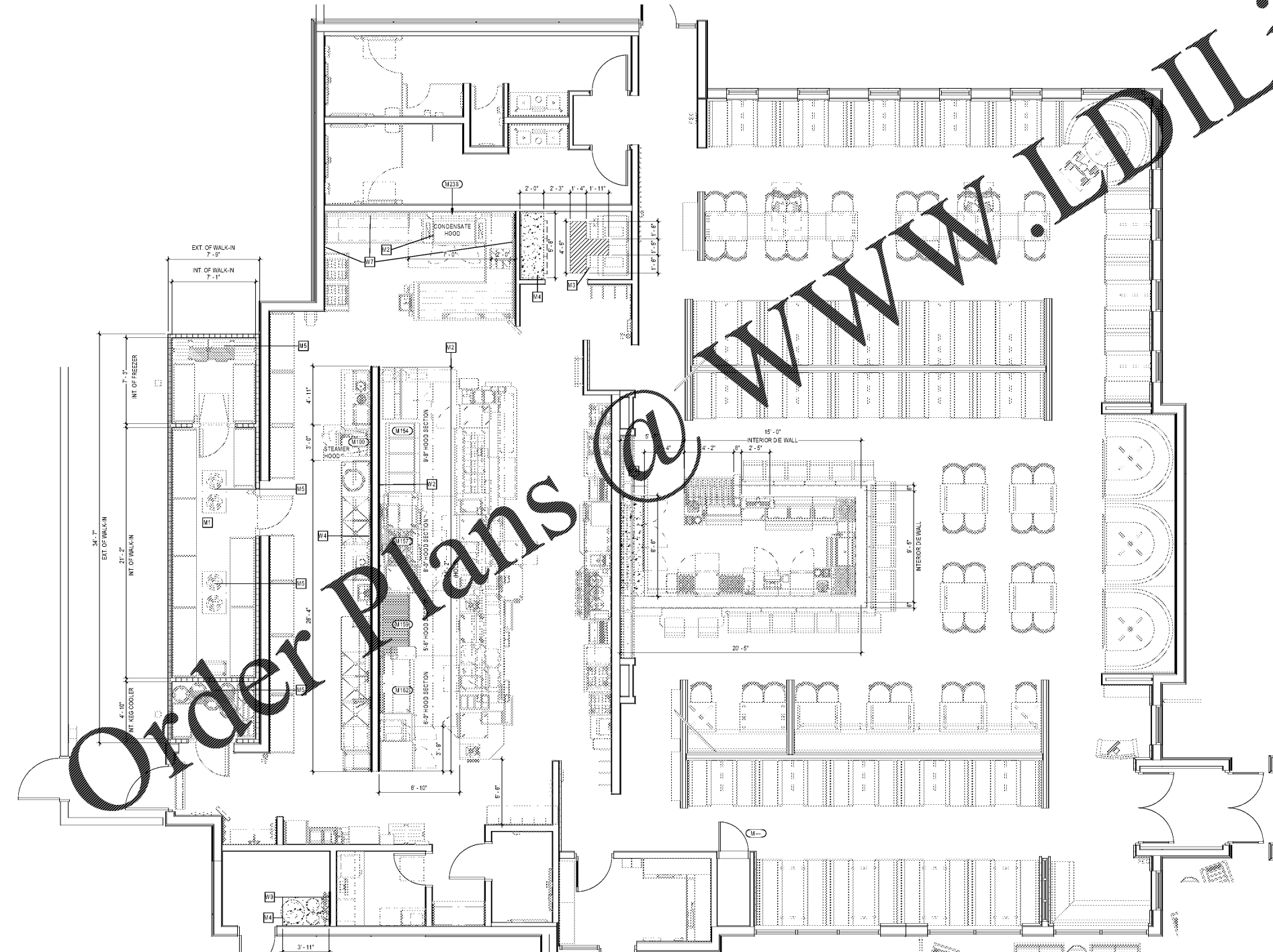
MINIMUM CLEARANCE REQUIREMENTS MUST BE MAINTAINED.

PROVIDE ROOF RAIL SUPPORT FOR REFRIGERATION CONDENSING UNIT. COORDINATE WITH ARCHITECTURAL PLANS.

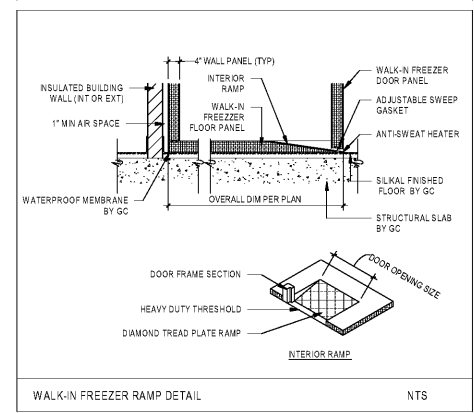
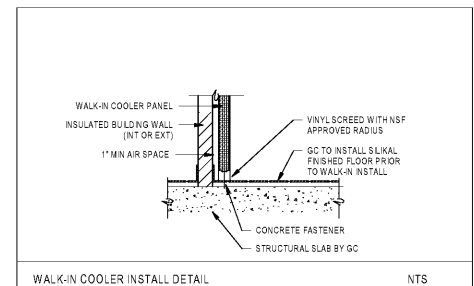
SEE MANUFACTURER'S SHOP DRAWINGS FOR DETAILED MECHANICAL, PLUMBING AND ELECTRICAL REQUIREMENTS.

**FOODSERVICE EQUIPMENT MECHANICAL REQUIREMENTS SCHEDULE**

Item #	Description	Qty	EA/EA	Manufacturer	Model	REV. OUT	SHALL/SHOULD/NOT	BY OWNER	BY OTHER	Contract Volume	ME Ar Volume	AC ME Ar Volume	Comments
190	STEAM EXHAUST HOOD	1	EA	SHEASMASTER	3'0"		X			450 CFM			VERIFY REQ'NTS WITH MANUF. SHOP DWGS
191	EXHAUST FAN	1	EA	SHEASMASTER	CUSTOM		X						OR EXHAUST HOOD 100
192	EXHAUST HOOD (MAIN COOKLINE)	1	EA	SHEASMASTER	3'0"		X			1900 CFM	1200 CFM	300 CF	VERIFY REQ'NTS WITH MANUF. SHOP DWGS
193	EXHAUST FAN	1	EA	SHEASMASTER	CUSTOM		X						OR EXHAUST HOOD 154
194	EXHAUST HOOD (MAIN COOKLINE)	1	EA	SHEASMASTER	3'0"		X			1600 CFM	1200 CFM	300 CF	VERIFY REQ'NTS WITH MANUF. SHOP DWGS
195	EXHAUST FAN	1	EA	SHEASMASTER	CUSTOM		X						OR EXHAUST HOOD 152
196	EXHAUST HOOD (MAIN COOKLINE)	1	EA	SHEASMASTER	3'0"		X			1670 CFM	800 CFM	300 CF	VERIFY REQ'NTS WITH MANUF. SHOP DWGS
197	EXHAUST FAN	1	EA	SHEASMASTER	CUSTOM		X						OR EXHAUST HOOD 158
198	EXHAUST HOOD (MAIN COOKLINE)	1	EA	SHEASMASTER	3'0"		X			1300 CFM	300 CFM	300 CF	VERIFY REQ'NTS WITH MANUF. SHOP DWGS
199	EXHAUST FAN	1	EA	SHEASMASTER	CUSTOM		X						OR EXHAUST HOOD 162
200	SUPPLY FAN	1	EA	SHEASMASTER	CUSTOM		X						OR EXHAUST HOOD 238
201	CONDENSATE EXHAUST HOOD	1	EA	SHEASMASTER	CUSTOM		X			1900 CFM			VERIFY REQ. W/ MANUF. SHOP DWGS
202	EXHAUST FAN	1	EA	SHEASMASTER	CUSTOM		X						OR EXHAUST HOOD 238



**FOODSERVICE EQUIPMENT BUILDING CONDITIONS PLAN**  
 FS104 1/4" = 1'-0" \*\*REFER TO MECHANICAL DRAWINGS FOR ADDITIONAL EXHAUST HOOD DETAILS  
 \*\*REFER TO SHEET FS401 FOR ADDITIONAL WALK-IN COOLER/FREEZER DETAILS



**Mark S. Salopek, LLC**  
 3638 West Galloway Drive  
 Richmond, OH 44286  
 330.572.2112 330.572.2102

**BLOOMIN BRANDS**  
**HIALEAH, FL - OUTBACK STEAKHOUSE**  
 1751 W 48TH STREET  
 HIALEAH, FLORIDA 33012

SHEET ISSUE:  
 OUT TO PERMIT: 3/21/19

PRINCIPAL IN CHARGE: MS  
 PROJECT ARCHITECT: MS  
 DRAWN BY: TDD  
**SHEET TITLE**  
**FOODSERVICE BLDG. CONDITIONS/HOLD-TO-DIMENSIONS**  
 PROJ. NO. 2018201.29

**FS104**