

GENERAL NOTES

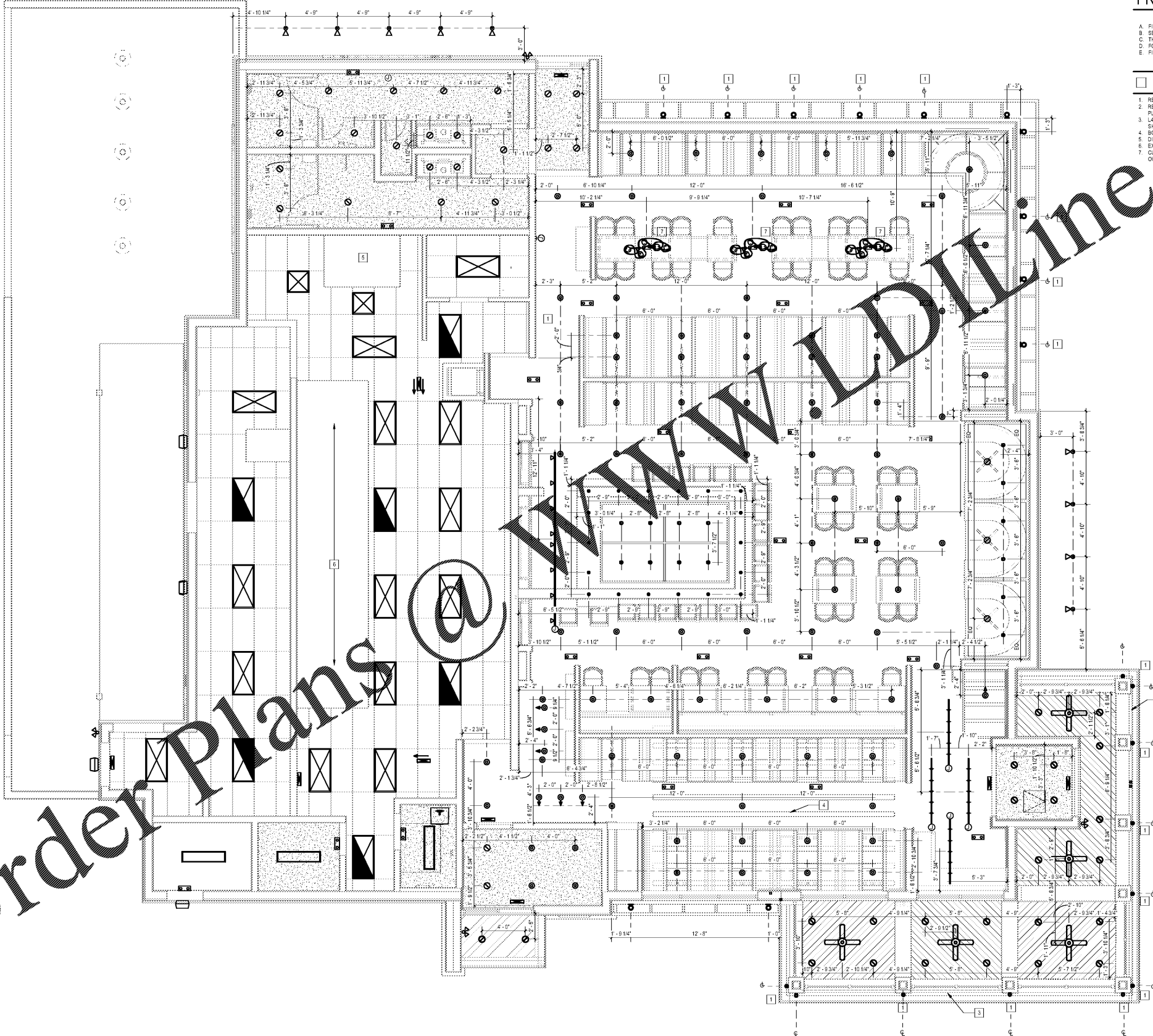
- A. DIMENSIONS ON THIS SHEET ARE FROM FACE OF FINISH TO CENTERLINE OF LIGHT FIXTURE. GENERAL CONTRACTOR & ELECTRICAL CONTRACTOR TO COORDINATE LIGHT LOCATIONS WITH SEATING LAYOUT REFER TO SHEET 101; PENDANT LIGHTS OVER TABLES ARE TO BE CENTERED ON TABLE.
- B. PAINT ALL EXPOSED PIPING CONDUIT PT-03.
- C. VERIFY LOCATION HVAC FIXTURES WITH MECHANICAL DRAWINGS.
- D. SPRINKLER HEADS ARE NOT SHOWN ON THIS PLAN.
- E. CAULK CEILING GRID ANGLE TO FRP IN KITCHEN WITH CLEAR SILICONE.
- F. ALL DECOR LIGHTS SHALL BE POSITIONED 30" OFF WALL TO CENTER OF FIXTURE, UNLESS NOTED OTHERWISE. REFER TO ARCHITECTURAL DETAIL SHEETS FOR DETAILING.
- G. ALL LIGHTING DIMENSIONS ARE TO BE COORDINATED IN THE FIELD WITH AS BUILT CONDITIONS.
- H. FOR PENDANT LIGHT MOUNTING HEIGHTS, REFER TO SHEET E301.
- I. REFER TO ARCHITECTURAL DETAIL SHEETS FOR DETAILING.

PRIORITY OF CONSTRUCTION

- A. FIRST DUCTWORK
- B. SECOND - FIRE PROTECTION PIPING
- C. THIRD - ANY PIPING WITH SLOPE REQUIREMENTS
- D. FOURTH - OTHER PIPING
- E. FIFTH - CONDUIT

SHEET KEYNOTES

- 1. REFER TO ARCHITECTURAL ELEVATION SHEETS FOR FIXTURE MOUNTING HEIGHT.
- 2. REFER TO ELEVATION DETAILING SHEETS FOR SPECIFIC FIXTURE AND PLACEMENT OF TOWER LED.
- 3. LASED TAPE LIGHT AT HUBBLE FASCIA REFER TO ARCHITECTURAL DETAIL SHEETS FOR DETAILING.
- 4. BOTTOM OF KITCHEN ISLAND IS A.F.F.
- 5. DISHWASHER HOOD REFER TO ARCHITECTURAL PLAN.
- 6. EXHAUST HOODS REFER TO MECHANICAL DRAWINGS.
- 7. CUSTOM FIXTURE BY OWNER MOUNTED @ 8'-0" A.F.F. COORDINATE LOCATION WITH OWNER.



Order Plans @ www.dline.com



BLOOMIN BRANDS
OUTBACK STEAKHOUSE
 1751 W 49TH STREET
 HALEAH, FLORIDA 33012

SHEET ISSUE
 OUT TO PERMIT:

PRINCIPAL IN CHARGE: JC
 PROJECT ARCHITECT: MS
 DRAWN BY: BM

SHEET TITLE
**LIGHTING
 DIMENSION PLAN**

SHEET NO. PROJ. NO.
 E101A 2018231 50

ELECTRICAL LIGHTING DIMENSION PLAN
 1/4" = 1'-0"