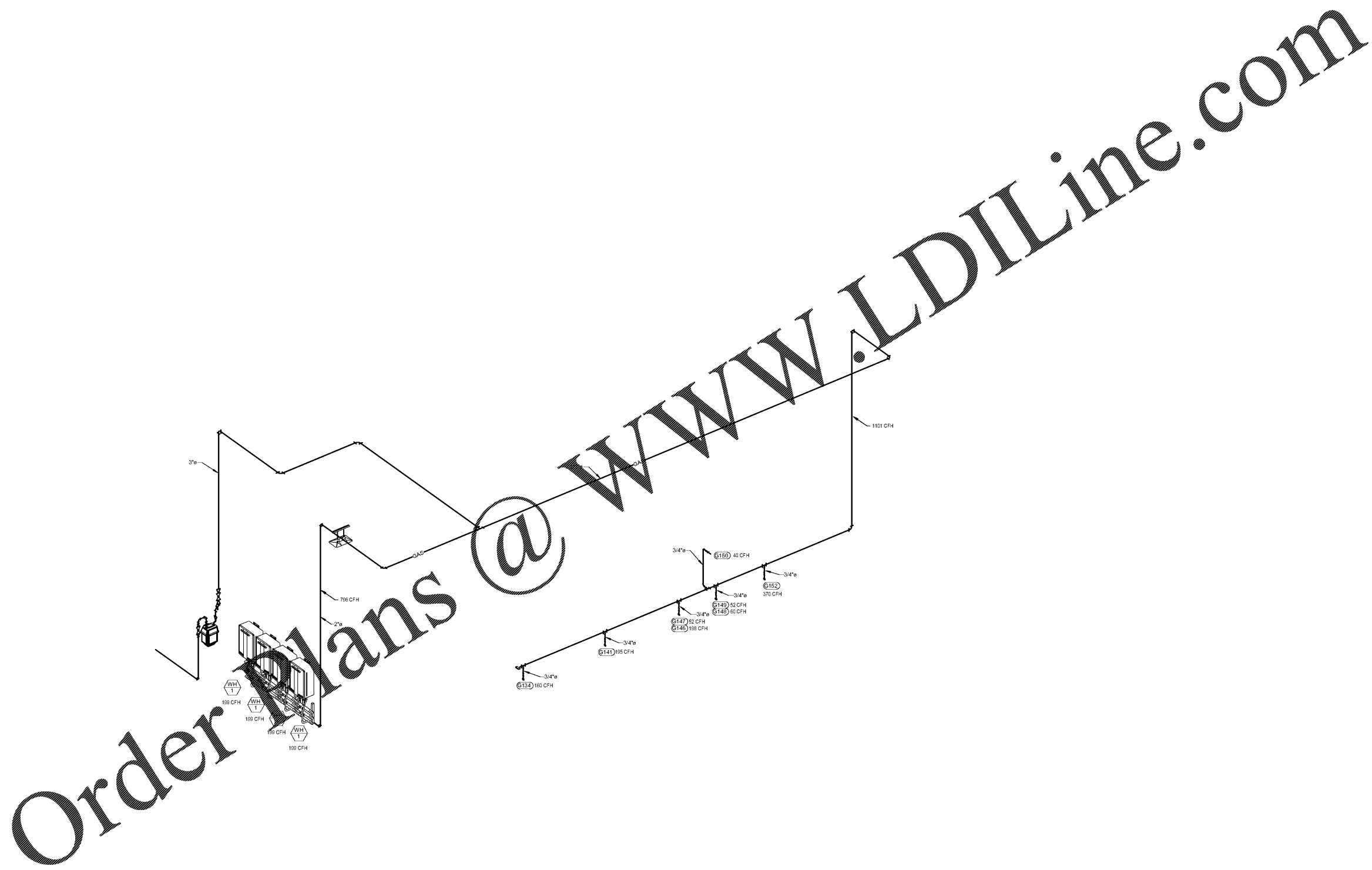


CONNECTED GAS LOAD SCHEDULE OUTBACK STEAKHOUSE					
MARK	DESCRIPTION	CONN SIZE	QTY	CFH INPUT EACH	CFH TOTAL
134	8" GRODLE	3/4"	1	134	134
141	8" CHARBROILER	3/4"	1	135	135
146	36" SIX BURNER RANGE	1"	1	198	198
147	CONVECTION OVEN	1"	1	52	52
148	24" GRODLE AND 12" WOK TOP	1"	1	60	60
149	CONVECTION OVEN	1"	1	52	52
150	48" CHEESE MELTER	3/4"	1	40	40
152	FRYER BATTERY W/FILTER	1-1/4"	1	370	370
COOKING LOAD CFH TOTAL					1101
WH-1	GAS FIRED WATER HEATER	3/4"	4	193	796
WATER HEATER LOAD CFH TOTAL					796
TOTAL CONNECTED GAS LOAD CFH					1897

- GAS PIPING NOTES**
- GAS PIPING SIZED FOR THE TOTAL CONNECTED LOAD LESS THAN 150 FEET FROM METER TO FARTHEST CONNECTION, 7" WATER COLUMN (11" W.C./L.P. GAS), 0.6 SPECIFIC GRAVITY, 0.5" PRESSURE LOSS.
 - GAS PIPING SHALL BE BLACK STEEL OR AS PERMITTED BY CODE.
 - GAS PIPING CONNECTIONS SHALL BE THREADED UNLESS OTHERWISE REQUIRED BY CODE.
 - EXTERIOR GAS PIPING SHALL RECEIVE ONE COAT EACH OF A RUST AND WEATHER RESISTANT PRIMER AND TOP COAT. COORDINATE WITH ARCHITECT FOR COLOR.
 - ALL GAS BURNING EQUIPMENT SHALL BE INSTALLED PER NFPA 96: NFPA 96A (L.P.G.) OR NFPA 96B (COMMERCIAL COOKING EQUIPMENT).
 - ALL EXPOSED GAS PIPING AT COOK LINE SHALL BE PAINTED YELLOW.



1 GAS PIPING ISOMETRIC
P203 NTS



BLOOMING BRANDS
HIALEAH, FL - OUTBACK STEAKHOUSE
 1751 W 49TH STREET
 HIALEAH, FLORIDA 33012

SHEET ISSUE
 OUT TO PERMIT: 03/21/19

PRINCIPAL IN CHARGE: JC
 PROJECT ARCHITECT: MS
 DRAWN BY: TH

SHEET TITLE
GAS RISER DIAGRAM

SHEET NO. PROJ. NO.
 2018231 20

P203