

KITCHEN HOODS (HOOD MAKE-UP AIR FANS AND EXHAUST FANS) ARE PROVIDED BY THE OWNER/KITCHEN DESIGNER. QUESTIONS REGARDING INSTALLATION REQUIREMENTS OR COORDINATION SHALL BE DIRECTED TO DAVID BREIDT WITH GREASEMASTER, (888) 909-9233 X13.

EXHAUST FAN INFORMATION - Job#3606951

FAN UNIT NO.	TAG	FAN UNIT MODEL #	CFM	ESP.	RPM	H.P.	B.H.P.	VOLT	FLA	DISCHARGE VELOCITY	WEIGHT (LBS.)	SONES	
1	EF-1 Griddle	GM14-HFA	1350	1.000	1450	1.000	0.6580	3	208	3.4	427 FPM	151	13.4
2	EF-2 Broiler	GM-RE15DD	1870	1.500	1724	2.000	1.2780	3	208	6.1	1374 FPM	283	26
3	EF-3 Range	GM14-FA	1600	1.000	1151	0.750	0.4900	3	208	2.5	506 FPM	159	12.6
4	EF-4 Fryer	GM14-FA	1933	1.000	1212	0.750	0.5920	3	208	2.5	612 FPM	159	13.2
5	EF-5	GMDU30H	1050	0.400	1540	0.250	0.1790	1	115	3.8	520 FPM	108	12.3
6	EF-6	GMDR30H	450	0.375	1018	0.250	0.0610	1	115	3.8		96	5.8
7	EF-7	CFA-S110-GM	100	0.125	905	0.042	0.0320	1	115	0.3		12	3.3
8	EF-8-Potato Steamer	GMDU30H	450	0.500	1142	0.250	0.0730	1	115	3.8	223 FPM	105	6.9

CONDENSER DETAILS

FAN UNIT NO.	TAG	FAN UNIT MODEL #	CONDENSER NO.	TONNAGE	VOLTAGE	PHASE	FREQUENCY	MCA	RLA	MAX FUSE SIZE	MIN. WIRE SIZE	SEER
9	MUA-1	GM2-15-MPU	1	3	208-230	3 PHASE	60 Hz	14.5 Amps	11.9 Amps	20 Amps	14 AWG	14
			2	5	208-230	3 PHASE	60 Hz	21.4 Amps	17.4 Amps	30 Amps	12 AWG	14

MUA FAN INFORMATION - Job#3606951

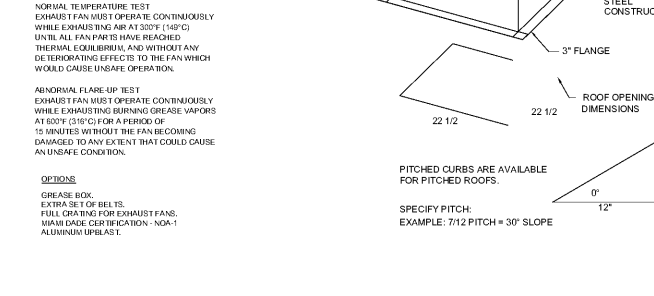
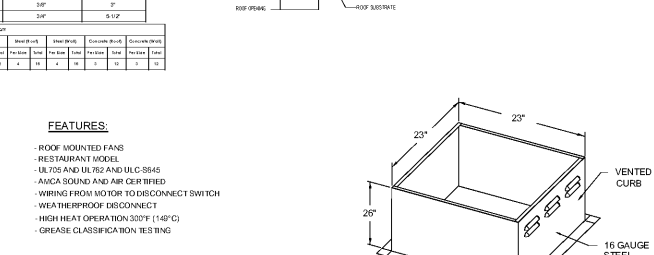
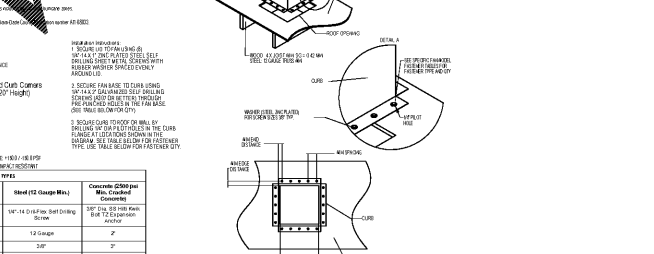
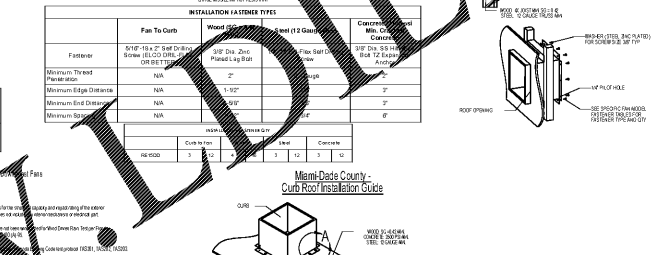
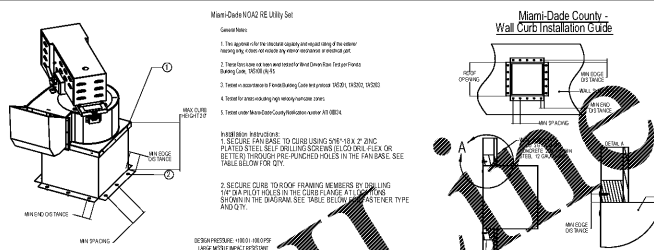
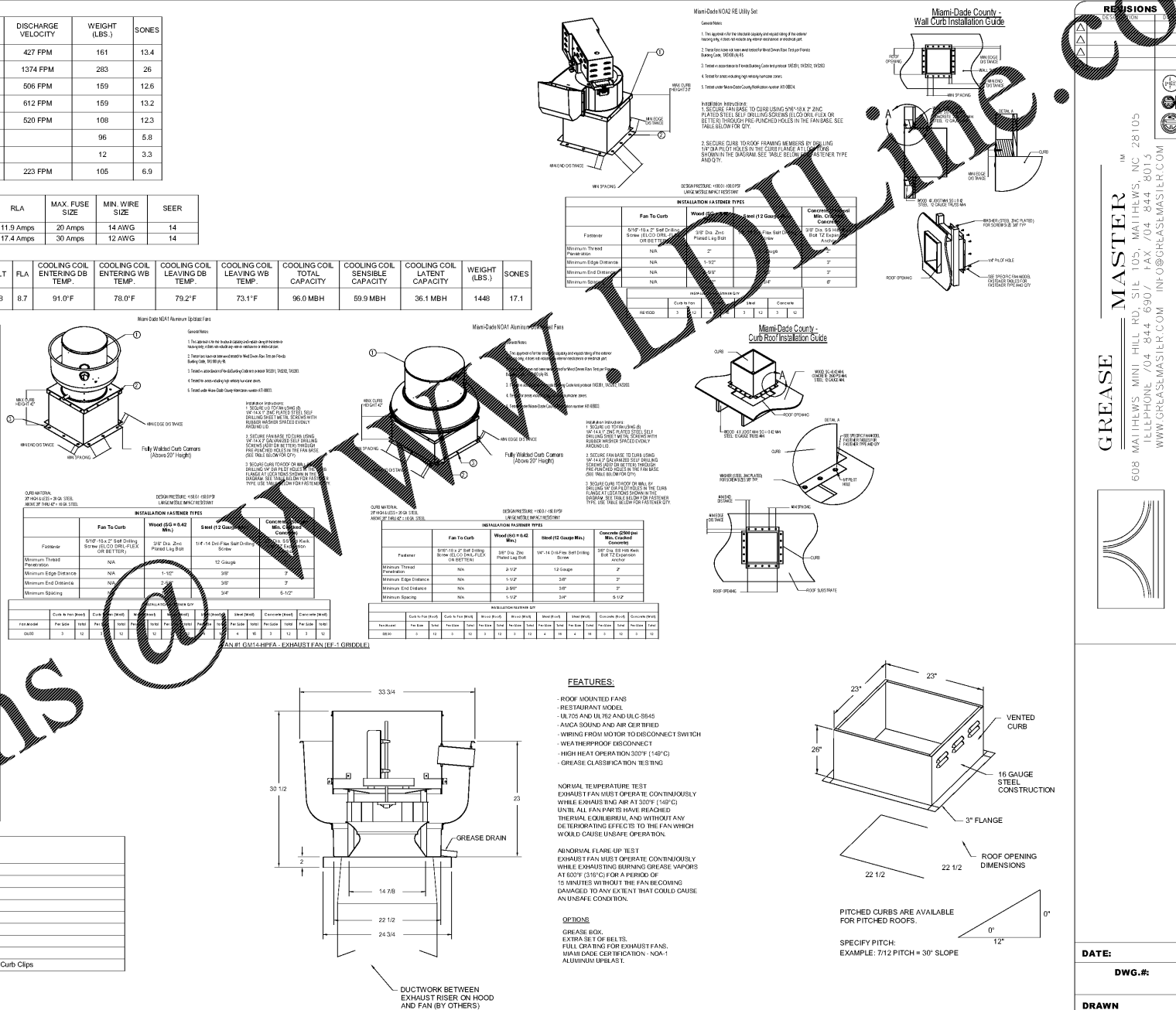
FAN UNIT NO.	TAG	FAN UNIT MODEL #	HOUSING	MIN CFM	DESIGN CFM	ESP.	RPM	H.P.	B.H.P.	VOLT	FLA	COOLING COIL ENTERING DB TEMP.	COOLING COIL LEAVING WB TEMP.	COOLING COIL LEAVING DB TEMP.	COOLING COIL LEAVING WB TEMP.	COOLING COIL TOTAL CAPACITY	COOLING COIL LATENT CAPACITY	COOLING COIL SENSIBLE CAPACITY	WEIGHT (LBS.)	SONES		
9	MUA-1	GM2-15-MPU	G15-PB	A2	-	4811	0.500	803	3.000	2,1610	3	208	8.7	91.0°F	78.0°F	79.2°F	73.1°F	96.0 MBH	59.9 MBH	36.1 MBH	1448	17.1

FAN OPTIONS

FAN UNIT NO.	TAG	OPTION (Qty. - Descr.)
1	EF-1 Griddle	1 - Grease Box 1 - Extra Set of Belts 1 - Full Crating For Exhaust Fans 1 - Miami Dade Certification - NOA-1 Aluminum Upblast 1 - Full Crating For Exhaust Fans 1 - Utility Set Grease Cup
2	EF-2 Broiler	1 - RE15 - Rain Cap Assembly - Includes Hardware And Gasket. 1 - Miami Dade Certification - NOA-2 RE Utility Set 1 - Grease Box
3	EF-3 Range	1 - Extra Set of Belts 1 - Full Crating For Exhaust Fans 1 - Miami Dade Certification - NOA-1 Aluminum Upblast 1 - Grease Box
4	EF-4 Fryer	1 - Extra Set of Belts 1 - Full Crating For Exhaust Fans 1 - Miami Dade Certification - NOA-1 Aluminum Upblast 1 - Grease Box
5	EF-5	1 - Full Crating For Exhaust Fans 1 - Miami Dade Certification - NOA-1 Aluminum Upblast 1 - 115-BDD Damper
6	EF-6	1 - Full Crating For Exhaust Fans 1 - Miami Dade Certification - NOA-1 Aluminum Downblast 11.
7	EF-7	1 - Roof Cap - Curb Mounted, Aluminum, Base is 15.25" sq' 1 - Fan Control - 3 Amp White Speed Control for CFA Ceiling Fan 1 - Full Crating For Exhaust Fans
8	EF-8-Potato Steamer	1 - SCR-11 Bird Screen 1 - 115-BDD Damper 1 - Miami Dade Certification - NOA-1 Aluminum Upblast 1 - Full Crating For Untempered Fans 1 - Extra Set of Belts 1 - Gravity Backdraft Damper for Size 2 Housing 1 - 8 Ton 2 Circuit (3/5) Modular Packaged Cooling Option for Size 2 MUA (2,900 to 4,800 cfm), 208V/230V, 3 phase, Cooling Thermostat or Programmable Stat Required for Proper Operation.
9	MUA-1	1 - Mod Package Unit IAC Controls for Untempered Fans 1 - Condenser Support for Size 2 Mod Package Unit 1 - Size 2 Cooling Coil Moisture Eliminator Option - increases coil face velocity to increase to 650 fpm. Increases cooling coil max. cfm to 6000 cfm. 1 - Miami Dade Certification - NOA-2 Supply

CURB ASSEMBLIES

NO.	ON FAN	TAG	WEIGHT	SIZE
1	#1	EF-1 Griddle	70 LBS	23,000"W x 23,000"L x 26,000"H Vented Hinged 16 Gauge
2	#2	EF-2 Broiler	53 LBS	23,000"W x 23,000"L x 20,000"H Vented 16 Gauge
3	#3	EF-3 Range	70 LBS	23,000"W x 23,000"L x 26,000"H Vented Hinged 16 Gauge
4	#4	EF-4 Fryer	75 LBS	23,000"W x 23,000"L x 26,000"H Vented Hinged 16 Gauge
5	#5	EF-5	19 LBS	19,500"W x 19,500"L x 18,000"H
6	#6	EF-6	18 LBS	19,500"W x 19,500"L x 14,000"H
7	#7	EF-7	24 LBS	14,500"W x 14,500"L x 12,000"H
8	#8	EF-8	20 LBS	19,500"W x 19,500"L x 18,000"H
9	#9	MUA-1	20 LBS	31,000"W x 121,000"L x 20,000"H Insulated 16 Gauge MPU Curb Clips



REVISIONS

NO.	DATE	DESCRIPTION
1		
2		
3		
4		
5		
6		
7		
8		
9		

GREASE MASTER
 608 MATTHEWS HILL RD. STE. 105, MATTHEWS, NC 28105
 TEL: 704-844-6900 FAX: 704-844-6901
 WWW.GREASEMASTER.COM INFO@GREASEMASTER.COM

DATE:
DWG.#:
DRAWN BY:
SCALE:
SHEET NO.

OUTBACK STEAKHOUSE®

GPD GROUP INC.
 L.L.C. # 30920

BLOOMIN BRANDS

HIALEAH, FL - OUTBACK STEAKHOUSE
 1751 W 49TH STREET
 HIALEAH, FLORIDA 33012

SHEET TITLE: HOOD DETAILS

PRINCIPAL IN CHARGE: JC
PROJECT ARCHITECT: MS
DRAWN BY: TH

SHEET NO. MH103

PROJ. NO. 2018231.20