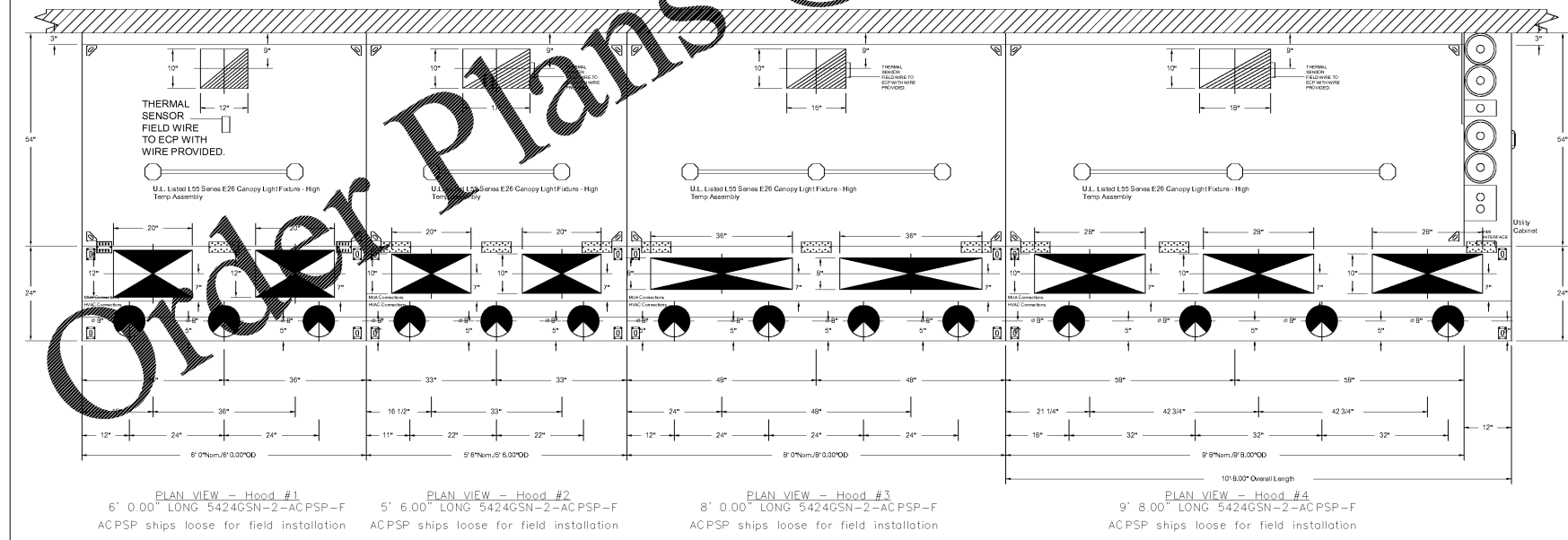
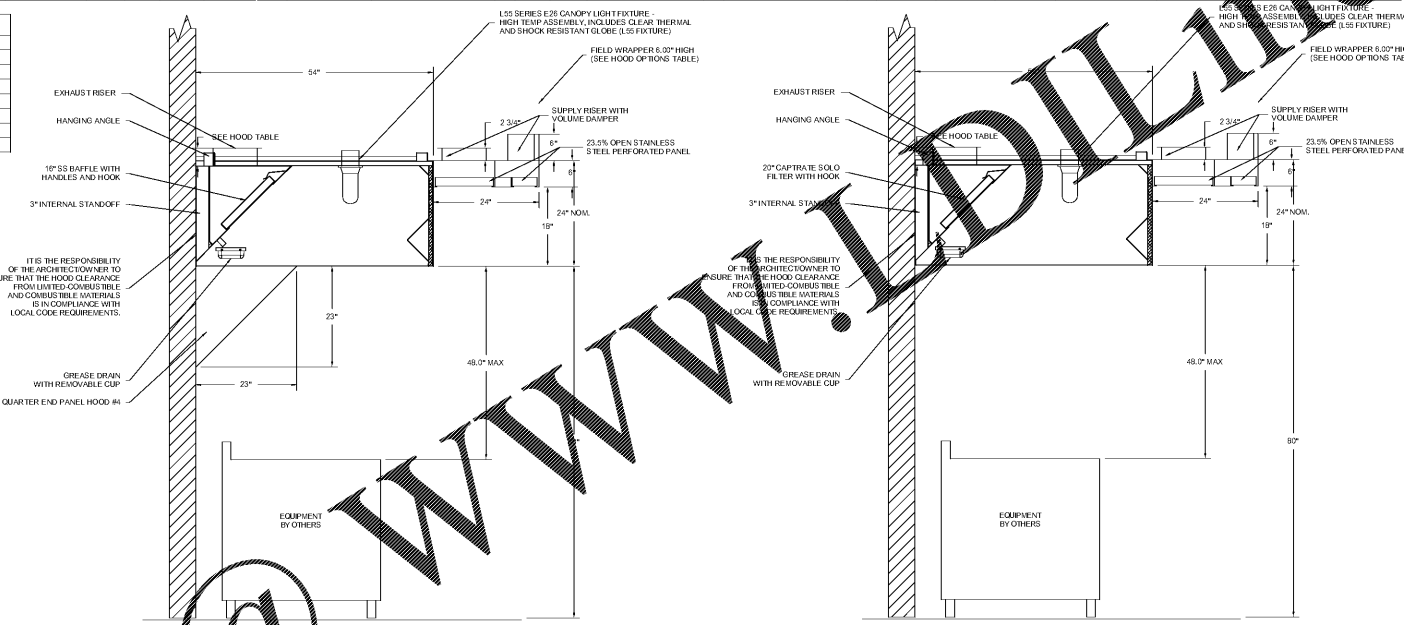


KITCHEN HOODS (HOOD MAKE-UP AIR FANS AND EXHAUST FANS) ARE PROVIDED BY THE OWNER/KITCHEN DESIGNER. QUESTIONS REGARDING INSTALLATION REQUIREMENTS OR COORDINATION SHALL BE DIRECTED TO DAVID BREIDT WITH GREASEMASTER, (888) 909-9233 X13.

HOOD INFORMATION - Job#3606951															HOOD INFORMATION																					
HOOD NO.	TAG	MODEL	LENGTH	MAX. COOKING TEMP.	TOTAL EXH. CFM	EXHAUST FLENUM (RBSERS)					MUA CFM	AC CFM	HOOD CONSTRUCTION	END TO END	ROW	QUANTITY	LOCATION	HOOD NO.	TAG	TYPE	QTY.	HEIGHT	LENGTH	EFFICIENCY @ 7 MICRONS	QTY.	TYPE	WIRE GUARD	LOCATION	SIZE	UTILITY CABINET(S)			ELECTRICAL MODEL #	SWITCHES QUANTITY	FIRE SYSTEM PIPING	HOOD WEIGHT
						WIDTH	LENG.	HEIGHT	DIA.	CFM																				VEL.	S.P.	TYPE				
1		5424 GSN-2-ACPS-P-F	6'0"	450 Dps.	1350	12"	12"	4"		1350	1620	-0.390"	950	300	430 SS Where Exposed	LEFT	ALONE			SS Baffle with Handles	4	16"	16"	30%	2	L55 Series E26	NO						YES	321 LBS		
2		5424 GSN-2-ACPS-P-F	5'6"	600 Dps.	1870	10"	11"	4"		1870	1584	-0.360"	870	300	430 SS Where Exposed	MIDDLE	ALONE			Caprete Sola Filter	4	20"	16"	98% See Filter Spec.	2	L55 Series E26	NO						YES	318 LBS		
3		5424 GSN-2-ACPS-P-F	8'0"	450 Dps.	1600	10"	15"	4"		1600	1536	-0.377"	1290	500	430 SS Where Exposed	MIDDLE	ALONE			SS Baffle with Handles	5	16"	16"	30%	3	L55 Series E26	NO					YES	406 LBS			
4		5424 GSN-2-ACPS-P-F	9'8"	450 Dps.	1933	10"	18"	4"		1933	1548	-0.424"	1701	500	430 SS Where Exposed	RIGHT	ALONE			SS Baffle with Handles	7	16"	16"	30%	3	L55 Series E26	NO	Right	12x6x24"	Amul R102	3,003.03.03.0		YES	716 LBS		
5		5424 VOS-G-REM-1	7'0"	700 Dps.	1050	11"	11"	4"		1050	1250	-0.120"	0	0	430 SS 100%	ALONE	ALONE									NO					NO	27 LBS				
6	Polabo Steamer	4824 VOS-G	3'0"	700 Dps.	450	7"	7"	4"		450	1322	-0.070"	0	0	430 SS 100%	ALONE	ALONE	1 FAN								NO						NO	0 LBS			

HOOD NO.	TAG	OPTION
1		FIELD WRAPPER 6.00" High Front, Left
		SENSOR-CV
2		FIELD WRAPPER 6.00" High Front
3		FIELD WRAPPER 6.00" High Front
4		FIELD WRAPPER 6.00" High Front, Right
5		RIGHT QUARTER END PANEL 23" Top Width, 0" Bottom Width, 0" High 430 SS
6	Polabo Steamer	FIELD WRAPPER 18.00" High Front, Left, Right

PERFORATED SUPPLY FLENUM(S)											
HOOD NO.	TAG	POS.	LENGTH	WIDTH	HEIGHT	RBSERS					
						TYPE	WIDTH	LENG.	DIA.	CFM	S.P.
1		Front	72"	24"	6"	MUA	12"	20"	475	0.125"	
						MUA	12"	20"	475	0.125"	
						AC	8"	100	0.032"		
						AC	8"	100	0.032"		
2		Front	66"	24"	6"	MUA	10"	20"	435	0.120"	
						MUA	10"	20"	435	0.120"	
						AC	8"	100	0.032"		
						AC	8"	100	0.032"		
3		Front	96"	24"	6"	MUA	8"	36"	645	0.180"	
						MUA	8"	36"	645	0.180"	
						AC	8"	125	0.040"		
						AC	8"	125	0.040"		
4		Front	128"	24"	6"	MUA	10"	28"	567	0.150"	
						MUA	10"	28"	567	0.150"	
						MUA	10"	28"	567	0.150"	
						AC	8"	125	0.040"		



GREASE MASTER HOODS ARE BUILT IN COMPLIANCE WITH UL 710 AND NFPA 96 AND ARE RECOGNIZED BY ONE OR MORE OF THE FOLLOWING:

ETL SANITATION LISTED
ETL LISTED FILE# 3054804-001

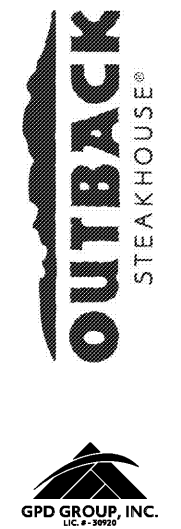
www.dolline.com

GREASE MASTER
608 MATTHEWS MINI HILL RD, SILE 105, MATTHEWS, NC 28105
TEL: 704.844.6907 FAX: 704.844.8013
WWW.GREASEMASTER.COM INFO@GREASEMASTER.COM

REVISIONS

NO.	DESCRIPTION	DATE
1	ISSUE	

DATE: _____ DWG.#: _____
DRAWN BY: _____ SCALE: _____
SHEET NO. _____



BLOOMING BRANDS
HIALEAH, FL - OUTBACK STEAKHOUSE
1751 W 49TH STREET
HIALEAH, FLORIDA 33012

SHEET ISSUE
OUT TO PERMIT: 03/21/19

PRINCIPAL IN CHARGE: JC
PROJECT ARCHITECT: MS
DRAWN BY: TH

SHEET TITLE: HOOD DETAILS

SHEET NO. _____ PROJ. NO. 2018231.20

MH101