

NOTE:
1. ALL KITCHEN AND BACK OF HOUSE WALLS SHALL HAVE FRP FINISH OVER SHEATHING U.N.O.

NOTE:
1. ALL KITCHEN AND BACK OF HOUSE WALLS SHALL HAVE FRP FINISH OVER SHEATHING U.N.O.

NOTE: ALL KITCHEN AND BACK OF HOUSE WALLS TO HAVE FRP FINISH OVER SHEATHING IN LIEU OF GYP BD

NOTE:
1. PROVIDE SOUND BATT INSULATION IN RESTROOM WALLS.

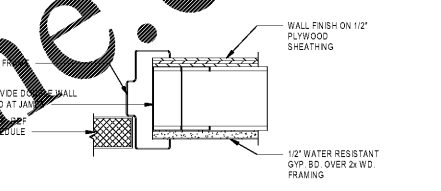
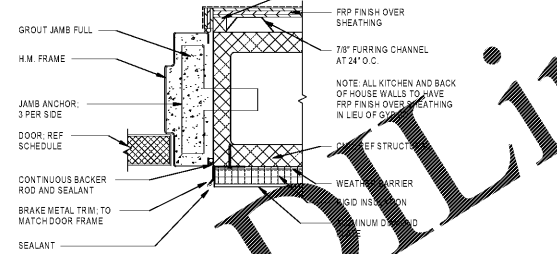
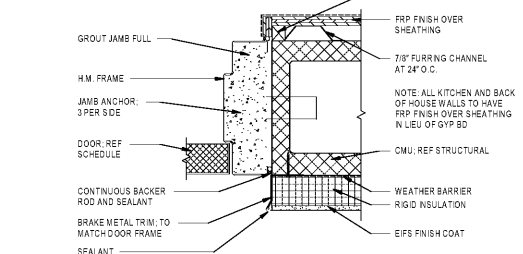
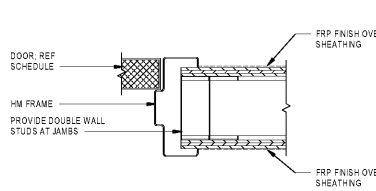
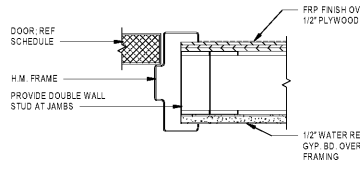
D1 DOOR HEAD - INTERIOR
3\"/>

D2 DOOR HEAD - INTERIOR
3\"/>

D3 DOOR HEAD AT MECHANICAL - CMU
3\"/>

D4 DOOR HEAD AT RECEIVING - CMU
3\"/>

D5 DOOR HEAD - INTERIOR
3\"/>



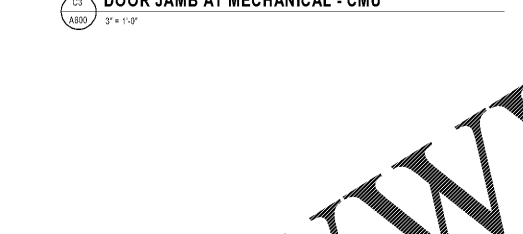
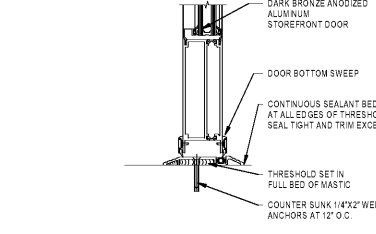
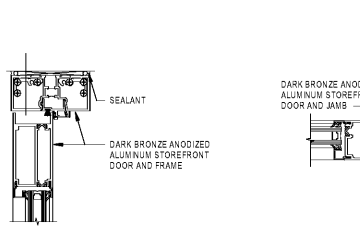
C1 DOOR JAMB - INTERIOR
3\"/>

C2 DOOR JAMB - INTERIOR
3\"/>

C3 DOOR JAMB AT MECHANICAL - CMU
3\"/>

C4 DOOR JAMB AT RECEIVING - CMU
3\"/>

C5 DOOR JAMB - INTERIOR
3\"/>



B1 DOOR HEAD - STOREFRONT
3\"/>

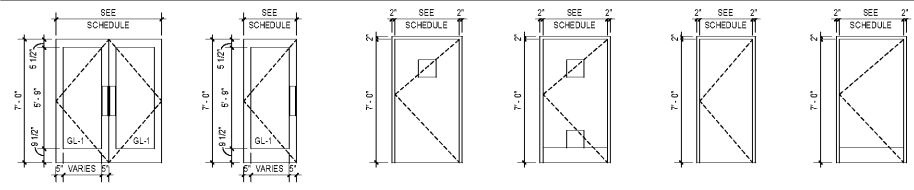
B2 DOOR JAMB - STOREFRONT
3\"/>

B3 DOOR THRESHOLD - STOREFRONT
3\"/>

DOOR SCHEDULE													
DOOR NO.	LOCATION	DOOR				FRAME				DETAILS			REMARKS
		WIDTH	HEIGHT	THK.	TYPE	RATING	MATERIAL	HARDWARE TYPE	TYPE	MATERIAL	HEAD	JAMB	
100	VESTIBULE	6'-0"	7'-0"	0'-1 3/4"	A		STOREFRONT	HW40	ALUM	B1A800	B2A800	SEE BLDG FOR THRESHOLD	
101	ENTRY/CUSTOMER WAITING	6'-0"	7'-0"	0'-1 3/4"	A		STOREFRONT	HW60	ALUM	B1A800	B2A800	VON DUPRN	
102	TAKE-AWAY	3'-0"	7'-0"	0'-1 3/4"	B		STOREFRONT	HW4	ALUM	B1A800	B2A800	SEE BLDG FOR THRESHOLD	
103	TAKE-AWAY	3'-0"	7'-0"	0'-1 3/4"	B		STOREFRONT	HW60	ALUM	B1A800	B2A800	VON DUPRN	
104	STORAGE	2'-6"	7'-0"	0'-1 3/4"	K		WOOD	HW4	HM	B1A800	B2A800	VON DUPRN	
105	DINING	3'-0"	7'-0"	0'-1 3/4"	B		STOREFRONT	HW11	ALUM	B1A800	B2A800	SEE BLDG FOR THRESHOLD	
106	WOMEN'S RESTROOM	3'-0"	7'-0"	0'-1 3/4"	E		WOOD	HW63	HM	B1A800	B2A800	VON DUPRN	
107	MEN'S RESTROOM	3'-0"	7'-0"	0'-1 3/4"	E		WOOD	HW63	HM	B1A800	B2A800	VON DUPRN	
108	RECEIVING AREA	3'-0"	7'-0"	0'-1 3/4"	D		HM	HW57	HM	B1A800	B2A800	CAJAN	
109	MECH ROOM	3'-0"	7'-0"	0'-1 3/4"	F		HM	HW58	HM	B1A800	B2A800	CAJAN	DOOR AND FRAME PAINT PT-70
110	OFFICE	2'-6"	7'-0"	0'-1 3/4"	E		WOOD	HW65	HM	B1A800	B2A800	VON DUPRN	
111	EMPLOYEE RESTROOM	3'-0"	7'-0"	0'-1 3/4"	E		WOOD	HW64	HM	B1A800	B2A800	VON DUPRN	
112	DUMPSTER ENCLOSURE	3'-0"	7'-0"	0'-1 3/4"	C		HM	HW57	HM	B1A800	B2A800	VON DUPRN	

DOOR HARDWARE SCHEDULE													
DOOR NO.	LOCATION	DOOR				FRAME				DETAILS			REMARKS
		WIDTH	HEIGHT	THK.	TYPE	RATING	MATERIAL	HARDWARE TYPE	TYPE	MATERIAL	HEAD	JAMB	
HARDWARE SET HW03 SINGLE 3'-0" X 7'-0" HOLLOW METAL DOOR/HOLLOW METAL FRAME PUBLIC RESTROOM (3) HEAVY DUTY HINGES 8B1168 4 1/2" X 4 1/2" US10A641 HAGER (1) PUSH PLATE 54 4" X 16" 613 BURNS (1) PULL X PLATE 8426C 2" X 16" PLATE X 1/2" CTC PULL 696 LCN (1) CLOSER 4840XP RW PA X TB-SRT 613 LCN (3) SLIDERS 1229A 613 TRMCO (1) KICK PLATE 873 34" 613 BURNS (1) WALL STOP WS 407 CVX 613 IVES (1) DOOR STOP FS 455 US230 IVES													
HARDWARE SET HW04 SINGLE 3'-0" X 7'-0" HOLLOW METAL DOOR/HOLLOW METAL FRAME EMPLOYEE RESTROOM (3) HEAVY DUTY HINGES 8B1168 4 1/2" X 4 1/2" 652 HAGER (1) PRIVACY SET AL489 54" 626 SCHLAGE (1) CLOSER X STOP 4840XP RW PA X TB-SRT 613 LCN (3) SLIDERS 1229A 613 TRMCO (1) SIGN (M-W-H-C) HS-9999 613 BLACK DON-JO													
HARDWARE SET HW05 SINGLE 3'-0" X 7'-0" HOLLOW METAL DOOR/HOLLOW METAL FRAME OFFICE (3) HEAVY DUTY HINGES 8B1168 4 1/2" X 4 1/2" 652 HAGER (1) STOREROOM LOCK X IC AL489 54" 626 SCHLAGE (1) CLOSER 4840XP RW PA X TB-SRT 613 LCN (1) SWEEP 3152N-40" 628 PEMKO (3) SLIDERS 1229A 613 TRMCO (1) THRESHOLD BY FLOORING CONTRACTOR 630 IVES (1) WALL STOP WS 407 CVX 613 IVES													
HARDWARE SET HW11 SINGLE 3'-0" X 7'-0" HOLLOW METAL DOOR/HOLLOW METAL FRAME VESTIBULE (3) HEAVY DUTY HINGES 8B1199 4 1/2" X 4 1/2" X NRP US10B613 HAGER (1) EXIT DEVICE 3547AE0 313 VON DUPRN (1) PULL X PLATE 29-022 (S123 KEYWAY) 696 SCHLAGE (1) CLOSER X STOP 4840XP RW PA X TB-SRT 613 LCN (1) SWEEP BY DOOR SUPPLIER DKK BRZ (1) CUSH X SPRING STOP 4840XP 3-CUSH X TB-SRT 696 LCN (1) BLADE STOP SPACER 4840XP-30 (AS REQ'D FOR FRAME) 696 LCN (1) DROP PLATE 4840XP-18PA (AS REQ'D FOR DOOR) 696 LCN (1) THRESHOLD 1804DNB-94" 696 LCN (1) SWEEP 2710-32" DBZ PEMKO (1) WEATHERSTRIP 196QDNB-38" DBZ PEMKO BY DOOR MANUFACTURER													
HARDWARE SET HW44 SINGLE 3'-0" X 7'-0" HOLLOW METAL DOOR/HOLLOW METAL FRAME RECEIVING AREA / KITCHEN (1) CONTINUOUS HINGES 112 HD X 83" (180 DEG) US230 IVES (1) EXIT DEVICE 3547AE0 313 VON DUPRN (1) HM CYLINDER 29-022 (S123) 628 SCHLAGE (1) CLOSER X H O & STOP 4840XP 3-CUSH X TB-SRT 696 LCN (1) SWEEP 3152N-40" 628 PEMKO (1) DOOR ALARM MONITOR 4300 629 SECURITY PRODUCTS (1) WEATHERSTRIP 303AV 1/42" 284" AL PEMKO (1) THRESHOLD 2296-42" AL PEMKO (1) ARMOR PLATE 38" X 48" 630 BURNS													
HARDWARE SET HW45 SINGLE 3'-0" X 7'-0" HOLLOW METAL DOOR/HOLLOW METAL FRAME VESTIBULE (CUSTOMER WAITING) (3) FULL MORTISE HINGES 8B1199 4 1/2" X 4 1/2" X NRP US10B613 HAGER (1) EXIT DEVICE 3547AE0 313 VON DUPRN (1) PULL X PLATE 29-022 (S123) 696 SCHLAGE (1) CLOSER X SPRING STOP 4840XP 3-CUSH X TB-SRT 696 LCN (1) SWEEP BY DOOR SUPPLIER DKK BRZ (1) CUSH X SPRING STOP 4840XP-30 (AS REQ'D FOR FRAME) 696 LCN (1) BLADE STOP SPACER 4840XP-18PA (AS REQ'D FOR FRAME) 696 LCN (1) DROP PLATE 4840XP-18PA (AS REQ'D FOR DOOR) 696 LCN (1) THRESHOLD 2710-35" DBZ PEMKO (1) SWEEP 196QDNB-38" DBZ PEMKO BY DOOR MANUFACTURER													
HARDWARE SET HW57 SINGLE 3'-0" X 7'-0" HOLLOW METAL DOOR/HOLLOW METAL FRAME DUMPSTER ENCLOSURE (1) CONTINUOUS HINGES 112 HD X 83" (180 DEG) DK BRZ IVES (1) EXIT DEVICE 96-0T 315 VON DUPRN (1) PULL 9600T 315 VON DUPRN (3) SLIDERS 1229A BLACK TRMCO													
HARDWARE SET HW58 SINGLE 3'-0" X 7'-0" ALUMINUM DOOR/ALUMINUM FRAME MECHANICAL ROOM (3) HEAVY DUTY HINGES 8B1199 4 1/2" X 4 1/2" X NRP US10B613 HAGER (1) DEADLOCK/LATCH COMBO MS 8900 DK BRZ 440 KAWNEER (1) CYLINDER GUARD CO-12 DK BRZ 440 KAWNEER (1) CLOSER W/HOLD OPEN 1991 DK BRZ 440 NORTON (1) SWEEP 196QDNB-38" DBZ PEMKO (1) WEATHERSTRIP BY DOOR MANUFACTURER													
HARDWARE SET HW65 PAIR 3'-0" X 7'-0" ALUMINUM DOORS/ALUMINUM FRAME VESTIBULE (CUSTOMER WAITING) (6) FULL MORTISE HINGES 8B1199 4 1/2" X 4 1/2" X NRP US10B613 HAGER (2) PULL X PLATE 29-022 (S123) 696 SCHLAGE (2) CLOSER X SPRING STOP 4840XP 3-CUSH X TB-SRT 696 LCN													

DOOR TYPES



DOOR NOTES

- ALL DECORATIVE WOOD DOORS AND DOOR HARDWARE FROM THE PANEL CENTER. CONTACT: MARK GAINER (614) 274-6000
- PROVIDE DOOR STOPS AT ALL DOORS AND WALL BUMPERS WHERE REQUIRED AGAINST ADJACENT WALL
- ALL WET ROOM AND DOOR FRAMES TO BE 18 GA GALV UNO
- ALL HM DOORS TO BE 18 GA GALV FUSH-IN INSULATED UNO
- REF FINISH SCHEDULE FOR PAINT AND STAIN COLORS AND BRANDS
- ALL DOOR CLOSERS SHALL BE THRU-SOLETS
- ALL SPACERS IN ALUMINUM STOREFRONT GLASS SHALL BE BLACK COLOR
- GO TO INSTALL "HOUSE PORT DOOR" IN RECEIVING DOOR. SUPPLIED BY FLORIDA STAINLESS FABRICATORS, INC. CONTACT: STEVE ADREN 407 971-8288 SAMRHEIN@FSMFG.COM