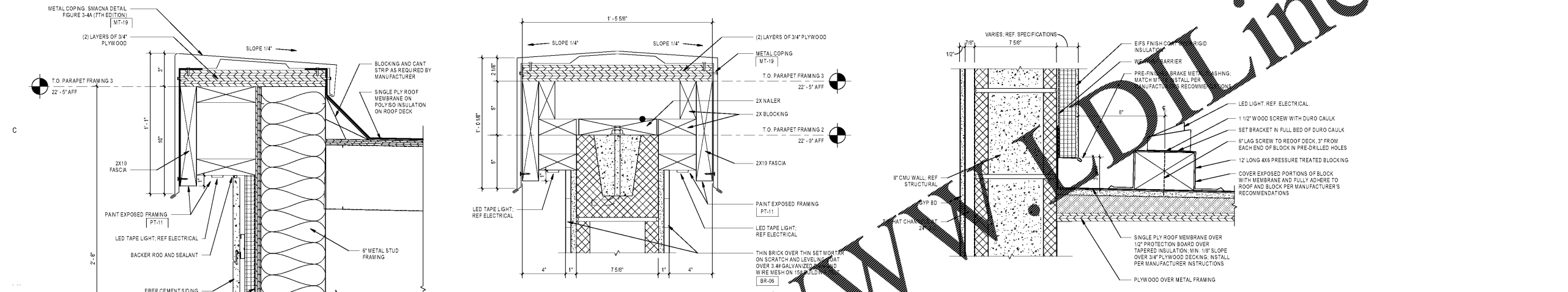
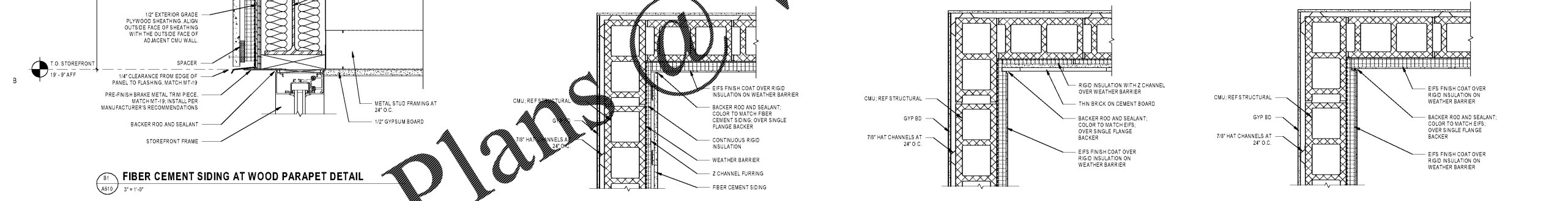


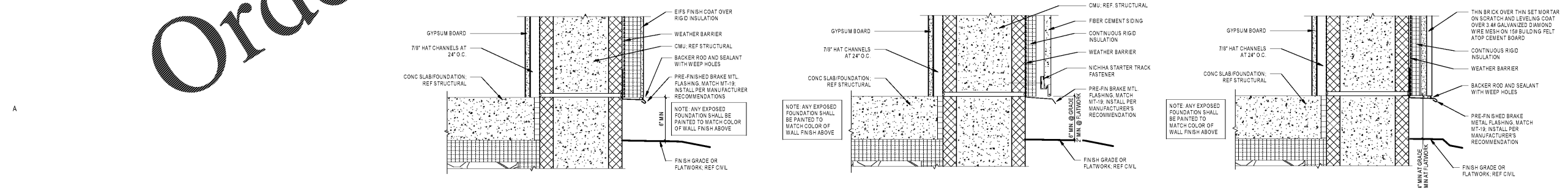
D1 EIFS AT CMU PARAPET DETAIL 3' x 1'-0"
D2 EIFS AT CMU PARAPET DETAIL W/ LIGHT 3' x 1'-0"
D3 EIFS AT TOWER PARAPET DETAIL W/ LIGHT 3' x 1'-0"
D4 FIBER CEMENT SIDING AT CMU PARAPET DETAIL 3' x 1'-0"



C1 FIBER CEMENT SIDING AT WOOD PARAPET DETAIL 3' x 1'-0"
C2 BRICK AT PARAPET DETAIL 3' x 1'-0"
C3 EIFS AT LOW ROOF DETAIL 3' x 1'-0"



B1 FIBER CEMENT SIDING AT WOOD PARAPET DETAIL 3' x 1'-0"
B2 EIFS TO FIBER CEMENT SIDING DETAIL 1 1/2' x 1'-0"
B3 BRICK TO EIFS DETAIL 1 1/2' x 1'-0"
B4 EIFS DETAIL AT CORNER 1 1/2' x 1'-0"



A1 EIFS AT GRADE DETAIL 3' x 1'-0"
A2 EIFS TO FIBER CEMENT SIDING DETAIL 1 1/2' x 1'-0"
A3 FIBER CEMENT AT GRADE DETAIL 3' x 1'-0"
A4 THIN BRICK AT GRADE DETAIL 3' x 1'-0"

Order Plans @ www.walddline.com



Mark S. Salopek, LLC
 3638 West Galloway Drive
 Richmond, OH 44286
 330.572.2112 330.572.2102

BLOOMIN BRANDS
HIALEAH, FL - OUTBACK STEAKHOUSE
 1751 W 48TH STREET
 HIALEAH, FLORIDA 33012

SHEET ISSUE:
 OUT TO PERMIT: 3/21/19

PRINCIPAL IN CHARGE: JC
 PROJECT ARCHITECT: MS
 DRAWN BY: TB
EXTERIOR DETAILS

SHEET NO. PROJ. NO. 2018201.29

A610