

MILLWORK NOTES

- 1 ALL JOINTS TO BE SMOOTH AND INVISIBLE
- 2 BOTTOM PLATE FASTENERS SHALL BE CONCEALED
- 3 ALL STAINED MEMBERS TO BE FIR



Mark S. Salopek, LLC
 3638 West Galloway Drive
 Richmond, OH 44286
 330.572.2112 330.572.2102

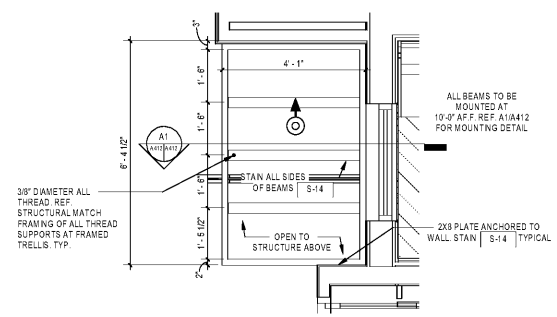
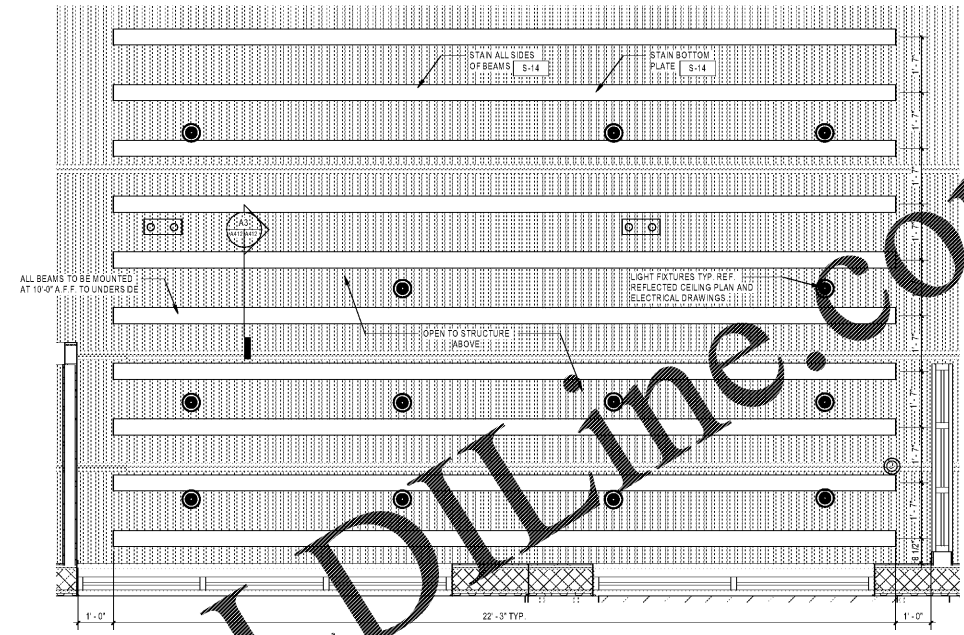
BLOOMING BRANDS
HIALEAH, FL - OUTBACK STEAKHOUSE
 1751 W 48TH STREET
 HIALEAH, FLORIDA 33012

SHEET ISSUE:
 OUT TO PERMIT: 3/21/19

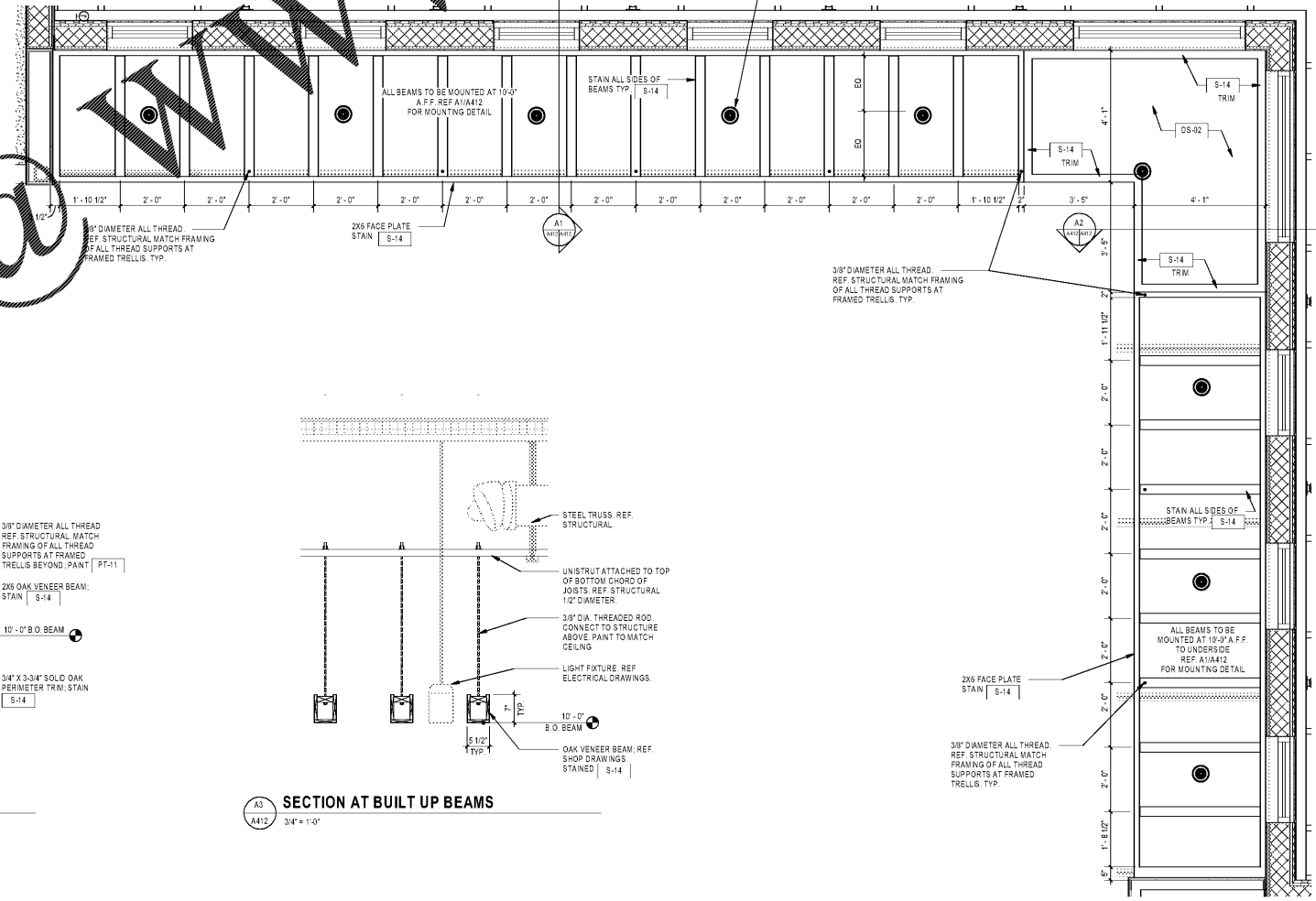
PRINCIPAL IN CHARGE: JC
 PROJECT ARCHITECT: MS
 DRAWN BY: ELMG
 SHEET TITLE:
ENLARGED CEILING BEAM PLANS & DETAILS

SHEET NO. PROJ. NO.
 2018231.29

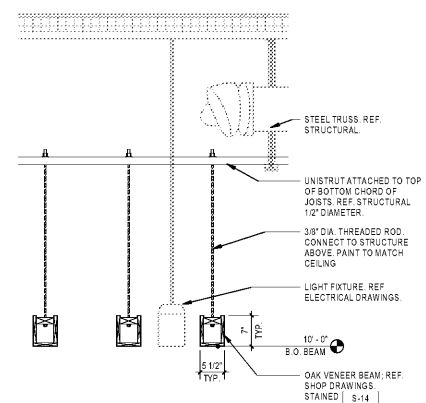
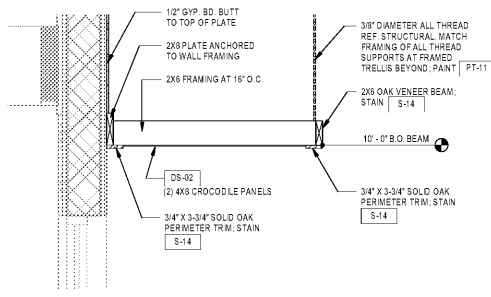
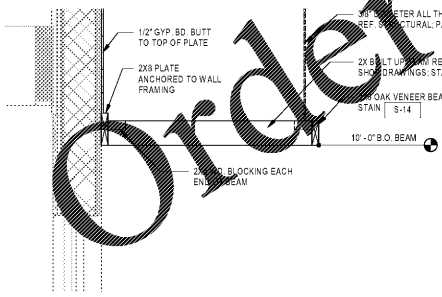
A412



A1 ENLARGED ENTRY TRELLIS PLAN
 12' x 1'-0"



A4 ENLARGED PERIMETER TRELLIS PLAN
 12' x 1'-0"



A1 SECTION AT TRELLIS FRAMING
 3/4" x 1'-0"

A2 SECTION AT SOFFIT
 3/4" x 1'-0"

A3 SECTION AT BUILT UP BEAMS
 3/4" x 1'-0"