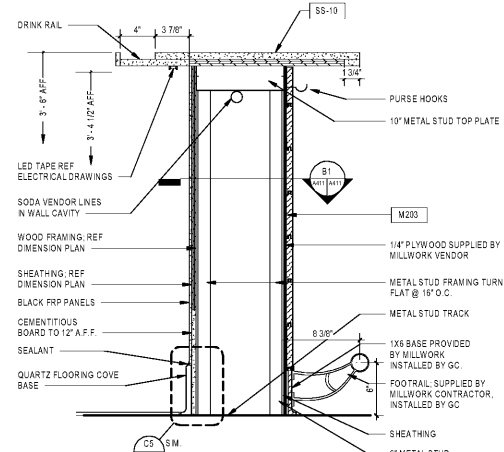
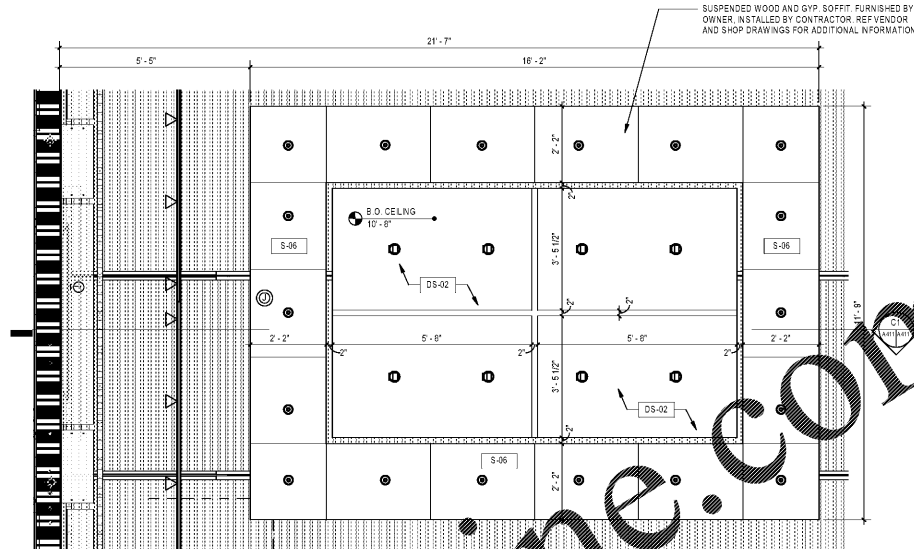


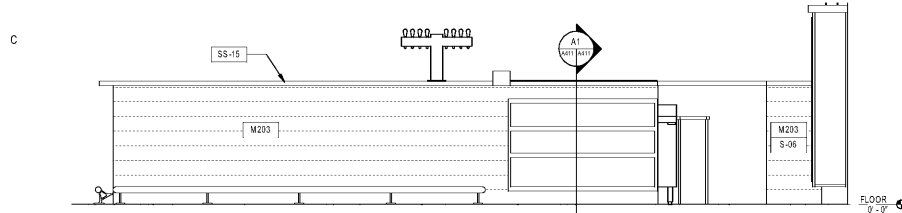
C1 BAR SECTION
A411 1/2" = 1'-0"



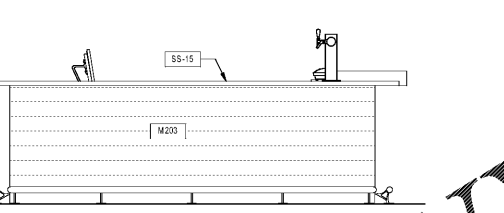
C2 BAR DIE WALL SECTION
A411 1/2" = 1'-0"



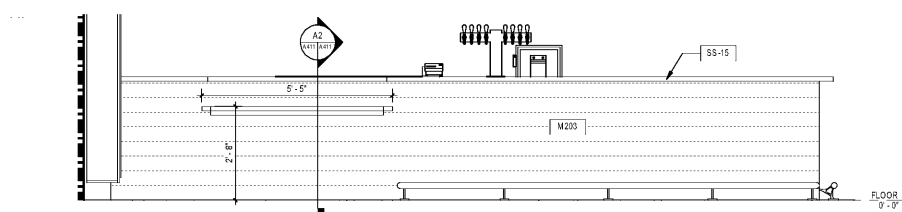
C4 ENLARGED BAR REFLECTED CEILING PLAN
A411 1/2" = 1'-0"



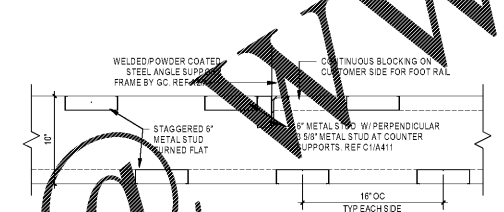
B BAR ELEVATION B
A411 1/2" = 1'-0"



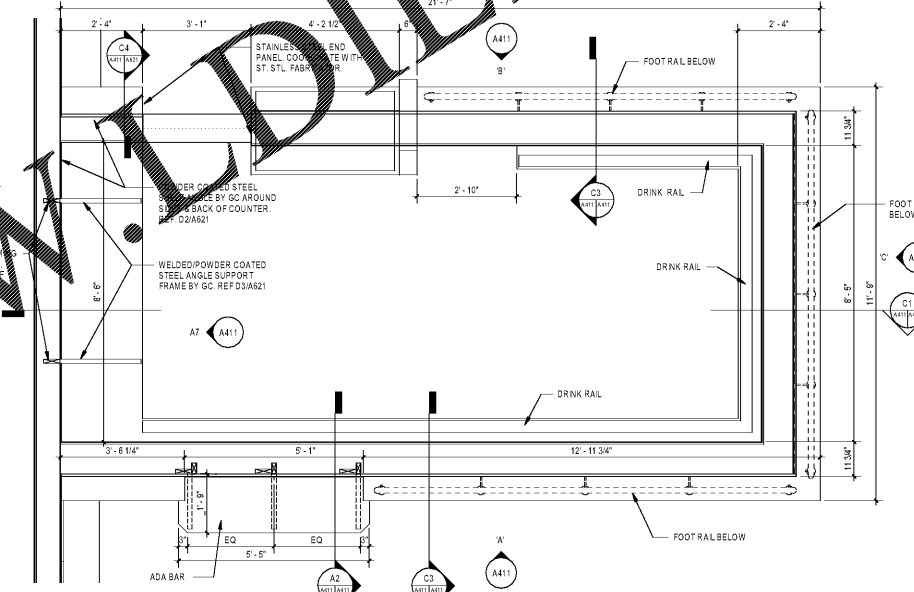
C BAR ELEVATION C
A411 1/2" = 1'-0"



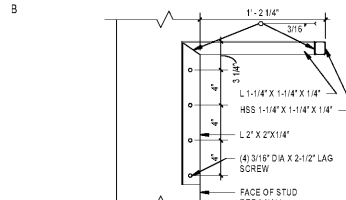
A BAR ELEVATION A
A411 1/2" = 1'-0"



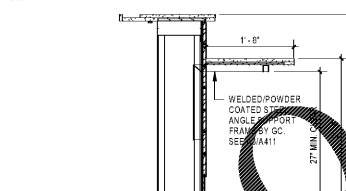
B1 BAR DIE WALL DETAIL
A411 1/2" = 1'-0"



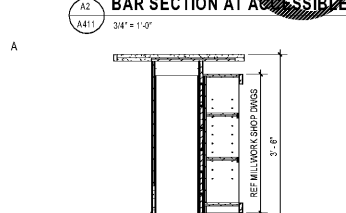
B4 ENLARGED BAR PLAN
A411 1/2" = 1'-0"



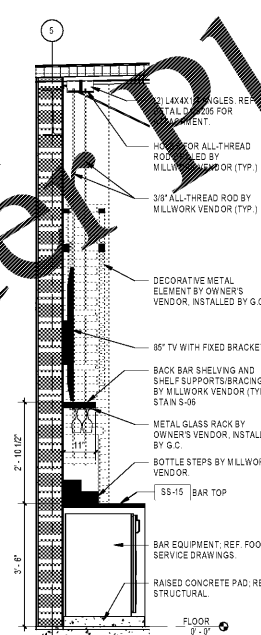
A3 BAR SUPPORT DETAIL AT ACCESSIBLE COUNTER
A411 1/2" = 1'-0"



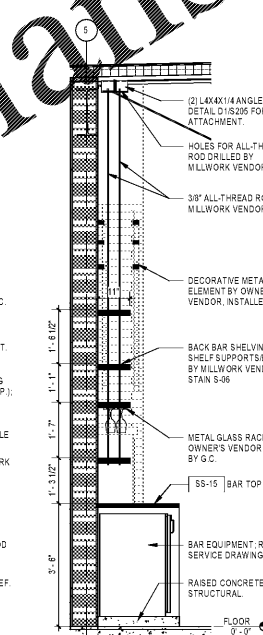
A2 BAR SECTION AT ACCESSIBLE COUNTER
A411 3/4" = 1'-0"



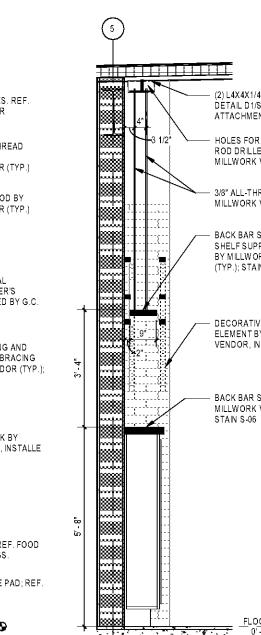
A1 BAR SECTION AT SHELVES
A411 3/4" = 1'-0"



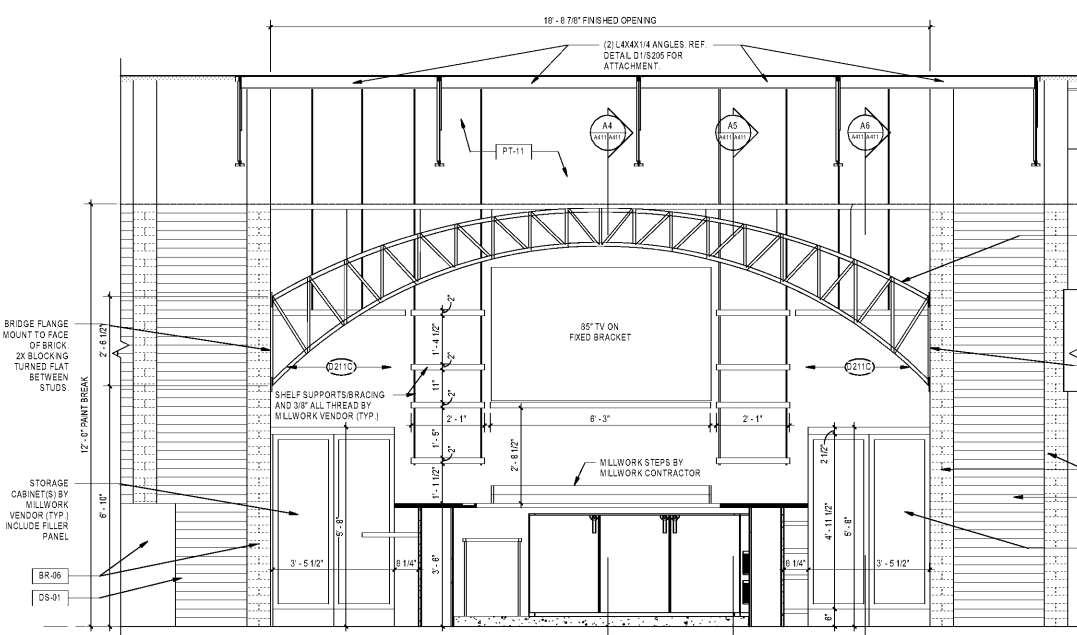
A4 BACK BAR SECTION 1
A411 1/2" = 1'-0"



A5 BACK BAR SECTION 2
A411 1/2" = 1'-0"



A6 BACK BAR SECTION 3
A411 1/2" = 1'-0"



A7 BACK BAR ELEVATION
A411 1/2" = 1'-0"

OUTBACK
STEAKHOUSE

Mark S. Salopek, LLC
3638 West Galloway Drive
Richfield, OH 44286
330.572.2112 330.572.2102

BLOOMIN BRANDS
HIALEAH, FL - OUTBACK STEAKHOUSE
1751 W 48TH STREET
HIALEAH, FLORIDA 33012

SHEET ISSUE:
OUT TO PERMIT:
3/21/19

PRINCIPAL IN CHARGE: JC
PROJECT ARCHITECT: MS
DRAWN BY: CC
SHEET TITLE:
**ENLARGED BAR
PLAN & ELEVATIONS**

SHEET NO. PROJ. NO.
2018201.29

A411