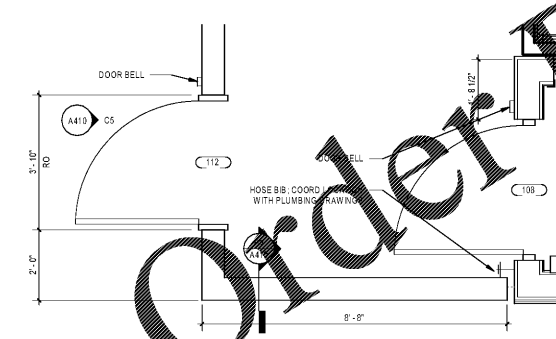
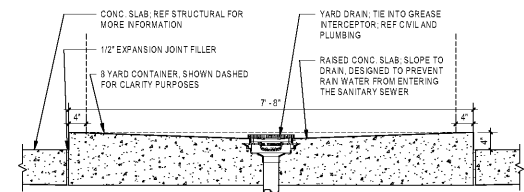


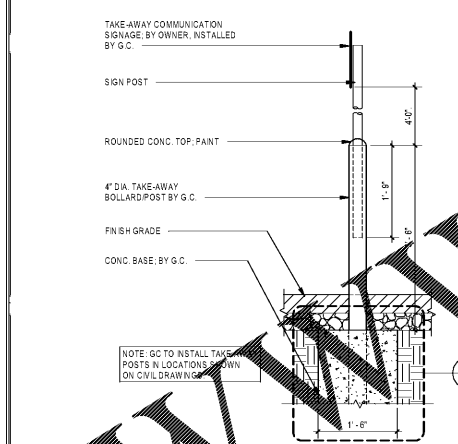
**C1 DUMPSTER ENCLOSURE PLAN**  
A410 1/2" = 1'-0"



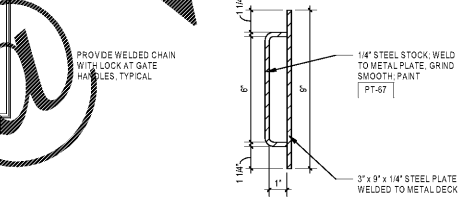
**B1 DUMPSTER DOOR PLAN**  
A410 1/2" = 1'-0"



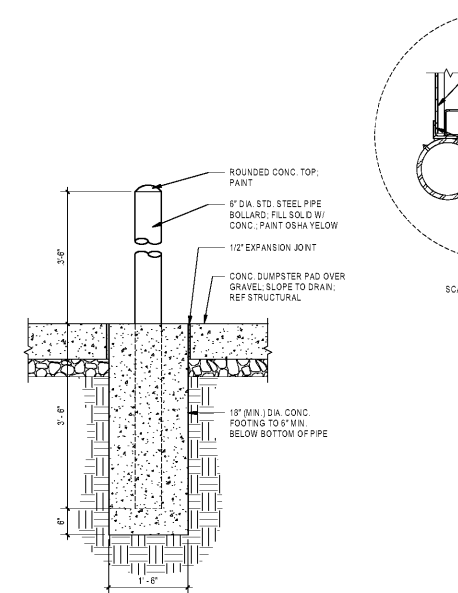
**A2 RAISED CONCRETE SLAB DETAIL**  
A410 3/4" = 1'-0"



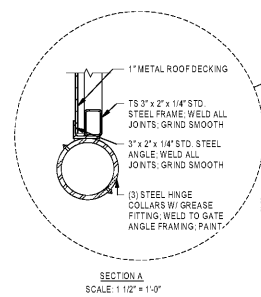
**C3 TAKE-AWAY POST DETAIL**  
A410 3/4" = 1'-0"



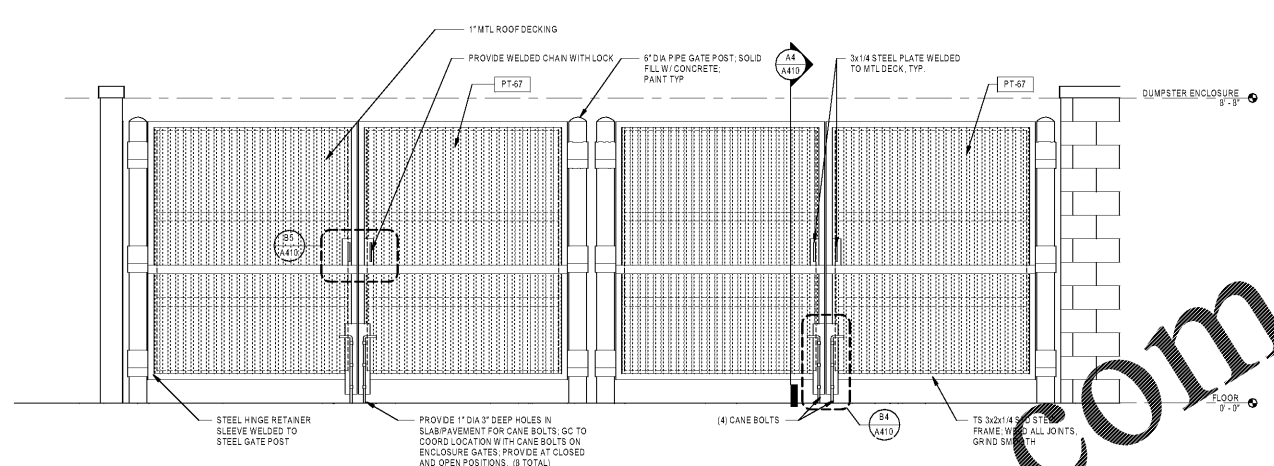
**B3 GATE HANDLE DETAIL**  
A410 3" = 1'-0"



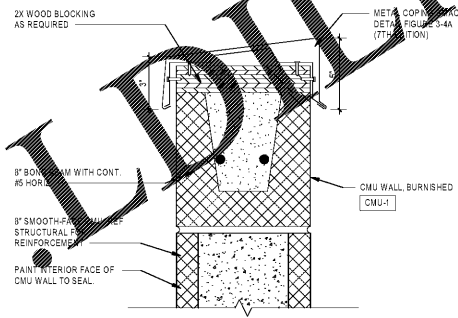
**A3 BOLLARD DETAIL**  
A410 3/4" = 1'-0"



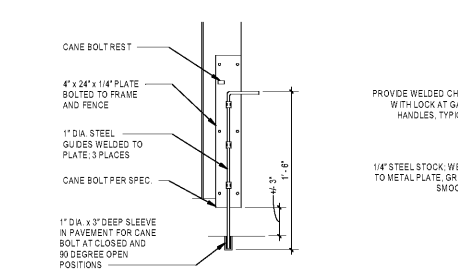
**A4 GATE POST DETAIL**  
A410 3/4" = 1'-0"



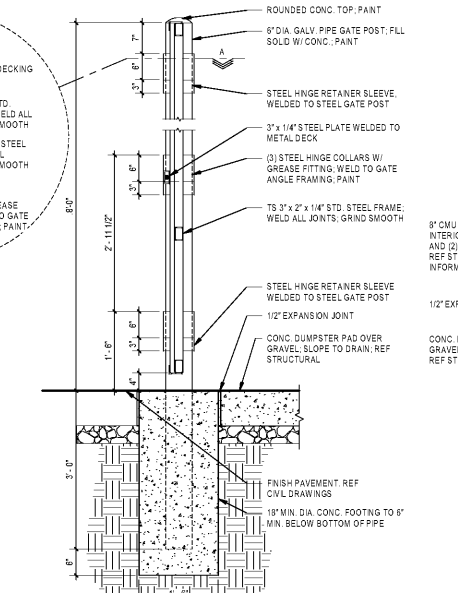
**D2 DUMPSTER ENCLOSURE ELEVATION**  
A410 1/2" = 1'-0"



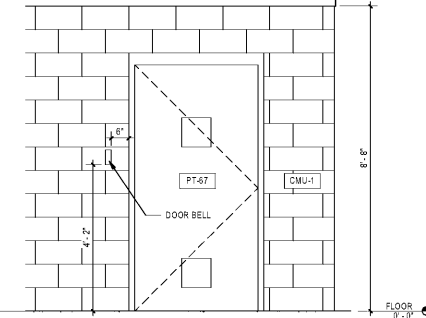
**C4 COPING DETAIL**  
A410 3" = 1'-0"



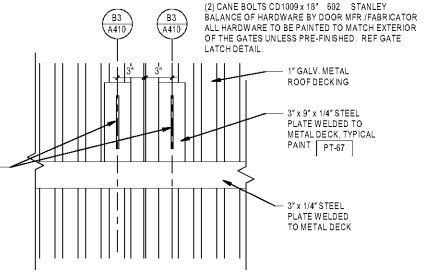
**B4 CANE BOLT DETAIL**  
A410 1/12" = 1'-0"



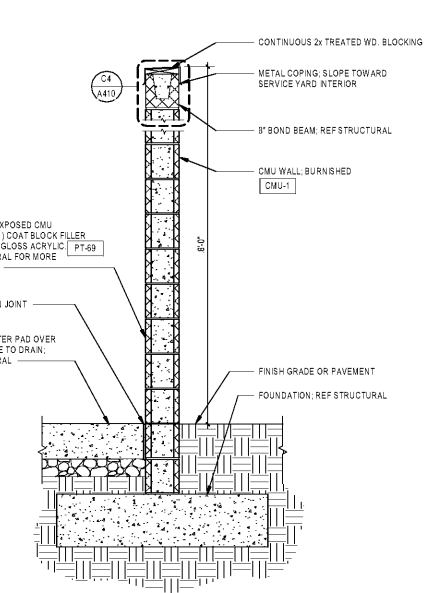
**A5 DUMPSTER ENCLOSURE WALL SECTION**  
A410 3/4" = 1'-0"



**C5 DUMPSTER DOOR ENCLOSURE ELEVATION**  
A410 1/2" = 1'-0"



**B5 GATE LATCH DETAIL AT DUMPSTER GATE**  
A410 1/12" = 1'-0"



**A5 DUMPSTER ENCLOSURE WALL SECTION**  
A410 3/4" = 1'-0"

**OUTBACK**  
STEAKHOUSE

Mark S. Salopek, LLC  
3638 West Galloway Drive  
Richfield, OH 44286  
330.572.2112 330.572.2102

BLOOMING BRANDS  
HIALEAH, FL - OUTBACK STEAKHOUSE  
1751 W 48TH STREET  
HIALEAH, FLORIDA 33012

SHEET ISSUE:  
OUT TO PERMIT: 3/21/19  
3 06/17/19 REVISION #3

PRINCIPAL IN CHARGE: JC  
PROJECT ARCHITECT: MS  
DRAWN BY: CC

SHEET TITLE:  
ENLARGED DUMPSTER ENCLOSURE PLAN AND DETAILS  
PROJ. NO. 2018231.29

**A410**