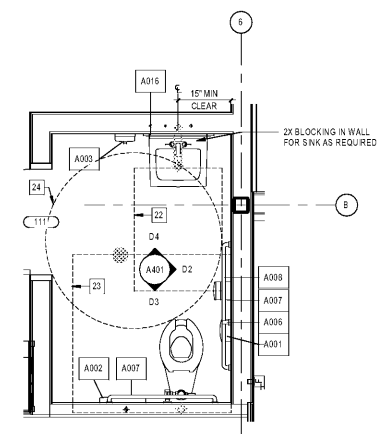


GENERAL NOTES

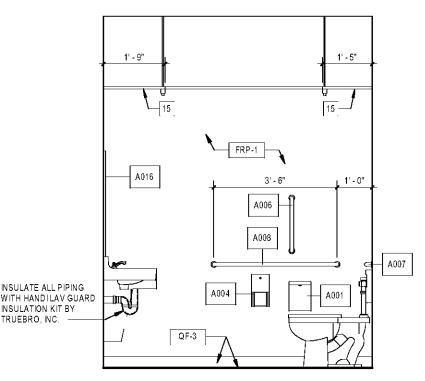
- A. ALL WALLS IN RESTROOM SHALL HAVE MOISTURE RESISTANT GYPSUM BOARD EXTENDING UP TO 5'-5 3/4" AFF WITH CEMENTIOUS BOARD ABOVE UNLESS NOTED OTHERWISE.
- B. REF A401 FOR HEIGHTS AND ADA CLEARANCES.
- C. REF TOILET ACCESSORY SCHEDULE ON SHEET A400 FOR ADDITIONAL INFORMATION.

SHEET KEYNOTES

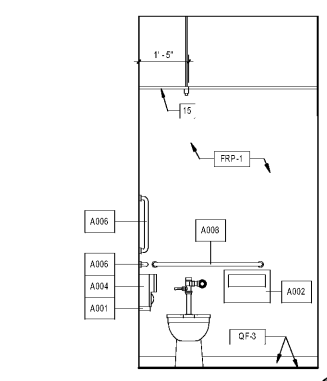
- 1 SAFE (BELOW INCL) GC TO SECURE TO FLOOR PER MANUFACTURER'S SPECIFICATIONS. REF STRUCTURAL.
- 2 48-PORT PATCH PANEL.
- 3 SECURITY MONITOR.
- 4 TASK LIGHTING.
- 5 PREFABRICATED CABINET BY MILLWORK VENDOR. INSTALLED BY GC.
- 6 PHONE BOX.
- 7 POWER STRIP MOUNTED ABOVE BACKPLASH.
- 8 WORK SURFACE PROVIDED BY MILLWORK VENDOR. INSTALLED BY GC.
- 9 FLING CABINETS, SUPPLIED BY 991.
- 10 2-PORT PATCH PANELS.
- 11 2X BLOCKING IN WALL AS REQUIRED FOR MOUNTING.
- 12 NETWORK CAN. PROVIDE 2X BLOCKING AS REQUIRED.
- 13 HOOK CLEAR BACKER WITH 2" HOODS.
- 14 FIRE ALARM PANEL. REF ELECTRICAL.
- 15 RESTROOM STORAGE SHELVING. REF CSA401.
- 16 PC MONITOR.
- 17 MUSIC EQUIPMENT.
- 18 3-INCH CONDUIT DOWN THRU CEILING. SERVES AS CHASE FOR ALL DATA FEEDS TO OFFICE.
- 19 CALLER I.D. BOX.
- 20 BROADBAND MODEM (GUEST WIFI).
- 21 CASH DRAWER ALONG UNDER DESK TOP.
- 22 30" X 48" CLEAR FLOOR AREA.
- 23 56" X 60" CLEAR FLOOR AREA.
- 24 5'-0" DIAMETER TURNAROUND.
- 25 FIRE ALARM HORN.
- 26 RECEPTACLE BEYOND. REF ELECTRICAL.
- 27 COMPUTER PRINTOUT.
- 28 ADJUSTABLE SHELF.
- 29 HOOK CLEAR BACKER.
- 30 NOISE EVALUATION SHEET. REF ELECTRICAL.



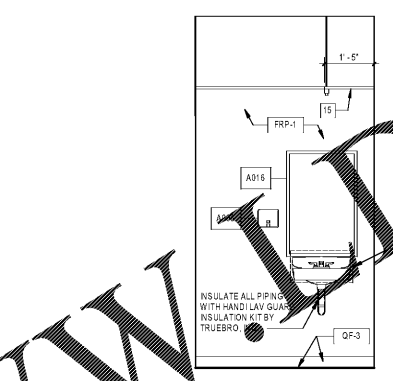
D1 ENLARGED EMPLOYEE RESTROOM PLAN
1/2" = 1'-0"



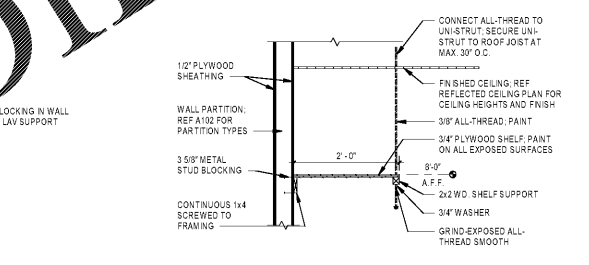
D2 EMPLOYEE RESTROOM ELEVATION
1/2" = 1'-0"



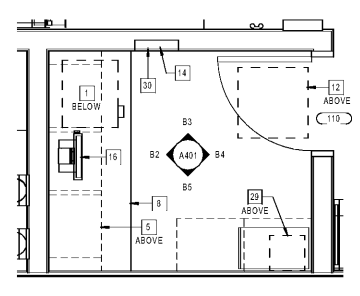
D3 EMPLOYEE RESTROOM ELEVATION
1/2" = 1'-0"



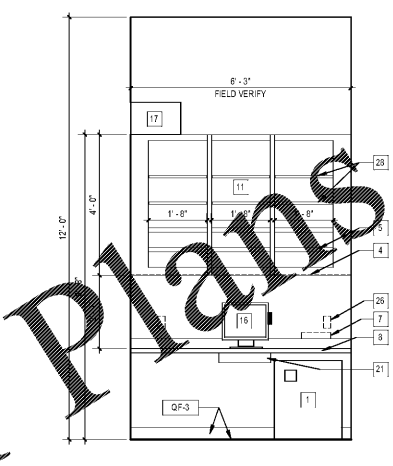
D4 EMPLOYEE RESTROOM ELEVATION
1/2" = 1'-0"



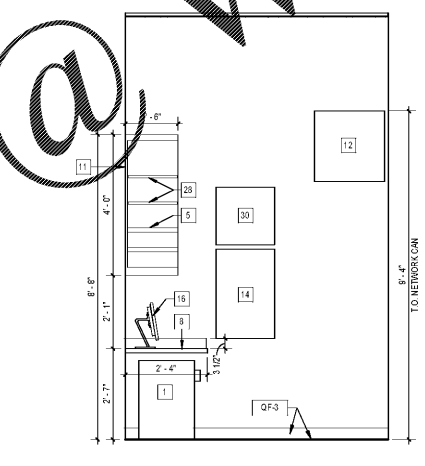
D5 DETAIL - STORAGE SHELVING
3/4" = 1'-0"



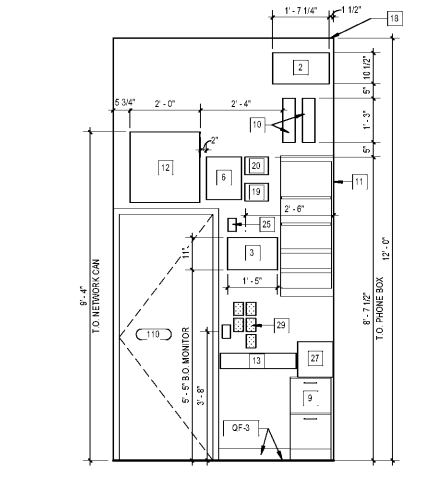
B1 OFFICE ENLARGED PLAN
1/2" = 1'-0"



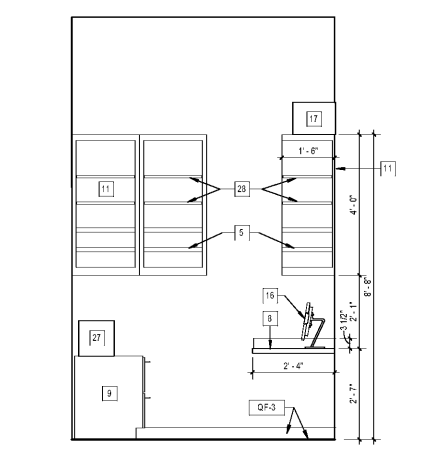
B2 OFFICE ELEVATION
1/2" = 1'-0"



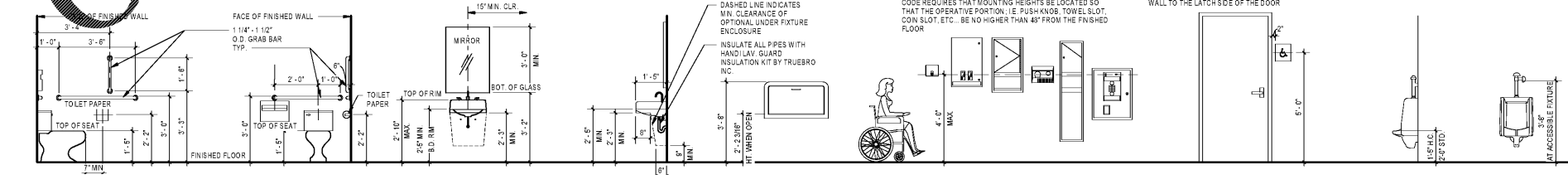
B3 OFFICE ELEVATION
1/2" = 1'-0"



B4 OFFICE ELEVATION
1/2" = 1'-0"



B5 OFFICE ELEVATION
1/2" = 1'-0"



A1 TYPICAL HEIGHTS AND ACCESSIBILITY CLEARANCES
3/8" = 1'-0"

CONNECT ALL-THREAD TO UNISTRUT. SECURE UNISTRUT TO ROOF JOIST AT MAX. 30" O.C.

FINISHED CEILING. REF REFLECTED CEILING PLAN FOR CEILING HEIGHTS AND FINISH

3/8" ALL-THREAD. PAINT ON ALL EXPOSED SURFACES

3/4" PLYWOOD SHELF. PAINT ON ALL EXPOSED SURFACES

2x W.D. SHELF SUPPORT

3/4" WASHER

GRIND EXPOSED ALL-THREAD SMOOTH

1/2" PLYWOOD SHEATHING

WALL PARTITION. REF A102 FOR PARTITION TYPES

3/8" METAL STUD BLOCKING

CONTINUOUS 1x4 SCREWED TO FRAMING



Mark S. Salopek, LLC
3638 West Galloway Drive
Richfield, OH 44286
330.572.2112 330.572.2102

BLOOMIN BRANDS
HIALEAH, FL - OUTBACK STEAKHOUSE
1751 W 48TH STREET
HIALEAH, FLORIDA 33012

SHEET ISSUE:
OUT TO PERMIT: 3/21/19

PRINCIPAL IN CHARGE: JC
PROJECT ARCHITECT: MS
DRAWN BY: CC
SHEET TITLE: ENLARGED RESTROOM AND OFFICE PLAN

SHEET NO. PROJ. NO. 2018201.29

A401