

GENERAL NOTES

- A. REF A104 FOR ALL INTERIOR WALL FINISHES
- B. REF A001 AND A401 FOR HEIGHTS AND ADA CLEARANCES

SHEET KEYNOTES

- 1 30" X 48" CLEAR FLOOR AREA
- 2 66" X 87" CLEAR FLOOR AREA
- 3 6" DIAMETER TURNING RADIUS
- 4 54" X 87" CLEAR FLOOR AREA
- 5 SOLID SURFACE COUNTERTOP FURNISHED AND INSTALLED BY CAMBRIA
- 6 FULL LENGTH ALUMINUM CHANNEL PART OF PARTITION PACKAGE
- 7 ALONG FLOOR TILE AND GROUT LINES WITH THE WALL
- 8 METAL HARDWARE AT PARTITIONS TO BE ABOVE TILE ACCENT BAND, TYP.

PLUMBING FIXTURE REQUIREMENTS

NO. OCCUPANTS SERVED: 289 PERSONS (135 MALE / 135 FEMALE) | 2017 FCC CH. 4 - TABLE 403.1 - TABULATION

FIXTURES:	MALE		FEMALE	
	REQUIRED	PROVIDED	REQUIRED	PROVIDED
WATER CLOSETS: (175)	2	1	2	3
URINALS (87% SUB. SECTION 419.2)	1	2	N/A	N/A
LAVATORIES: (100)	1	2	1	2
DRINKING FOUNTAINS: (SECTION 410.4)	N/A	N/A	N/A	N/A
SERVICE SINK:	1 REQUIRED, 1 PROVIDED			

NOTE: (1) ADDITIONAL SINGLE OCCUPANCY EMPLOYEE RESTROOM IS PROVIDED BUT NOT REQUIRED, ACCESSIBLE ONLY TO EMPLOYEES.

TOILET ACCESSORY SCHEDULE

ITEM NO.	ITEM	QTY.	ITEM MANUFACTURER NO.	MANUF.	CONTACT	REMARKS
A001	SANITARY NAPKIN DISPOSAL	3	CONTURA SERIES SURFACE MOUNTED SANITARY NAPKIN B-273	BOBRICK	BOBRICK WASHROOM EQUIPMENT 100 BOBRICK DRIVE JACKSON, TN 38301-5625 (PH) 731-424-7000	DIMENSIONS: 10" H, 7 1/2" W, 3 1/2" D
A002	SANITARY SEAT COVER DISPENSER	4	CONTURA SERIES SURFACE MOUNTED SEAT COVER B-421	BOBRICK	BOBRICK WASHROOM EQUIPMENT 100 BOBRICK DRIVE JACKSON, TN 38301-5625 (PH) 731-424-7000	DIMENSIONS: 11 1/4" H, 16 3/4" W, 2 1/8" D
A003	SOAP DISPENSER	2	CONTURA SERIES SURFACE MOUNTED SOAP B-412	BOBRICK	BOBRICK WASHROOM EQUIPMENT 100 BOBRICK DRIVE JACKSON, TN 38301-5625 (PH) 731-424-7000	DIMENSIONS: 8 1/8" H, 7" W, 2 3/16" D
A004	TOILET PAPER DISPENSER	4	CONTURA SERIES SURFACE MOUNTED MULTIROLL TOILET TISSUE B-428B	BOBRICK	BOBRICK WASHROOM EQUIPMENT 100 BOBRICK DRIVE JACKSON, TN 38301-5625 (PH) 731-424-7000	DIMENSIONS: 11" H, 6 1/16" W, 5 1/16" D
A006	GRAB BAR - 18"	2	1-1/2" DIAMETER STAINLESS STEEL GRAB BARS WITH SNAP FLANGE B-460S	BOBRICK	BOBRICK WASHROOM EQUIPMENT 100 BOBRICK DRIVE JACKSON, TN 38301-5625 (PH) 731-424-7000	DIMENSIONS: 18" VERTICAL
A007	GRAB BAR - 36"	2	1-1/2" DIAMETER STAINLESS STEEL GRAB BARS WITH SNAP FLANGE B-460S	BOBRICK	BOBRICK WASHROOM EQUIPMENT 100 BOBRICK DRIVE JACKSON, TN 38301-5625 (PH) 731-424-7000	DIMENSIONS: 36" HORIZONTAL
A008	GRAB BAR - 42"	2	SNAP FLANGE B-880S	BOBRICK	BOBRICK WASHROOM EQUIPMENT 100 BOBRICK DRIVE JACKSON, TN 38301-5625 (PH) 731-424-7000	DIMENSIONS: 42" HORIZONTAL
A016	TILTED MIRROR	2	TLT MIRROR WITH STAINLESS STEEL FRAME B-290 1836	BOBRICK	BOBRICK WASHROOM EQUIPMENT 100 BOBRICK DRIVE JACKSON, TN 38301-5625 (PH) 731-424-7000	DIMENSIONS: 30" H, 18" W, 4" D
A017	MIRROR (PUBLIC RR)	-	-	-	-	PROVIDED AND INSTALLED BY C.C.
A018	BABY CHANGING TABLE WITH LINERS	2	HORIZONTAL SURFACE MOUNTED PLASTIC FINISH BABY CHANGING STATION KB200-00ST CREAM	KOALA KARE	BOBRICK WASHROOM EQUIPMENT 100 BOBRICK DRIVE JACKSON, TN 38301-5625 (PH) 731-424-7000	DIMENSIONS: 20" H, 35 1/4" W, 18" D
A019	TOILET PARTITION	-	WILSONART LAMINATE #799K-FB "HAMPTON WALNUT" PREMIUM AEGON	-	PANEL CENTER (PH) 814-247-6000	1/2" MOISTURE RESISTANT GYP. BD. FULL HEIGHT
A020	PAPER TOWEL DISPENSER	1	CONTURA SERIES SURFACE MOUNTED PAPER TOWEL DISPENSER B-428C	BOBRICK	BOBRICK WASHROOM EQUIPMENT 100 BOBRICK DRIVE JACKSON, TN 38301-5625 (PH) 731-424-7000	DIMENSIONS: 12" H, 10 1/2" W, 4 7/8" D
A021	PAPER TOWEL DSP & WASTE RECEPTACLE	1	SURFACE MOUNTED MODEL MB-43949	BOBRICK	BOBRICK WASHROOM EQUIPMENT 100 BOBRICK DRIVE JACKSON, TN 38301-5625 (PH) 731-424-7000	DIMENSIONS: 55 3/8" H, 17 9/16" W, 9 1/8" D
A032	PAPER TOWEL DSP & WASTE RECEPTACLE	3	RECESSED MODEL RB-43944	BOBRICK	BOBRICK WASHROOM EQUIPMENT 100 BOBRICK DRIVE JACKSON, TN 38301-5625 (PH) 731-424-7000	DIMENSIONS: 55 3/8" H, 17 9/16" W, 9 1/8" D
A034	COUNTERTOP PAPER TOWEL DISPENSER	2	MODEL RB-526	BOBRICK	BOBRICK WASHROOM EQUIPMENT 100 BOBRICK DRIVE JACKSON, TN 38301-5625 (PH) 731-424-7000	DIMENSIONS: 17 5/16" H, 12 3/4" W, 6" D COUNTERTOP ROUGH OPENING: 12-1/4" W X 4-1/2" D
A035	SURFACE MOUNTED WASTE RECEPTACLE	2	MODEL RB-577	BOBRICK	BOBRICK WASHROOM EQUIPMENT 100 BOBRICK DRIVE JACKSON, TN 38301-5625 (PH) 731-424-7000	DIMENSIONS: 25" H, 15 1/8" W, 8 1/2" D
A036	TOILET PAPER DISPENSER	1	CONTURA SERIES SURFACE MOUNTED MULTIROLL TOILET TISSUE B-428C	BOBRICK	BOBRICK WASHROOM EQUIPMENT 100 BOBRICK DRIVE JACKSON, TN 38301-5625 (PH) 731-424-7000	DIMENSIONS: 12 1/2" H, 6 1/16" W, 5 1/16" D
A037	SANITARY NAPKIN DISPENSER	3	CONTURA SERIES SURFACE MOUNTED SANITARY NAPKIN B-273	BOBRICK	BOBRICK WASHROOM EQUIPMENT 100 BOBRICK DRIVE JACKSON, TN 38301-5625 (PH) 731-424-7000	DIMENSIONS: 10 1/8" H, 13" W, 4 3/16" D
A038	MANUAL SOAP DISPENSER	1	LAVATORY MOUNTED MANUAL SOAP DISPENSER B-522	BOBRICK	BOBRICK WASHROOM EQUIPMENT 100 BOBRICK DRIVE JACKSON, TN 38301-5625 (PH) 731-424-7000	DIMENSIONS: 17 5/8" H, 5 5/8" W, 3 5/16" D
A039	PERCUTANEOUS RECEPTACLE	2	MM 1811-0012	TBD	TBD	TBD



Mark S. Salopek, LLC
3638 West Gateway Drive
Richfield, OH 44286
330.572.2112 330.572.2102

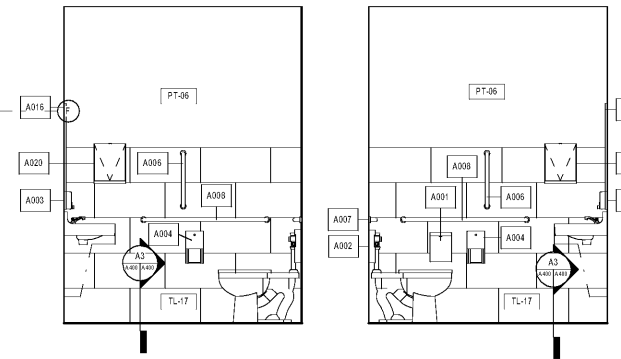
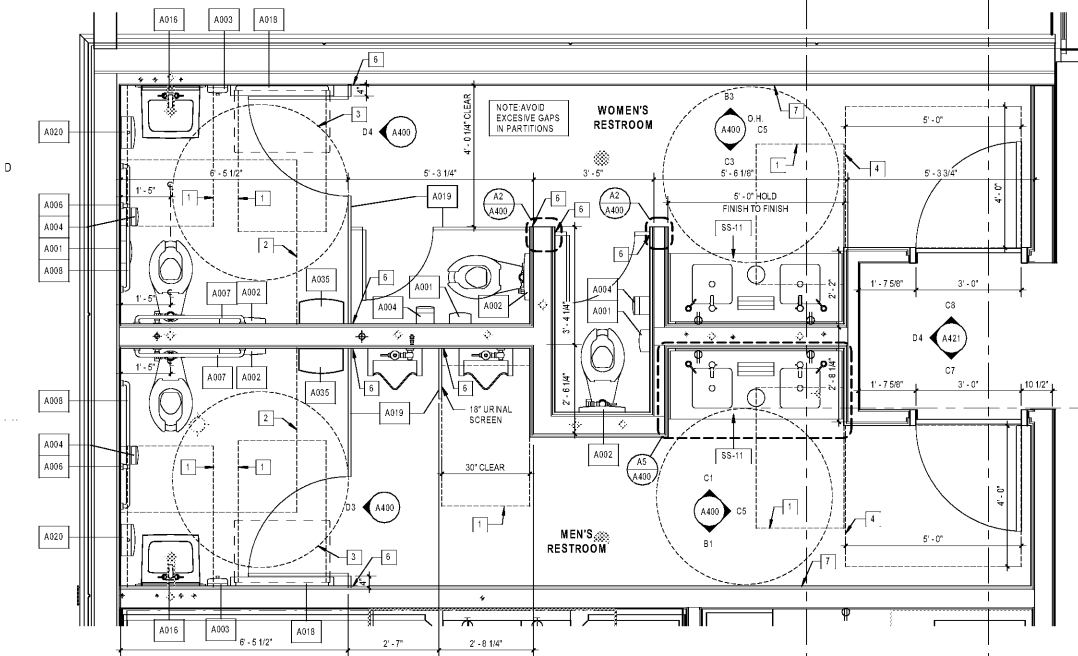
BLOOMIN BRANDS
HIALEAH, FL - OUTBACK STEAKHOUSE
1751 W 48TH STREET
HIALEAH, FLORIDA 33012

SHEET ISSUE:
OUT TO PERMIT: 3/21/19

PRINCIPAL IN CHARGE: JC
PROJECT ARCHITECT: MS
DRAWN BY: CC
SHEET TITLE: ENLARGED RESTROOM PLANS

SHEET NO. A400 PROJ. NO. 2018201.29

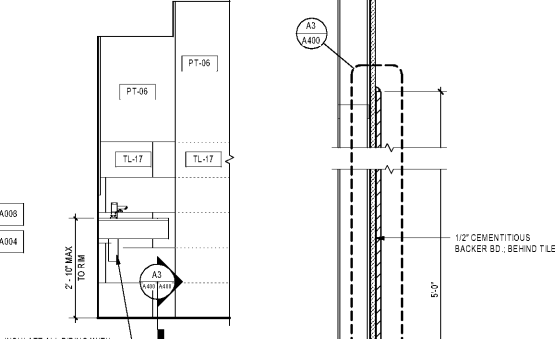
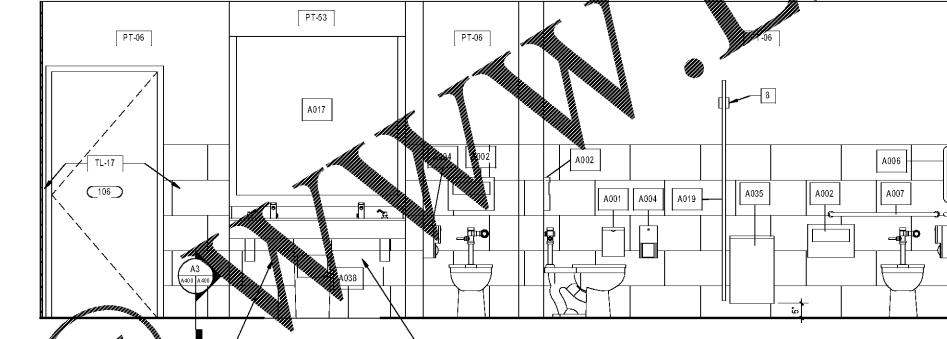
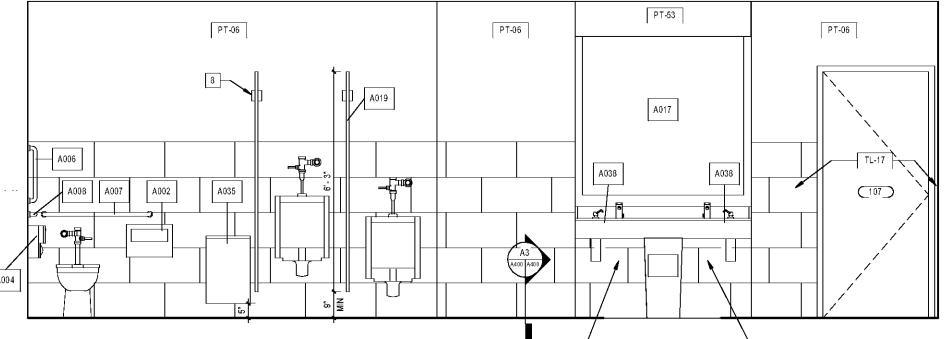
A400



D1 ENLARGED RESTROOM PLAN
A400 1/2" = 1'-0"

D3 MEN'S RESTROOM ELEVATION
A400 1/2" = 1'-0"

D4 WOMEN'S RESTROOM ELEVATION
A400 1/2" = 1'-0"

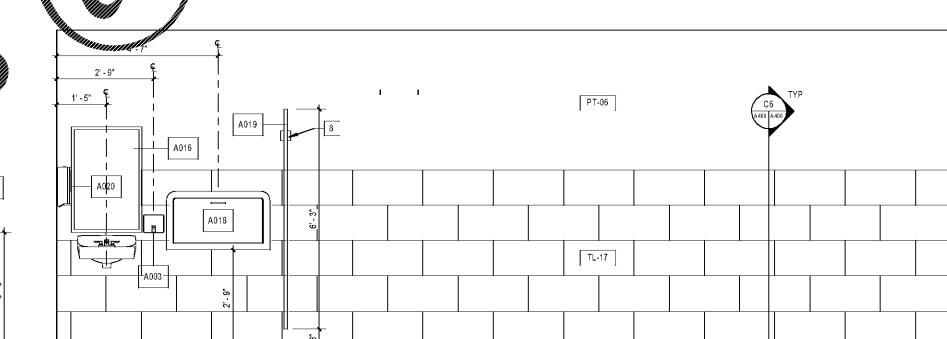
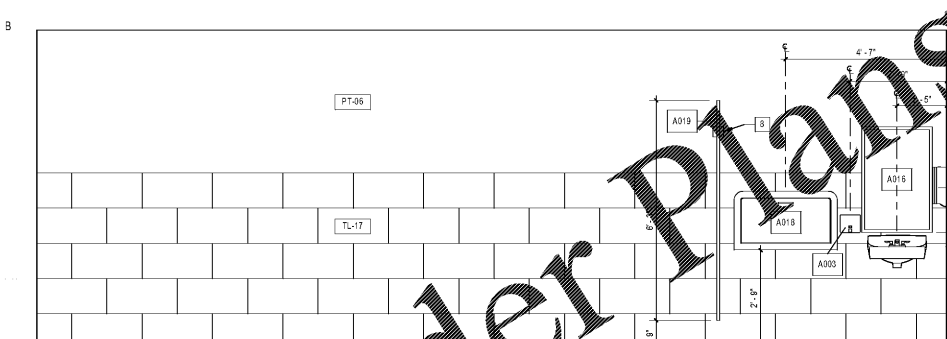


C1 MEN'S RESTROOM ELEVATION
A400 1/2" = 1'-0"

C3 WOMEN'S RESTROOM ELEVATION
A400 1/2" = 1'-0"

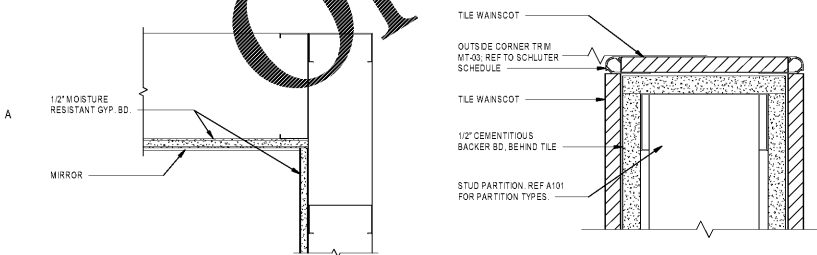
C5 RESTROOM ELEVATION
A400 1/2" = 1'-0"

C6 RESTROOM WAINSCOT DETAIL
A400 1 1/2" = 1'-0"

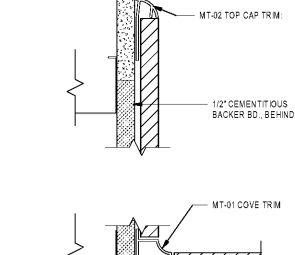


B1 MEN'S RESTROOM ELEVATION
A400 1/2" = 1'-0"

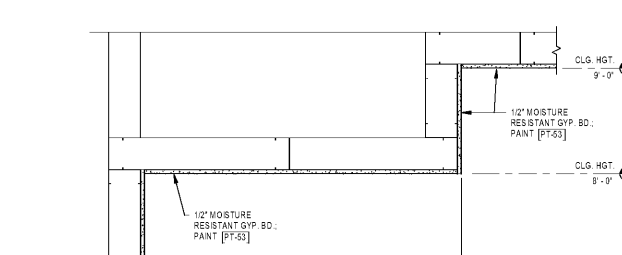
B3 WOMEN'S RESTROOM ELEVATION
A400 1/2" = 1'-0"



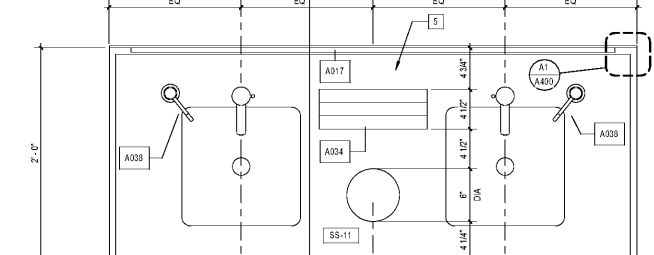
A1 DETAIL - MIRROR (AT CORNER)
A400 3" = 1'-0"



A2 DETAIL - OUTSIDE CORNER
A400 6" = 1'-0"



A3 DETAIL - TRIM
A400 6" = 1'-0"



A4 RR SOFFIT DETAIL
A400 1 1/2" = 1'-0"

A5 ENLARGED COUNTERTOP 2
A400 1 1/2" = 1'-0"

Order Plans