

GENERAL NOTES

1. ALL WOOD PRODUCTS IN EXTERIOR WALL ENVELOPE SHALL BE PRESSURE-TREATED.
2. TREAT EXTERIOR WALLS WITH TERMITICIDE PRIOR TO CLOSING UP. REFERENCE SPECIFICATION SECTION 31.31.16.



Mark S. Salopek, LLC
 3638 West Galloway Drive
 Richmond, OH 44286
 330.572.2112 330.572.2102

BLOOMIN BRANDS
HIALEAH, FL - OUTBACK STEAKHOUSE
 1751 W 48TH STREET
 HIALEAH, FLORIDA 33012

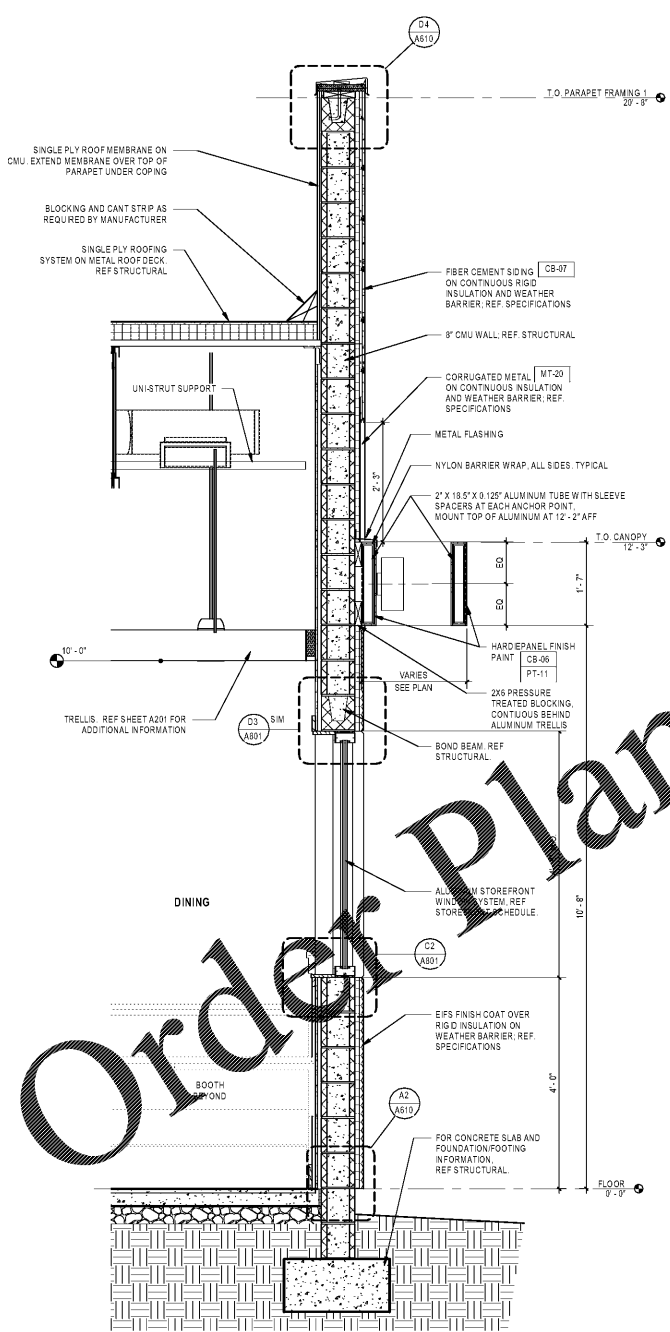
SHEET ISSUE:
 OUT TO PERMIT: 3/21/19

PRINCIPAL IN CHARGE: JC
 PROJECT ARCHITECT: MS
 DRAWN BY: TB

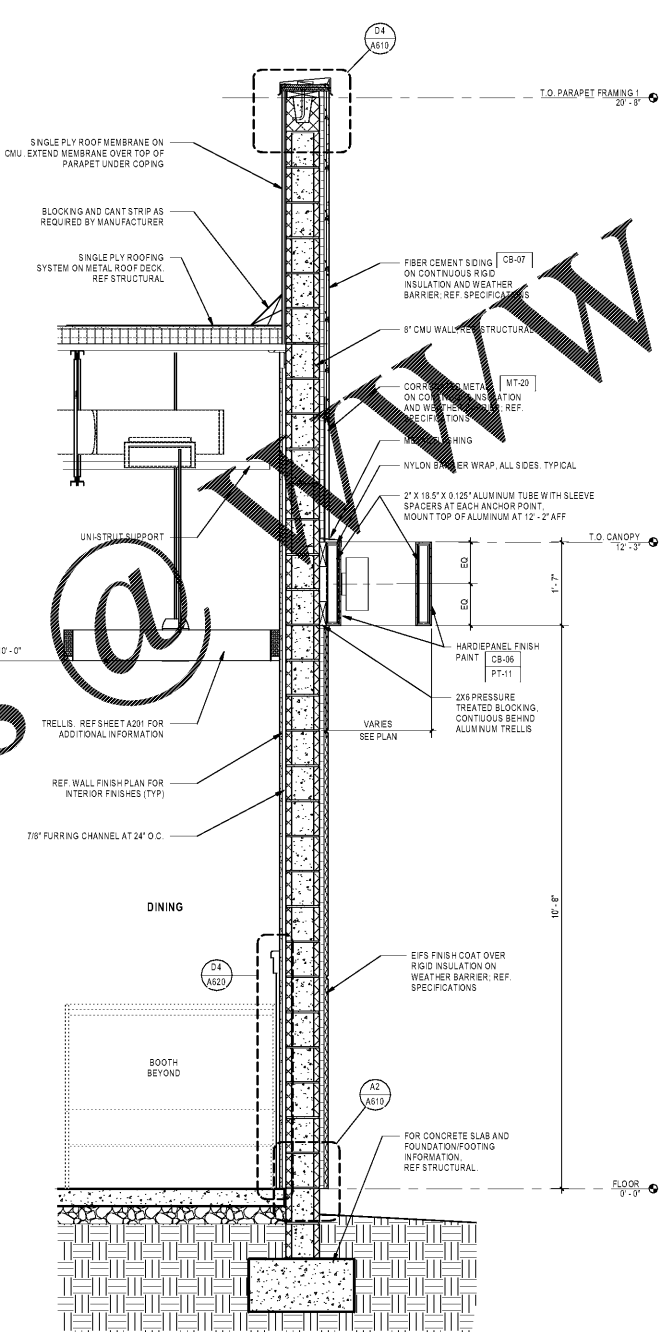
SHEET TITLE:
WALL SECTIONS

SHEET NO. PROJ. NO.
 2018201.29

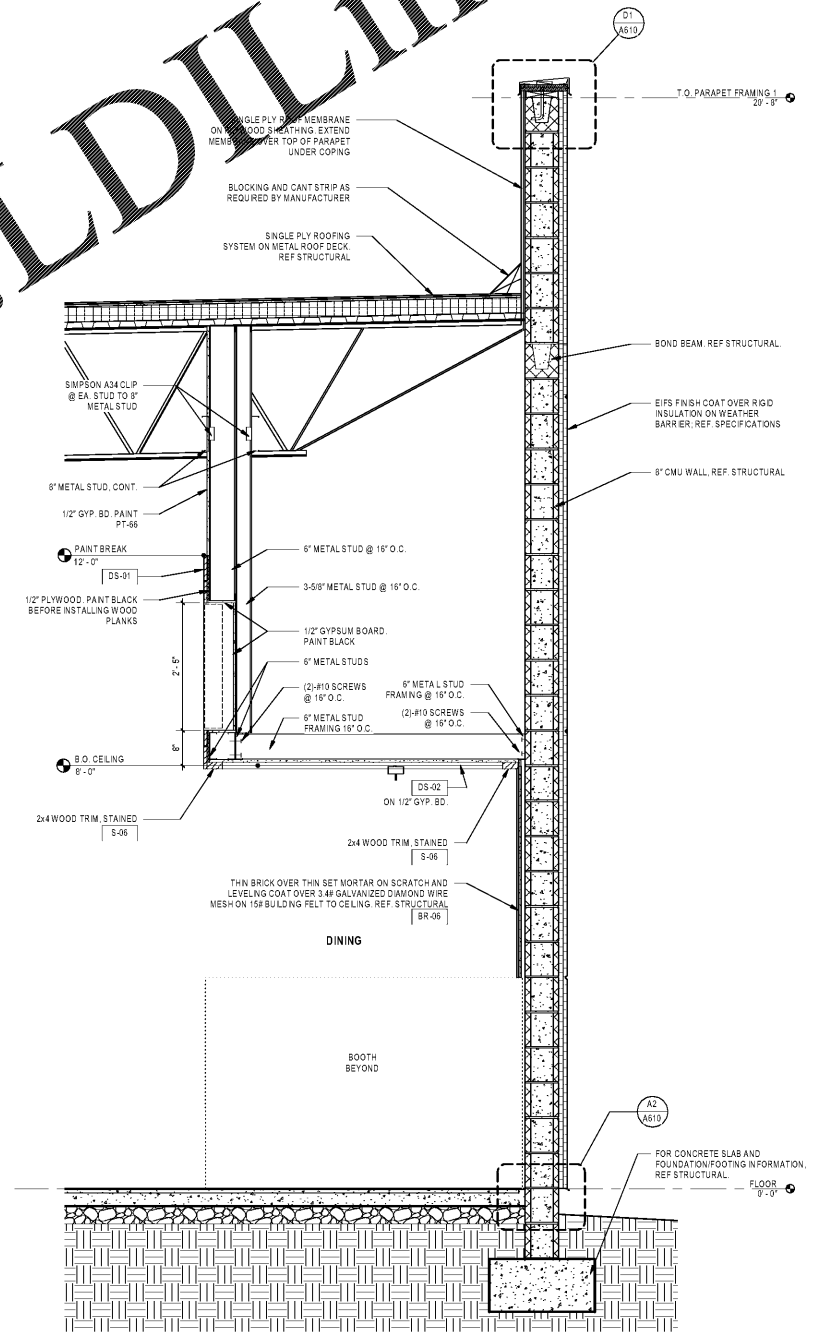
A341



A1 SECTION AT DINING WINDOWS
 3/4" = 1'-0"



A2 SECTION AT DINING
 3/4" = 1'-0"



A3 SECTION @ U-BOOTH
 3/4" = 1'-0"

www.LDILine.com