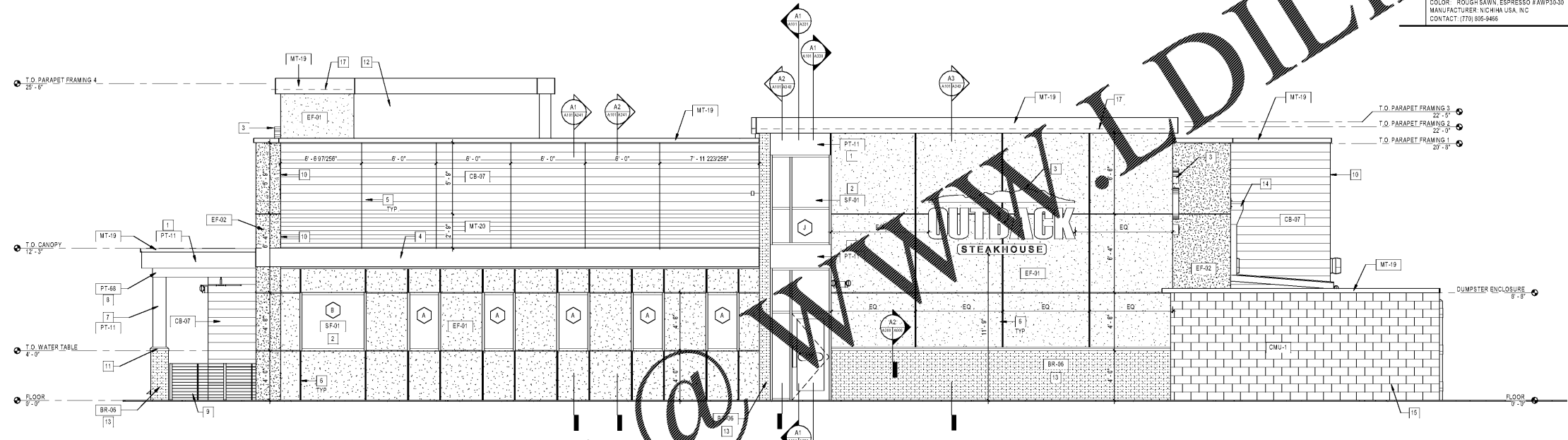
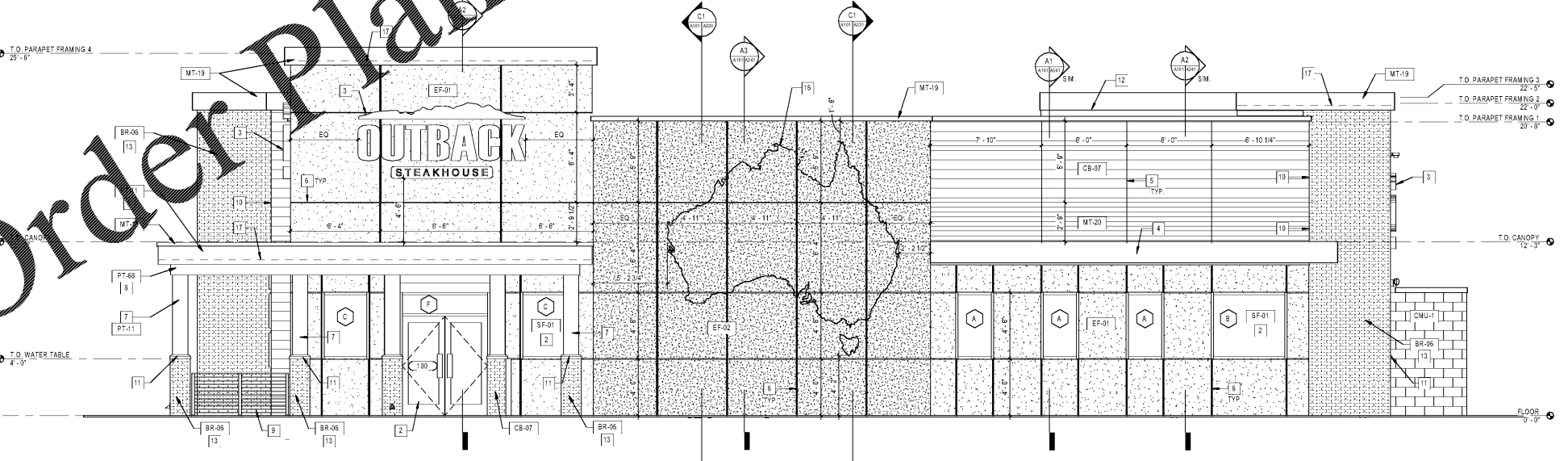


D1 TYPICAL EIFS REVEAL
A300 3" = 1'-0"



B1 ELEVATION - EAST
A300 1/4" = 1'-0"



A1 ELEVATION - SOUTH
A300 1/4" = 1'-0"

GENERAL NOTES

- A. SIGNAGE SHOWN FOR GENERAL LOCATION ONLY. REF APPROVED SIGN DRAWINGS BY SIGNAGE COMPANY.
- B. CONTRACTOR TO SUPPLY REQUIRED POWER AND CONNECTION TO SIGN, COORDINATE WITH SIGN CONTRACTOR.
- C. VERIFY SQUARE FOOTAGE REQUIREMENTS PER LOCAL ZONING ORDINANCES AND CODES.
- D. SEPARATE PERMIT REQUIRED FOR ALL SIGNS.
- E. REF FINISH SCHEDULE FOR EXTERIOR FINISHES AND COLORS.
- F. REF SHEET A801 FOR ALUMINUM STOREFRONT INFORMATION AND GLAZING NOTES.

SHEET KEYNOTES

- 1. BLADE ROOF CANOPY, HARD BOARD PAINTED PT-11
- 2. ALUMINUM STOREFRONT AND DOORS, REF SHEETS A801 & A801 FOR SCHEDULES
- 3. SIGNAGE SUPPLIED AND INSTALLED BY OTHERS, GC SHALL PROVIDE POWER SUB-OUT, SUPPLY BLOCKING AS REQUIRED FOR SIGNAGE ATTACHMENT, REF ELECTRICAL
- 4. ALUMINUM TRELLIS WITH HARD EPANEL, WRAP, PAINTED PT-11
- 5. CONTROL JOINTS MFR STANDARD
- 6. SHALLOW CUT CONTROL JOINT, REF TO DETAIL D1A300
- 7. CB-08 HARD EPANEL COLOR SURROUND, NO HORIZONTAL JOINTS IN COL PANELS, REF SECTIONS AND DETAILS
- 8. HARD EPANEL COLOR BAND WITH LED RIBBON LIGHTING, REF TO ITEM CB-08 ON EXTERIOR FINISH SCHEDULE, REF TO WALL SECTIONS FOR DETAILS
- 9. STEEL FRAMED CABLE RAILING, DARK BRONZE, REF D1 & D2/A101
- 10. POWDER COATED 1-1/2" x 1-1/2" ALUMINUM OUTSIDE CORNER TRIM TO MATCH TYPE AND COLOR OF WALL SYSTEM BY GC
- 11. PRECAST CONCRETE WATERTABLE, REFERENCE WALL SECTIONS
- 12. SINGLE PLY ROOF MEMBRANE, WHITE ON VERTICAL, EXPOSED SURFACES, WHITE ON HORIZONTAL, EXPOSED SURFACES
- 13. BRICK, RUNNING BOND
- 14. SHEET METAL, COLLECTOR BOX AND DOWNSPOUT, PREFINISHED TO MATCH MT-19, REF CIVIL FOR CONTINUATION
- 15. DUMPSTER ENCLOSURE, REF SHEET A410
- 16. ARTWORK, SUPPLIED AND INSTALLED BY OTHERS
- 17. LED COVE LIGHT (L234), REF ELECTRICAL ROOF PLAN

EXTERIOR FINISH SCHEDULE

TYPE	REMARKS		
EF-01	INTEGRAL COLOR EIFS: STOTHELM G: XPS OR DRYVIT OUTSULATION PLUS EIFS SYSTEM COLOR: [PT-69] MANUFACTURER: STO OR DRYVIT NOTES: FINE SAND FINISH METAL COPING TO BE [MT-19]		
EF-02	INTEGRAL COLOR EIFS: STOTHELM G: XPS OR DRYVIT OUTSULATION PLUS EIFS SYSTEM COLOR: [PT-68] MANUFACTURER: STO OR DRYVIT NOTES: FINE SAND FINISH METAL COPING TO BE [MT-19]		
CONTACT: WGREENE@STOORP.COM WEBSITE: WWW.STOORP.COM			
MASONRY	REMARKS		
BR-06	THIN BRICK RUNNING BOND, STANDARD THIN SET COURSE 3/4" X 3-1/4" X 7-8/8" MANGANESE RONSPOOT SMOOTH MANUFACTURER: ENDICOTT THIN BRICK & TLE LLC NO SUBSTITUTIONS WEBSITE: WWW.ENDICOTT.COM		
CMU-1	8" BURNISHED CMU AMCOM CONCRETE PRODUCTS LLC, 951-ONXY		
CMU-2	4" SPLIT FACE CMU		
EXTERIOR PAINT	COLOR NUMBER	PRODUCT NAME	
PT-11	SW 6079	SHERWIN WILLIAMS	
PT-54		SHERWIN WILLIAMS	
PT-67	SW 7029	SHERWIN WILLIAMS	
PT-68	SW 7600	SHERWIN WILLIAMS	
PT-69	SW 9100	SHERWIN WILLIAMS	
ALUMINUM BRACK METAL			
MT-19	METAL COPING COLOR: COPPER BROWN MANUFACTURER: BERRIDGE		
MT-20	CORRUGATED METAL PANEL COLOR: MANSARD BROWN MANUFACTURER: BERRIDGE		
STOREFRONT			
SF-01	8' STOREFRONT MATCH SHEETS TURKISH COFFEE		
FIBER CEMENT SIDING	COLOR	FINISH	MANUFACTURER
CB-06	SMOOTH BOARD SIDING PRIMED FOR PAINTING, HARD EPANEL SELECT CEDAR MILL MANUFACTURER: JAMES HARDE		
CB-07	ROUGH SAWN SIDING COLOR: ROUGH SAWN, ESPRESSO # AWP3030 MANUFACTURER: NICHHA USA, INC CONTACT: (770) 835-9468		



Mark S. Salopek, LLC
3638 West Galloway Drive
Richfield, OH 44286
330.572.2112 330.572.2102

BLOOMIN BRANDS
HIALEAH, FL - OUTBACK STEAKHOUSE
1751 W 48TH STREET
HIALEAH, FLORIDA 33012

SHEET ISSUE:
OUT TO PERMIT: 3/21/19

PRINCIPAL IN CHARGE: JC
PROJECT ARCHITECT: MS
DRAWN BY: TB

SHEET TITLE:
ELEVATIONS

SHEET NO. PROJ. NO.
2018231.29

A300