

ABBREVIATIONS LIST

ABBREVIATION NOTES:

- A. GENERALLY TERMS ARE SPELLED OUT AND ABBREVIATIONS USED ONLY TO REDUCE TIME AND SPACE OR WHERE APPROPRIATE OR TO IMPROVE CLARITY.
B. ABBREVIATIONS LISTED BELOW APPLY TO THE ARCHITECTURAL DRAWINGS ONLY. REFER TO DRAWINGS BY OTHER TRADES FOR ABBREVIATIONS USED ON OTHER TRADES DRAWINGS.
C. ABBREVIATIONS LISTED HERE ARE BASED ON THE NATIONAL CAD STANDARD MODULE 5. REFER TO THE NCS FOR ABBREVIATIONS SHOWN ON THE DRAWINGS THAT ARE NOT LISTED HERE. WHERE MULTIPLE TERMS EXIST FOR THE ABBREVIATION SHOWN, THE TERM REFERENCED IN THE LIST BELOW SHALL BE USED.

Table of abbreviations including: AC (AIR CONDITION), ABN (ARCHITECT ENGINEER), ABS (ACRYLONITRILE BUTADIENE STYRENE), ACC (ACCESSIBLE), ACOS (ACOUSTICAL INSULATION), etc.

Table of abbreviations including: FH (FIRE HOSE), FIN (FINISH FLOOR), FIN GR (FINISH GRADE), FINT (FLOOR FINISH), FL (FLOORLINE), FOP (FINISHED OPENING), etc.

STANDARD GRAPHICS AND SYMBOLS

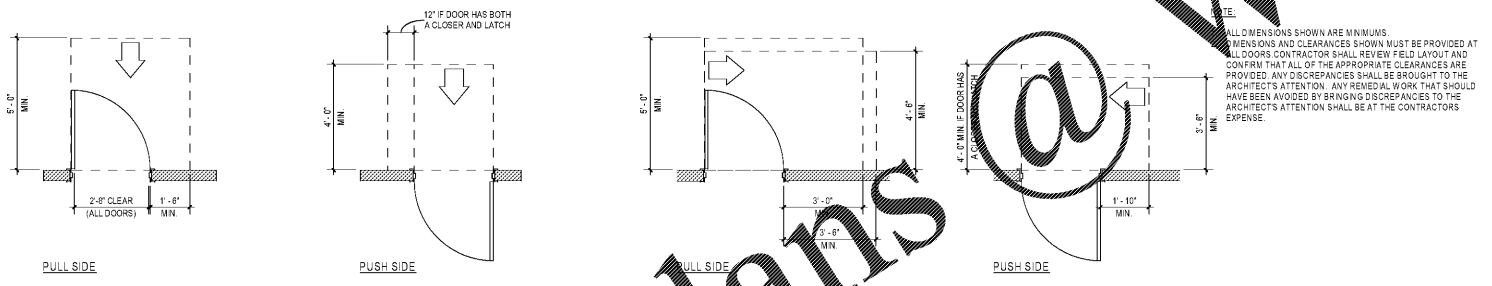
Diagram showing various symbols for line styles, annotations, view references, and callouts. Includes sections for LINE STYLES, LINE TYPES, ANNOTATIONS, VIEW REFERENCE, and ROOM TAGS.



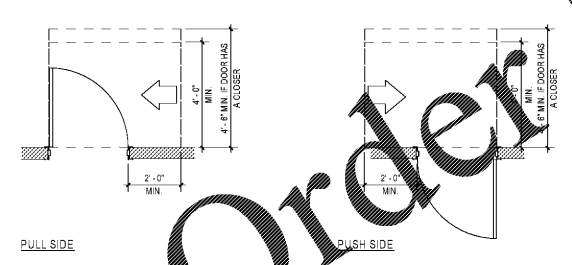
Mark S. Salopek, LLC
3638 West Gateway Drive
Riverview, FL 33569
330.572.2112 330.572.2102

BLOOMING BRANDS
HIALEAH, FL - OUTBACK STEAKHOUSE
1751 W 48TH STREET
HIALEAH, FLORIDA 33012

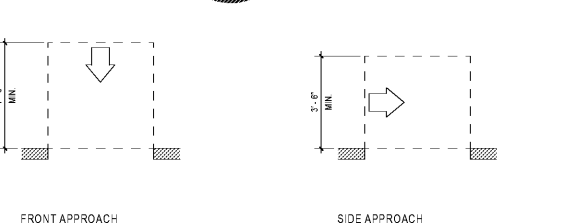
MANEUVERING CLEARANCES AT DOOR



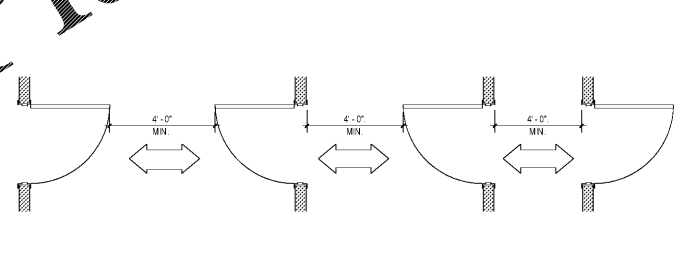
FRONT APPROACHES



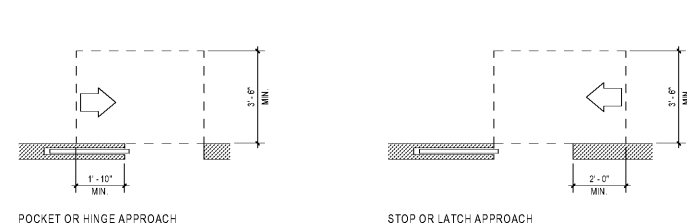
LATCH SIDE APPROACHES



HINGE SIDE APPROACHES

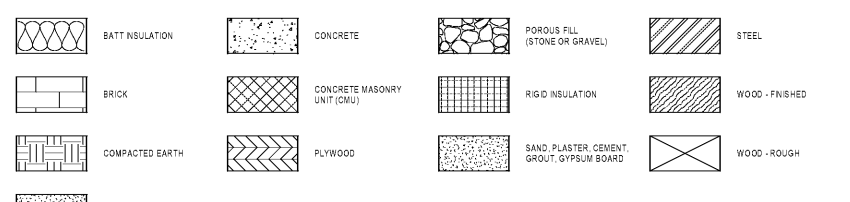


DOORS IN A SERIES

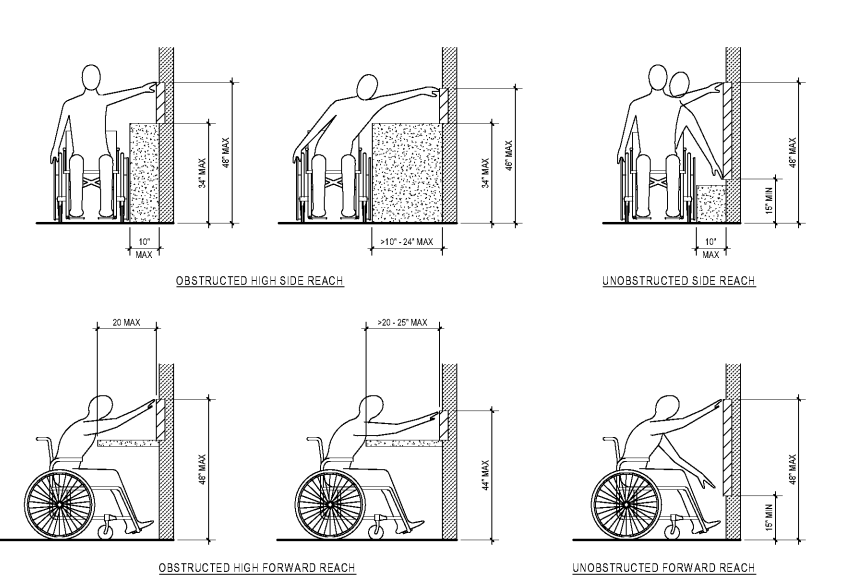


DOORWAY W/O DOORS, SLIDING DOORS, AND FOLDING DOORS

TYPICAL MATERIALS



REACH RANGES



SHEET ISSUE:
OUT TO PERMIT:
3/21/19

PRINCIPAL IN CHARGE: JC
PROJECT ARCHITECT: MS
DRAWN BY: TB
SHEET TITLE:
ABBREVIATIONS, SYMBOLS AND LEGENDS

SHEET NO:
PROJ NO:
201821.29

A001