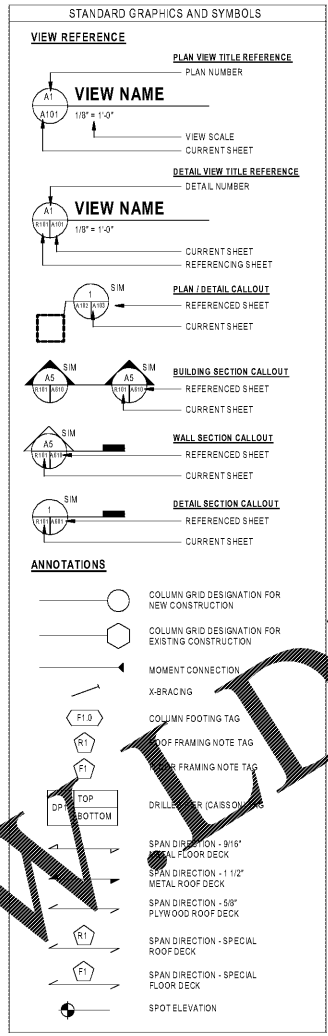


Order Plans @ [www.LDinline.com](http://www.LDinline.com)



ABBREVIATIONS		ABBREVIATIONS	
Abbreviation	Description	Abbreviation	Description
AI	Existing	GA	Gauge
A.B.	Anchor Bolt	GB	Grade Beam
A.F.F.	Above Finish Floor	H.C.	Horizontal
ANCH	Anchor	HDRZ	Horizontal
ARCH	Architectural	HP	Horizontal
B.F.E.	Bottom of Footing Elevation	INT	Interior
B.L.E.	Back Ledge Elevation	J.B.E.	Joint Bearing Elevation
B.S.E.	Back/Block Seat Elevation	JT	Joint
B.D.C.	Bidding	L.G.M.	Light Gauge Metal Framing
B.L.G.	Blocking	L.L.	Live Load
BM	Beam	LLH	Long Leg Horizontal
BOT	Bottom	LLV	Long Leg Vertical
BRNG	Bearing	M.O.	Masonry Opening
C.M.U.	Concrete Masonry Unit	MAX	Maximum
CB	Concrete Block	MFG.	Manufacturer
CJ	Control/Construction Joint	MIN	Minimum
COL	Column	MTL	Meat
CONC	Concrete	O.C.	On Center
CONT.	Continuous	OPNG	Opening
CRW	Concrete Retaining Wall	OPR	Opening
CTR	Center	P.L.F.	Pounds Per Linear Foot
CTRD	Centered	P.S.F.	Pounds Per Square Foot
CWP	Concrete Wall Panel	P.S.I.	Pounds Per Square Inch
D.L.	Dead Load	P.T.	Pressure Foot
DR	Drain	R	Reinforcing
D.A.	Diameter	REF	Reference
DP	Drilled Pier	RENF	Reinforcing
DWG	Drawing	RECO	Reinforcing
E	Each	R.F.T.	Reinforcing
E.J.	Expansion Joint	S.Y.F.	Southward
E.N.	Edge Nailing	SCHL	Schedule
E.W.	Each Way	SECT	Section
EA	Each	S.M.	Shower
ELEV.	Elevation	STFF	Stiffener
EXST	Existing	STL	Steel
EXP	Expansion	STR	Structural
EXT	Exterior	T.B.E.	Truss Bearing Elevation
F	Floor Framing	T.F.E.	Top of Footing Elevation
F.F.E.	Finish Floor Elevation	T.L.	Total Load
F.M.	Finish Mailing	T.S.E.	Top of Steel Elevation
F.S.	Finish Shop	T.W.E.	Top of Wall Elevation
F.V.	Finish Vinyl	TYP	Typical
FDN.	Foundation	U.N.O.	Unless Noted Otherwise
FR	Footing	VERT	Vertical
FRM	Framing	WD	Wood
G.B.	Grade Beam	WWF	Welded Wire Fabric

**LINTEL SCHEDULE**

Nominal Masonry Size	Masonry Opening (M.O.) Width			
	>3' to 2'-0"	>2'-0" to 4'-0"	>4'-0" to 6'-0"	>6'-0" to 11'-0"
4" CMU	PLATE 11/4"x3 1/4"	L3 1/2"x3 1/2"x1/4"	L4"x3"x3"	L5"x3 1/2"x3/8" LLV
6" CMU	8"x8" HIGH LINTEL (1) #5	8"x8" HIGH LINTEL w/ (1) #5	8"x16" HIGH LINTEL w/ (2) #5	8"x32" HIGH LINTEL w/ (2) #5 T&B
8" CMU	8"x8" HIGH LINTEL (1) #5	8"x16" HIGH LINTEL w/ (1) #5	8"x16" HIGH LINTEL w/ (2) #5	8"x32" HIGH LINTEL w/ (2) #5 T&B
12" CMU	12"x8" HIGH LINTEL (2) #5	12"x8" HIGH LINTEL w/ (2) #5	12"x16" HIGH LINTEL w/ (2) #5	12"x32" HIGH LINTEL w/ (2) #5 T&B

- ALL STEEL LINTELS SHALL HAVE MIN. 8" BEARING AT EACH END.
- LINTEL BLOCKS SHALL HAVE CONTINUOUS GRADE 60 REINFORCING STEEL AT 1"12" FROM BOTTOM FACE OF BLOCK. SIZE OF REINFORCEMENT SHALL BE AS SHOWN ON SCHEDULE. FULL BLOCK WITH 200# PS GROUT.
- CONTRACTOR SHALL COORDINATE WITH ARCHITECTURAL, MECHANICAL AND ELECTRICAL DRAWINGS AND PROVIDE LINTELS FOR OPENINGS PER ABOVE SCHEDULE FOR OTHER MISC. STEEL LINTELS NOT SHOWN ON STRUCTURAL DRAWINGS AND SHALL INCLUDE WEIGHT IN THEIR BASE BID.
- PROVIDE LINTEL BLOCKS FOR LINTELS.

**COLD-FORMED HEADER SCHEDULE (EXTERIOR WALLS ONLY)**

Nominal Wall Size	Rough Opening (R.O.) Width	
	>4'-0" to 6'-0"	>6'-0" to 8'-0"
6" WALL		
STUDS	(2) 6008162-64 STUDS	
TRACKS	(2) 6007200-54 TRACKS	

1. SEE A119204 FOR TYPICAL HEADER DETAILS.

**GRAPHICAL COLUMN SCHEDULE**

Column Locations	01 FIRST FLOOR 0'-0"	01 FIRST FLOOR 0'-0"	01 FIRST FLOOR 0'-0"	01 FIRST FLOOR 0'-0"	01 FIRST FLOOR 0'-0"
A-1, A-2, C-1	B-3	B-5, D-5, E-5	B-6	F-4	

**COLUMN FOOTING SCHEDULE**

Mark	Size	Reinforcing	Remarks
F3.0	3'-0" x 3'-0" x 1'-0"	(4) #5 E.W., TOP & BOTTOM	
F5.0	5'-0" x 5'-0" x 1'-0"	(8) #5 E.W., TOP & BOTTOM	
F5.5	5'-6" x 5'-6" x 1'-4"	(8) #5 E.W., TOP & BOTTOM	

**COLUMN BASE PLATE SCHEDULE**

Grid Mark	Base Plate Size	Anchor Bolts
A-1	PL 3/4"x11"x11" WELD TO COL. w/1/4" FILLET WELD ALL AROUND	(4) 3/4" DIA. A58 ALL-THREADED RODS w/ NUT @ TOP & BOTTOM w/ MIN. 8" EMBED.
A-2	PL 3/4"x11"x11" WELD TO COL. w/1/4" FILLET WELD ALL AROUND	(4) 3/4" DIA. A58 ALL-THREADED RODS w/ NUT @ TOP & BOTTOM w/ MIN. 8" EMBED.
B-3	PL 3/4"x11"x11" WELD TO COL. w/1/4" FILLET WELD ALL AROUND	(4) 3/4" DIA. A58 ALL-THREADED RODS w/ NUT @ TOP & BOTTOM w/ MIN. 8" EMBED.
B-5	PL 3/4"x11"x11" WELD TO COL. w/1/4" FILLET WELD ALL AROUND	(4) 3/4" DIA. A58 ALL-THREADED RODS w/ NUT @ TOP & BOTTOM w/ MIN. 8" EMBED.
B-6	PL 3/4"x11"x11" WELD TO COL. w/1/4" FILLET WELD ALL AROUND	(4) 3/4" DIA. A58 ALL-THREADED RODS w/ NUT @ TOP & BOTTOM w/ MIN. 8" EMBED.
C-1	PL 3/4"x11"x11" WELD TO COL. w/1/4" FILLET WELD ALL AROUND	(4) 3/4" DIA. A58 ALL-THREADED RODS w/ NUT @ TOP & BOTTOM w/ MIN. 8" EMBED.
D-5	PL 3/4"x11"x11" WELD TO COL. w/1/4" FILLET WELD ALL AROUND	(4) 3/4" DIA. A58 ALL-THREADED RODS w/ NUT @ TOP & BOTTOM w/ MIN. 8" EMBED.
E-5	PL 3/4"x11"x11" WELD TO COL. w/1/4" FILLET WELD ALL AROUND	(4) 3/4" DIA. A58 ALL-THREADED RODS w/ NUT @ TOP & BOTTOM w/ MIN. 8" EMBED.
F-4	PL 3/4"x11"x11" WELD TO COL. w/1/4" FILLET WELD ALL AROUND	(4) 3/4" DIA. A58 ALL-THREADED RODS w/ NUT @ TOP & BOTTOM w/ MIN. 8" EMBED.



BLOOMING BRANDS

HIALEAH, FL - OUTBACK STEAKHOUSE

1751 W 49TH STREET  
HIALEAH, FLORIDA 33012

SHEET ISSUE

OUT TO PERMIT: 3/21/19

PRINCIPAL IN CHARGE: JC

PROJECT ARCHITECT: MS

DRAWN BY: JCG

SHEET TITLE: LEGENDS AND SCHEDULES

SHEET NO: S002

PROJ. NO: 2018231.29