

SHEET KEYNOTES

- PROVIDE (2) 3-A-4B-C (M/MUM) RATED FIRE EXTINGUISHERS. INSTALL PER MANF'S INSTRUCTIONS IN ACCORDANCE WITH CURRENT NFPA 10 AND/OR LOCAL FIRE MARSHAL'S INSTRUCTIONS. PROVIDE SEMI-RECESSED CABINET PER DETAIL (SMB2) PAINT CABINET TO MATCH WALL FINISH MATERIAL.
- PROVIDE (2) CLASS K 2A-9-CX PORTABLE FIRE EXTINGUISHERS. INSTALL PER MANF'S INSTRUCTIONS IN ACCORDANCE WITH CURRENT NFPA 10 AND/OR LOCAL FIRE MARSHAL'S INSTRUCTIONS. PROVIDE MANF'S RECOMMENDED MOUNTING BRACKETS AND HARDWARE.
- PROVIDE AN OCCUPANT LOAD SIGN, "MAXIMUM CAPACITY" - 289 PERSONS. GO TO VERIFY THE EXACT LOCATION AND PROPER WORDING WITH THE LOCAL FIRE DEPARTMENT HAVING JURISDICTION. A "NO SMOKING" SIGN SHALL ALSO BE PROVIDED.
- PROVIDE EXIT DOOR TACTILE SIGNAGE IN ACCORDANCE WITH NFPA 101 7.10.1.3. SIGNS ARE TO BE 4" X 4" READING "EXIT" AND INCLUDING BRAILLE TEXT. SIGNS TO BE IN ACCORDANCE WITH THE REQUIREMENTS OF ICCANSI A117.1. SIGNS TO BE MOUNTED BETWEEN 48" & 60" AFF TO THE CENTER AND SHALL BE LOCATED TO THE LATCH SIDE OF SINGLE DOORS AND TO THE RIGHT SIDE OF DOUBLE DOORS. BEFORE INSTALLATION VERIFY THE SIGNAGE TYPE AND LOCATION WITH THE FIRE MARSHAL.

LIFE SAFETY PLAN GENERAL NOTES

- REFERENCE ELECTRICAL DRAWINGS FOR EMERGENCY AND EXIT LIGHTING.
- FIRE EXTINGUISHER SIZE, TYPE, QUANTITY AND FINAL LOCATION TO BE COORDINATED WITH THE LOCAL FIRE MARSHAL.
- ACCESSIBLE AISLE WIDTHS ARE TO BACK OF CHAIR @ 19" FROM EDGE OF TABLE.

GENERAL CONTRACTOR NOTE:
THE FOLLOWING PERMITS ARE REQUIRED BY THE CITY OF TAMPA, FIRE MARSHAL'S OFFICE. RELEVANT SUBCONTRACTORS SHALL BE RESPONSIBLE FOR DETERMINING SUBMITTAL REQUIREMENTS AND ENSURING PERMITS ARE IN HAND IN A TIMELY MANNER SO AS NOT TO IMPED THE WORK.

- FIRE ALARM SYSTEM
- FIRE EXTINGUISHING SYSTEM
- FIRE PROTECTION SYSTEM ABOVE GROUND
- FIRE PROTECTION SYSTEM BELOW GROUND

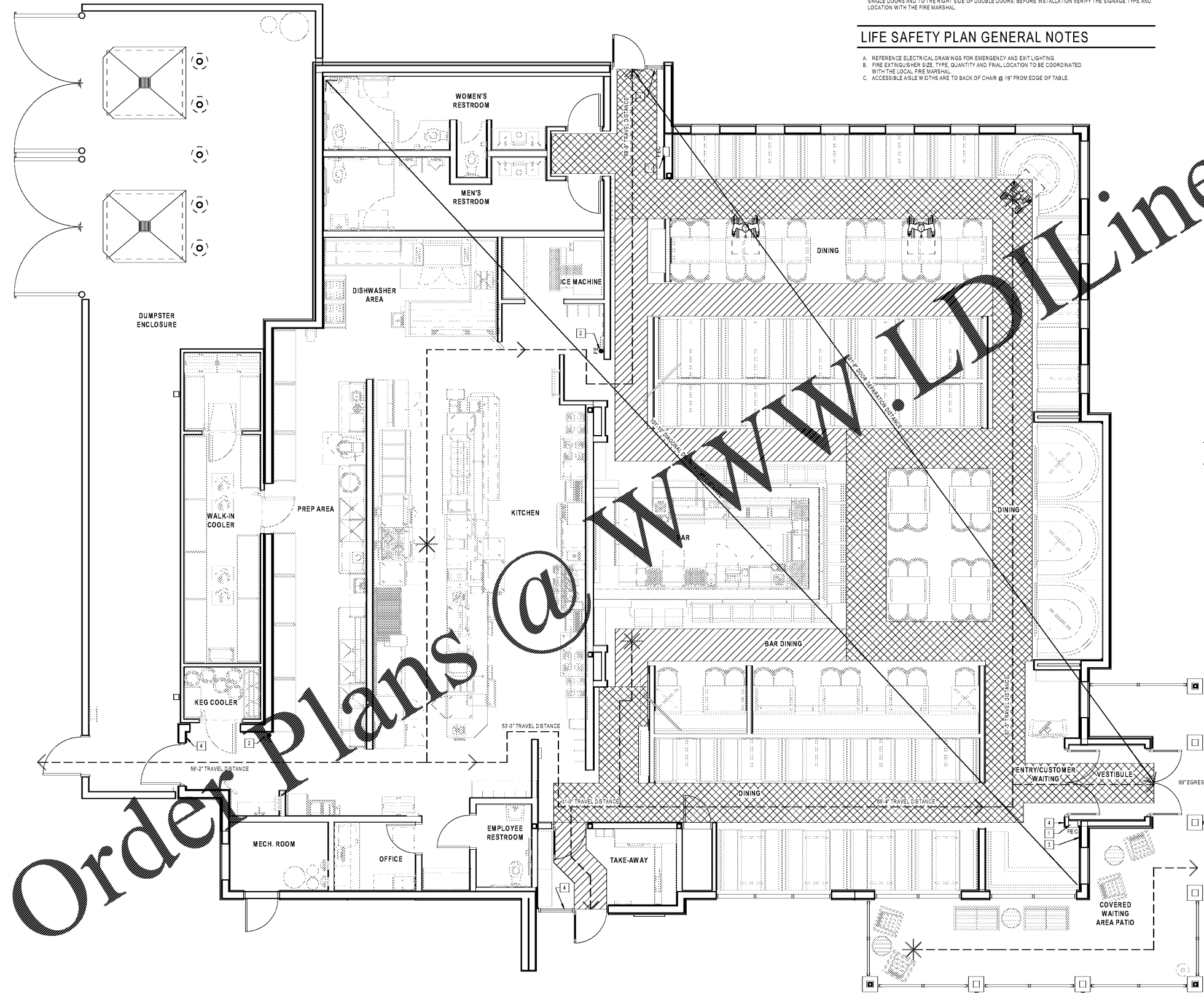
NOTE ALSO THAT A RADIOD ENHANCEMENT SYSTEM IS REQUIRED UNLESS A TEST IS PROVIDED SHOWING THE BUILDING IS COMPLIANT WITHOUT ONE.

OCCUPANCY CALCULATIONS:
WAITING AREA: OCCUPANTS: 86 S.F. / 3 = 29
WAITING BENCH: OCCUPANTS: 10-07/18 = 10
BAR SEATING LENGTH:
• RIGHT SIDE: 11'-8"
• FRONT: 11'-0"
• LEFT SIDE: 12'-0"
TOTAL BAR LENGTH: 38'-0"
OCCUPANTS: 38-07/18 = 24
FIXED SEATING (BOOTH):
• (8) BOOTH @ 10-0/14"
OCCUPANTS: 10-0/14"/18 X 3 = 21
FIXED SEATING (ROUND CORNER BOOTH):
• (1) BOOTH @ 7'-10"
OCCUPANTS: 7'-10"/18 = 5
FIXED SEATING (BOOTH):
• (8) 8' TOP X 2'-4"
• (4) 4' TOP X 2'-7"
OCCUPANTS: 6-0/72 = 12
FIXED SEATING (BAR SEATING):
• BAR SEAT: 28'-6"
OCCUPANTS: 28-6/18 = 20
NON-PARK SEATING:
• BAR SEATING: 42 S.F.
• BAR SEAT: 83 S.F.
• BAR SEATING: 172 S.F.
OCCUPANTS: 397 S.F. / 15 = 27
KITCHEN/FOOD PREP/TAKEAWAY/HOSTESS STAND/
OFFICE/BACK OF BAR AREAS (NOT INCLUDING FIXED EQUIPMENT): 992 S.F.
OCCUPANTS: 992 S.F. / 109 = 19
STORAGE AREAS/WALK-IN COOLER: 330 S.F.
OCCUPANTS: 330 S.F. / 509 = 2
TOTAL CALCULATED OCCUPANT LOAD: 274

NOTES:
1. OCCUPANT LOAD NOT CALCULATED FOR RESTROOMS, CIRCULATION PATHS, AND AREAS WITH FIXED EQUIPMENT.
2. BENCH SEATING FOR WAITING AND DINING INCLUDES A 12" KNEE SPACE IN FRONT OF THE BENCH. STANDING AND/OR UNCONCENTRATED SEATING SPACE IS CALCULATED FROM THAT POINT OUT.
3. TAKEAWAY AREA IS NOT A PUBLIC SPACE AND IS CONSIDERED KITCHEN/FOOD PREP AREA. RESTAURANT EMPLOYEES OBTAIN VEHICLE DESCRIPTION WITH ORDER, AND WHEN THE CUSTOMER ARRIVES, DELIVER ORDER TO THE VEHICLE.

LEGEND

- 38" ACCESSIBLE AISLE
- 48" ACCESSIBLE AISLE
- 48'-0" TRAVEL DISTANCE → EXIT PATH
- FIRE DEPARTMENT CONNECTION; REFERENCE FIRE PROTECTION PLAN
- FE FIRE EXTINGUISHER AND FIRE EXTINGUISHER IN CABINET; REFERENCE KEY NOTES THIS SHEET



LIFE SAFETY PLAN
1/8" = 1'-0"



Mark S. Salopek, LLC
3838 West Galloway Drive
Richfield, OH 44286
330.572.2112 330.572.2102

BLOOMING BRANDS
HIALEAH, FL - OUTBACK STEAKHOUSE
1751 W 48TH STREET
HIALEAH, FLORIDA 33012

SHEET ISSUE:
OUT TO PERMIT: 3/21/19

PRINCIPAL IN CHARGE: JC
PROJECT ARCHITECT: MS
DRAWN BY: CC
SHEET TITLE: LIFE SAFETY PLAN

SHEET NO. PROJ. NO. 2018201.29

G110