

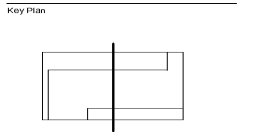


Hellmuth, Obata & Kassabaum, Inc.  
 191 Peachtree Street, NE, Suite 2250  
 Atlanta, GA 30303 USA  
 T+1 404 439 9000 F+1 404 439 9001

All reproduction & intellectual property rights reserved © 2019

In Association with

**TLC ENGINEERING**  
 255 S. Orange Avenue  
 Suite 1500  
 Orlando, FL 32801  
 P 407.841.0950  
 CDA REG. 022860  
 www.tlcengineering.com  
 TLC No. 118548  
 TXN005, L167206, C282A109



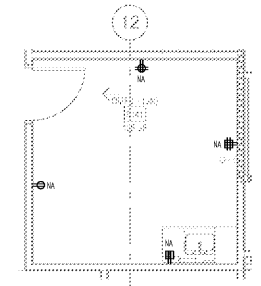
Professional Seal  
 Emory Neal Boothe, P.E.  
 Georgia License #PE039005

**NOT FOR  
 CONSTRUCTION**

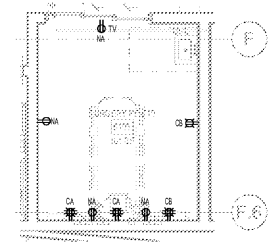
No.	Description	Date
1	ED - GMP	2019-07-03

Project No: 18.16013.00  
 Sheet Title  
**TYPICAL ROOMS**

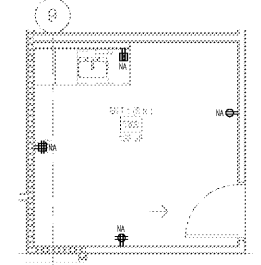
- GENERAL POWER PLAN NOTES:**
1. VERIFY AND COORDINATE EXACT ELECTRICAL REQUIREMENTS OF ALL EQUIPMENT WITH MANUFACTURER'S RECOMMENDATIONS PRIOR TO INSTALLATION OF EQUIPMENT. MODIFY LAYOUT AS REQUIRED PER MANUFACTURER'S SPACE REQUIREMENTS.
  2. REFER TO ARCHITECTURAL ELEVATIONS AND CASEWORK DRAWINGS FOR FINAL MOUNTING HEIGHTS AND INSTALLATION REQUIREMENTS OF ALL DEVICES. UNLESS NOTED OTHERWISE, ARCHITECTURAL ELEVATIONS SHALL DICTATE MOUNTING HEIGHTS OF ALL FIXTURES AND DEVICES.
  3. COORDINATE FINAL LOCATIONS OF ALL DIVISION 23 EQUIPMENT IN FIELD WITH DIVISION 23 EQUIPMENT. FIELD LOCATIONS SHALL DICTATE.
  4. COORDINATE MOUNTING HEIGHTS AND LOCATIONS OF ALL DEVICES WITH ARCHITECTURAL ELEVATIONS AND CASEWORK.
  5. CRITICAL BRANCH WIRING FROM ANY PANEL DOWNSTREAM OF AUTOMATIC TRANSFER SWITCHES ATS-C1 AND ATS-C2 SHALL NOT BE ON THE SAME RACEWAY. CONTRACTOR SHALL MAINTAIN SEPARATION OF THESE TRANSFER SWITCHES AND THEIR DISTRIBUTION ALL THE WAY TO THE LOADS.



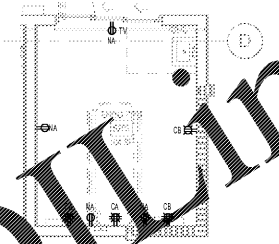
9 TYPICAL - LEVEL 6 - OMFS ROOM  
 1/4" = 1'-0"



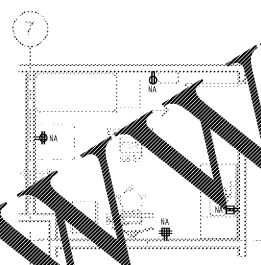
4 TYPICAL - LEVEL 5 - SURGERY PRE-POST ROOM  
 1/4" = 1'-0"



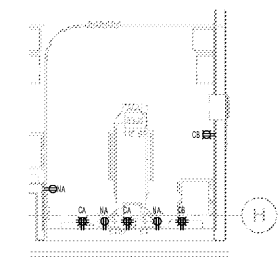
8 TYPICAL - LEVEL 6 - ENT ROOM  
 1/4" = 1'-0"



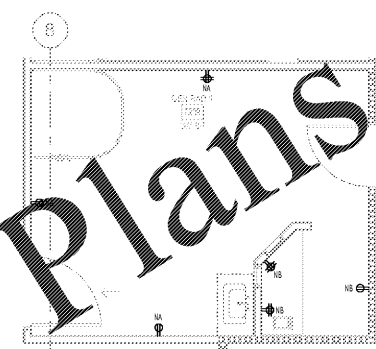
3 TYPICAL - LEVEL 5 - ENDO PRE-POST ROOM  
 1/4" = 1'-0"



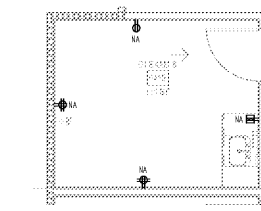
7 TYPICAL - LEVEL 6 - GEN SURG EXAM  
 1/4" = 1'-0"



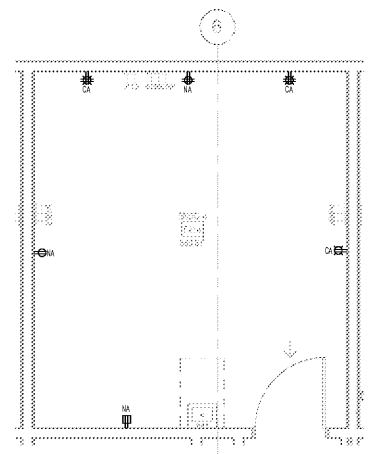
2 TYPICAL - LEVEL 5 - PACU ROOM  
 1/4" = 1'-0"



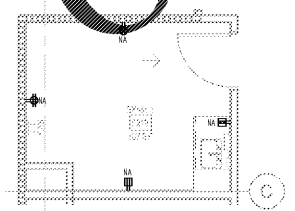
11 TYPICAL - LEVEL 7 - GEN RAD  
 1/4" = 1'-0"



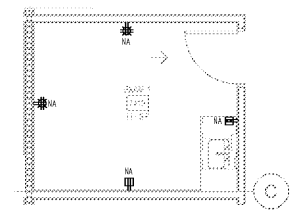
6 TYPICAL - LEVEL 6 - GI EXAM ROOM  
 1/4" = 1'-0"



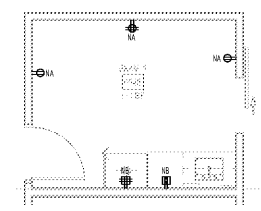
1 TYPICAL - LEVEL 5 - ENDO ROOM  
 1/4" = 1'-0"



12 TYPICAL - LEVEL 8 - EXAM ROOM  
 1/4" = 1'-0"



10 TYPICAL - LEVEL 7 - EXAM ROOM  
 1/4" = 1'-0"



5 TYPICAL - LEVEL 6 - EXAM ROOM  
 1/4" = 1'-0"

Order Plans @ [www.LDOnline.com](http://www.LDOnline.com)