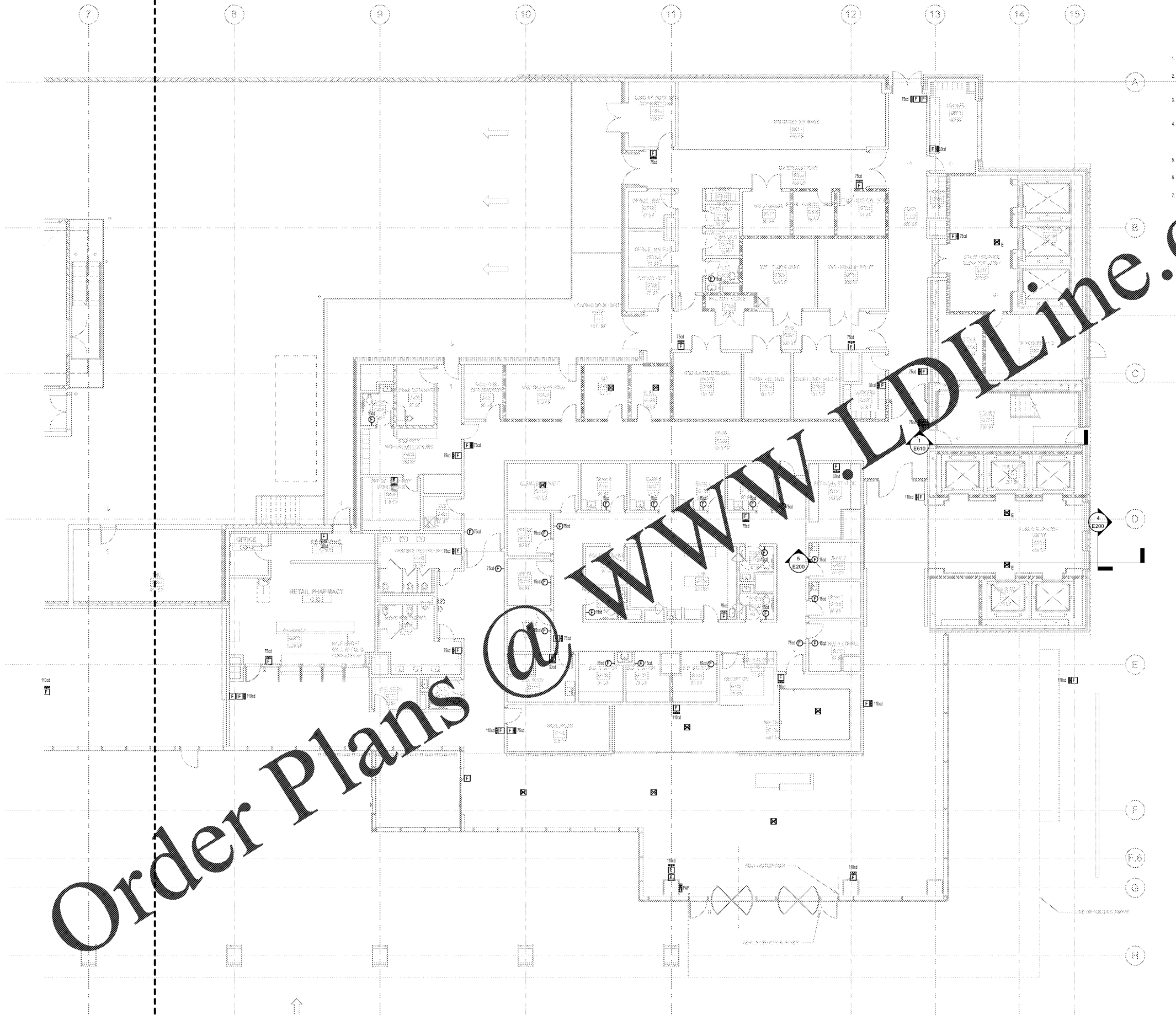


Order Plans @

WWW.LDILINE.COM



1 FLOOR PLAN - GROUND LEVEL - EAST - FIRE ALARM
1/8" = 1'-0"

- GENERAL FIRE ALARM PLAN NOTES
- REFER TO FIRE ALARM SYMBOL LEGEND FOR DETAILED REQUIREMENTS FOR ALL FIRE ALARM DEVICE INSTALLATIONS
 - REFER TO ARCHITECTURAL ELEVATIONS FOR FINAL MOUNTING HEIGHTS OF ALL DEVICES. UNLESS NOTED OTHERWISE, ARCHITECTURAL ELEVATIONS SHALL Dictate MOUNTING HEIGHTS OF ALL DEVICES.
 - VERIFY AND COORDINATE ELECTRICAL REQUIREMENTS OF ALL EQUIPMENT WITH MANUFACTURER'S RECOMMENDATIONS PRIOR TO INSTALLATION OF EQUIPMENT.
 - FIRE ALARM CONTRACTOR SHALL FULLY TEST ALL INITIATING DEVICES WITHIN THE SMOKE COMPARTMENT TO ENSURE THAT ALL DEVICES ARE CORRECTLY INITIATING THE CORRECT SMOKE COMPARTMENT IDENTIFICATION, AS SHOWN ON THE LIFE SAFETY PLANS. CONTRACTOR SHALL CORRECT ANY AND ALL DISCREPANCIES FOUND DURING SAID TESTING PROCEDURE.
 - REFER TO THE FIRE ALARM SYSTEM RISER DIAGRAMS FOR ADDITIONAL INFORMATION.
 - UNLESS NOTED OTHERWISE, ALL SMOKE COMPARTMENTS SHALL BE AS A FIRE EVACUATION ZONE.
 - REFER TO ALL DRAWINGS FOR QUANTITIES AND LOCATIONS OF ALL FIRE ALARM DEVICES, SMOKE DETECTOR SMOKE DETECTOR. THESE DEVICES SHALL BE PROVIDED BY THE FIRE ALARM CONTRACTOR, UNLESS OTHERWISE NOTED ON THE FIRE ALARM DRAWINGS OR NOT.
 - REFER TO ALL DRAWINGS FOR QUANTITIES AND LOCATIONS OF ALL FLOW AND FLOW INTERRUPTERS. THESE DEVICES SHALL BE PROVIDED BY THE FIRE ALARM CONTRACTOR, UNLESS OTHERWISE NOTED ON THE FIRE ALARM DRAWINGS OR NOT.

KEY NOTES



Project
**THE CENTER FOR
ADVANCED SURGICAL
SERVICES (CASS)**
88 JESSE HILL DRIVE
ATLANTA, GA 30303

Prepared For
GRADY HEALTH SYSTEM
80 JESSE HILL DR. SE
ATLANTA, GA 30303

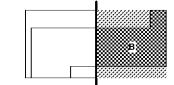


Hellmuth, Obata & Kassabaum, Inc.
191 Peachtree Street, NE, Suite 2250
Atlanta, GA 30303 USA
T+1 404 439 9000 F+1 404 439 9001

All reproduction & intellectual property rights reserved © 2019
in Association with

TLC ENGINEERING
256 S. Orange Avenue
Suite 1800
Orlando, FL 32801
P 407.841.0802
COA PE#022860
www.tlcengineering.com
TLC No. 118548

Key Plan



Professional Seal
Emory Neal Boothe, P.E.
Georgia License #PE039005

**NOT FOR
CONSTRUCTION**

No.	Description	Date
1	DD - GMP	2019-07-03

Project No: 18.16013.00
Sheet Title

**GROUND FLOOR PLAN
- EAST - FIRE ALARM**

Original is 20 x 42. Do not scale contents of this drawing.
Sheet Number

E400B