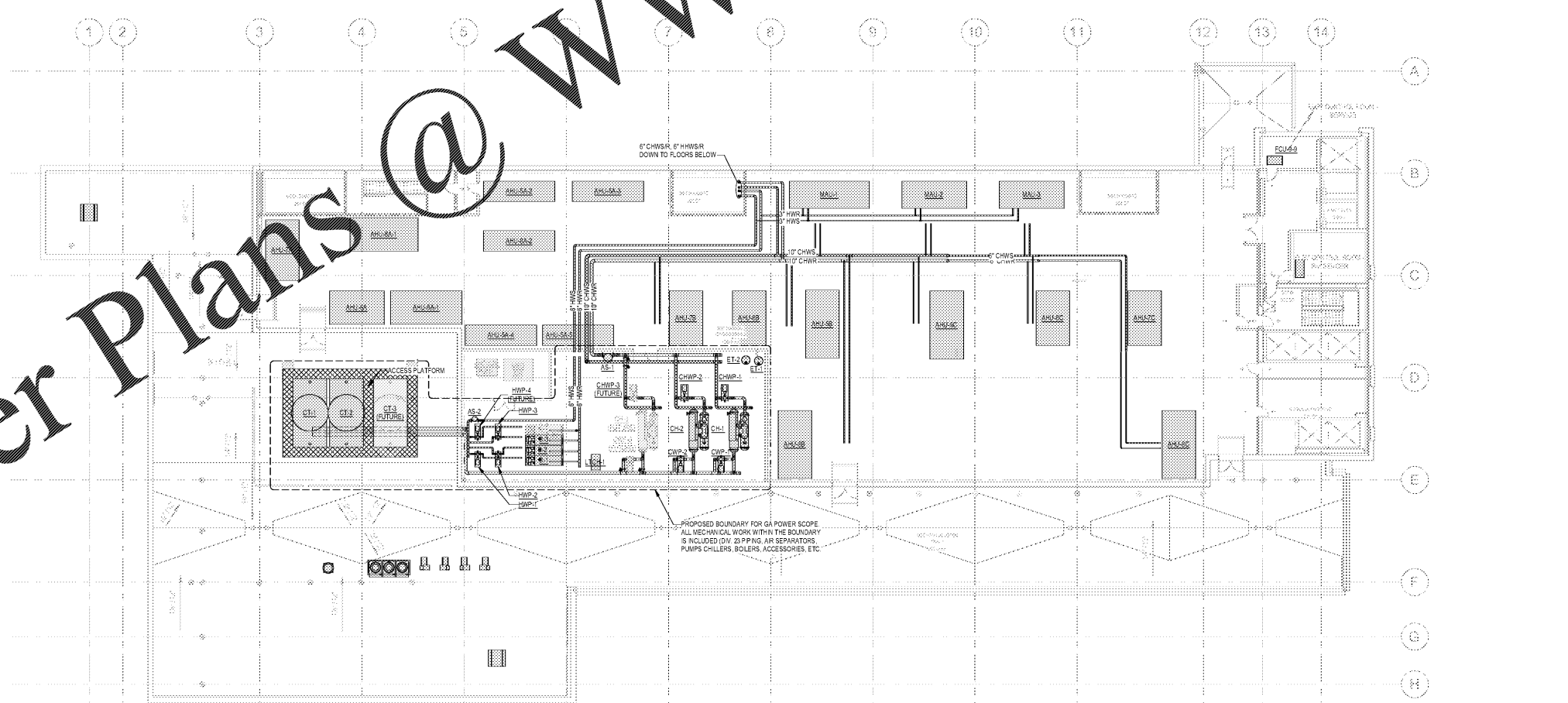


1 OVERALL FLOOR PLAN - PENTHOUSE - LEVEL 9 - DUCTWORK
1/16" = 1'-0"



2 OVERALL FLOOR PLAN - PENTHOUSE - LEVEL 9 - PIPING
1/16" = 1'-0"

- KEYNOTES**
- 1 PROVIDE LOUVER AT TOP OF ELEVATOR HOISTWAY. LOUVER SHALL HAVE 12SF FREE AREA.
 - 2 PROVIDE LOUVER AT TOP OF ELEVATOR HOISTWAY. LOUVER SHALL HAVE 12SF FREE AREA.
 - 3 PROVIDE NORMALLY OPEN MOTORIZED DAMPER. DAMPER SHALL OPEN ON FIRE ALARM OR SMOKE DETECTED IN HOISTWAY OR ELEVATOR LOBBIES.



Project
**THE CENTER FOR
 ADVANCED SURGICAL
 SERVICES (CASS)**
 88 JESSE HILL DRIVE
 ATLANTA, GA 30303

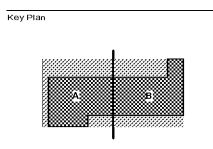
Prepared For
GRADY HEALTH SYSTEM
 80 JESSE HILL DR. SE
 ATLANTA, GA 30303



Hellmuth, Obata & Kassabaum, Inc.
 191 Peachtree Street, NE, Suite 2250
 Atlanta, GA 30303 USA
 T+1 404 439 9000 F+1 404 439 9001

All reproduction & intellectual property rights reserved © 2019
 In Association with

TLC ENGINEERING
 254 S. Orange Avenue
 Suite 1500
 Orlando, FL 32801
 P 407.841.0392
 F 407.841.0392
 CDA PEF02280
 www.tlc-engineers.com
 TLC No. 118548
 TPNW05, L16720N, C282A19



Professional Seal
 Benjamin Roseborough, P.E.
 Georgia License #PE036005

**NOT FOR
 CONSTRUCTION**

| No. | Description | Date |
|-----|-------------|------------|
| 1 | ED - GMP | 2019-07-03 |

Project No: 18.16013.00
 Sheet Title
**LEVEL 9 PENTHOUSE
 PLAN - OVERALL -
 MECHANICAL**

Original is 20 x 42. Do not scale contents of this drawing
 Sheet Number

M109

Order Plans @ www.LDline.com