

GENERAL NOTES

1. THIS FLOOR HAS NON-DUCTED RETURN AIR PLENUM.
2. PROVIDE ABOVE CEILING AIR TRANSFER OPENINGS IN FULL-HEIGHT WALLS TO FACILITATE AIR MOVEMENT IN PLENUM.
3. ALL TEBS INSTALLED WITHIN THE RETURN AIR PLENUM SHALL HAVE MAXIMUM FLAME SPREAD / SMOKE DEVELOPED RATINGS OF 25/50.

KEY NOTE

1. PROVIDE ACCESS PANEL IN PLenum BY CEILING ACCESS DOOR AND SMOKE DAMPER CONTROLS



Project
**THE CENTER FOR
 ADVANCED SURGICAL
 SERVICES (CASS)**
 88 JESSE HILL DRIVE
 ATLANTA, GA 30303

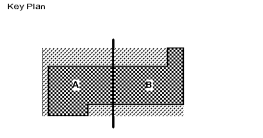
Prepared For
GRADY HEALTH SYSTEM
 80 JESSE HILL DR. SE
 ATLANTA, GA 30303



Hellmuth, Obata & Kassabaum, Inc.
 191 Peachtree Street, NE, Suite 2250
 Atlanta, GA 30303 USA
 T+1 404 439 9000 F+1 404 439 9001

All reproduction & intellectual property rights reserved © 2019
 in Association with

TLC ENGINEERING
 233 S. Orange Avenue
 Suite 1400
 Orlando, FL 32801
 P 407.841.0900
 COA PE032980
 www.tlc-engineering.com
 TLC No. 118549
 TPAWS, L16729N, C262A19



Professional Seal
 Benjamin Roseborough, P.E.
 Georgia License #PE036005

**NOT FOR
 CONSTRUCTION**

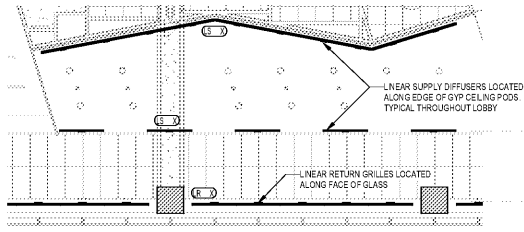
No.	Description	Date
1	ED - GMP	2019-07-03

Project No: 18.16013.00
 Sheet Title
**LEVEL 6 FLOOR PLAN -
 OVERALL -
 MECHANICAL**

Original is 30 x 42. Do not scale contents of this drawing
 Sheet Number

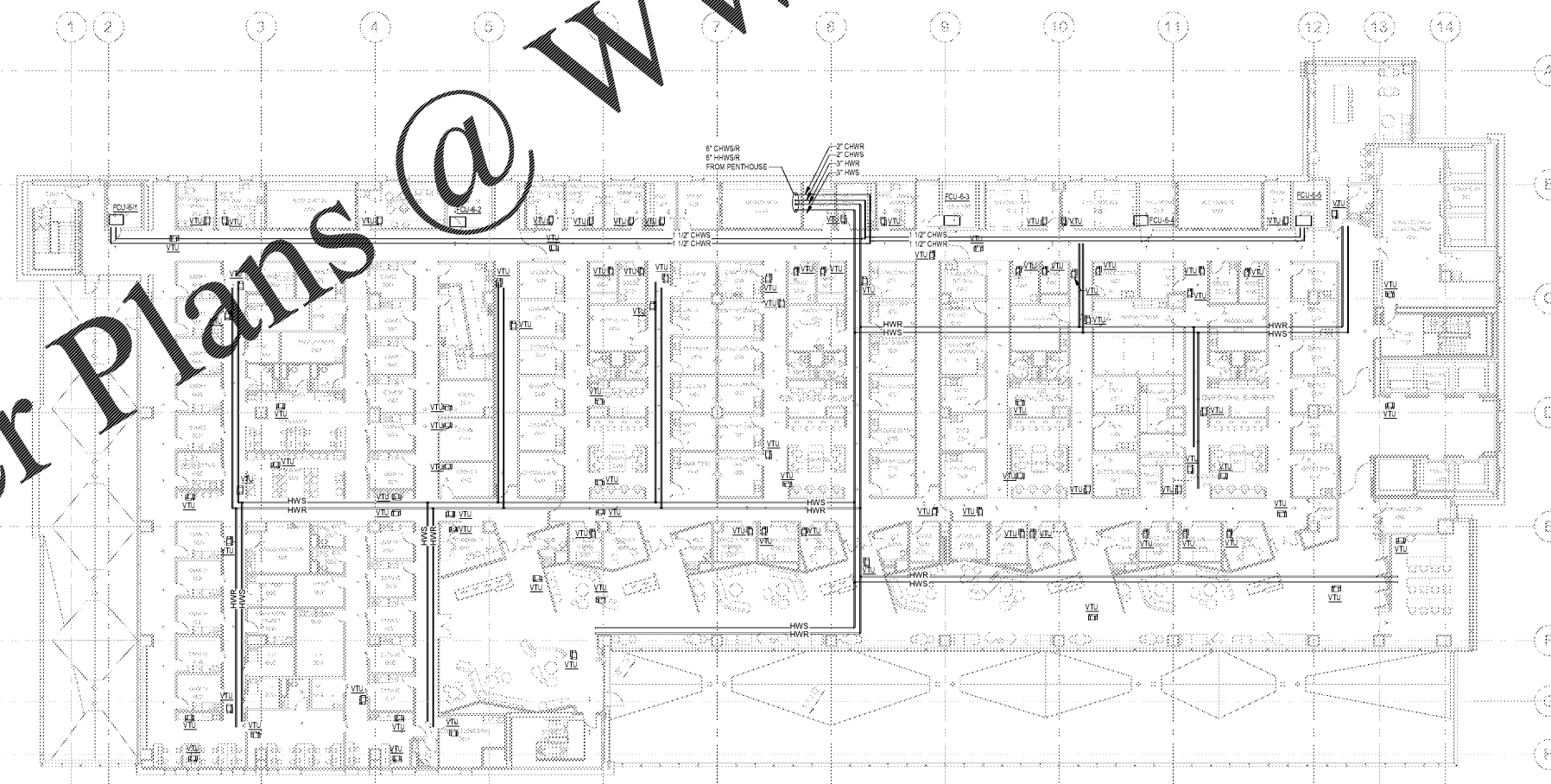
M106

3 LOBBY CEILING
 1/8" = 1'-0"



1 OVERALL FLOOR PLAN - LEVEL 6 - DUCTWORK
 1/16" = 1'-0"

2 OVERALL FLOOR PLAN - LEVEL 6 - PIPING
 1/16" = 1'-0"



Order Plans @ www.IDIline.com