

Project
**THE CENTER FOR
 ADVANCED SURGICAL
 SERVICES (CASS)**
 88 JESSE HILL DRIVE
 ATLANTA, GA 30303

Prepared For
GRADY HEALTH SYSTEM
 80 JESSE HILL DR. SE
 ATLANTA, GA 30303

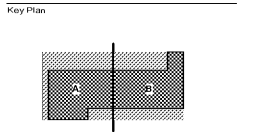


Hellmuth, Obata & Kassabaum, Inc.
 191 Peachtree Street, NE, Suite 2250
 Atlanta, GA 30303 USA
 T+1 404 439 9000 F+1 404 439 9001

All reproduction & intellectual property rights reserved © 2019

In Association with

TLC ENGINEERING
 255 S. Orange Avenue
 Suite 1400
 Orlando, FL 32801
 P: 407.841.0800
 F: 407.841.0800
 COA #PE1002890
 www.tlc-engineering.com
 TLC No. 118548
 TPNWS, L16729N, C282A19



Professional Seal
 Benjamin Roseborough, P.E.
 Georgia License #PE036005

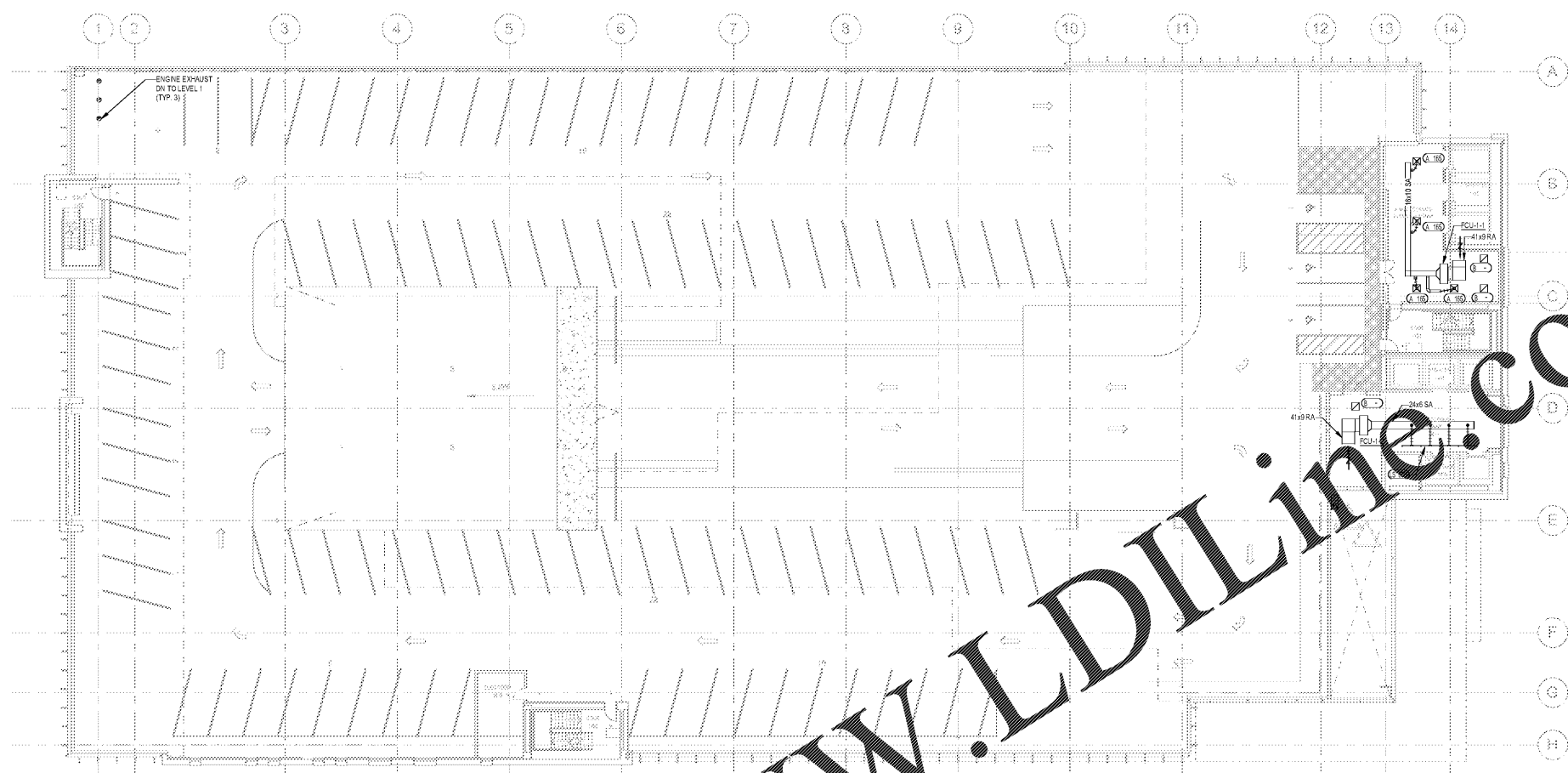
**NOT FOR
 CONSTRUCTION**

No.	Description	Date
1	ED - GWP	2019-07-03

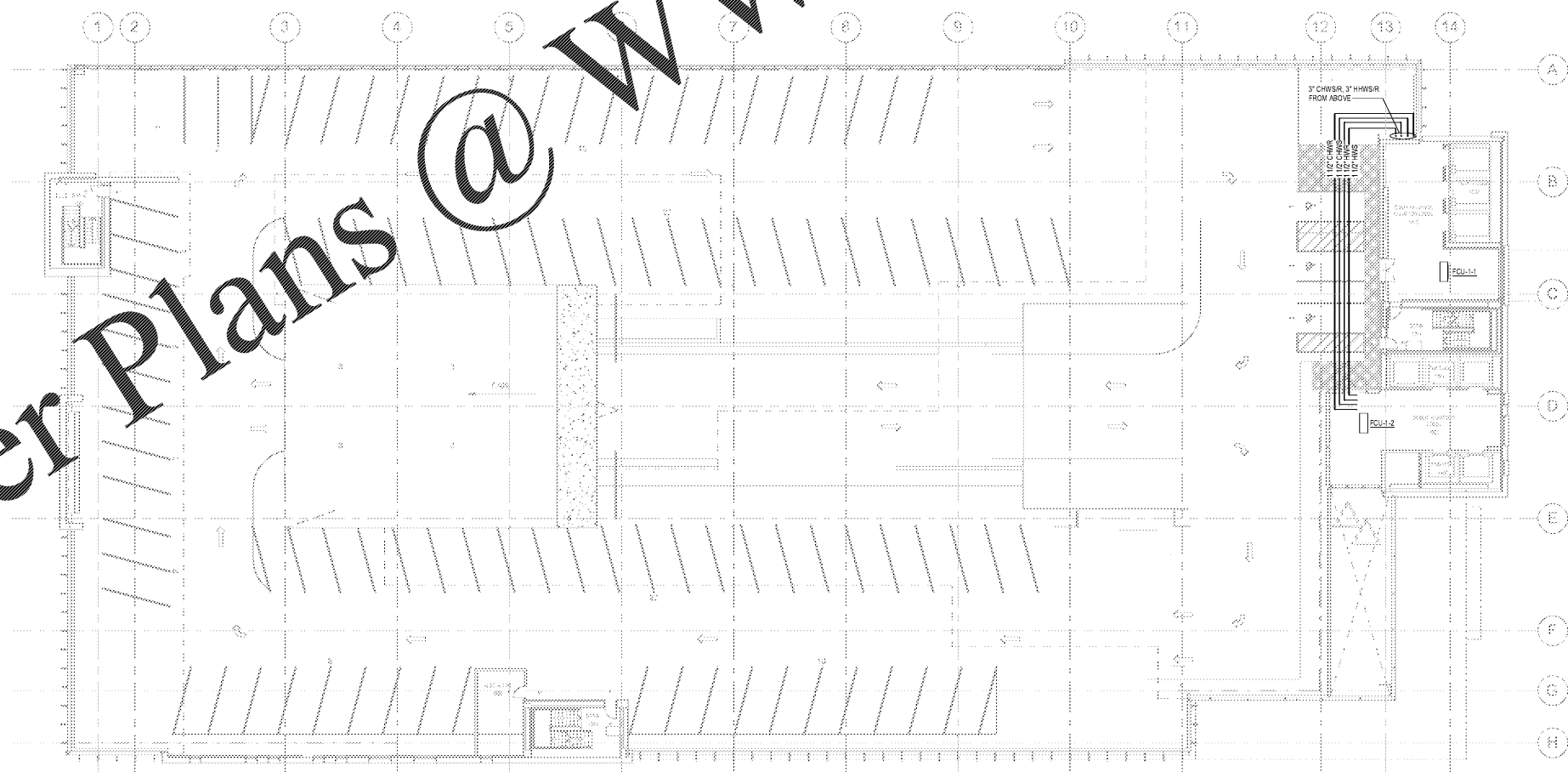
Project No: 18.16013.00
 Sheet Title
**LEVEL 1 FLOOR PLAN -
 OVERALL -
 MECHANICAL**

Original is 20 x 42. Do not scale contents of this drawing.
 Sheet Number

M101



1 OVERALL FLOOR PLAN - LEVEL 1 - DUCTWORK
 1/16" = 1'-0"



2 OVERALL FLOOR PLAN - LEVEL 1 - PIPING
 1/16" = 1'-0"

Order Plans @