

Project
**THE CENTER FOR
 ADVANCED SURGICAL
 SERVICES (CASS)**
 88 JESSE HILL DRIVE
 ATLANTA, GA 30303

Prepared For
GRADY HEALTH SYSTEM
 80 JESSE HILL DR. SE
 ATLANTA, GA 30303

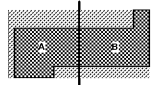


Hellmuth, Obata & Kassabaum, Inc.
 191 Peachtree Street, NE, Suite 2250
 Atlanta, GA 30303 USA
 T+1 404 439 9000 F+1 404 439 9001

All reproduction & intellectual property rights reserved ©
 2019
 In Association with

TLC ENGINEERING
 255 S. Orange Avenue
 Suite 1500
 Orlando, FL 32801
 P 407.841.0350
 CDA PEF022860
 www.tlc-engineers.com
 TLC No. 118548
 TPAWS, L167206, C282419

Key Plan



Professional Seal
 Benjamin Roseborough, P.E.
 Georgia License #PE036005

**NOT FOR
 CONSTRUCTION**

No.	Description	Date
1	ED - GMP	2019-07-03

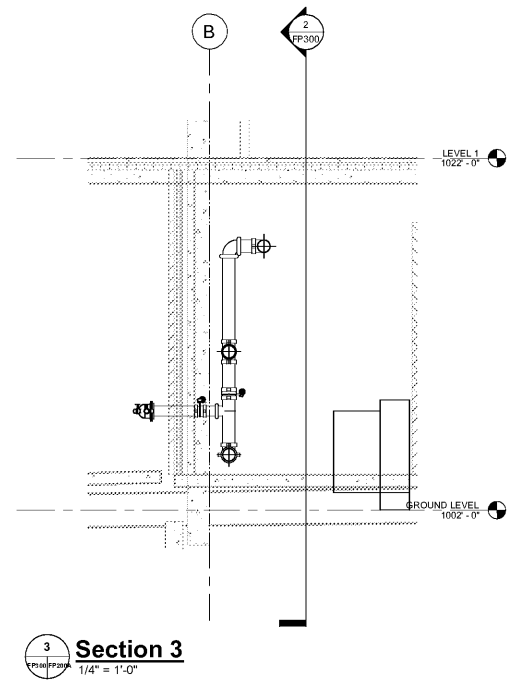
Project No: 18.16013.00

Sheet Title

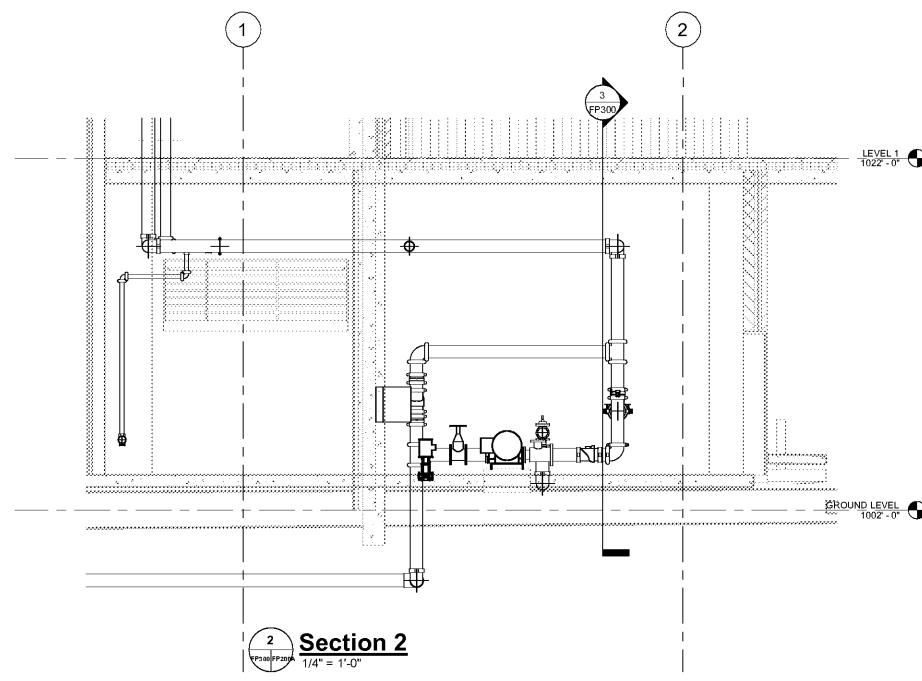
ENLARGED FIRE PUMP ROOM
 ROOM

Original is 20 x 42. Do not scale contents of this drawing.
 Sheet Number

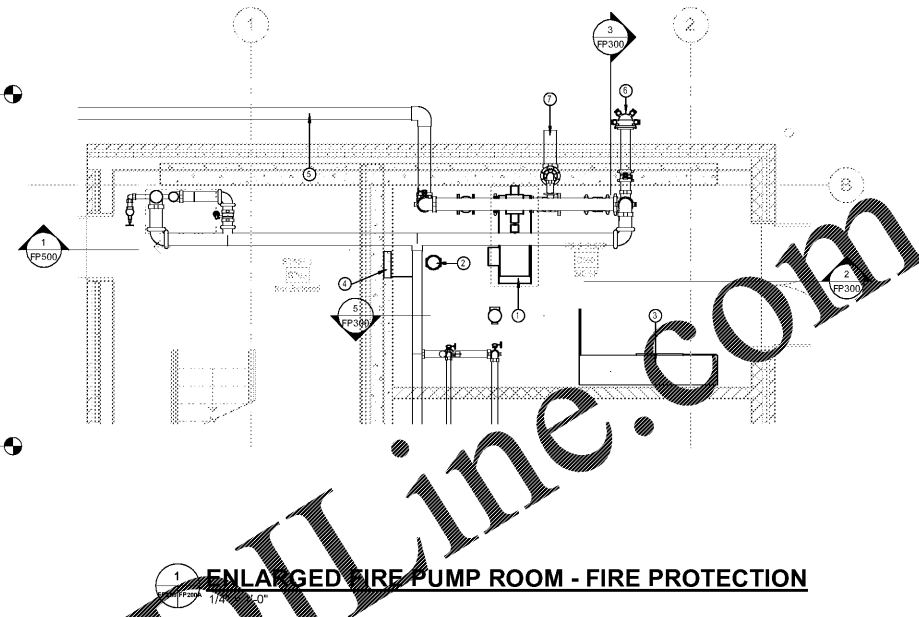
FP300



3 Section 3
 1/4" = 1'-0"



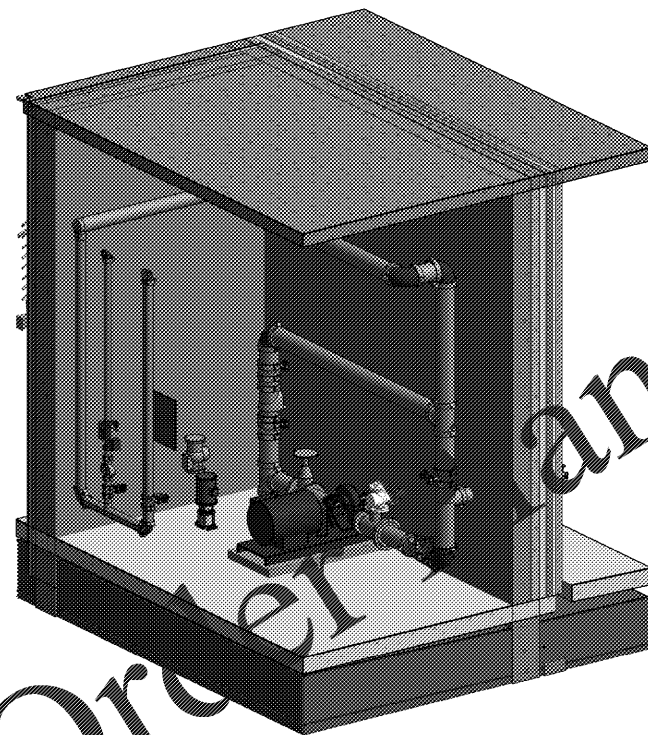
2 Section 2
 1/4" = 1'-0"



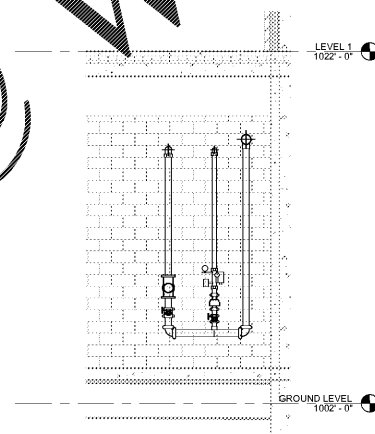
1 ENLARGED FIRE PUMP ROOM - FIRE PROTECTION
 1/4" = 1'-0"

FIRE PUMP SCHEDULE												
DESCRIPTION	MANUFACTURER	MODEL	SUCKING SIZE	DISCHARGE SIZE	DESIGN FLOW	DESIGN PRESSURE	HP	RPM	PUMP TYPE	VOLTS	PHASE	HEIGHT
Fire Pump - Horizontal	Aurora Pump	111C	8"	5"	1000 GPM	0.00 psi	150	3500	Split Case	480v	3	60
Jockey Pump - Vertical	Aurora Pump	20	1 1/4"	1 1/4"	20 GPM	0.00 psi	3	3450	Vertical Multi-Stage	480v	3	60

- FIRE PROTECTION KEYNOTES**
- 1 FIRE PUMP
 - 2 JOCKEY PUMP
 - 3 VARIABLE SPEED FIRE PUMP CONTROLLER W/ TRANSFER SWITCH
 - 4 JOCKEY PUMP CONTROLLER
 - 5 8" SUPPLY FROM CITY WATER MAIN INCASED IN CONCRETE
 - 6 8" 4-WAY VALVE TEST HEADER
 - 7 8" RELIEF LINE TO GRADE



4 Fire Pump



5 Section 10
 1/4" = 1'-0"