

PLUMBING KEYNOTES



Project
**THE CENTER FOR
 ADVANCED SURGICAL
 SERVICES (CASS)**
 88 JESSE HILL DRIVE
 ATLANTA, GA 30303

Prepared For
GRADY HEALTH SYSTEM
 80 JESSE HILL DR. SE
 ATLANTA, GA 30303



Helmuth, Obata & Kassabaum, Inc.
 191 Peachtree Street, NE, Suite 2250
 Atlanta, GA 30303 USA
 Tel: 404.438.9000 Fax: 404.438.9001

All reproduction & intellectual property rights reserved © 2019

In Association with

TLC ENGINEERING
 255 S. Orange Avenue
 Suite 1000
 Orlando, FL 32801
 Tel: 407.941.9000

CCA #PC020580
 www.tlc-engineering.com
 TLC No. 1185-48
 DESIGN. SYSTEM. CREATE.

Key Plan



Professional Seal
 Roosevelt Powell, P.E.
 Georgia License #PE21592

**NOT FOR
 CONSTRUCTION**

No.	Description	Date
1	DD - GMP	2019-07-01

1	SCHEMATIC DESIGN	2018-11-30
2	SCHEMATIC DESIGN - UPDATE	2019-03-19

Project No: **18.16013.00**
 Sheet Title

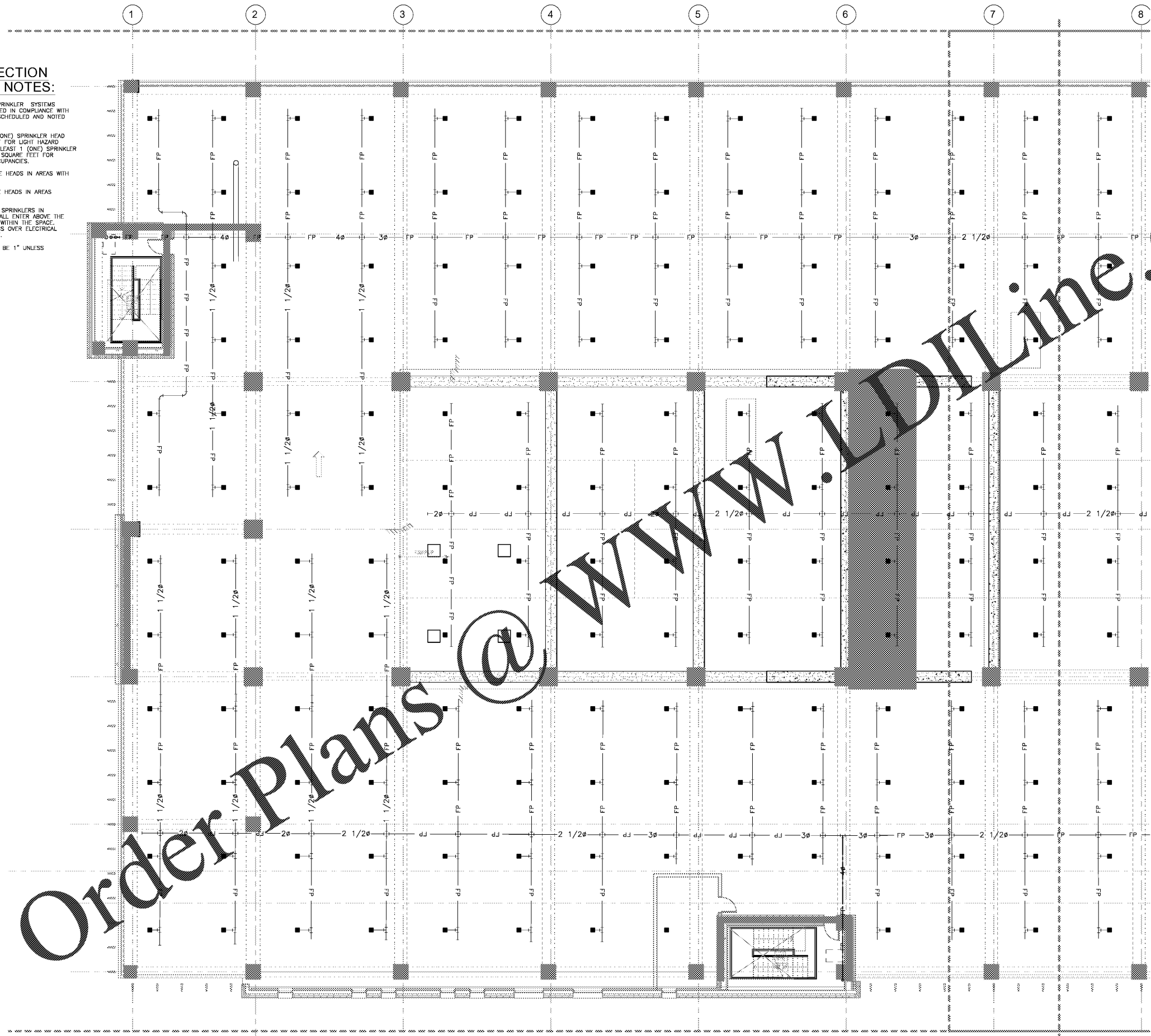
**LEVEL 1 FLOOR PLAN -
 WEST - FIRE
 PROTECTION**

Original is 30 x 42. Do not scale contents of this drawing.
 Sheet Number

FP211A

**FIRE PROTECTION
 GENERAL NOTES:**

1. PROVIDE AUTOMATIC SPRINKLER SYSTEMS HYDRAULICALLY DESIGNED IN COMPLIANCE WITH NFPA 13 FOR THE SCHEDULED AND NOTED DESIGN CRITERIA.
2. PROVIDE AT LEAST 1 (ONE) SPRINKLER HEAD PER 225 SQUARE FEET FOR LIGHT HAZARD OCCUPANCIES AND AT LEAST 1 (ONE) SPRINKLER HEAD FOR EVERY 130 SQUARE FEET FOR ORDINARY HAZARD OCCUPANCIES.
3. PROVIDE PENDANT TYPE HEADS IN AREAS WITH CEILINGS.
4. PROVIDE UPRIGHT TYPE HEADS IN AREAS WITHOUT CEILINGS.
5. BRANCHLINES SERVING SPRINKLERS IN ELECTRICAL ROOMS SHALL ENTER ABOVE THE DOOR AND TERMINATE WITHIN THE SPACE. PIPING SHALL NOT PASS OVER ELECTRICAL PANELS OR EQUIPMENT.
6. FIRE WATER PIPING TO BE 1" UNLESS OTHERWISE INDICATED.



1 FLOOR PLAN - LEVEL 1 - WEST - FIRE PROTECTION
 1/8" = 1'-0"