



Project
**THE CENTER FOR
 ADVANCED SURGICAL
 SERVICES (CASS)**
 88 JESSE HILL DRIVE
 ATLANTA, GA 30303

Prepared For
GRADY HEALTH SYSTEM
 80 JESSE HILL DR. SE
 ATLANTA, GA 30303

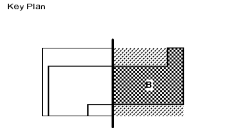


Hellmuth, Obata & Kassabaum, Inc.
 191 Peachtree Street, NE, Suite 2250
 Atlanta, GA 30303 USA
 T+1 404 439 9000 F+1 404 439 9001

All reproduction & intellectual property rights reserved © 2019

In Association with

TLC ENGINEERING
 200 S. Orange Avenue
 Suite 1600
 Orlando, FL 32801
 P: 407.841.0000
 F: 407.841.0000
 COA: PE0102880
 www.tlc-engineers.com
 TLC No.: 118649
 F200065, L167206, C2626119



Professional Seal
 Benjamin Roseborough, P.E.
 Georgia License #PE036005

**NOT FOR
 CONSTRUCTION**

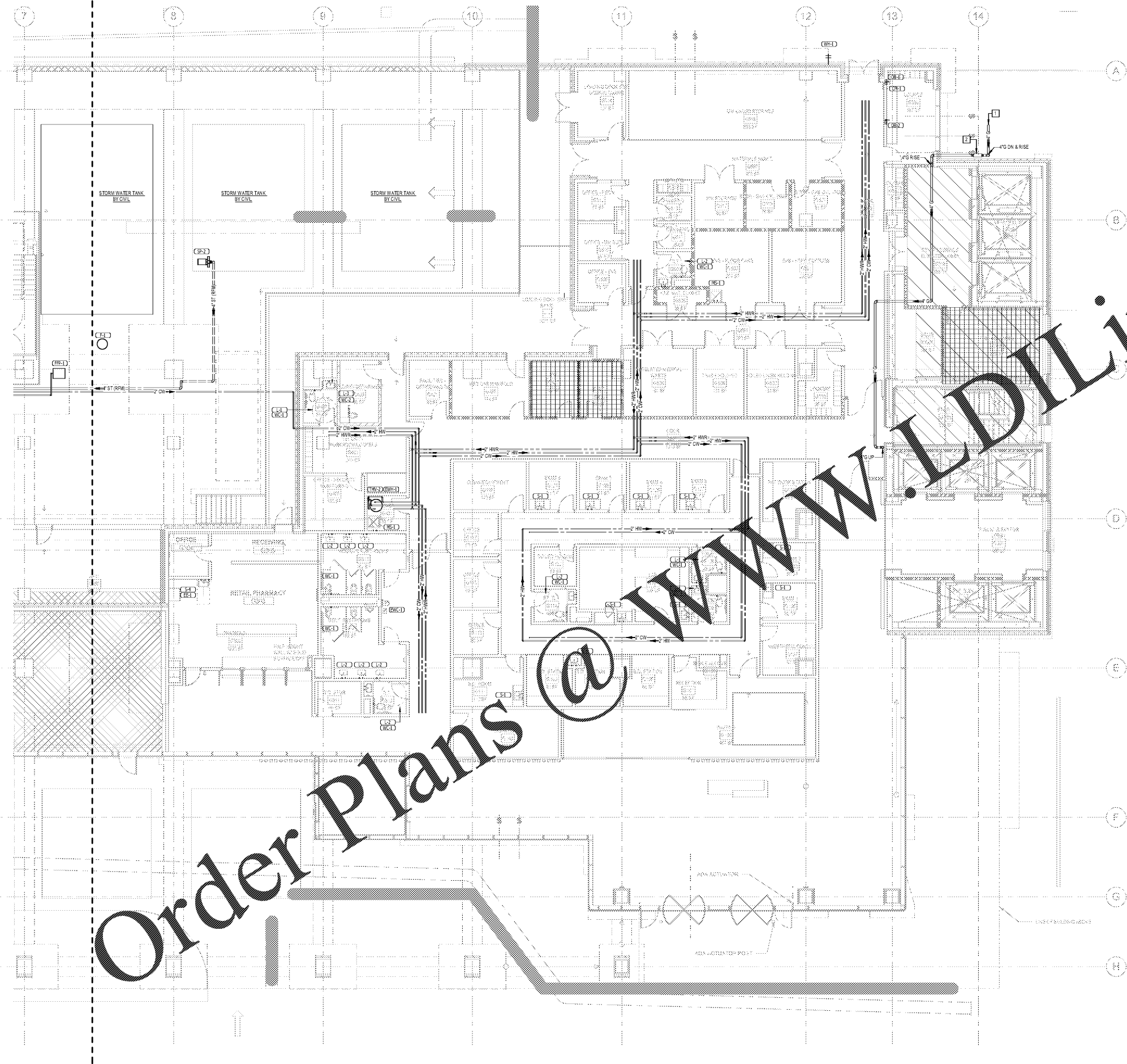
No.	Description	Date
1	ED - GUP	2019-07-03

Project No: 18.16013.00
 Sheet Title
**GROUND FLOOR PLAN
 - EAST - PRESSURE**

Original is 30 x 42. Do not scale contents of this drawing.
 Sheet Number
P200B

- PLUMBING NOTES PRESSURE (NEW)**
1. OFFSET ALL DOMESTIC WATER PIPING THROUGH THE CEILING SPACE OR WALL SPACES UNLESS NOTED OTHERWISE. PROVIDE SHUT OFF VALVE AND WATER HAMMER ARRESTORS AT EACH SUPPLY DROP TO PLUMBING FIXTURE OR GROUP OF FIXTURES.
 2. PIPING IS SHOWN OFFSET FOR DRAWING CLARITY. COORDINATE WITH HVAC AND ELECTRICAL CONTRACTORS AND PROVIDE ADDITIONAL OFFSETS AS REQUIRED TO AVOID CONFLICTS WITH OTHER TRASSES.
 3. PROVIDE A CHECK VALVE AND BALANCING VALVE INSTALLED AT AN ACCESSIBLE LOCATION NEAR THE JUNCTION OF THE HOT WATER RETURN MAIN. PROVIDE A MANUAL AIR VENT FOR EACH SECTION OF HOT WATER RETURN AT THE HIGHEST POINT OF THE PIPE. BALANCE THE HOT WATER RETURN SYSTEM WITH THE INDICATED FLOWS NOTED AT EACH BALANCING VALVE.
 4. PROVIDE WATER CONNECTION FOR ALL TRAP PRIMERS. ALL FLOOR DRAINS NOT RECEIVING A CONTINUOUS FLOW REQUIRE TRAP PRIMERS.
 5. COORDINATE ALL PLUMBING CONNECTIONS WITH EQUIPMENT SUPPLIER. COORDINATE EQUIPMENT ACCESSORIES AND SERVICE AREA WITH EQUIPMENT VENDOR.
 6. A CERTIFIED TEST AND BALANCING AGENCY SHALL PERFORM THE BALANCING AND ADJUSTMENTS TO THE HOT WATER SYSTEM.
 7. COORDINATE LOCATIONS OF ALL VALVES ABOVE THE CEILING SPACE. VALVES ARE READY ACCESSIBLE. PROVIDE ACCESS PANELS AS NEEDED. COORDINATE WITH OTHER TRADES.
 8. PROVIDE ALL HARDWARE, VALVES AND FITTINGS FOR COMPLETE INSTALLATION OF THE PLUMBING EQUIPMENT.
 9. SLEEVES OR HIRAF ALL UNDERGROUND PENETRATIONS.
 10. PROVIDE STOP VALVES UNDER THE COUNTER, AT THE WALLS FOR EACH PLUMBING EQUIPMENT CONNECTION.
 11. HATCHED AREAS INDICATE PIPING ON PLANS INDICATE EXISTING TO REMAIN.
 12. HATCHED AREAS CROSS-HATCHED ON PLANS INDICATE THAT NO PLUMBING SERVICES SHALL BE INSTALLED IN, ENTER OR EXIT THIS ROOM THAT DOES NOT SERVE THE ROOM DIRECTLY IN ACCORDANCE WITH NFPA 96 CODELINES.

- PLUMBING KEYNOTES**
- | | |
|---|--|
| 1 | NATURAL GAS LINE FROM UTILITY COMPANY. |
| 2 | GAS METER AND PRESSURE REGULATOR ASSEMBLY BY UTILITY COMPANY, 40,000 CFM @ 5 PSI GAS PRESSURE. |



1 FLOOR PLAN - GROUND LEVEL - EAST - PRESSURE
 1/8" = 1'-0"

C:\Revit\Local\GRADY\CASS-TLC-PLUMB_Adhima_rtdesign.rvt

7/1/2019 12:33:54 PM