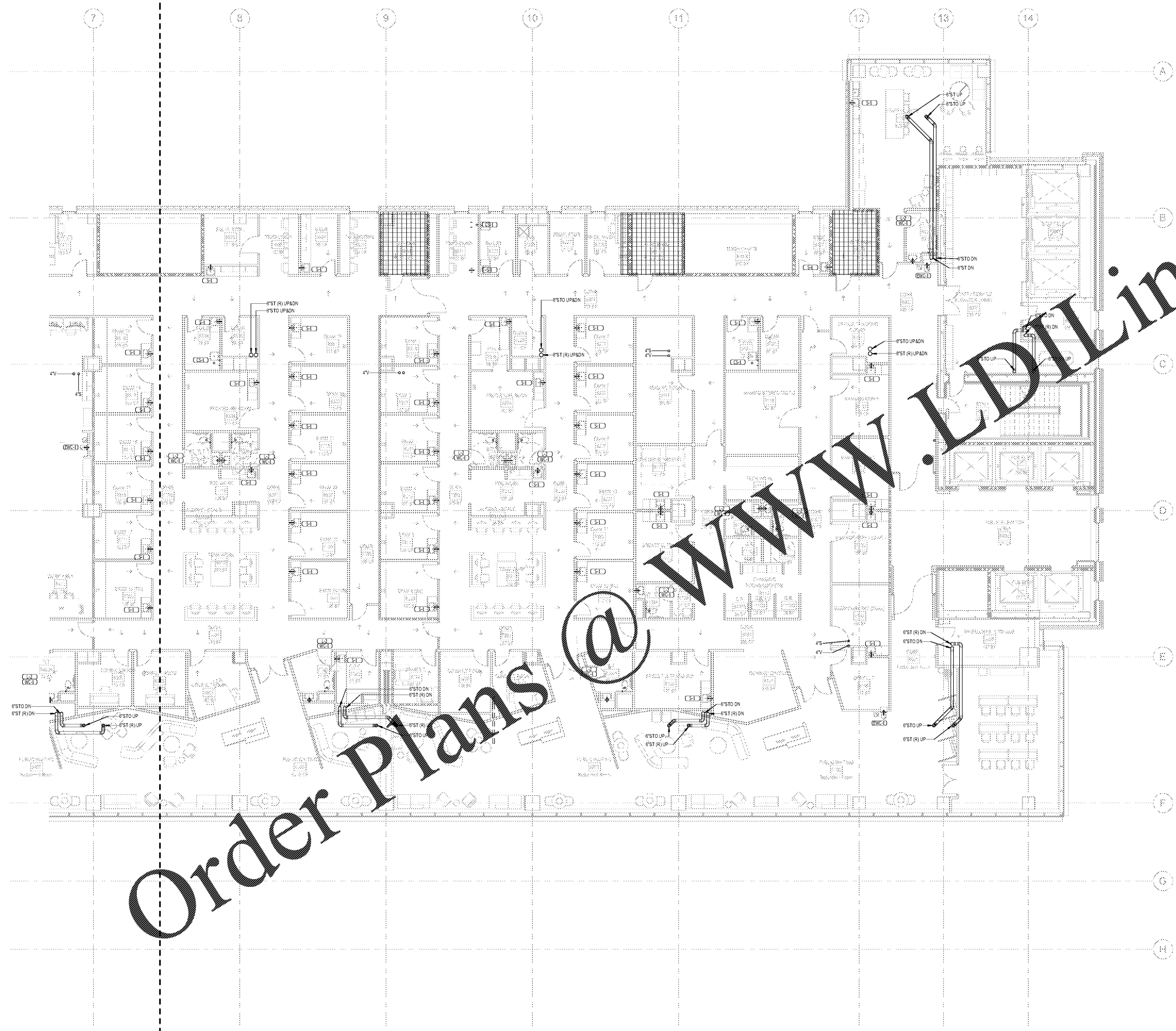


**NOT FOR
 CONSTRUCTION**

No.	Description	Date
1	ED - GMP	2019-07-03

- PLUMBING NOTES - GRAVITY (NEW)**
- ALL SANITARY PIPING INDICATED ON THIS DRAWING IS LOCATED BELOW SLAB OR IN WALL SPACE UNLESS OTHERWISE NOTED.
 - PIPING IS SHOWN OFFSET FOR CLARITY. COORDINATE WITH HVAC AND ELECTRICAL CONTRACTORS AND PROVIDE ADDITIONAL OFFSETS AS REQUIRED TO AVOID CONFLICTS WITH OTHER TRADES.
 - ALL SANITARY VENT (V), STORM (ST), AND STORM OVERFLOW (STO) AND CONDENSATE DRAIN PIPING INDICATED ON THIS DRAWING IS LOCATED ABOVE SLAB IN WALL CHASE, CEILING SPACE OR EXPOSED IN MECHANICAL ROOMS UNLESS NOTED OTHERWISE.
 - PROVIDE WALL CLEANOUTS AT THE BASE OF EACH SANITARY, STORM AND STORM OVERFLOW RISER. (CLEANOUTS NOT SHOWN IN ALL CASES FOR DRAWING CLARITY.)
 - COORDINATE ALL PLUMBING CONNECTIONS WITH EQUIPMENT SUPPLIERS. PROVIDE EQUIPMENT ACCESSORIES AND SERVICE AREA WITH EQUIPMENT VENDOR.
 - ALL INVERT ELEVATIONS SHOWN FROM TOP OF SLAB ON GRAVITY.
 - FOR LAYOUT AND SIZING OF SANITARY AND VENT PIPING SEE SANITARY RISER DIAGRAMS.
 - PROVIDE ALL HARDWARE, VALVES AND FITTINGS FOR A COMPLETE INSTALLATION OF PLUMBING EQUIPMENT.
 - COORDINATE ALL PIPING FLOOR PENETRATIONS WITH STRUCTURAL DRAWINGS. SLEEVE ALL BEAM PENETRATIONS.
 - COORDINATE FLOOR DRAIN AND FLOOR SINK LOCATIONS WITH EQUIPMENT PROVIDED.
 - HATCHED AREAS INDICATE WHICH WORK ON THIS DRAWING IS TO BE INSTALLED TO REMAIN.
 - HATCHED AREAS INDICATE WHICH WORK ON THIS DRAWING IS TO BE INSTALLED THROUGH THIS ROOM THAT DOES NOT SERVE THIS ROOM DIRECTLY. ACCORDANCE WITH NIPAA (NFPA) GUIDELINES.

PLUMBING KEYNOTES



Order Plans @ WWW.LDILine.com