



Project
**THE CENTER FOR
 ADVANCED SURGICAL
 SERVICES (CASS)**
 88 JESSE HILL DRIVE
 ATLANTA, GA 30303

Prepared For
GRADY HEALTH SYSTEM
 80 JESSE HILL DR. SE
 ATLANTA, GA 30303



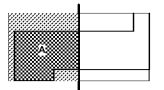
Hellmuth, Obata & Kassabaum, Inc.
 191 Peachtree Street, NE, Suite 2250
 Atlanta, GA 30303 USA
 T+1 404 439 9000 F+1 404 439 9001

All reproduction & intellectual property rights reserved © 2019

In Association with



Key Plan



Professional Seal
 Benjamin Roseborough, P.E.
 Georgia License #PE036005

**NOT FOR
 CONSTRUCTION**

No.	Description	Date
1	DD - GUP	2019-07-03

Project No: 18.16013.00
 Sheet Title

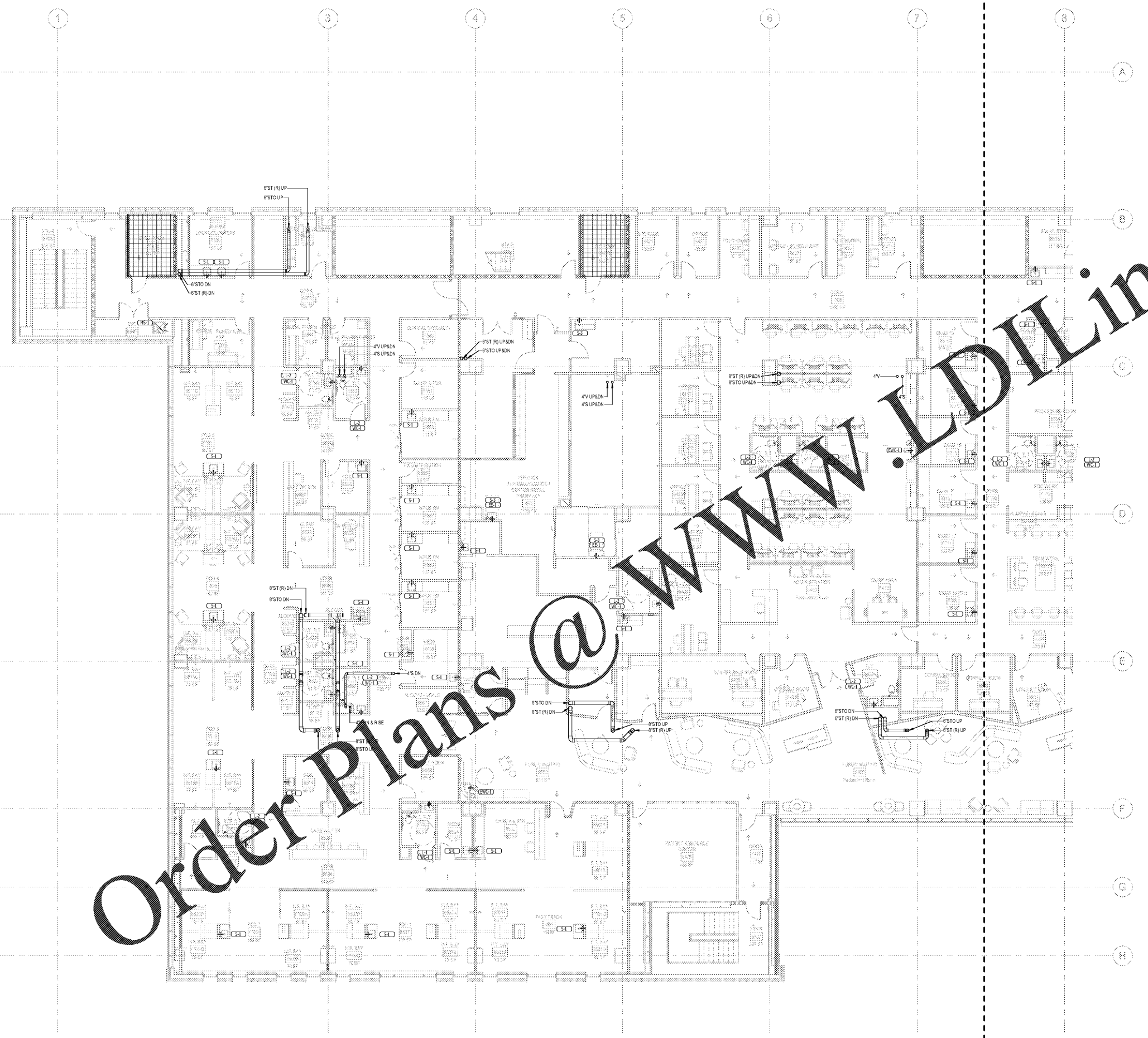
**LEVEL 8 FLOOR PLAN -
 WEST - GRAVITY**

Original is 30 x 42. Do not scale contents of this drawing.
 Sheet Number

P108A

- PLUMBING NOTES - GRAVITY (NEW)**
- 1 ALL SANITARY PIPING INDICATED ON THIS DRAWING IS LOCATED BELOW SLAB OR IN WALL SPACE UNLESS OTHERWISE NOTED.
 - 2 PIPING IS SHOWN OFFSET FOR CLARITY. COORDINATE WITH HVAC AND ELECTRICAL CONTRACTORS AND PROVIDE ADDITIONAL OFFSETS AS REQUIRED TO AVOID CONFLICTS WITH OTHER TRADES.
 - 3 ALL SANITARY VENT (V), STORM (ST), AND STORM OVERFLOW (STO) AND CONDENSATE DRAIN PIPING INDICATED ON THIS DRAWING IS LOCATED ABOVE SLAB IN WALL CHASE, CEILING SPACE OR EXPOSED IN MECHANICAL ROOMS UNLESS NOTED OTHERWISE.
 - 4 PROVIDE WALL CLEANOUTS AT THE BASE OF EACH SANITARY, STORM AND STORM OVERFLOW RISER. (CLEANOUTS NOT SHOWN IN ALL CASES FOR DRAWING CLARITY.)
 - 5 COORDINATE ALL PLUMBING CONNECTIONS WITH EQUIPMENT SUPPLIER. PROVIDE EQUIPMENT ACCESSORIES AND SERVICE AREA WITH EQUIPMENT VENDOR.
 - 6 ALL INVERT ELEVATIONS SHOWN FROM TOP OF SLAB ON GRAVITY SANITARY RISER DIAGRAMS.
 - 7 FOR LAYOUT AND SIZING OF SANITARY AND VENT PIPING SEE SANITARY RISER DIAGRAMS.
 - 8 PROVIDE ALL HARDWARE, VALVES AND FITTINGS FOR A COMPLETE INSTALLATION OF PLUMBING EQUIPMENT.
 - 9 COORDINATE ALL PIPING FLOOR PENETRATIONS WITH STRUCTURAL DRAWINGS. SLEEVE ALL BEAM PENETRATIONS.
 - 10 COORDINATE FLOOR DRAIN AND FLOOR SINK LOCATIONS WITH EQUIPMENT PROVIDED.
 - 11 HATCHED AREAS INDICATE PIPING ON PLANS. HATCHED AREAS TO REMAIN.
 - 12 HATCHED AREAS INDICATE PIPING ON PLANS. HATCHED AREAS TO REMAIN. SERVICES SHALL BE INSTALLED IN EXISTING THROUGH THIS ROOM THAT DOES NOT SERVE THE ROOM DIRECTLY IN ACCORDANCE WITH NFPA 96/IFGI GUIDELINES.

PLUMBING KEYNOTES



1 FLOOR PLAN - LEVEL 8 - WEST - GRAVITY
 1/8" = 1'-0"