

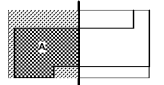


In Association with

250 S. Orange Avenue
 Suite 1800
 Orlando, FL 32801
 P: 407.841.0900

COA: PE1322660
 www.tlcengineers.com
 TLC No. 1118548
 TYPINGS: L15720N, C285A18

Key Plan



- PLUMBING NOTES - NEW WORK**
- ALL SANITARY PIPING INDICATED ON THIS DRAWING IS LOCATED BELOW SLAB OR IN WALL SPACE UNLESS OTHERWISE NOTED.
 - OFFSET ALL DOMESTIC WATER PIPING THROUGH THE CEILING SPACE OR WALL SPACES UNLESS NOTED OTHERWISE. PROVIDE SHUT OFF VALVE AND WATER HAMMER ARRESTORS AT EACH SUPPLY DROP TO PLUMBING FIXTURE OR GROUP OF FIXTURES.
 - PIPING IS SHOWN OFFSET FOR CLARITY. COORDINATE WITH HVAC AND ELECTRICAL CONTRACTORS AND PROVIDE ADDITIONAL OFFSETS AS REQUIRED TO AVOID CONFLICTS WITH OTHER TRADES.
 - ALL SANITARY VENT (S) STORM (ST) AND STORM OVERFLOW (STO) AND CONDENSATE DRAIN PIPING INDICATED ON THIS DRAWING IS LOCATED ABOVE SLAB IN WALL CHASE, CEILING SPACE OR MECHANICAL ROOMS UNLESS NOTED OTHERWISE.
 - PROVIDE WALL CLEANOUTS AT THE BASE OF ALL SANITARY STORM AND STORM OVERFLOW RISERS. PROVIDE WALL CLEANOUTS AT THE BASE OF ALL CONDENSATE DRAIN RISERS.
 - COORDINATE ALL PLUMBING CONDITIONS WITH PRESENT SUPPLIED COORDINATE DRAWINGS AND SEE ALL TRADES WITH EQUIPMENT VENDOR.
 - ALL INVERT ELEVATIONS SHALL BE FROM FINISH SLAB ON GRADE UNLESS OTHERWISE NOTED.
 - PROVIDE ALL SIZES OF SANITARY AND VENT PIPING SEE SANITARY SCHEDULE.
 - PROVIDE ALL SIZES OF VALVES AND FITTINGS FOR A COMPLETE INSTALLATION OF THE PLUMBING EQUIPMENT.
 - COORDINATE ALL PIPING FLOOR PENETRATIONS WITH STRUCTURAL DRAWING. SLEEVE ALL BEAM PENETRATIONS.
 - COORDINATE FLOOR DRAIN AND FLOOR SINK LOCATIONS WITH EQUIPMENT VENDOR.
 - PROVIDE A CHECK VALVE AND BALANCING VALVE INSTALLED AT AN ACCESSIBLE LOCATION NEAR THE JUNCTION OF THE HOT WATER RETURN MAIN. PROVIDE A MANUAL AIR VENT FOR EACH SECTION OF HOT WATER RETURN AT THE HIGHEST POINT OF THE PIPE. BALANCE THE HOT WATER RETURN SYSTEM WITH THE INDICATED FLOWS NOTED AT EACH BALANCING VALVE.
 - PROVIDE WATER CONNECTION FOR ALL TRAP PRIMERS. ALL FLOOR DRAINS NOT RECEIVING A CONTINUOUS FLOW REQUIRE TRAP PRIMERS.
 - A CERTIFIED TEST AND BALANCING AGENCY SHALL PERFORM THE BALANCING AND ADJUSTMENTS TO THE HOT WATER SYSTEM.
 - COORDINATE LOCATIONS OF ALL VALVES ABOVE THE CEILING TO ENSURE THAT ALL VALVES ARE READILY ACCESSIBLE. PROVIDE ACCESS PANELS AS NEEDED. COORDINATE WITH ALL OTHER TRADES.
 - PROVIDE ALL HARDWARE, VALVES AND FITTINGS FOR A COMPLETE INSTALLATION OF THE PLUMBING EQUIPMENT.
 - SLEEVE OR WRAP ALL UNDERGROUND COPPER PIPING.
 - PROVIDE STOP VALVES UNDER THE COUNTER OR IN THE WALL FOR EACH PLUMBING EQUIPMENT CONNECTION.
 - ALL MEDICAL GAS PIPING INDICATED ON THIS DRAWING IS LOCATED ABOVE SLAB IN WALL CHASE, CEILING SPACE OR EXPOSED IN MECHANICAL ROOMS UNLESS NOTED OTHERWISE.
 - HATCHED AREAS (DIAGONAL) APPEARING ON PLANS INDICATE EXISTING TO REMAIN.
 - HATCHED AREAS (CROSS-HATCH) APPEARING ON PLANS INDICATE THAT NO PLUMBING SERVICES SHALL BE INSTALLED IN, ENTER OR PASS THROUGH THIS ROOM THAT DOES NOT SERVE THE ROOM DIRECTLY IN ACCORDANCE WITH NFPA 99/FGI GUIDELINES.

PLUMBING KEYNOTES

Professional Seal
 Benjamin Roseborough, P.E.
 Georgia License #PE036005

**NOT FOR
 CONSTRUCTION**

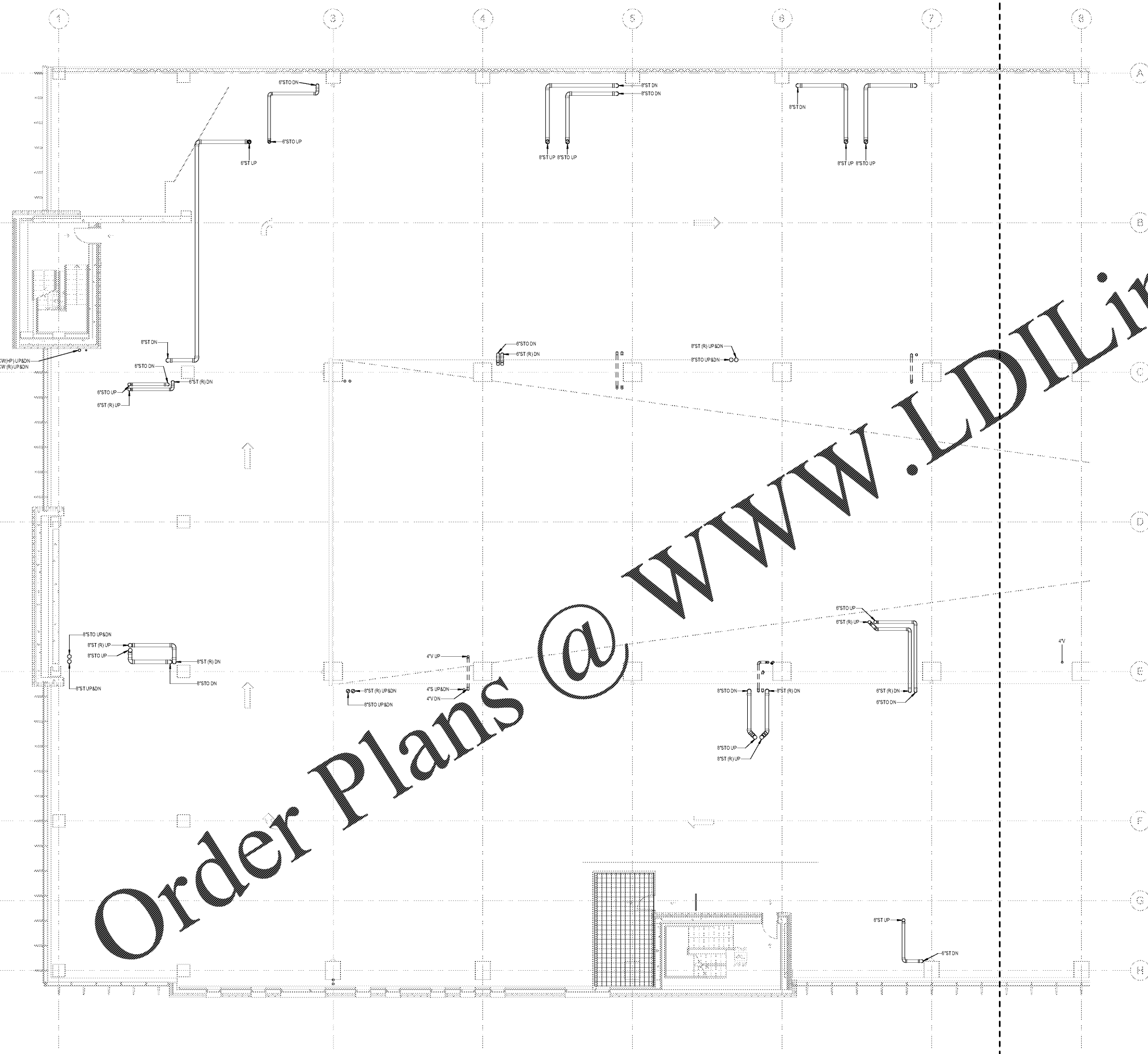
No.	Description	Date
1	ED - GUP	2019-07-03

Project No: 18.16013.00
 Sheet Title

**LEVEL 4 FLOOR PLAN -
 WEST - PLUMBING**

Original is 30 x 42. Do not scale contents of this drawing.
 Sheet Number

P104A



1 FLOOR PLAN - LEVEL 4 - WEST - PLUMBING
 1/8" = 1'-0"

Order Plans @ www.LDILine.com