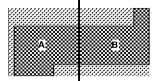




Key Plan



Professional Seals

NOT FOR CONSTRUCTION

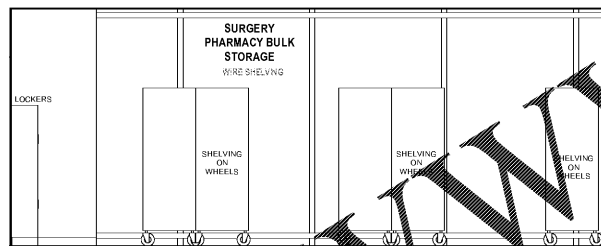
No.	Description	Date
1	DD - GMP	2019-07-03

GENERAL NOTES - INTERIOR ELEVATIONS

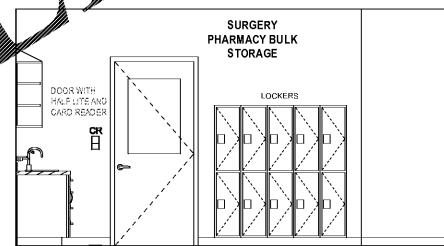
- A. COORDINATE ALL WORK, DEMO & NEW WITH PME DRAWINGS - SEE PME DRAWINGS FOR OTHER REQUIREMENTS NOT SHOWN ON INTERIOR ELEVATIONS. NOTIFY ARCHITECT OF DISCREPANCIES FOR CLARIFICATION.
- B. PATCH & REPAIR EXISTING WALLS TO REMAIN AS NECESSARY.
- C. SEE DOOR AND WINDOW SCHEDULES FOR GLAZING TYPES.
- D. SEE FINISH SCHEDULE FOR FINISH INFORMATION.
- E. SEE EQUIPMENT PLAN FOR ALL EQUIPMENT INFORMATION. COORDINATE WITH EQUIPMENT VENDOR TO ENSURE PROPER SPACE ALLOCATION AND ALL ITEMS NEEDED FOR INSTALLATION OF EQUIPMENT.
- F. PATCH & REPAIR EXISTING WALLS TO REMAIN AS NECESSARY.
- G. ALL BASE CABINETS ARE 24" DEEP U.N.O.
- H. ALL EXPOSED ENDS OF CASEWORK AND INSIDE FACES OF OPEN CASEWORK ARE TO BE FINISHED WITH THE SAME FINISH AS THE FACE OF CABINET. CASEWORK MANUFACTURER SHALL VERIFY & MEASURE ALL FIELD CONDITIONS PRIOR TO FABRICATION OF CASEWORK. COUINTERTOPS, ANY ALTERATIONS TO THE CASEWORK AS THE RESULT OF FIELD CONDITIONS SHALL BE APPROVED BY THE ARCHITECT AND OWNER PRIOR TO FABRICATION. CONTRACTOR MANUFACTURER SHALL COORDINATE WITH CONTRACTOR INSTALLATION OF BLOCKING AND SUPPORT BRACKETS.
- I. ALL DIMENSIONS SHOWN ARE TO FACE OF FINISH.
- J. ALL MOUNTING HEIGHTS ARE ABOVE FINISH FLOOR (A.F.F.).
- K. ALL FULL HEIGHT CABINETS ARE 24" DEEP U.N.O.
- L. ALL COUNTERTOPS ARE TO INCLUDE A CONTINUOUS MATCHING 4" BACKSPLASH U.N.O. ALL BACKSPLASHES ASSUMED TO INCLUDE SDESPLASHES AT ADJOINING WALLS AND/OR OTHER VERTICAL INTERSECTIONS.
- M. ALL OUTBOARD EXPOSED CORNERS OF COUNTERTOPS SHALL BE 1 1/2" RADIUS U.N.O.
- N. GENERAL CONTRACTOR IS RESPONSIBLE FOR PROVIDING IN-WALL BLOCKING ADEQUATE FOR THE SUPPORT OF ALL CABINETS HEREIN. IN ADDITION, THE CONTRACTOR SHALL PROVIDE ADEQUATE IN-WALL SUPPORT FOR ANY WALL MOUNTED CABINETS OR ANY COMPONENTS (INCLUDING BUT NOT LIMITED TO WALL MOUNTED SINKS, WALL MOUNTED DISPENSERS, GRAPHIC PANELS, SIGNAGE, ETC.) WHICH WILL BE CUSTOM ORDERED OR RIGIDLY ATTACHED TO WALL ASSEMBLIES OR STRUCTURAL COMPONENTS. SEE SPECIFICATIONS FOR BLOCKING REQUIREMENTS. NOTE: SPECIFICATIONS FOR BLOCKING ARE SHOWN IN THE DRAWINGS FOR CLARIFICATION. THIS NOTE IS TAKEN AS FULL ACCOUNTING.
- O. GENERAL TYPICAL BLOCKING MAY NOT BE SHOWN.
- P. PLUMBING AND DATA BLOCKING SHALL BE BELOW COUNTERTOPS, WITH DEPENDENT ACCESS CABINETS. LOCATIONS TO BE IDENTIFIED IN THE FIELD. ASSUME TWO PER CENT LENGTH OF WORKSPACE U.N.O.
- Q. ELEMENTS ARE TO BE 1/4" A.F.F. AND CENTERED IN SPACES U.N.O. SEE DRAWINGS.
- R. LIGHT SWITCHES ARE TO BE CENTERED IN SPACE AND 3'-4" A.F.F. U.N.O. - SEE DRAWINGS.
- S. PROVIDE BLIND CABINETS WHERE APPLICABLE.
- T. PROVIDE SCREENED FILLERS BETWEEN ALL WALLS AND CABINET ENDS U.N.O. PROVIDE MINIMUM 2" FILLERS BETWEEN THE CORNER CABINETS IN AN "L" SHAPE CONFIGURATION.
- U. PROVIDE CORNER CLOSURE PIECE UNDER THE WALL CABINETS IN AN "L" SHAPE CONFIGURATION.
- V. PROVIDE FINISH ENDS/EDGES FOR ALL EXPOSED END CABINETS.

CODED NOTES - INTERIOR ELEVATIONS

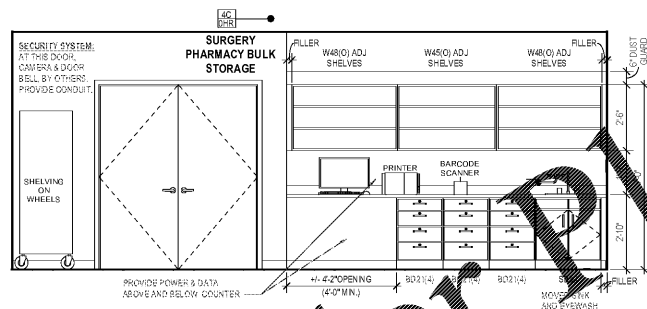
1. COUNTER MOUNTED SINK - SEE PLUMBING DRAWINGS.
2. WALL MOUNTED SINK - SEE PLUMBING DRAWINGS.
3. P-LAM ADA PLUMBING GUARD - SEE DETAIL.
4. INTEGRATED INSULATION PROTECTION BELOW SINK - SEE PME DRAWINGS.
5. PAPER TOWEL DISPENSER, O.F.C.I. - SEE MOUNTING HEIGHTS.
6. WALL MOUNTED SOAP DISPENSER, O.F.C.I. - SEE MOUNTING HEIGHTS.
7. HAND GEL DISPENSER, O.F.C.I. - SEE MOUNTING HEIGHTS.
8. DESK TOP PHONE - SEE PME DRAWINGS.
9. EXISTING RELOCATED EQUIPMENT TO REMAIN - SEE EQUIPMENT DRAWINGS.
10. NEW EQUIPMENT - SEE EQUIPMENT DRAWINGS.
11. PYXIS MAIN EQUIPMENT TERMINAL - SEE EQUIPMENT DRAWINGS.
12. PYXIS EQUIPMENT - SEE EQUIPMENT DRAWINGS.
13. CLINICAL REFRIGERATOR - SEE EQUIPMENT DRAWINGS.
14. CLINICAL FREEZER - SEE EQUIPMENT DRAWINGS.
15. 3P REFRIGERATOR - SEE EQUIPMENT DRAWINGS.
16. 12" X 12" STACKED PURSE LOCKERS - SEE EQUIPMENT DRAWINGS.
17. PNEUMATIC TUBE STATION - SEE EQUIPMENT DRAWINGS.
18. LIGHT FIXTURE LOCATION - SEE PME DRAWINGS.
19. LIGHT SWITCH LOCATION - SEE PME DRAWINGS.
20. PLUMBING FIXTURE - SEE PME DRAWINGS.
21. POWER OUTLET/DATA CONNECTION LOCATION - SEE PME DRAWINGS.
22. FIRE EXTINGUISHER CABINET
23. BASE AS SPECIFIED - SEE FINISH SCHEDULE
24. P-LAM CABINETS WITH LOCKS ON ALL DOORS AND DRAWERS - SEE FINISH SCHEDULE
25. P-LAM COUNTERTOP (PL-1) WITH BACKSPLASH - SEE FINISH SCHEDULE. PROVIDE GRIMMETS AS NEEDED AND VERIFY LOCATION(S) WITH OWNER PRIOR TO MANUFACTURING.
26. APRON TO MATCH COUNTERTOP FINISH MATERIAL
27. TRANSACTION COUNTERTOP - SEE FINISH SCHEDULE
28. P-LAM WALL CABINETS WITH BLOCKING - SEE CASEWORK DETAILS.
29. P-LAM FILLER PANELS - SEE FINISH SCHEDULE
30. P-LAM END PANEL SUPPORT - SEE FINISH SCHEDULE
31. LINE OF PLASTIC LAMINATED SLOPED TOP - SEE CASEWORK DETAILS.
32. LINE OF SOFFIT - SEE REFLECTED CEILING PLANS
33. DASHED LINE OF FINISH DRAWER - SEE FURNITURE SPECIFICATIONS
34. CONCEALED STEEL ANGLE MOUNTING BRACKET - SEE SECTION DETAIL
35. SURFACE MOUNTED STEEL COUNTERTOP SUPPORT BRACKET - SEE SECTION DETAIL
36. SHELF AND ROD (PL-1) - SEE DETAIL
37. ADA SHELF AND ROD (PL-1) - SEE DETAIL
38. RIGID SHEET WALL PROTECTION (WP-1) - SEE FINISH SCHEDULE
39. CORNER GUARD - SEE FINISH SCHEDULE



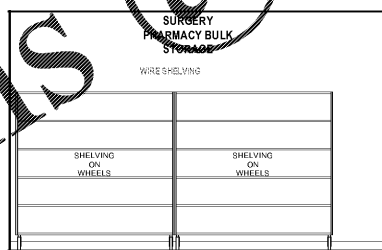
8 PHARMACY BULK STORAGE - WEST
3/8" = 1'-0"



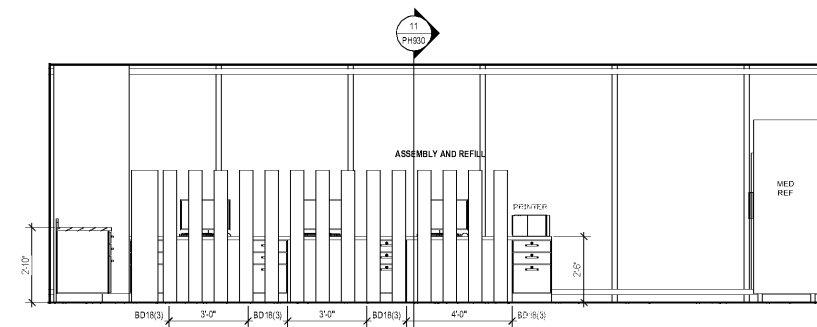
7 PHARMACY BULK STORAGE - SOUTH
3/8" = 1'-0"



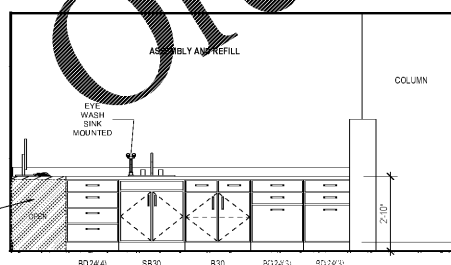
6 PHARMACY BULK STORAGE - EAST
3/8" = 1'-0"



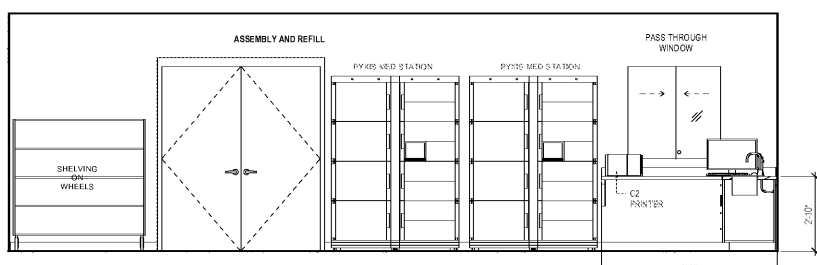
5 PHARMACY BULK STORAGE - NORTH
3/8" = 1'-0"



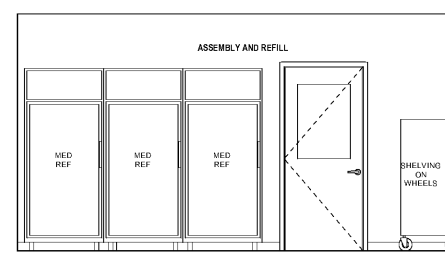
4 ASSEMBLY AND REFILL - WEST
3/8" = 1'-0"



3 ASSEMBLY AND REFILL - SOUTH
3/8" = 1'-0"



2 ASSEMBLY AND REFILL - EAST
3/8" = 1'-0"



1 ASSEMBLY AND REFILL - NORTH
3/8" = 1'-0"