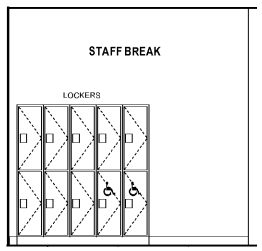


GENERAL NOTES - INTERIOR ELEVATIONS

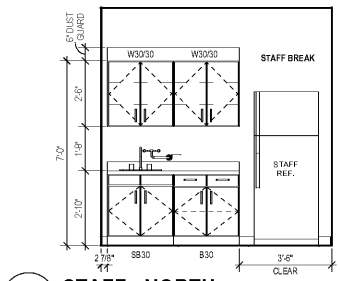
- A. COORDINATE ALL WORK, DEMO & NEW WITH PME DRAWINGS - SEE PME DRAWINGS FOR OTHER REQUIREMENTS NOT SHOWN ON INTERIOR ELEVATIONS. NOTIFY ARCHITECT OF DISCREPANCIES FOR CLARIFICATION.
- B. PATCH & REPAIR EXISTING WALLS TO REMAIN AS NECESSARY.
- C. SEE DOOR AND WINDOW SCHEDULES FOR GLAZING TYPES.
- D. SEE FINISH SCHEDULE FOR FINISH INFORMATION.
- E. SEE EQUIPMENT PLAN FOR ALL EQUIPMENT INFORMATION. COORDINATE WITH EQUIPMENT VENDOR TO ENSURE PROPER SPACE ALLOCATION AND ALL ITEMS NEEDED FOR INSTALLATION OF EQUIPMENT.
- F. PATCH & REPAIR EXISTING WALLS TO REMAIN AS NECESSARY.
- G. ALL BASE CABINETS ARE 24" DEEP U.N.O.
- H. ALL EXPOSED ENDS OF CASEWORK AND INSIDE FACES OF OPEN CASEWORK ARE TO BE FINISHED WITH THE SAME FINISH AS THE FACE OF CABINET. CASEWORK MANUFACTURER SHALL VERIFY / MEASURE ALL FIELD CONDITIONS PRIOR TO FABRICATION OF CASEWORK. COUINTERTOPS, ANY ALTERATIONS TO THE CASEWORK AS THE RESULT OF FIELD CONDITIONS SHALL BE APPROVED BY THE ARCHITECT AND OWNER PRIOR TO FABRICATION. CONTRACTOR MANUFACTURER SHALL COORDINATE WITH CONTRACTOR INSTALLATION OF BLOCKING AND SUPPORT BRACKETS.
- I. ALL DIMENSIONS SHOWN ARE ABOVE FINISH FLOOR (A.F.F.).
- J. ALL MOUNTING HEIGHTS ARE ABOVE FINISH FLOOR (A.F.F.).
- K. ALL FULL HEIGHT CABINETS ARE 24" DEEP U.N.O.
- L. ALL COUNTERTOPS ARE TO INCLUDE A CONTINUOUS MATCHING 4" BACKSPLASH U.N.O. ALL BACKSPLASHES ASSUMED TO INCLUDE INTERSECTIONS AT ADJOINING WALLS AND/OR OTHER VERTICAL INTERSECTIONS.
- M. ALL OUTBOARD EXPOSED CORNERS OF COUNTERTOPS ARE TO BE 1 1/2" RADIUS U.N.O.
- N. GENERAL CONTRACTOR IS RESPONSIBLE FOR PROVIDING IN-WALL BLOCKING ADEQUATE FOR THE SUPPORT OF ALL COUNTERTOPS HEREIN. IN ADDITION, THE CONTRACTOR SHALL VERIFY ADEQUATE IN-WALL BLOCKING FOR ANY FULL HEIGHT CABINETS OR WALL MOUNTED EQUIPMENT, BUT NOT LIMITED TO WALL MOUNTED EQUIPMENT, INCLUDING GRAPHIC PANELS, SIGNAGE, ETC. ALL WALL MOUNTED ITEMS ARE TO BE RIGIDLY ATTACHED TO WALL ASSEMBLIES OR STRUCTURAL COMPONENTS. SEE SPECIFICATIONS FOR BLOCKING REQUIREMENTS. NOTE: SPECIFICATIONS ARE TO BE TAKEN AS FULL ACCOUNTING. GENERAL CONTRACTOR SHALL VERIFY ANY NOT BE SHOWN.
- O. PROVIDE AND DATA BLOCKING UNDER ALL COUNTERTOPS, WITH DEPENDENT COUNTERMETS. LOCATIONS TO BE IDENTIFIED IN THE FIELD. ASSURE TWO PER CENT LENGTH OF WORKSPACE U.N.O.
- P. ALL WALL MOUNTED ITEMS ARE TO BE A.F.F. AND CENTERED IN SPACES U.N.O. SEE DRAWINGS.
- Q. LIGHT SWITCHES ARE TO BE CENTERED IN SPACE AND 3'-4" A.F.F. U.N.O. - SEE DRAWINGS.
- R. PROVIDE BLIND CABINETS WHERE APPLICABLE.
- S. PROVIDE SCREENED FILLERS BETWEEN ALL WALLS AND CABINET ENDS, U.N.O. PROVIDE MINIMUM 2" FILLERS BETWEEN THE CORNER CABINETS IN AN "L" SHAPE CONFIGURATION.
- T. PROVIDE CORNER CLOSURE PIECE UNDER THE WALL CABINETS IN AN "L" SHAPE CONFIGURATION.
- V. PROVIDE FINISH ENDS/SIDES FOR ALL EXPOSED END CABINETS.

CODED NOTES - INTERIOR ELEVATIONS

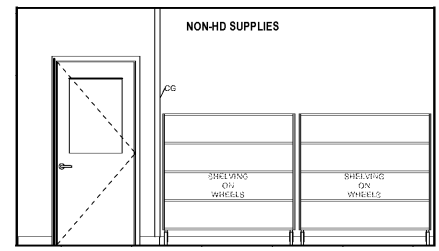
- 1. COUNTER MOUNTED SINK - SEE PLUMBING DRAWINGS.
- 2. WALL MOUNTED SINK - SEE PLUMBING DRAWINGS.
- 3. PLUMBING ADA PLUMBING GUARD - SEE DETAIL.
- 4. INTEGRATED INSULATION PROTECTION BELOW SINK - SEE PME DRAWINGS.
- 5. PAPER TOWEL DISPENSER, D.F.C.I. - SEE MOUNTING HEIGHTS.
- 6. WALL MOUNTED SOAP DISPENSER, D.F.C.I. - SEE MOUNTING HEIGHTS.
- 7. HAND GEL DISPENSER, D.F.C.I. - SEE MOUNTING HEIGHTS.
- 8. DESK TOP PHONE - SEE PME DRAWINGS.
- 9. EXISTING RELOCATED EQUIPMENT TO REMAIN - SEE EQUIPMENT DRAWINGS.
- 10. NEW EQUIPMENT - SEE EQUIPMENT DRAWINGS.
- 11. PYXIS MAIN EQUIPMENT TERMINAL - SEE EQUIPMENT DRAWINGS.
- 12. PYXIS EQUIPMENT - SEE EQUIPMENT DRAWINGS.
- 13. CLINICAL REFRIGERATOR - SEE EQUIPMENT DRAWINGS.
- 14. CLINICAL FREEZER - SEE EQUIPMENT DRAWINGS.
- 15. 30" REFRIGERATOR - SEE EQUIPMENT DRAWINGS.
- 16. 12" X 12" STACKED PURSE LOCKERS - SEE EQUIPMENT DRAWINGS.
- 17. PNEUMATIC TUBE STATION - SEE EQUIPMENT DRAWINGS.
- 18. LIGHT FIXTURE LOCATION - SEE PME DRAWINGS.
- 19. LIGHT SWITCH LOCATION - SEE PME DRAWINGS.
- 20. PLUMBING FIXTURE - SEE PME DRAWINGS.
- 21. POWER OUTLET/DATA CONNECTION LOCATION - SEE PME DRAWINGS.
- 22. FIRE EXTINGUISHER CABINET.
- 23. BASE AS SPECIFIED - SEE FINISH SCHEDULE.
- 24. P.L.M. CABINETRY WITH LOCKS ON ALL DOORS AND DRAWERS - SEE FINISH SCHEDULE.
- 25. P.L.M. COUNTERTOP (P.L.-1) WITH BACKSIDE SPLASH - SEE FINISH SCHEDULE. PROVIDE GRIMMETS AS NEEDED AND VERIFY LOCATION(S) WITH OWNER PRIOR TO MANUFACTURING.
- 26. APRON TO MATCH COUNTERTOP FINISH/MATERIAL.
- 27. TRANSACTION COUNTERTOP - SEE FINISH SCHEDULE.
- 28. P.L.M. WALL CABINETRY WITH BLOCKING - SEE CASEWORK DETAILS.
- 29. P.L.M. FILLER PANELS - SEE FINISH SCHEDULE.
- 30. P.L.M. END PANEL SUPPORT - SEE FINISH SCHEDULE.
- 31. LINE OF PLASTIC LAMINATED SLOPED TOP - SEE CASEWORK DETAILS.
- 32. LINE OF SUPPORT - SEE REFLECTED CEILING PLANS.
- 33. DASHED LINE OF PANEL DRAWERS - SEE FURNITURE SPECIFICATIONS.
- 34. CONCEALED STEEL ANGLE MOUNTING BRACKET - SEE SECTION DETAIL.
- 35. SURFACE MOUNTED STEEL COUNTERTOP SUPPORT BRACKET - SEE SECTION DETAIL.
- 36. SHELF AND ROD (P.L.-1) - SEE DETAIL.
- 37. ADA SHELF AND ROD (P.L.-1) - SEE DETAIL.
- 38. RIGID SHEET WALL PROTECTION (WP-1) - SEE FINISH SCHEDULE.
- 39. CORNER GUARD - SEE FINISH SCHEDULE.



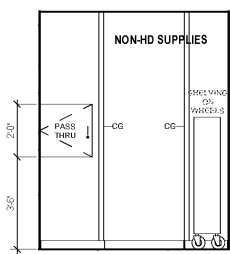
15 STAFF - SOUTH
3/8" = 1'-0"



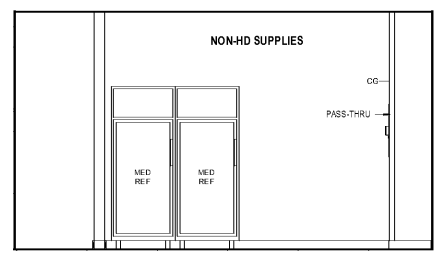
14 STAFF - NORTH
3/8" = 1'-0"



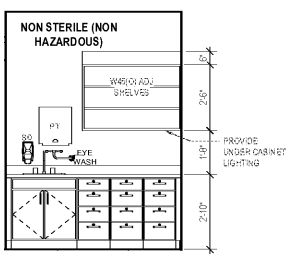
13 NON-HD SUPPLIES - SOUTH
3/8" = 1'-0"



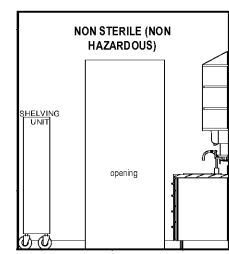
12 NON-HD SUPPLIES - EAST
3/8" = 1'-0"



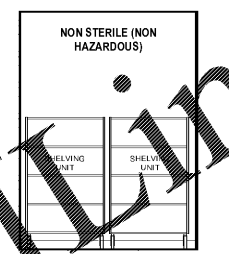
11 NON-HD SUPPLIES - NORTH
3/8" = 1'-0"



10 NON STERILE - WEST
3/8" = 1'-0"



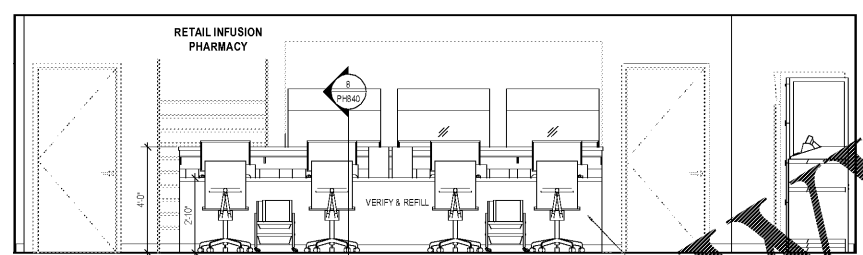
9 NON STERILE - SOUTH
3/8" = 1'-0"



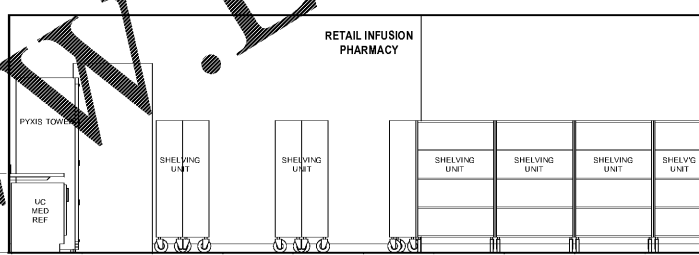
8 NON STERILE - EAST
3/8" = 1'-0"



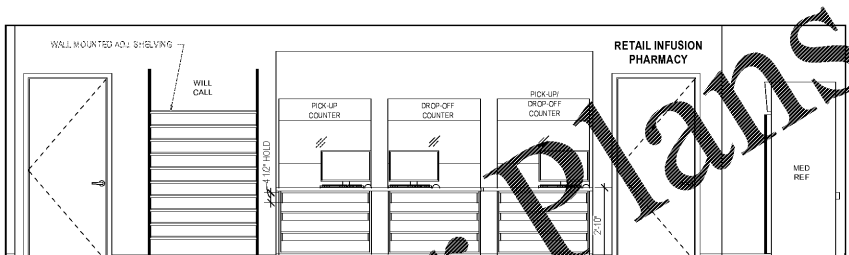
7 NON STERILE - NORTH
3/8" = 1'-0"



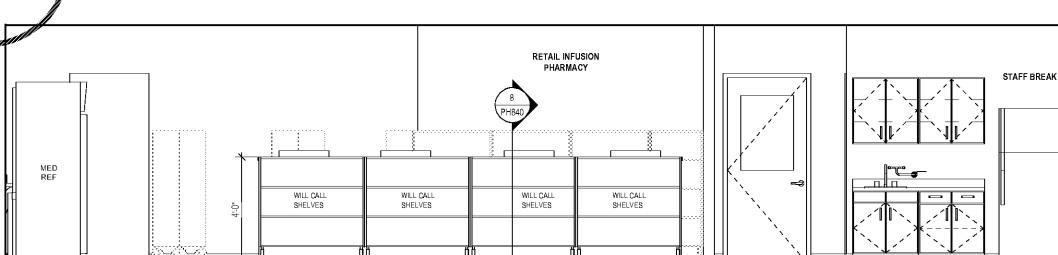
6 RETAIL INFUSION PHARMACY - SOUTH 2
3/8" = 1'-0"



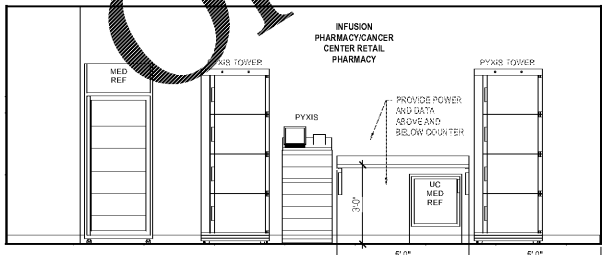
5 RETAIL INFUSION PHARMACY - NORTH
3/8" = 1'-0"



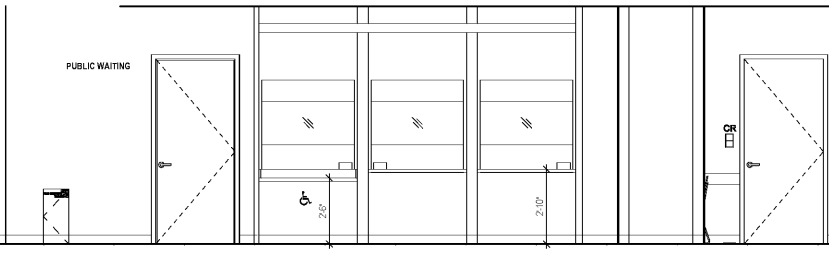
4 RETAIL INFUSION PHARMACY - SOUTH
3/8" = 1'-0"



3 RETAIL INFUSION PHARMACY - NORTH.
3/8" = 1'-0"



2 RETAIL INFUSION PHARMACY - WEST
3/8" = 1'-0"



1 RETAIL INFUSION PHARMACY - N
3/8" = 1'-0"



Project
CASS Pharmacies

88 Jesse Hill Drive
Atlanta, GA 30303

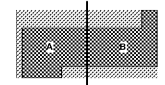
Prepared For
GRADY HEALTH SYSTEM



Helmut Obata & Kaszabum, Inc.
133 Peachtree Street, NE, Suite 4800
Atlanta, GA 30303 USA
t+1 404 439 9000 f+1 404 439 9001

All reproduction & intellectual property rights reserved © 2019
In Association with

Key Plan



Professional Seals

NOT FOR CONSTRUCTION

No.	Description	Date
1	DD - GMP	2019-07-03

Project No: 18534.01
Sheet Title
INTERIOR ELEVATIONS AND DETAILS - INFUSION PHARMACY

Original is 30 x 42. Do not scale contents of this drawing.
Sheet Number

PH910

Order Plans @

WWW.IDDLINE