

GENERAL NOTES - CASEWORK

- REFER TO SPECIFICATION MANUAL SECTIONS 06.20.00 (FINISHED CARPENTRY) AND 06.40.00 (ARCHITECTURAL WOODWORK) FOR A COMPLETE ENUMERATION OF PERFORMANCE AND FABRICATION GUIDELINES.
- GENERAL CONTRACTOR IS RESPONSIBLE FOR PROVIDING IN-WALL BLOCKING ADEQUATE FOR THE SUPPORT OF ALL CABINETRY NOTED HEREIN. IN ADDITION, THE CONTRACTOR SHALL PROVIDE ADEQUATE IN-WALL BLOCKING FOR ANY/ALL FINISH CARPENTRY OR ORNAMENTAL COMPONENTS (INCLUDING BUT NOT LIMITED TO WALL PANELS, MILLWORK, CUSTOM CASEWORK, GRAPHIC PANELS, BANNERS, ETC.) DESIGNATED AND DETAILLED HEREIN AS RIGIDLY ATTACHED TO WALL ASSEMBLIES OR OTHER STRUCTURAL COMPONENTS. SEE SPECIFICATION SECTION 06.10.30 FOR BLOCKING REQUIREMENTS. NOTE: SPECIFIC TYPES OF BLOCKING ARE SHOWN IN DETAIL DRAWINGS FOR CLARITY - THIS IS NOT TO BE TAKEN AS A FULL ACCOUNTING. GENERAL TYPICAL BLOCKING MAY OR MAY NOT BE SHOWN.
- FOR PLASTIC LAMINATE CABINETS, ALL EXPOSED EXTERIOR SURFACES ARE TO BE CLAD IN PLASTIC LAMINATE (COLOR AS NOTED). ALL EXPOSED INTERIOR SURFACES ARE TO BE CLAD IN WHITE MELAMINE. HOODS OR CONCEALED FACES ARE TO BE CLAD IN A PLASTIC LAMINATE BACKER, DOORS AND ADJUSTABLE SHELVES ARE TO BE FULLY CLAD IN THE SAME PLASTIC LAMINATE AS THE CASE (UNLESS NOTED OTHERWISE).
- PROVIDE LOCKS FOR CABINET DOORS (UPPER AND LOWER) AS NOTED ON SPECIFIC ELEVATIONS.
- ALL COUNTERTOPS ARE TO INCLUDE A CONTINUOUS 1/2" THICK BACKSPLASH (UNLESS SHOWN AND NOTED OTHERWISE). ALL BACKSPLASHES ASSIGNED TO INCLUDE SIDESPLASHES AHEAD OF ALL BACKSPLASHES AND OTHER VERTICAL INTERSECTIONS.
- PLASTIC LAMINATE COUNTERTOPS ARE TO BE 1 1/2" THICK WITH A MATCHING DOELKN WOOD GRAIN. EDGES TO BE ROUNDED (MANUFACTURER'S BEST MATCH). EDGE BAND MATCHES TO DOELKN. SUBMIT FOR APPROVAL PRIOR TO FABRICATION. UNDERLAYS OF COLORED MDF OR PLYWOOD WITH BACKER SHEET.
- ALL MICROWAVE CABINETS MANAGEMENT SLOTS ARE TO BE 12" LONG X 1" WIDE WITH DOUG HOOKS AND 1/2" SPACING. (MANUFACTURER'S BEST MATCH). EDGE BAND MATCHES TO DOELKN. SUBMIT FOR APPROVAL PRIOR TO FABRICATION. UNDERLAYS OF COLORED MDF OR PLYWOOD WITH BACKER SHEET.
- FOR "WIRE PULL" COUNTERTOP/BACKSPLASH SUBSTRATE TO BE MARINE GRADE MDF.
- ALL SHELVES ARE ADJUSTABLE (UNLESS NOTED OTHERWISE) SUPPORTED ON NICKEL (SPOON-TYPE) SHELF PINS. RECEIVING HOLES TO BE SPACED 2" O.C. FOR REFERENCE ONLY. EXACT LOCATIONS TO BE VERIFIED IN FIELD WITH OWNER.
- FOR CABINETS AT INSIDE CORNERS, PROVIDE "CORNER CABINET" EXTENSION SO THAT END CABINET OF ONE RUN EXTENDS ALONG AND BEHIND OTHER RUN TO FILL IN CORNER DEAD SPACE - WOODY ALIGNMENT SHELF SUPPORTS AS REQUIRED.
- FINISH MATERIAL ABBREVIATIONS ARE DELINEATED IN THE OVERALL PROJECT FINISH LEGEND.



Project
CASS Pharmacies

88 Jesse Hill Drive
Atlanta, GA 30303

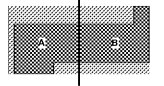
Prepared For
GRADY HEALTH SYSTEM



Helmut Obata & Kaszabum, Inc.
133 Peachtree Street, NE, Suite 4800
Atlanta, GA 30303 USA
+1 404 439 9000 +1 404 439 9001

All reproduction & intellectual property rights reserved © 2019
In Association with

Key Plan



Professional Seals

NOT FOR CONSTRUCTION

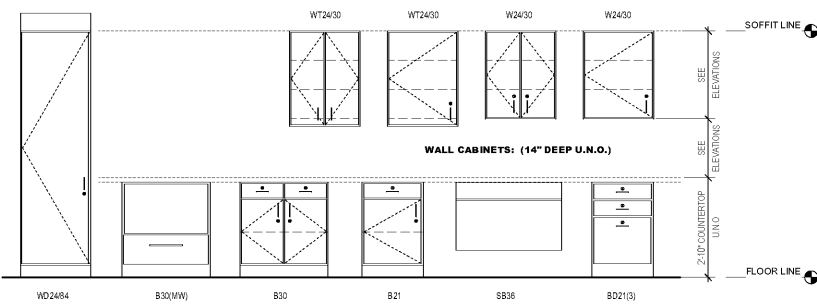
No.	Description	Date
1	DD - GMP	2019-07-03

Project No: 18534.01
Sheet Title

CASEWORK DETAILS - PHARMACY

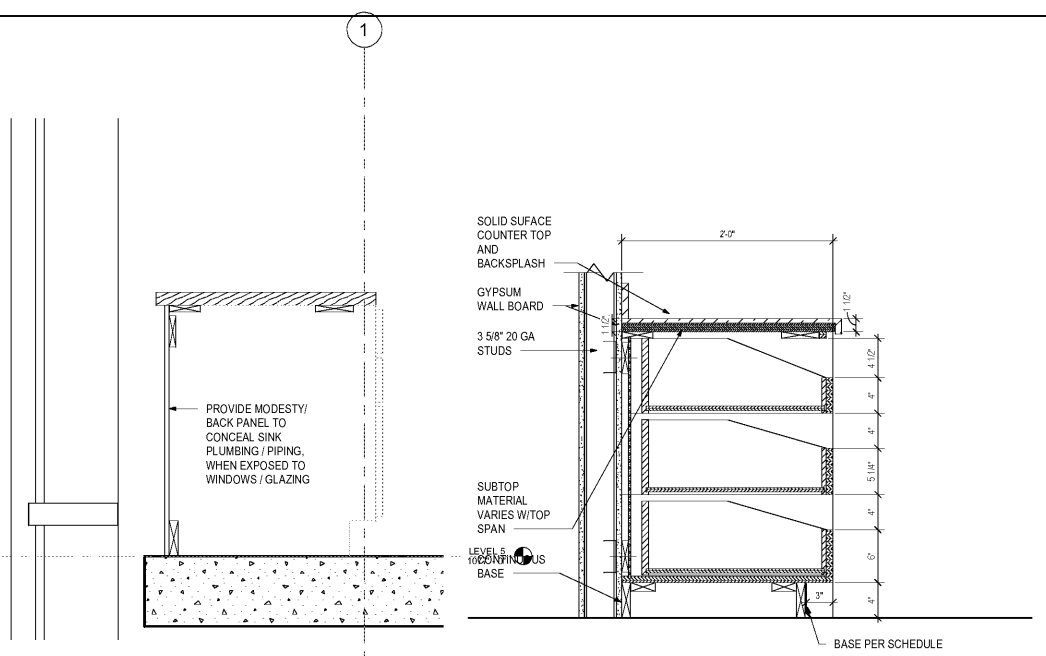
Original is 20 x 40. Do not scale contents of this drawing.
Sheet Number

PH930



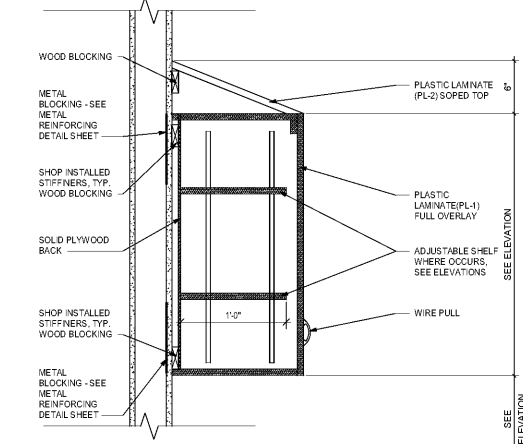
- TALL CABINETS: (24" DEEP U.N.O.)**
- BASE CABINETS: (24" DEEP U.N.O.)**
- TYPE DESIGNATION
- W - WALL CABINET WITH SOLID DOOR AND ADJUSTABLE SHELVING
 - B - BASE CABINET WITH DOORS (AND DRAWERS)
 - SB - SINK BASE CABINET WITH DOORS
 - BD - BASE CABINET WITH DRAWERS (BY DESIGNATES QUANTITY OF DRAWERS)
 - T - TALL CABINET WITH ADJUSTABLE SHELVING (SEE ELEVATIONS FOR DOOR CONFIGURATION)
 - R - BASE CABINET WITH FULL HEIGHT DOOR FOR THE "OUT" SIDE
 - H - BASE CABINET WITH DOOR AND OPEN FRONT WALL (WITH TOE KICK)
- SPECIALTY TYPE DESIGNATION
- WW - MICROWAVE WALL CABINET
 - WB - MICROWAVE BASE CABINET
 - WD - MICROWAVE TALL CABINET
 - OW - OPEN FRONT WITH ADJUSTABLE SHELVING
 - OS - OPEN FRONT WITH SOLID SHELVING
- WOOD (W/W)
- 30" WIDE
30" HIGH
SPECIALTY TYPE

9 TYPICAL CASEWORK LEGEND
1/2" = 1'-0"

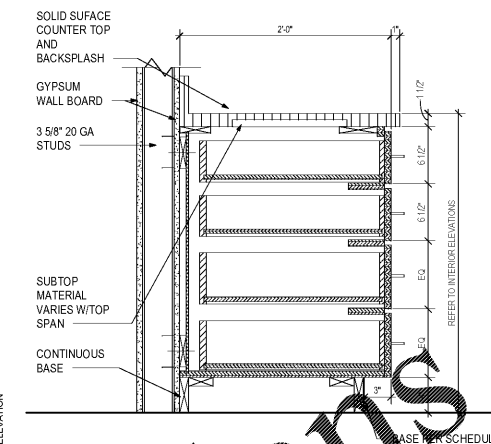


11 DETAIL MODESTY/BACK PANEL AT GLAZING
1 1/2" = 1'-0"
REF: 1/PH405

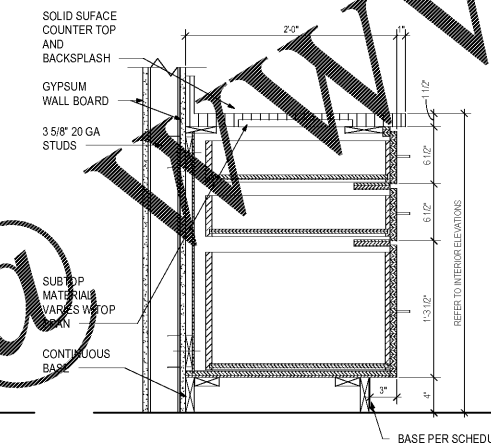
10 DETAIL BASE CABINET (3) DRAWER
1 1/2" = 1'-0"



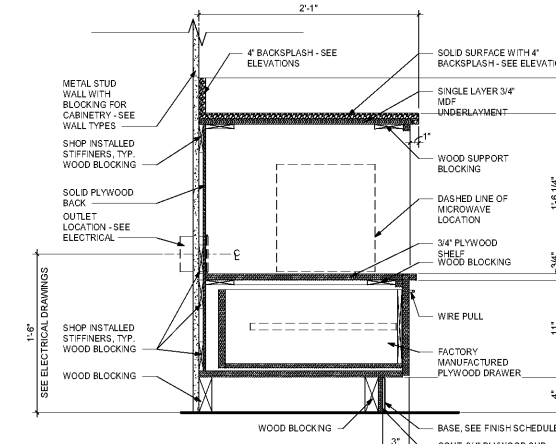
8 DETAIL TYPICAL WALL CASEWORK
1 1/2" = 1'-0"



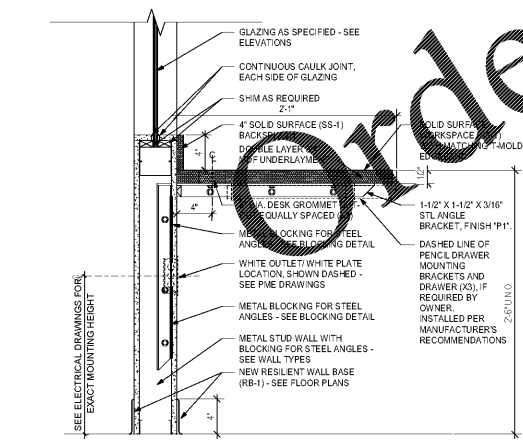
7 DETAIL BASE CABINET TYPE BD(4)
1 1/2" = 1'-0"



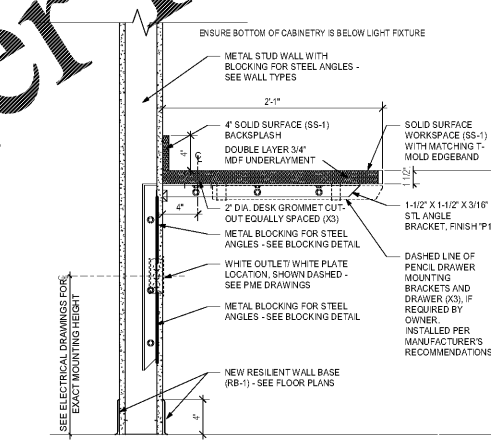
6 DETAIL BASE CABINET TYPE BD(3)
1 1/2" = 1'-0"



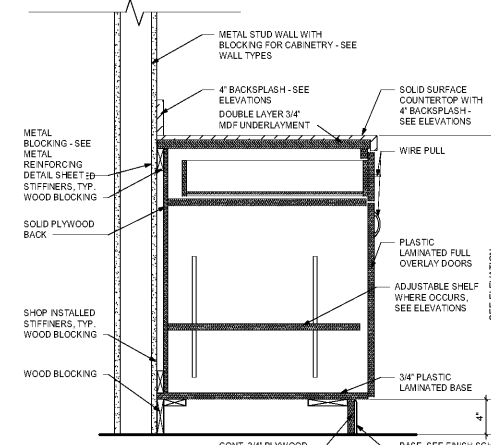
5 DETAIL MICROWAVE BASE
1 1/2" = 1'-0"



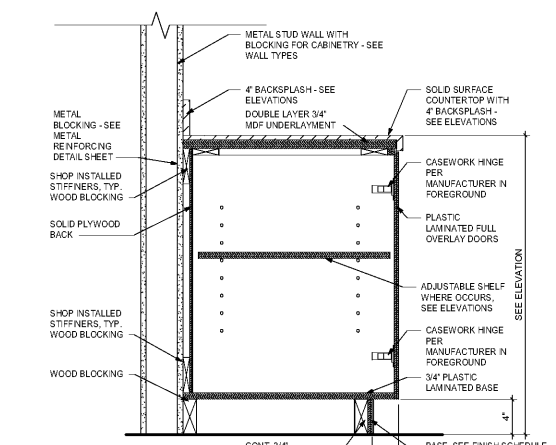
4 DETAIL WORKSTATION @ WINDOW
1 1/2" = 1'-0"



3 DETAIL WORKSTATION
1 1/2" = 1'-0"



2 DETAIL TYPICAL CASEWORK WITH DRAWER
1 1/2" = 1'-0"



1 DETAIL TYPICAL CASEWORK
1 1/2" = 1'-0"